



PARTS CATALOGUE

FZN 150



2GS1



**FZN 150 (2GS1) PARTS CATALOGUE
INDIA YAMAHA MOTOR PVT. LTD.**

1st edition, June 2014 All rights reserved.

Any reprinting or unauthorized use without the written permission of
INDIA YAMAHA MOTOR PVT. LTD. is expressly prohibited.

Printed in INDIA

FOREWORD

This Parts Catalogue is related to the parts in use for the YAMAHA - 2GS1 When you are ordering replacement parts for 2GS1 refer to this Parts Catalogue and quote both part numbers and part names correctly.

1. Modifications or additions which have been made after issue of the Parts Catalogue will be announced in the Service Actions. It is advisable that according to the Part Information you make necessary corrections to the Parts Catalogue on hand to keep it up-to-date.
2. Indication of No. of constituent parts for assembly.
The numeral appearing to the right of each constituent part under the description indicates the quantity of such parts for each individual assembly unit.

3. Abbreviations

The following abbreviations are used in this Parts Catalogue.

“UR” Use specified parts number.

“UN” Use as many as needed.

“AP” Alternate Parts

“LM” Locally Made (Parts need to be ordered locally)

“F#” Frame No. (Applicable machine No.)

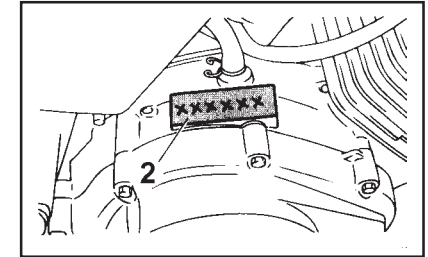
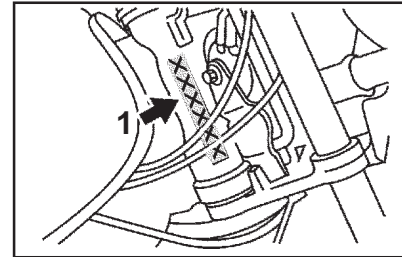
“O/S” Over Size

EXAMPLE

Part No.	Description	Qty
2GS-E1400-09	CRANK SHAFT ASSY.	1
1CK-H2100-00	BATTERY ASSY	1
90445-14808	HOSE	1
2GS-E1102-00	CYLINDER HEAD	1

3. Applicable Serial No. and Color Code

1	Frame Serial No	XXX	2GS1	X	1	X	X	X	xxxxxx
		Mfr Code	Model Code	Prod No Code	Variant Code	Month Code	Year Code	Factory Code	Serial No
2	Engine Serial No		2GS1	xxxxxx					
			Model Code	Serial No.					



Colour Code	Colour Name	Abbreviation
0033	Yamaha Black	YB
0121	Vivid Red Cocktail 1	VRC1

NOTICE

The description and illustration in this Parts Catalogue may not necessarily match with the physical appearance of the parts.

INDIA YAMAHA MOTOR PVT. LTD. reserves the right to carry out modifications on the vehicle, parts or accessories, as may be considered necessary, without being obliged to update this Parts Catalogue immediately.

No part of this Publication may be reproduced without written permission of INDIA YAMAHA MOTOR PVT. LTD.
Spare Parts Division

1) Parts number structure

1) Common Parts number

XXX-XXXXX-XX-XX

Example

2GS-E1102-00-00 -CYLINDER HEAD ASSY

Model

Function code
Major classification # E--F--H

Design Serial number

Design Revision
Change Modification

Color Codes Painted Parts

eg:- 2GS	Major classification	YMC number	Local number
	Engine	1	E
	Chassis	2	F
	Electrical	8	H

00 → 01 → 02 → 09	Revision
00 → 10 → 11 → 19	Design
10 → 20 → 21 → 29	Further Design change

eg:- 1X/P0 2X/P1 3X/P2	Note:- 1) 'WE' indicates Kit Assy. fixed by service for market. 2) 'XF' indicates Sub Assy. & individual Parts not serviceable fixed by manufacturing.
---------------------------------	--

Note:- Only Colored parts are 12 digit in Catalog - Rest are 10 Digits(Non-Coloured Parts)

2) Standard parts number /Regular parts number

Standard parts number ;

9XX-XXXXXXX

→ Type of Parts Ex:-

- 947XX=Plug spark
- 932XX="O" Ring
- 985XX=Screw pan head

Regular parts number ;

9XXXX-XXXXX

Category Code Ex:-

- 901XX=Bolt and Nut
- 902XX=Washer and Rivet
- 903XX=Bush and Collor
- 904XX=Hose and Clamp
- 905XX=Springand spacer

CONTENTS

ENGINE

CYLINDER	2
CRANKSHAFT & PISTON	3
VALVE	4
CAMSHAFT & CHAIN	5
OIL PUMP.....	6
INTAKE	7
EXHAUST.....	8
CRANKCASE	9
CRANKCASE COVER 1	10
STARTER CLUTCH	11
CLUTCH	12
TRANSMISSION	13
SHIFT CAM FORK	14
SHIFT SHAFT.....	15

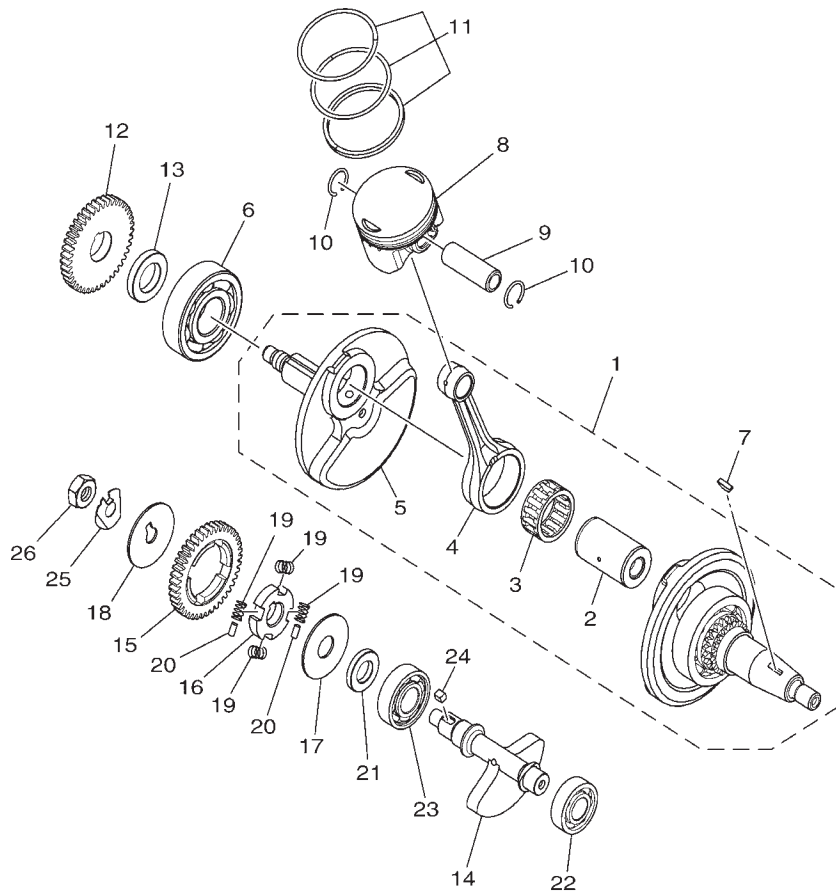
CHASSIS

FRAME	16
FENDER	17
SIDE COVER	18
REAR ARM. & SUSPENSION	19
STEERING	20
FRONT FORK	21
FUEL TANK	23

FUEL TANK-2	25
SEAT	26
FRONT WHEEL	27
FRONT BRAKE CALIPER	28
REAR WHEEL	29
STEERING HANDLE & CABLE	31
FRONT MASTER CYLINDER	32
STAND & FOOTREST	33
STAND & FOOTREST-2	34
GENERATOR.....	35
STARTER MOTOR	36
FLASHER LIGHT.....	37
METER	38
HEAD LIGHT	39
TAIL LIGHT	40
HANDLE SWITCH & LEVER	41
ELECTRICAL 1	42
ELECTRICAL 2	43

NUMERICAL INDEX

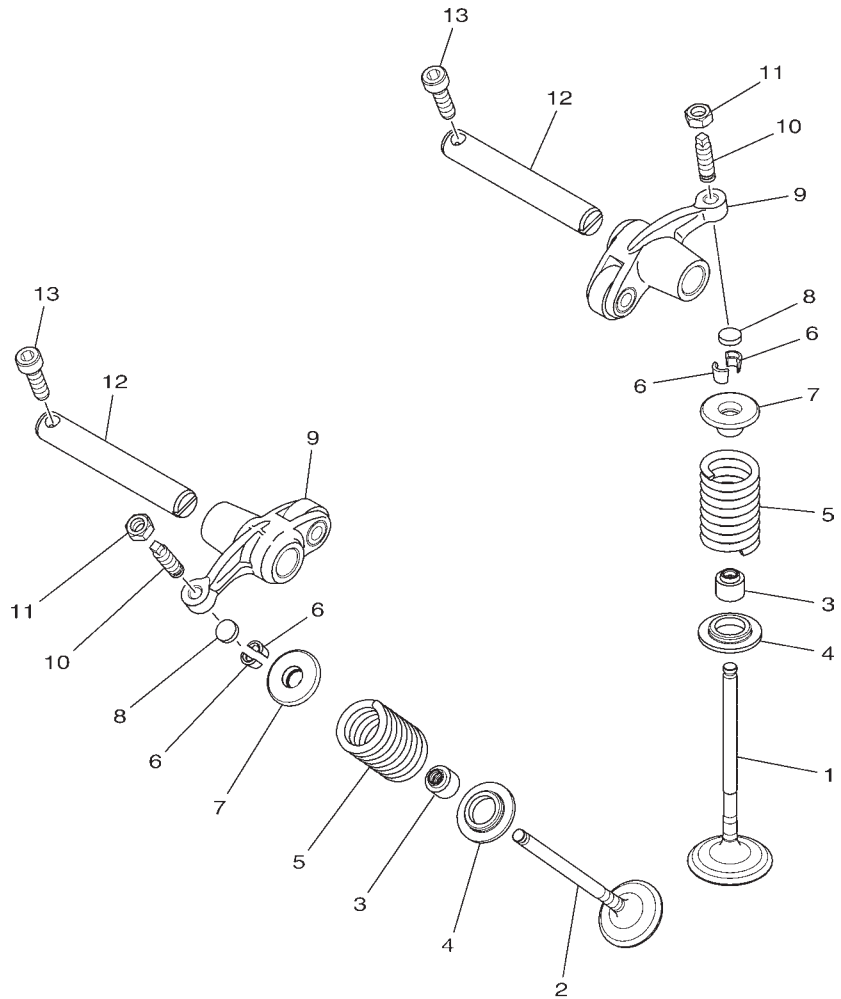
FIG. 2 (110) CRANKSHAFT & PISTON



REF. NO.	PART NO.	PART NAME	2GS1				REMARKS
1	2GS-E1400-09	CRANKSHAFT ASSY	1				
2	21C-E1681-01	.PIN, CRANK 1	1				Not Serviceable
3	93310-628X0	.BEARING	1				Not Serviceable
4	2GS-E1651-00	.ROD, CONNECTING	1				Not Serviceable
5	2GS-E1422-00	.CRANK 2	1				Not Serviceable
6	93306-305YC	BEARING	1				
7	90280-03017	KEY, WOODRUFF	1				
8	2GS-E1631-00	PISTON (STD)	1				
	2GS-E1636-09	PISTON (0.50MM O/S)	1				AP
	2GS-E1638-09	PISTON (1.00MM O/S)	1				AP
9	21C-E1633-00	PIN, PISTON	1				
10	93450-16812	CIRCLIP	2				
11	2GS-E1603-00	PISTON RING SET (STD)	1				
	2GS-E1605-00	PISTON RING SET (0.50MM O/S)	1				AP
	2GS-E1607-00	PISTON RING SET (1.00MM O/S)	1				AP
12	2GS-E1536-00	GEAR, DRIVE	1				
13	90387-20813	COLLAR	1				
14	2GS-E1454-00	WEIGHT 1	1				
15	2GS-E1531-00	GEAR, BALANCE WEIGHT	1				
16	21C-E1496-20	BOSS, BUFFER	1				
17	90201-15022	WASHER, PLATE	1				
18	90214-10006	WASHER, CLAW	1				
19	54B-E1476-00	SPRING	4				
20	21C-E3362-00	ROLLER	2				
21	90387-155J0	COLLAR	1				
22	93306-252YG	BEARING	1				
23	93306-253Y6	BEARING	1				
24	90282-05031	KEY, STRAIGHT	1				
25	90215-10284	WASHER, LOCK	1				
26	90170-10012	NUT	1				



FIG. 3 (1M0) VALVE

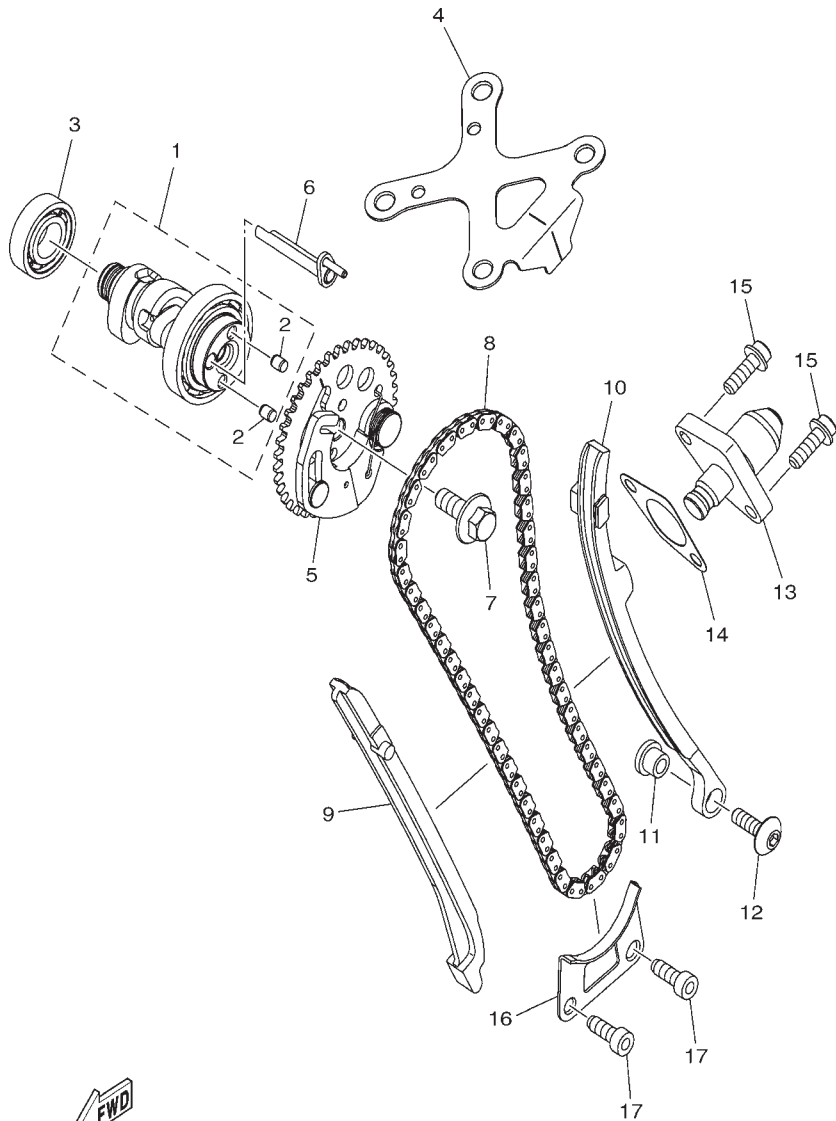


REF. NO.	PART NO.	PART NAME	2GS1				REMARKS
1	2GS-E2111-00	VALVE, INTAKE	1				
2	2GS-E2121-00	VALVE, EXHAUST	1				
3	38B-E2119-00	SEAL, VALVE STEM	2				
4	2GS-E2126-00	SEAT, VALVE SPRING 2	2				
5	2GS-E2113-00	SPRING, VALVE INNER	2				
6	3S0-E2118-00	LOCK, VALVE SPRING RETAINER	4				
7	4D9-12117-00	RETAINER, VALVE SPRING	2				
8	52S-E2169-10	PAD, ADJUSTING	2				
9	1ST-E2151-00	ARM, VALVE ROCKER	2				
10	2GS-12159-00	SCREW, VALVE ADJUSTING	2				
11	90170-05302	NUT	2				
12	21C-E2156-00	SHAFT, ROCKER 2	2				
13	91312-05016	BOLT	2				



2GS1470-P030

FIG. 4 (1N0) CAMSHAFT & CHAIN

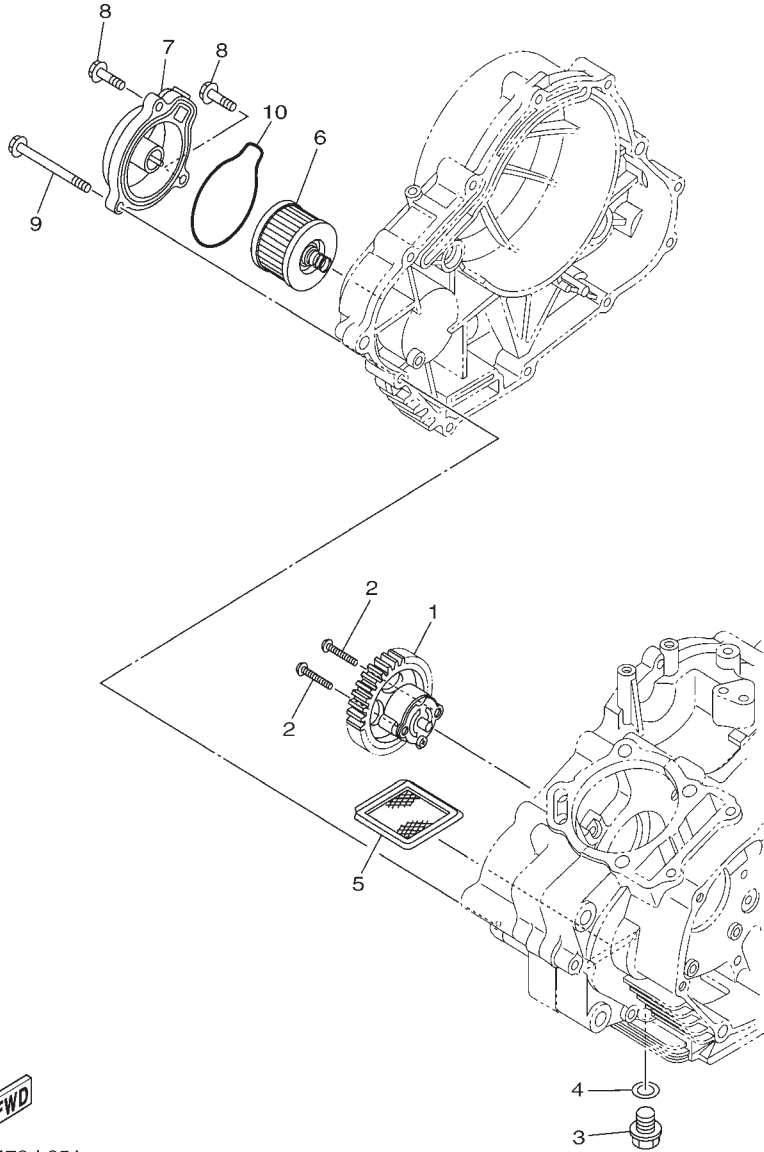


REF. NO.	PART NO.	PART NAME	2GS1				REMARKS
1	2GS-E2170-00	CAMSHAFT ASSY 1	1				
2	93605-06800	.PIN, DOWEL	2				
3	93306-002YV	BEARING	1				
4	2GS-E111F-00	PLATE	1				
5	2GS-E2280-00	DECOMPRESSION ASSY	1				
6	1PM-E2288-00	CAM, DECOMPRESSION	1				
7	90105-08196	BOLT, FLANGE	1				
8	94568-G2096	CHAIN	1				
9	21C-E2231-00	GUIDE, STOPPER 1	1				
10	2GS-E2241-00	GUIDE, STOPPER 2	1				
11	4LS-E5598-00	COLLAR	1				
12	90149-06829	SCREW	1				
13	21C-E2210-02	TENSIONER ASSY, CAM CHAIN	1				
14	2GS-E2213-00	GASKET, TENSIONER CASE	1				
15	90110-06393	BOLT, HEXAGON SOCKET HEAD	2				
16	21C-E2437-00	STOPPER	1				
17	91317-06016	BOLT	2				



2GS1470-P040

FIG. 5 (2C0) OIL PUMP

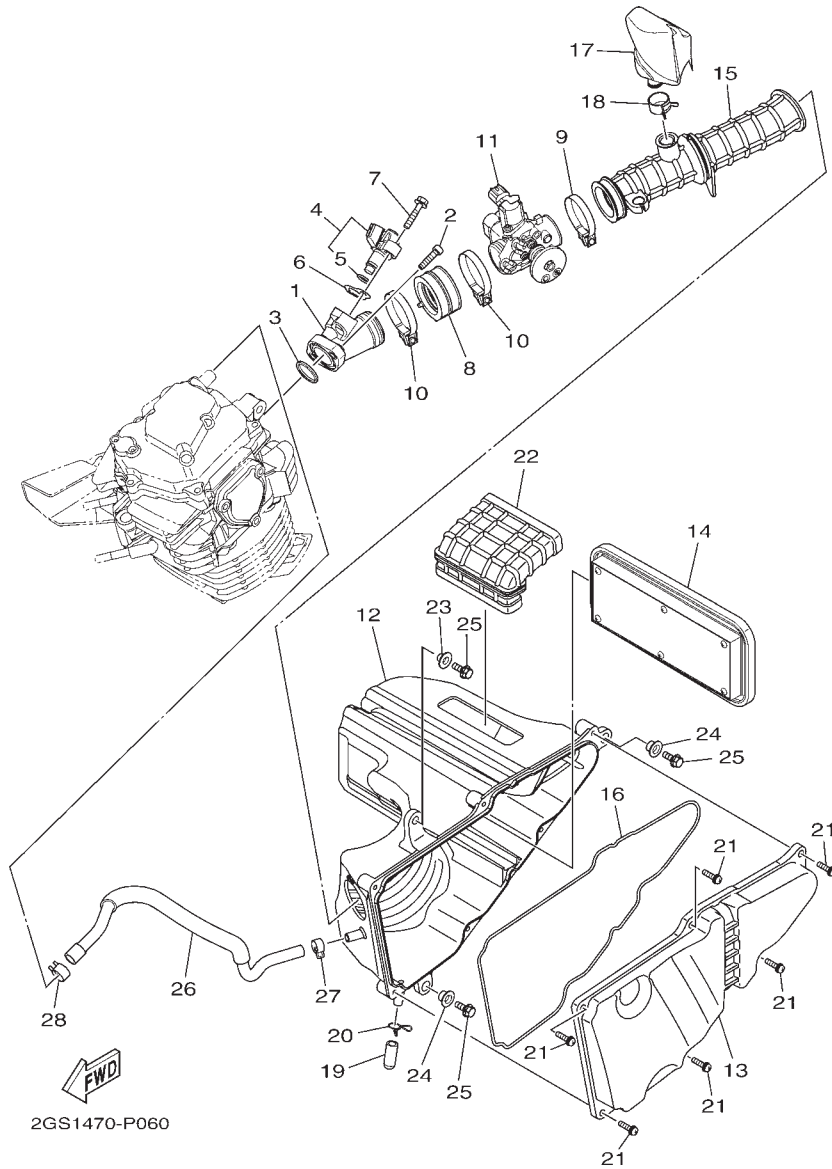


REF. NO.	PART NO.	PART NAME	2GSS1				REMARKS
1	54B-E3300-00	OIL PUMPASSY	1				
2	90111-05808	BOLT,HEX. SOCKET BUTTON	2				
3	90340-12808	PLUG, STRAIGHT SCREW	1				
4	90430-12227	GASKET	1				
5	4LS-E3411-00	STRAINER, OIL	1				
6	21C-E3440-00	ELEMENT ASSY, OIL CLEANER	1				
7	21C-E3447-00	COVER, OIL ELEMENT	1				
8	95022-06020	BOLT, FLANGE	2				
9	95022-06065	BOLT, FLANGE	1				
10	21C-E3449-00	GASKET, ELEMENT COVER	1				



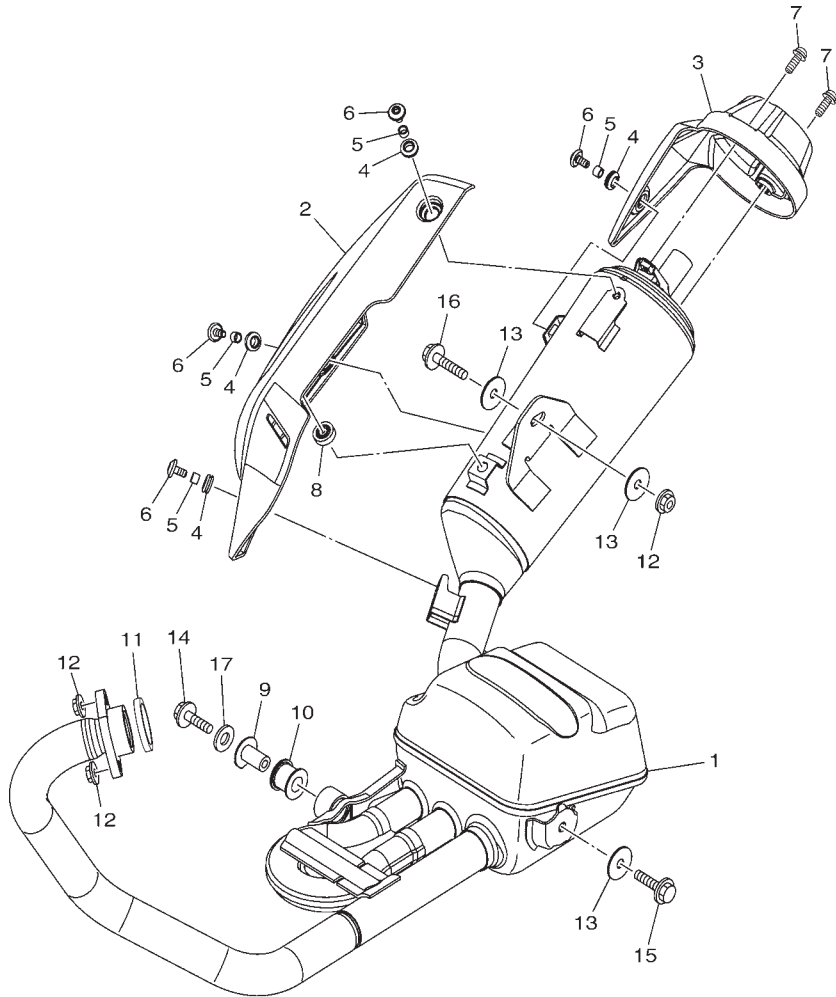
1PM1470-L051

FIG. 6 (2J0) INTAKE



REF. NO.	PART NO.	PART NAME	2GS1				REMARKS
1	2GS-E3585-00	MANIFOLD	1				
2	91317-06025	BOLT	2				
3	2GS-E3645-00	GASKET, MANIFOLD 1	1				
4	2GS-E3770-00	INJECTOR ASSY	1				
5	5CA-E4147-00	.O-RING	1				
6	2GS-E3557-00	GASKET	1				
7	95812-06030	BOLT, FLANGE	1				
8	2GS-E3635-00	JOINT, INTAKE 1	1				
9	90450-43805	HOSE CLAMP ASSY	1				
10	90450-48805	HOSE CLAMP ASSY	2				
11	2GS-E3750-00	THROTTLE BODY ASSY	1				
12	2GS-E4411-00	CASE, AIR CLEANER 1	1				
13	2GS-E4412-00	CAP, CLEANER CASE 1	1				
14	2GS-E4450-00	ELEMENT ASSY, AIR CLEANER	1				
15	2GS-E4453-00	JOINT, AIR CLEANER 1	1				
16	2GS-E4452-00	SEAL	1				
17	2GS-E4877-00	RESONATOR	1				
18	90467-20050	CLIP	1				
19	21C-E443E-00	PIPE, DRAIN	1				
20	90467-12800	CLIP	1				
21	97602-05320	SCREW, PAN HEAD WITH WASHER	6				
22	2GS-E4437-00	DUCT	1				
23	90387-06737	COLLAR	1				
24	90387-09806	COLLAR	2				
25	95827-08016	BOLT, FLANGE	3				
26	2GS-E1166-00	PIPE, BREATHER 1	1				
27	90467-13816	CLIP	1				
28	90467-15803	CLIP	1				

FIG. 7 (2N0) EXHAUST

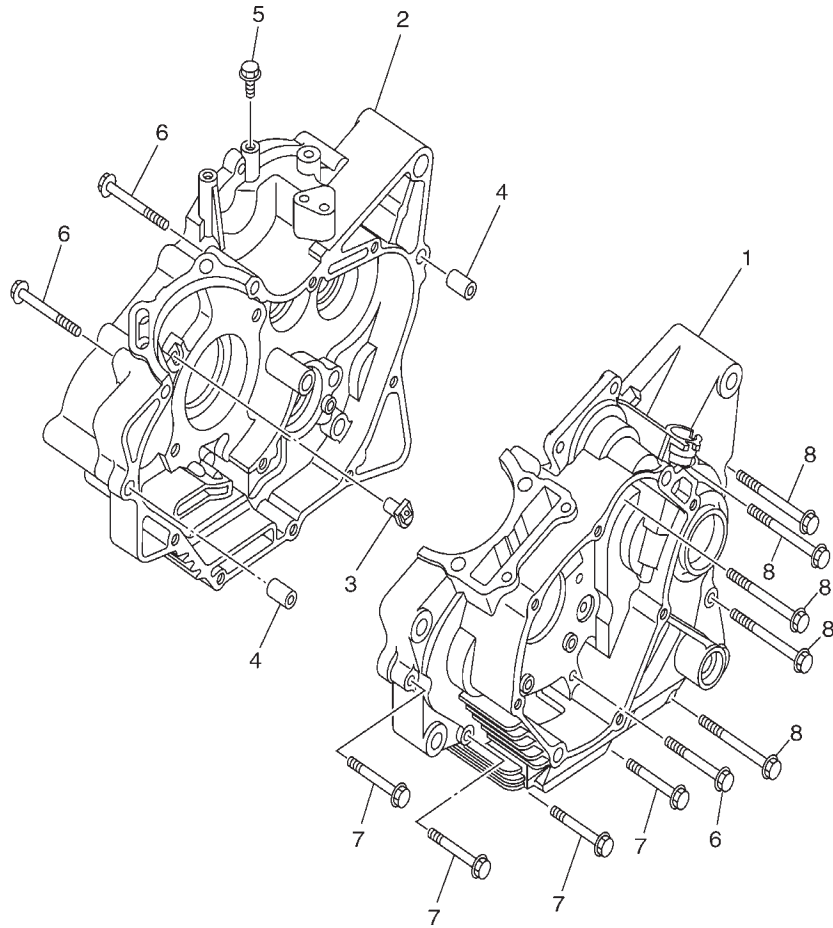


REF. NO.	PART NO.	PART NAME	2GS1				REMARKS
1	2GS-E4703-00	MUFFLER COMP. 1	1				
2	2GS-E4718-00	PROTECTOR, MUFFLER 1	1				
3	2GS-E4799-00	CAP	1				
4	90480-12812	GROMMET	4				
5	90387-06023	COLLAR	4				
6	90111-06826	BOLT,HEX. SOCKET BUTTON	4				
7	90111-06807	BOLT,HEX. SOCKET BUTTON	2				
8	54B-E4757-00	DAMPER, MUFFLER 2	1				
9	21C-E4775-00	NUT	1				
10	20P-E4747-00	DAMPER, MUFFLER	1				
11	21C-E4613-00	GASKET, EXHAUST PIPE	1				
12	95707-08500	NUT, FLANGE	3				
13	90201-08612	WASHER, PLATE	3				
14	95802-08025	BOLT, FLANGE	1				
15	95802-08035	BOLT, FLANGE	1				
16	90105-08862	BOLT, FLANGE	1				
17	90201-087F0	WASHER, PLATE	1				



2GS1470-P070

FIG. 8 (2R0) CRANKCASE

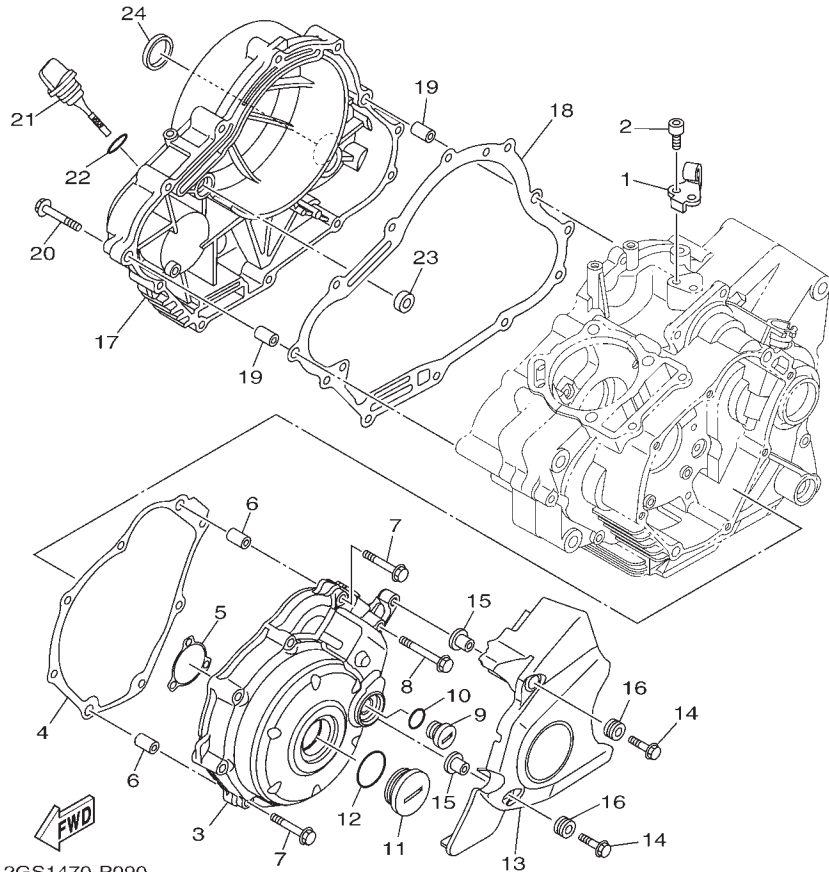
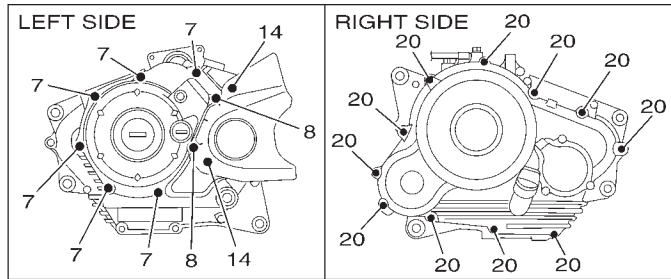


REF. NO.	PART NO.	PART NAME	2GSS1				REMARKS
1	54B-E5111-00	CRANKCASE 1	1				
2	54B-E5121-01	CRANKCASE 2	1				
3	21C-E5155-00	NOZZLE 3	1				
4	91830-21014	PIN, DOWEL	2				
5	95802-06010	BOLT, FLANGE	1				
6	95022-06055	BOLT, FLANGE	3				
7	95022-06045	BOLT, FLANGE	4				
8	95022-06070	BOLT, FLANGE	5				



21CG470-M090

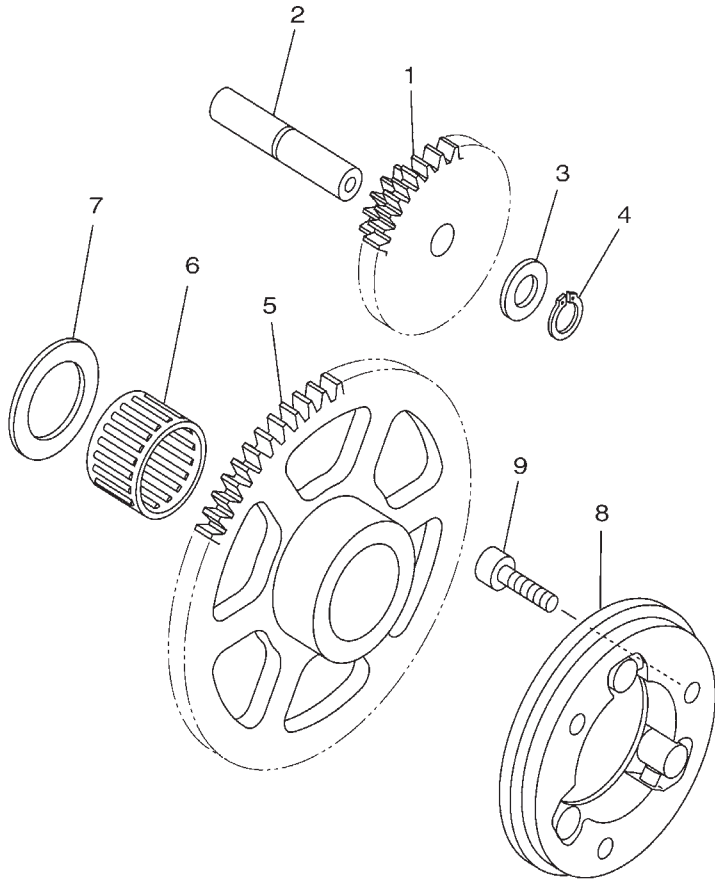
FIG. 9 (2S0) CRANKCASE COVER 1



2GS1470-P090

REF. NO.	PART NO.	PART NAME	2GS1				REMARKS
1	21C-E5441-00	HOLDER, CLUTCH CABLE	1				
2	91312-06014	BOLT	2				
3	2GS-E5411-00	COVER, CRANKCASE 1	1				
4	21C-E5451-10	GASKET, CRANKCASE COVER 1	1				
5	45P-E5353-00	GASKET, DRAIN	1				
6	91830-21014	PIN, DOWEL	2				
7	95022-06040	BOLT, FLANGE	6				
8	95022-06050	BOLT, FLANGE	2				
9	90340-14117	PLUG, STRAIGHT SCREW	1				
10	93210-14899	O-RING	1				
11	90340-32805	PLUG, STRAIGHT SCREW	1				
12	93210-32814	O-RING	1				
13	2GS-E5418-00	COVER, CHAIN CASE	1				
14	95807-06020	BOLT, FLANGE	2				
15	90387-068C9	COLLAR	2				
16	90480-12812	GROMMET	2				
17	21C-E5421-00	COVER, CRANKCASE 2	1				
18	21C-E5461-10	GASKET, CRANKCASE COVER 2	1				
19	91830-21014	PIN, DOWEL	2				
20	95022-06040	BOLT, FLANGE	11				
21	54B-E5362-00	PLUG, OIL LEVEL	1				
22	93210-19809	O-RING	1				
23	93101-10838	OIL SEAL	1				
24	90338-30802	PLUG	1				

FIG. 10 (2V0) STARTER CLUTCH

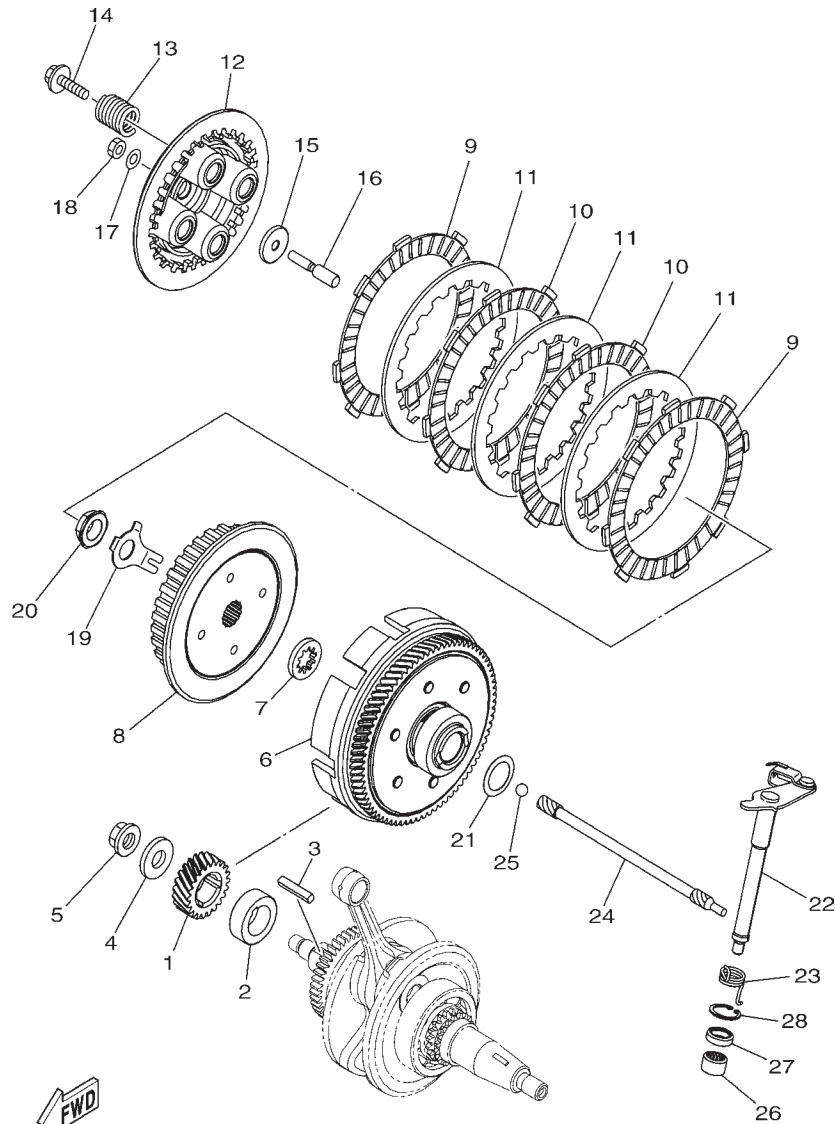


REF. NO.	PART NO.	PART NAME	2GS1				REMARKS
1	1PM-E5514-00	GEAR 2	1				
2	21C-E5521-00	SHAFT 1	1				
3	90201-105E8	WASHER, PLATE	1				
4	99009-10400	CIRCLIP	1				
5	1PM-E5524-10	WHEEL, STARTER	1				
6	93310-325X3	BEARING	1				
7	90201-256K6	WASHER, PLATE	1				
8	2GS-E5580-00	STARTER CLUTCH OUTER ASSY	1				
9	91314-06020	BOLT	3				



1PS1473-K120

FIG. 11 (2X0) CLUTCH

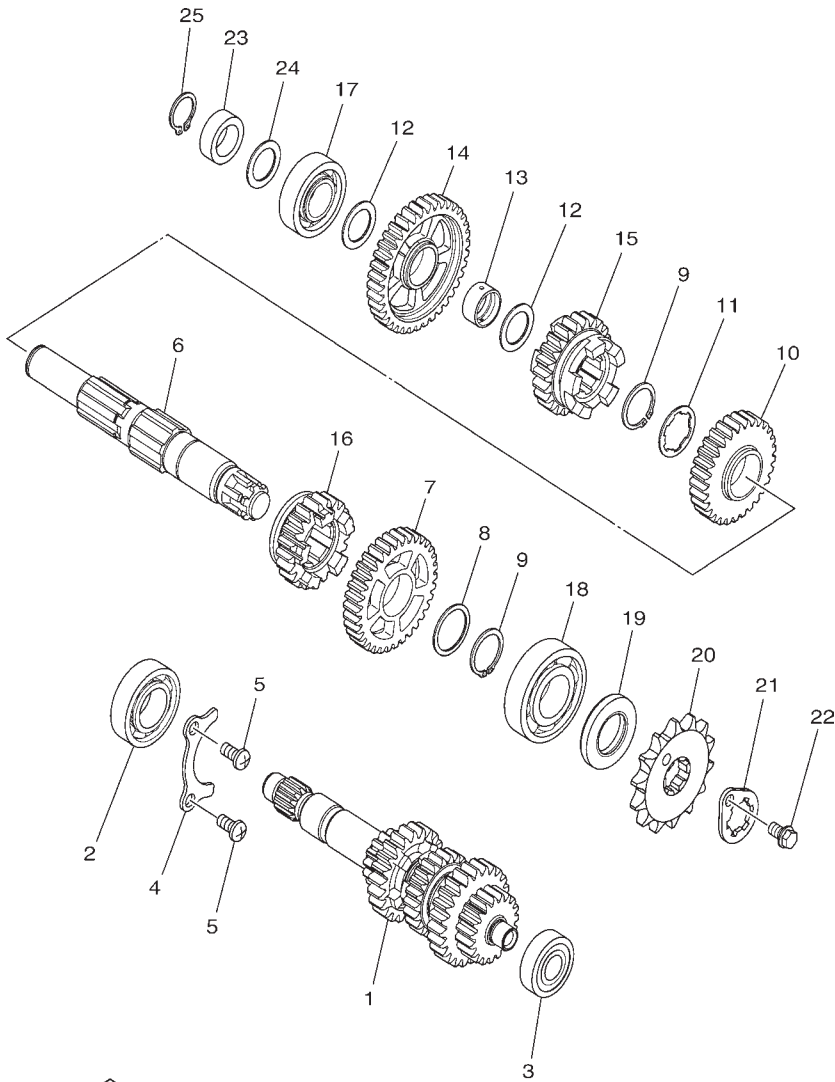


2GS1470-P110

REF. NO.	PART NO.	PART NAME	2GS1				REMARKS
1	2GS-E6111-00	GEAR, PRIMARY DRIVE	1				
2	54B-E7258-00	COLLAR 1	1				
3	21C-E6193-00	KEY, FEATHER	1				
4	90201-12019	WASHER, PLATE	1				
5	90179-12802	NUT	1				
6	2GS-E6150-00	PRIMARY DRIVEN GEAR COMP.	1				
7	21C-E6154-00	PLATE, THRUST 1	1				
8	21C-E6371-00	BOSS, CLUTCH	1				
9	54B-E6321-00	PLATE, FRICTION	2				
10	21C-E6331-00	PLATE, FRICTION 2	2				
11	21C-E6324-00	PLATE, CLUTCH 1	3				
12	54B-E6351-00	PLATE, PRESSURE 1	1				
13	21C-E6333-00	SPRING, CLUTCH 1	4				
14	21C-E6337-00	SCREW, SPRING	4				
15	21C-E6358-00	PLATE, PUSH	1				
16	21C-E6356-01	ROD, PUSH 1	1				
17	54B-E6144-00	WASHER	1				
18	3C1-E6344-00	NUT, ADJUSTING	1				
19	21C-E6135-10	WASHER, LOCK	1				
20	90179-14001	NUT	1				
21	90208-20003	WASHER, CONICAL SPRING	1				
22	21C-E6380-02	PUSH LEVER ASSY	1				
23	1PM-E6345-00	SPRING, RETURN	1				
24	54B-E6357-00	ROD, PUSH 2	1				
25	93505-16844	BALL	1				
26	93315-112Y9	BEARING	1				
27	93102-12877	OIL SEAL	1				
28	99009-20500	CIRCLIP	1				

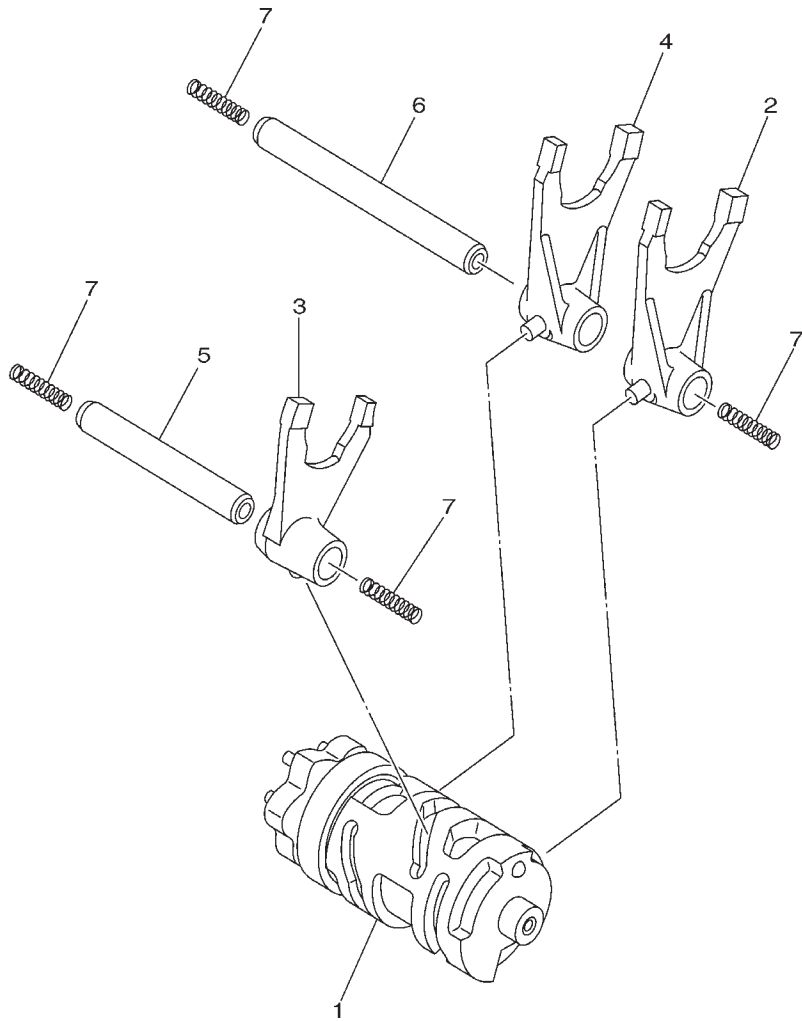
FIG. 12 (2Z0) TRANSMISSION

REF. NO.	PART NO.	PART NAME	2GS1				REMARKS
1	2GS-E7410-00	MAIN AXLE COMP.	1				
2	93306-054YE	BEARING	1				UR
	93306-054Y6	BEARING	1				UR
3	93306-201YE	BEARING	1				
4	21C-E7471-00	PLATE, COVER	1				
5	98502-06012	SCREW, PAN HEAD	2				
6	2GS-E7402-00	DRIVE AXLE ASSY	1				UR
	21C-E7402-40	DRIVE AXLE ASSY	1				UR
7	2GS-E7221-00	GEAR, 2ND WHEEL	1				
8	90201-22793	WASHER, PLATE	1				
9	93410-22039	CIRCLIP	2				
10	2GS-E7231-00	GEAR, 3RD WHEEL	1				
11	90209-18208	WASHER	1				
12	90201-178D3	WASHER, PLATE	2				
13	21C-E7258-00	COLLAR 1	1				
14	2GS-E7211-00	GEAR, 1ST WHEEL	1				
15	2GS-E7241-00	GEAR, 4TH WHEEL	1				
16	2GS-E7251-00	GEAR, 5TH WHEEL	1				
17	93306-253Y7	BEARING	1				
18	93306-272X4	BEARING	1				UR
	93306-272X1	BEARING	1				UR
19	93102-22818	OIL SEAL	1				
20	93822-14800	SPROCKET, DRIVE (14T)	1				
21	4LS-E7456-00	HOLDER, SPROCKET	1				
22	95022-06010	BOLT, FLANGE	1				
23	21C-E5666-00	SPACER	1				
24	90201-178D3	WASHER, PLATE	1				
25	99009-17400	CIRCLIP	1				



2GS1470-P120

FIG. 13 (3J0) SHIFT CAM & FORK

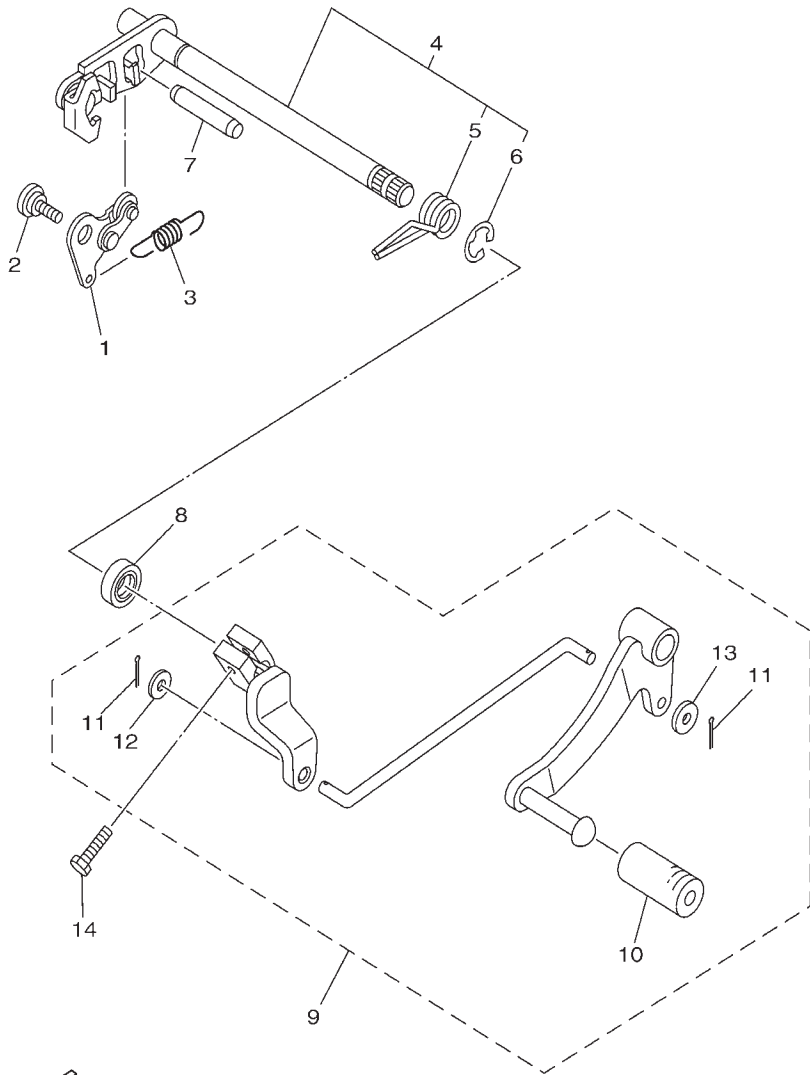


REF. NO.	PART NO.	PART NAME	2GS1				REMARKS
1	2GS-E8540-00	SHIFT CAM ASSY	1				
2	21C-E8511-00	FORK, SHIFT 1	1				
3	21C-E8512-00	FORK, SHIFT 2	1				
4	21C-E8513-00	FORK, SHIFT 3	1				
5	21C-E8531-00	BAR, SHIFT FORK GUIDE 1	1				
6	21C-E8535-00	BAR, SHIFT FORK GUIDE 2	1				
7	90501-06800	SPRING, COMPRESSION	4				



21C1470-G140

FIG. 14 (3K0) SHIFT SHAFT

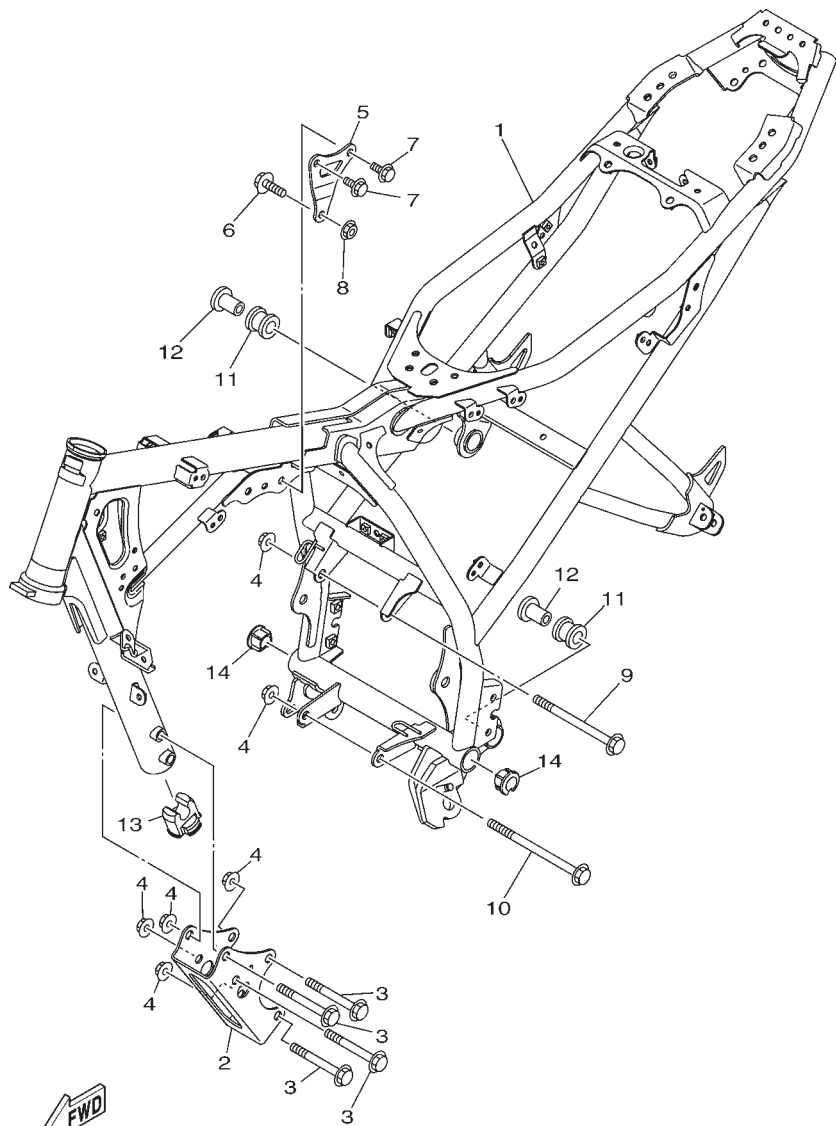


21C1470-G152

REF. NO.	PART NO.	PART NAME	2GS1				REMARKS
1	21C-E8140-00	STOPPER LEVER ASSY	1				
2	90109-06259	BOLT	1				
3	21C-E8337-00	SPRING	1				
4	21C-E8101-01	SHIFT SHAFT ASSY	1				
5	90508-32805	.SPRING, TORSION	1				
6	99001-10600	.CIRCLIP	1				
7	93608-43238	PIN, DOWEL	1				
8	93102-12875	OIL SEAL	1				
9	2GS-E8110-00	SHIFT PEDAL ASSY	1				
10	20P-E8113-00	.COVER, SHIFT PEDAL	1				
11	91401-20012	.PIN, COTTER	2				
12	92990-06200	.WASHER	1				
13	90201-060H9	.WASHER, PLATE	1				
14	97012-06020	BOLT	1				

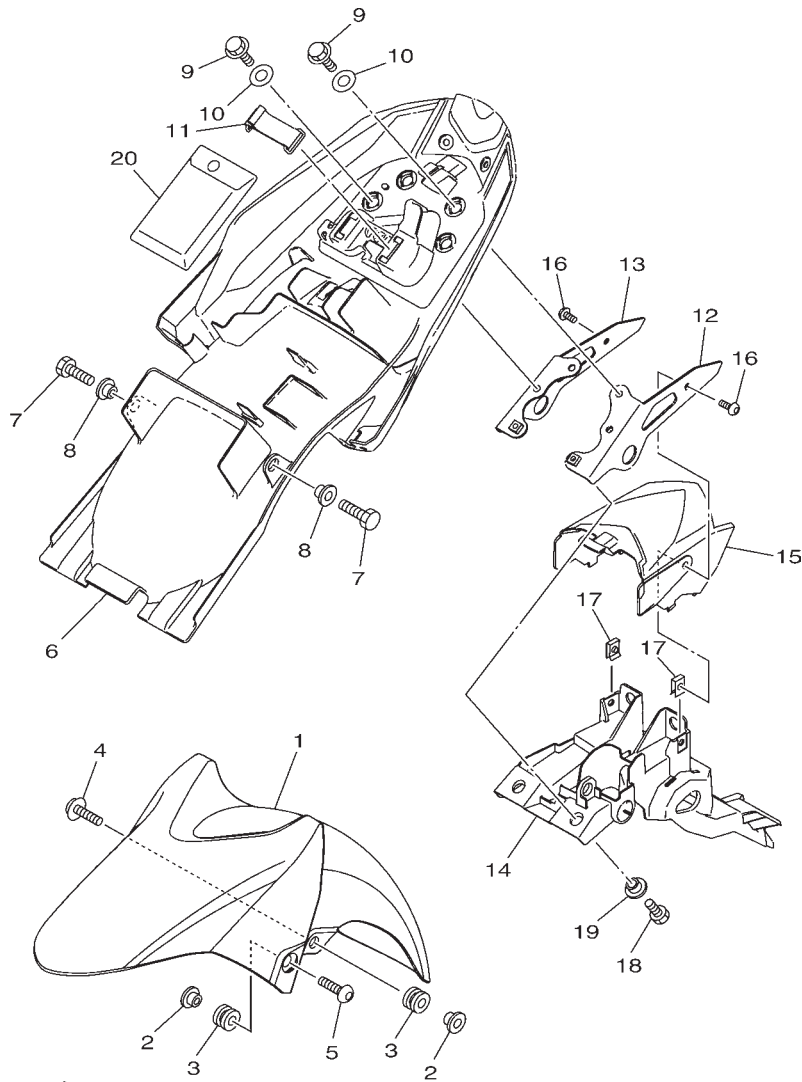
FIG. 15 (3M0) FRAME

REF. NO.	PART NO.	PART NAME	2GS1				REMARKS
1	2GS-F1110-00	FRAME COMP.	1				
2	2GS-F1316-00	STAY, ENGINE 2	1				
3	95812-10080	BOLT, FLANGE	4				
4	90179-10811	NUT	6				
5	2GS-F1317-00	STAY, ENGINE 3	1				
6	90105-08002	BOLT, FLANGE	1				
7	95812-08016	BOLT, FLANGE	2				
8	90179-08674	NUT	1				
9	95817-10130	BOLT, FLANGE	1				
10	90105-10861	BOLT, FLANGE	1				
11	20P-E4747-00	DAMPER, MUFFLER	2				
12	90387-08822	COLLAR	2				
13	21C-F1638-02	DAMPER 1	1				
14	2GS-F1279-00	PLUG, BLIND	2				



2GS1470-P150

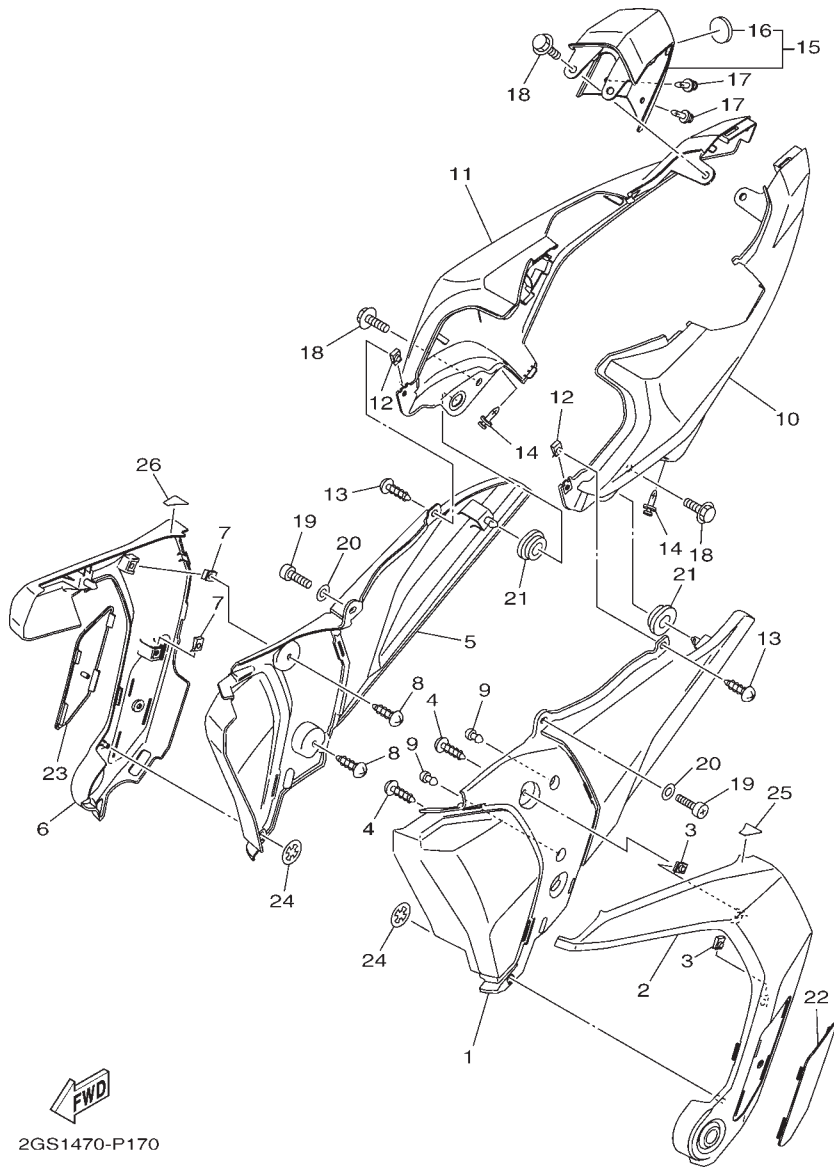
FIG. 16 (3Q0) FENDER



2GS1470-P160

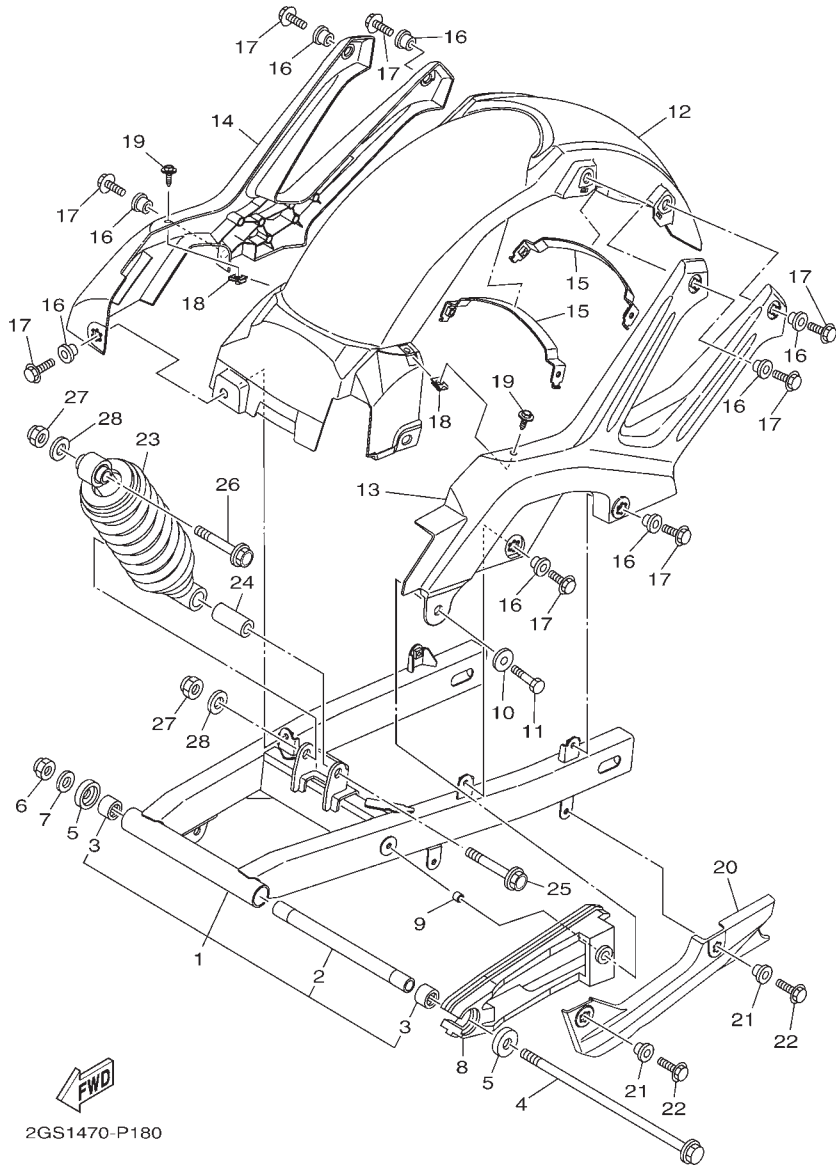
REF. NO.	PART NO.	PART NAME	2GS1			REMARKS
1	21C-F1511-00-33	FENDER, FRONT-YB (Black)	1			FOR YB
	21C-F1511-00-P2	FENDER, FRONT- VRC1 (Red)	1			FOR VRC1
2	90387-068C5	COLLAR	4			
3	90480-08801	GROMMET	4			
4	95807-06020	BOLT, FLANGE	2			
5	90111-06117	BOLT,HEX. SOCKET BUTTON	2			
6	2GS-F1611-00	FENDER, REAR	1			
7	97012-06014	BOLT	2			
8	90387-06048	COLLAR	2			
9	95827-08016	BOLT, FLANGE	4			
10	90387-08079	COLLAR	4			
11	1PM-F811G-00	BAND	1			
12	2GS-F1613-00	STAY, FENDER 1	1			
13	2GS-F1614-00	STAY, FENDER 2	1			
14	2GS-F1651-00	COVER, REAR FENDER	1			
15	2GS-F163A-00	COVER, REAR FENDER 1	1			
16	90149-06829	SCREW	2			
17	90183-06069	NUT, SPRING	2			
18	97012-06014	BOLT	2			
19	90387-06048	COLLAR	2			
20	21C-F8100-20	TOOL KIT	1			

FIG. 17 (3U0) SIDE COVER



REF. NO.	PART NO.	PART NAME	2GS1				REMARKS
1	2GS-F1711-00	COVER, SIDE 1	1				
2	2GS-F172A-00-P0	PANEL 1 - S8 (Silver)	1				S8 FOR YB,VRC1
3	90183-05807	NUT, SPRING	2				
4	97702-50012	SCREW, TAPPING	2				
5	2GS-F1721-00	COVER, SIDE 2	1				
6	2GS-F172F-00-P0	PANEL 2 - S8 (Silver)	1				S8 FOR YB,VRC1
7	90183-05807	NUT, SPRING	2				
8	97702-50012	SCREW, TAPPING	2				
9	21C-F1717-00	DAMPER	2				
10	2GS-F1731-00-33	COVER, SIDE 3 -YB (Black)	1				FOR YB
	2GS-F1731-00-P0	COVER, SIDE 3 - VRC1 (Red)	1				FOR VRC1
11	2GS-F1741-00-33	COVER, SIDE 4 - YB (Black)	1				FOR YB
	2GS-F1741-00-P0	COVER, SIDE 4 - VRC1 (Red)	1				FOR VRC1
12	90183-05807	NUT, SPRING	2				
13	97702-50012	SCREW, TAPPING	2				
14	90269-06814	RIVET	2				
15	2GS-XF17C-00-33	COVER, SIDE 5 -YB (Black)	1				UR FOR YB
	2GS-XF17C-00-P0	COVER, SIDE 5 -YB (Black)	1				UR FOR VRC1
16	5TS-F836B-02	.TUNING FORK MARK	1				
17	90269-06814	RIVET	2				
18	90119-06137	BOLT, WITH WASHER	4				
19	98507-06014	SCREW, PAN HEAD	2				
20	90201-06055	WASHER, PLATE	2				
21	90480-01558	GROMMET	2				
22	2GS-F171L-00	MOLE, SIDE COVER 1	1				
23	2GS-F171M-00	MOLE, SIDE COVER 2	1				
24	90183-05067	NUT, SPRING	2				
25	2GS-F1732-00	SEAL 1	1				
26	2GS-F1735-00	SEAL 2	1				

FIG. 18 (4A0) REAR ARM & SUSPENSION

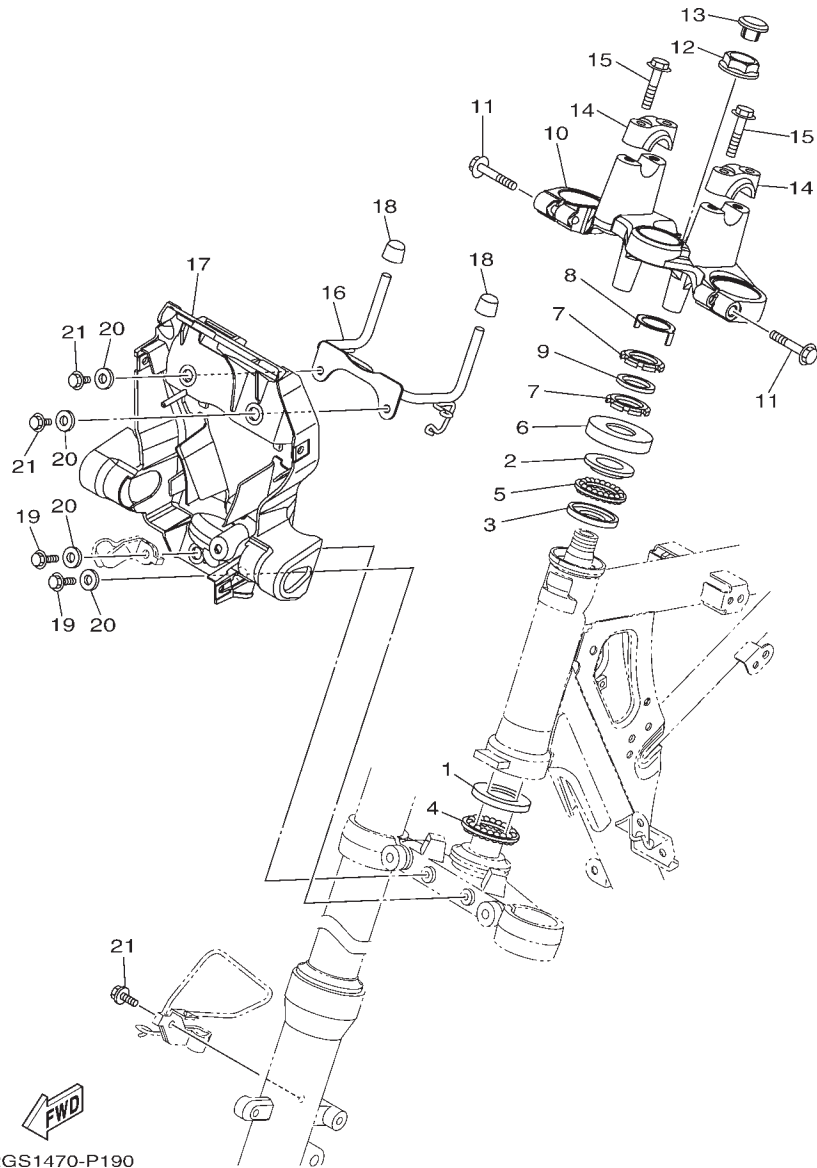


2GS1470-P180

REF. NO.	PART NO.	PART NAME	2GS1				REMARKS
1	2GS-WF211-00	REAR ARM COMP.	1				
2	90387-12863	.COLLAR	1				
3	93317-318Y5	.BEARING	2				
4	2GS-F2141-00	SHAFT, PIVOT	1				
5	20P-F2129-00	COVER, THRUST 2	2				
6	95607-12200	NUT, SELF-LOCKING	1				
7	90201-12028	WASHER, PLATE	1				
8	2GS-F2151-00	SEAL, GUARD	1				
9	90387-066J9	COLLAR	1				
10	90201-060A3	WASHER, PLATE	1				
11	95027-06016	BOLT, FLANGE	1				
12	2GS-F1650-00	REAR FENDER COMP.	1				
13	2GS-F1644-00	STAY, REAR	1				
14	2GS-F1645-00	STAY, REAR	1				
15	2GS-F164F-00	STAY 1	2				
16	90387-068N2	COLLAR	8				
17	95027-06016	BOLT, FLANGE	8				
18	90183-06069	NUT, SPRING	2				
19	90119-06060	BOLT, WITH WASHER	2				
20	21C-F2147-00	PROTECTOR, CHAIN	1				
21	90387-068S1	COLLAR	2				
22	95027-06016	BOLT, FLANGE	1				
23	2GS-F2210-00	SHOCK ABSORBER ASSY, REAR	1				
24	90387-12845	COLLAR	1				
25	90105-12057	BOLT, FLANGE	1				
26	90105-12804	BOLT, FLANGE	1				
27	95612-12100	NUT, U	2				
28	90201-122H1	WASHER, PLATE	2				

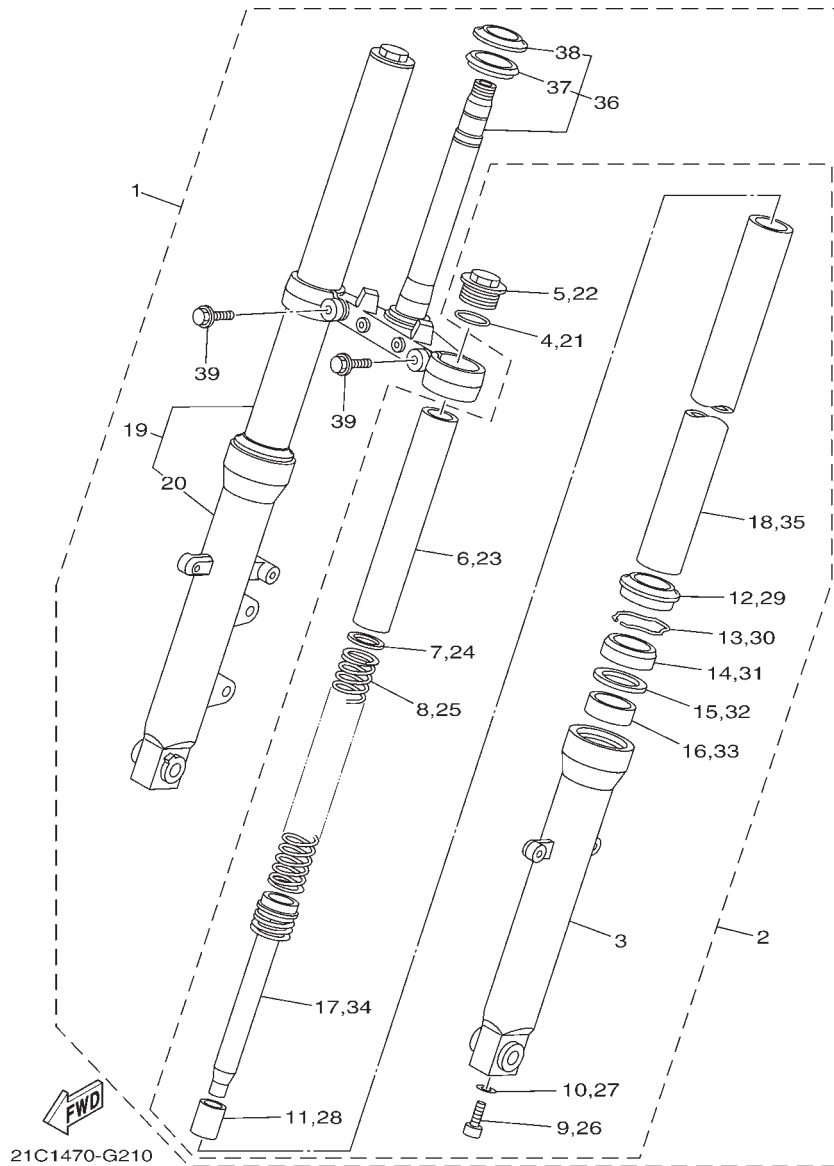
FIG. 19 (4H0) STEERING

REF. NO.	PART NO.	PART NAME	2GS1				REMARKS
1	21C-F3412-00	RACE, BALL 2	1				
2	21C-F3413-00	RACE, BALL 3	1				
3	21C-F3414-00	RACE, BALL 4	1				
4	4LS-F341E-10	RETAINER, BALL BEARING	1				
5	4LS-F341E-00	RETAINER, BALL BEARING	1				
6	5YY-F3416-00	COVER, BALL RACE 2	1				
7	90179-25615	NUT	2				
8	20P-F3418-00	WASHER, SPECIAL	1				
9	90202-26142	WASHER, PLATE	1				
10	21C-F3435-00	CROWN, HANDLE	1				
11	95022-08040	BOLT, FLANGE	2				
12	90179-22025	NUT	1				
13	2GS-F3438-00	CAP, END	1				
14	21C-F3441-00	HOLDER, HANDLE UPPER	2				
15	95022-08035	BOLT, FLANGE	4				
16	2GS-F317E-00	STAY 1	1				
17	2GS-F317F-00	STAY 2	1				
18	21C-F317J-00	DAMPER 1	2				
19	95827-08016	BOLT, FLANGE	2				
20	90387-07819	COLLAR	4				
21	95812-06012	BOLT, FLANGE	3				



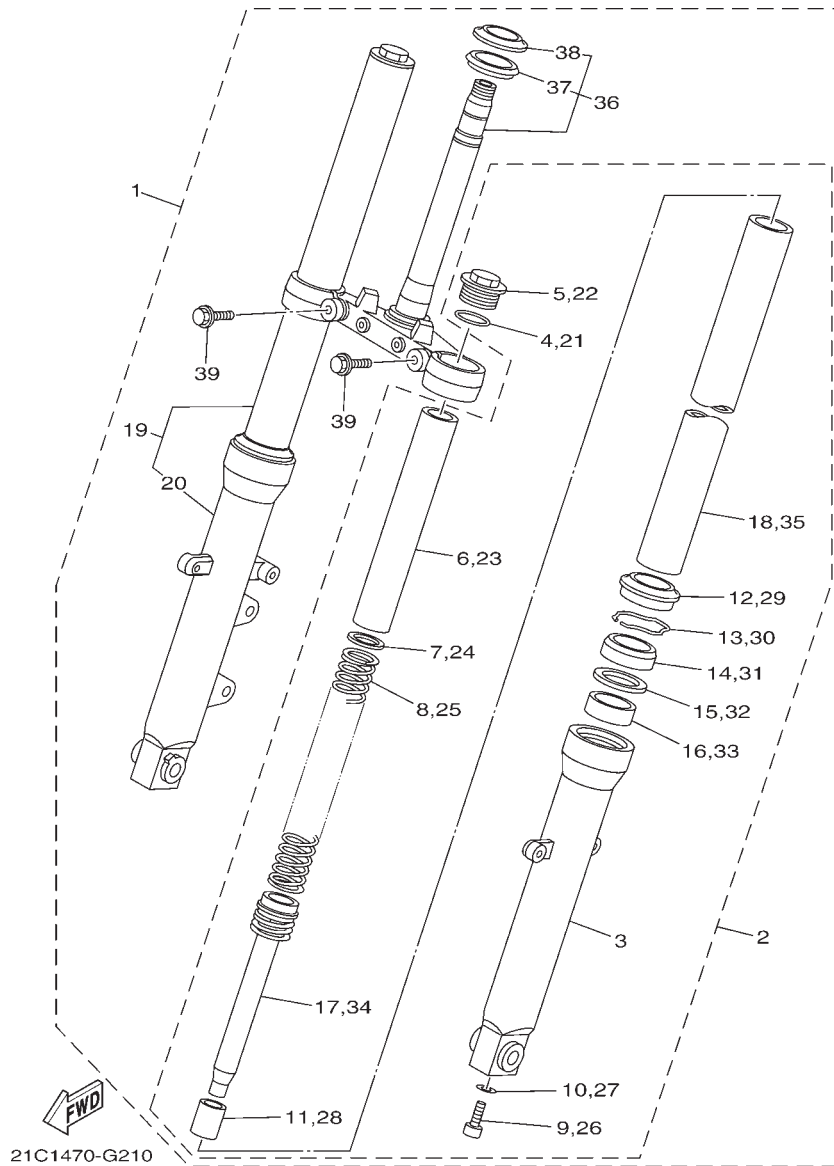
2GS1470-P190

FIG. 20 (4K0) FRONT FORK



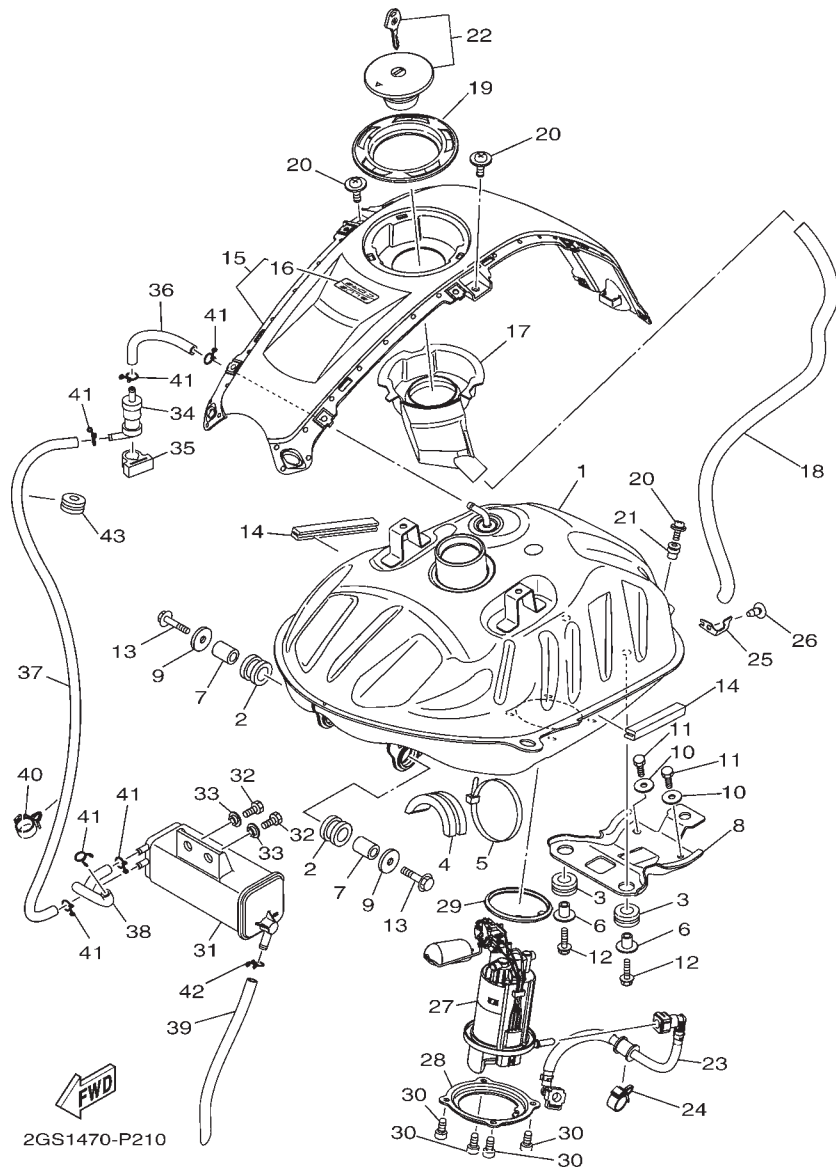
REF. NO.	PART NO.	PART NAME	2GS1				REMARKS
1	2GS-F3100-00	FRONT FORK ASSY	1				
2	2GS-F3102-00	..FRONT FORK ASSY (L.H)	1				
3	21C-F3126-01	..TUBE, OUTER (L.H)	1				
4	21C-F3114-00	..GASKET	1				
5	21C-F3111-00	..BOLT, CAP	1				
6	21C-F3118-00	..SPACER	1				
7	21C-F3149-00	..WASHER, SPRING UPPER	1				
8	21C-F3141-00	..SPRING, FRONT FORK	1				
9	21C-F3181-10	..BOLT, HEXAGON SOCKET HEAD	1				
10	21C-F3158-00	..GASKET	1				
11	21C-F3173-00	..SPINDLE, TAPER	1				
12	2GS-F3144-00	..SEAL, DUST	1				
13	21C-F3156-00	..RING, SNAP	1				
14	2GS-F3145-00	..OIL SEAL	1				
15	21C-F3146-00	..WASHER, OIL SEAL	1				
16	4FM-23125-40	..METAL, SLIDE 1	1				
17	2GS-F3170-00	..CYLINDER COMP., FRONT FORK	1				
18	21C-F3110-00	..INNER TUBE COMP.1	1				
19	2GS-F3103-00	..FRONT FORK ASSY (R.H)	1				
20	21C-F3136-01	..TUBE, OUTER	1				
21	21C-F3114-00	..GASKET	1				
22	21C-F3111-00	..BOLT, CAP	1				
23	21C-F3118-00	..SPACER	1				
24	21C-F3149-00	..WASHER, SPRING UPPER	1				
25	21C-F3141-00	..SPRING, FRONT FORK	1				
26	21C-F3181-10	..BOLT, HEXAGON SOCKET HEAD	1				
27	21C-F3158-00	..GASKET	1				
28	21C-F3173-00	..SPINDLE, TAPER	1				
29	2GS-F3144-00	..SEAL, DUST	1				
30	21C-F3156-00	..RING, SNAP	1				

FIG. 20 (4K0) FRONT FORK



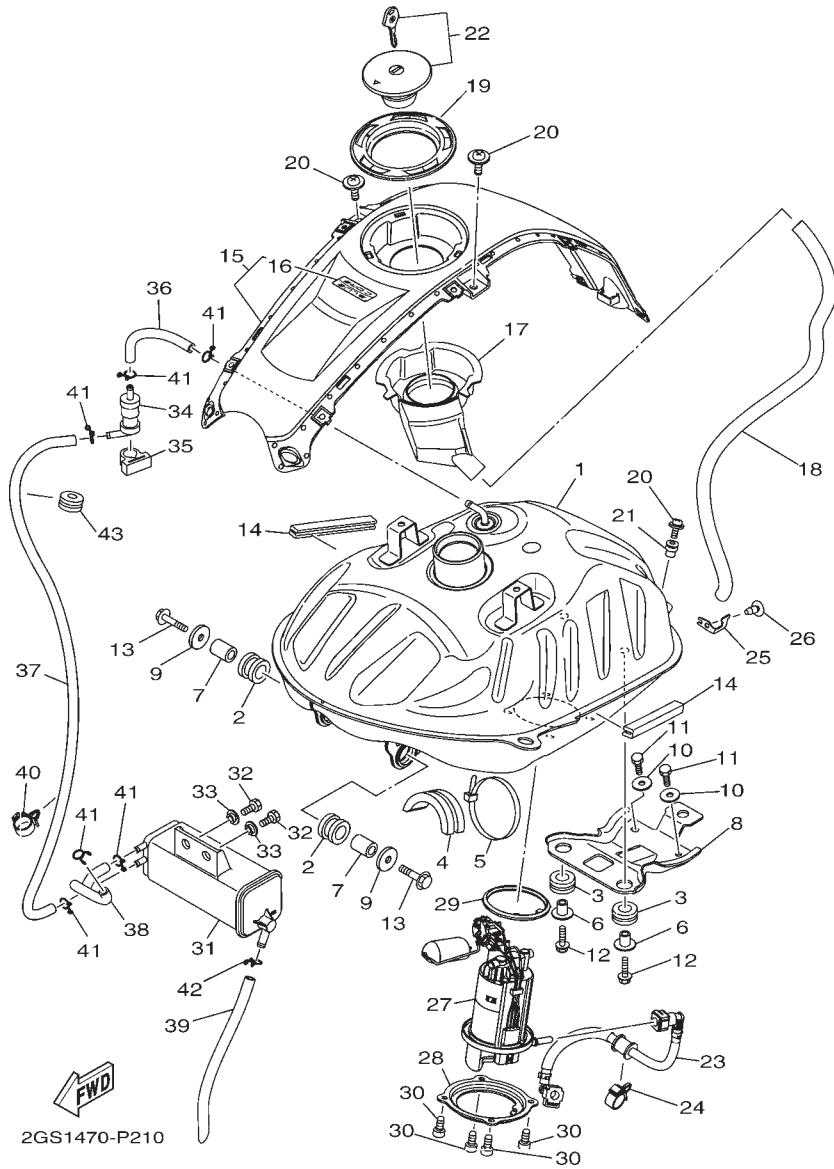
REF. NO.	PART NO.	PART NAME	2GS1			REMARKS
31	2GS-F3145-00	..OIL SEAL	1			
32	21C-F3146-00	..WASHER, OIL SEAL	1			
33	4FM-23125-40	..METAL, SLIDE 1	1			
34	2GS-F3170-00	..CYLINDER COMP., FRONT FORK	1			
35	21C-F3110-00	..INNER TUBE COMP.1	1			
36	21C-F3340-02	..UNDER BRACKET COMP.	1			
37	5YY-F3462-00	..SEAL, DUST	1			
38	21C-F3411-00	..RACE, BALL 1	1			
39	21C-F3346-00	..BOLT 1	2			

FIG. 21 (4S0) FUEL TANK



REF. NO.	PART NO.	PART NAME	2GS1				REMARKS
1	2GS-F4110-00	FUEL TANK COMP.	1				
2	21C-F4181-00	DAMPER, LOCATING 1	2				
3	90480-15363	GROMMET	2				
4	21C-F4183-00	DAMPER, LOCATING 3	1				
5	90464-80802	CLAMP	1				
6	90387-068B2	COLLAR	2				
7	90387-107H6	COLLAR	2				
8	2GS-F4191-00	BRACKET, FUEL TANK 1	1				
9	90201-060A3	WASHER, PLATE	2				
10	90201-06380	WASHER PLAIN	2				
11	97012-06014	BOLT	2				
12	90105-06169	BOLT, FLANGE	2				
13	95822-06030	BOLT, FLANGE	2				
14	21C-F4188-10	MOLD, FUEL TANK	2				
15	2GS-XF17D-00-33	COVER, TOP -YB (Black)	1				UR FOR YB
	2GS-XF17D-00-P0	COVER, TOP - VRC1 (Red)	1				UR FOR VRC1
16	2GS-F4549-00	.EMBLEM	1				
17	2GS-F414A-00	COVER, FILLER	1				
18	90445-14808	HOSE	1				
19	21C-F4614-00-P0	PLATE, CAP- S8 (Silver)	1				S8 FOR YB,VRC1
20	90159-05065	SCREW, WITH WASHER	3				
21	90179-05804	NUT	1				
22	21C-WF461-20	CAP ASSY WITH LOCK	1				
23	2GS-E3971-00	PIPE, FUEL 1	1				
24	90464-16006	CLAMP	1				
25	2GS-F4364-00	STAY	1				
26	97702-50012	SCREW, TAPPING	1				
27	2GS-E3907-00	FUEL PUMP COMP.	1				
28	2GS-F4491-00	BRACKET, FUEL PUMP	1				
29	2GS-F414G-00	SEAL	1				
30	91312-05010	BOLT	4				

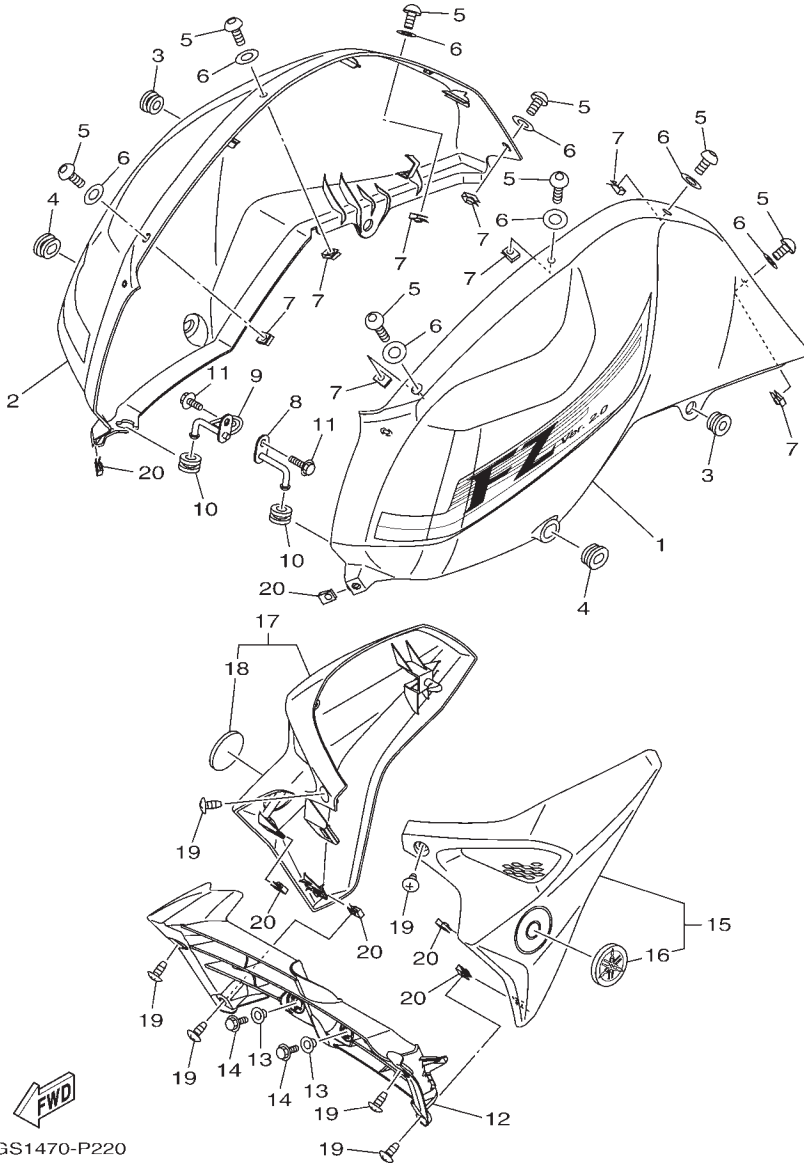
FIG. 21 (4S0) FUEL TANK



REF. NO.	PART NO.	PART NAME	2GS1				REMARKS
31	2GS-F4170-00	CANISTER ASSY	1				
32	97012-06014	BOLT	2				
33	90387-06048	COLLAR	2				
34	2GS-F4180-00	ROLL OVER VALVE ASSY	1				
35	2GS-F419A-00	HOLDER	1				
36	2GS-F4312-00	PIPE 2	1				
37	2GS-F4313-00	PIPE 3	1				
38	2GS-F4314-00	PIPE 4	1				
39	2GS-F4315-00	PIPE 5	1				
40	90464-16006	CLAMP	1				
41	90467-09006	CLIP	6				
42	90467-100A1	CLIP	1				
43	90480-15363	GROMMET	1				

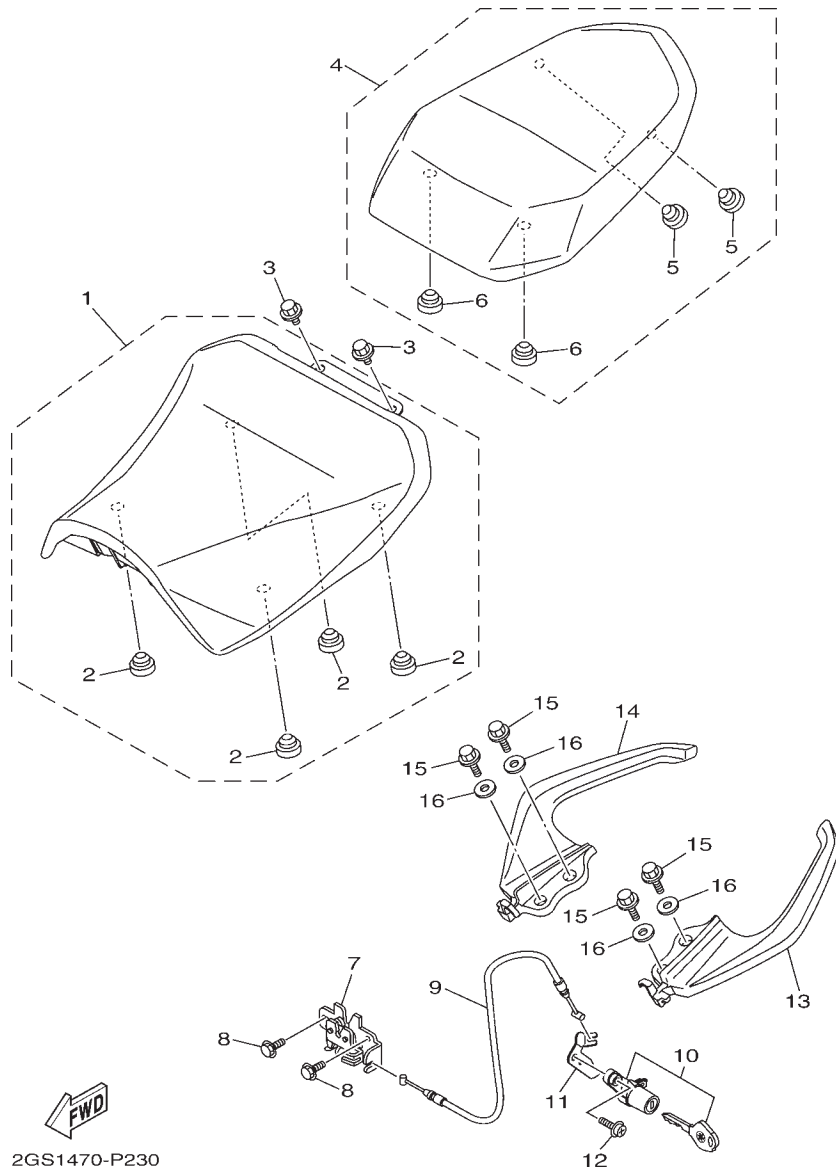
FIG. 22 (4S1) FUEL TANK 2

REF. NO.	PART NO.	PART NAME	2GS1				REMARKS
1	2GS-XF412-00-33	TANK SIDE COVER 1 -YB (Black)	1				UR FOR YB
	2GS-XF412-10-P0	TANK SIDE COVER 1 - VRC1 (Red)	1				UR FOR VRC1
2	2GS-XF413-00-33	TANK SIDE COVER 2 -YB (Black)	1				UR FOR YB
	2GS-XF413-10-P0	TANK SIDE COVER 2 - VRC1 (Red)	1				UR FOR VRC1
3	90480-13398	GROMMET	2				
4	90480-01559	GROMMET	2				
5	90160-05812	SCREW, ROUND TAPPING	8				
6	90202-05180	WASHER, PLATE	8				
7	90183-05807	NUT, SPRING	8				
8	45S-F411G-00	HOOK, SIDE COVER 1	1				
9	45S-F411H-00	HOOK, SIDE COVER 2	1				
10	45S-F411J-00	DAMPER, SIDE COVER	2				
11	95817-06012	BOLT, FLANGE	2				
12	2GS-F4124-00	AIR SHROUD	1				
13	90387-06048	COLLAR	2				
14	95827-06014	BOLT, FLANGE	2				
15	2GS-XF13F-00-33	GUIDE, AIR 1 -YB (Black)	1				UR FOR YB
	2GS-XF13F-00-P0	GUIDE, AIR 1 - VRC1 (Red)	1				UR FOR VRC1
16	5YY-F413B-00	.EMBLEM	1				
17	2GS-XF13J-00-33	GUIDE, AIR 2 -YB (Black)	1				UR FOR YB
	2GS-XF13J-00-P0	GUIDE, AIR 2 - VRC1 (Red)	1				UR FOR VRC1
18	5YY-F413B-00	.EMBLEM	1				
19	97702-50012	SCREW, TAPPING	6				
20	90183-05807	NUT, SPRING	6				



2GS1470-P220

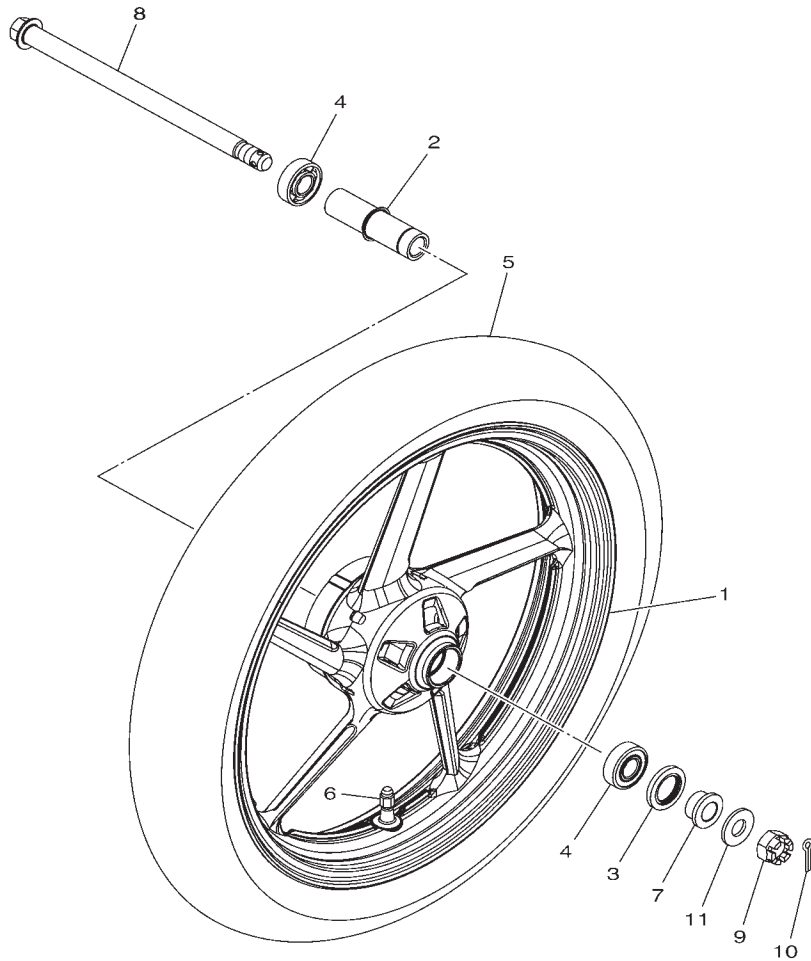
FIG. 23 (4U0) SEAT



2GS1470-P230

REF. NO.	PART NO.	PART NAME	2GS1				REMARKS
1	2GS-F4710-00	SINGLE SEAT ASSY	1				
2	1PM-F4741-00	.PAD, SEAT	4				
3	95022-08012	BOLT, FLANGE	2				
4	2GS-F4750-00	TANDEM SEAT ASSY	1				
5	1PM-F4741-00	.PAD, SEAT	2				
6	4LS-F4741-00	.PAD, SEAT	2				
7	21C-F4780-01	SEAT LOCK ASSY	1				
8	95022-06010	BOLT, FLANGE	2				
9	2GS-F478E-00	CABLE, SEAT LOCK	1				
10	21C-WF479-00	ROTOR SUBASSY WITH KEY	1				
11	2GS-F117K-00	STAY, LOCK	1				
12	90159-06054	SCREW, WITH WASHER	1				
13	2GS-F474A-00	ASSIST, GRIP	1				
14	2GS-F474W-00	ASSIST, GRIP 2	1				
15	95817-08025	BOLT, FLANGE	4				
16	92902-08200	WASHER	4				

FIG. 24 (4W0) FRONT WHEEL



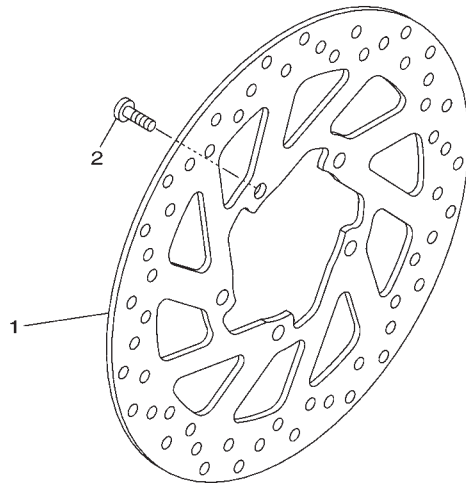
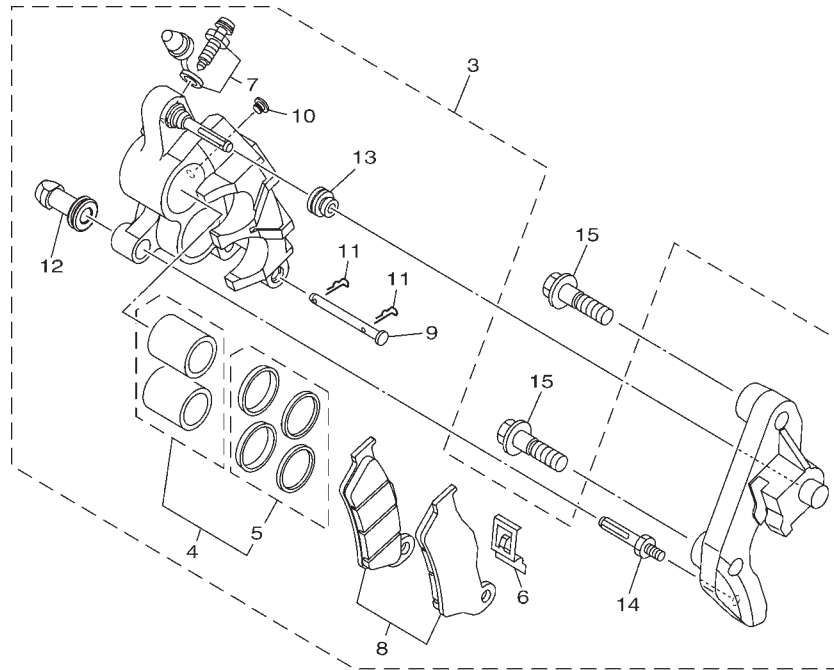
REF. NO.	PART NO.	PART NAME	2GS1				REMARKS
1	21C-F5168-20-33	CAST WHEEL, FRONT- YB (Black)	1				FOR YB,VRC1
2	21C-F510C-10	COLLAR ASSY.	1				
3	93106-22808	OIL SEAL	1				
4	93306-252XG	BEARING	2				UR
	93306-252YH	BEARING	2				UR
5	94110-17818	TIRE (100/80-17 MC 52P)	1				MRF
6	93900-00824	VALVE, RIM	1				
7	21C-F5183-01	COLLAR, WHEEL	1				
8	2GS-F5181-00	AXLE, WHEEL	1				
9	90171-14800	NUT, CASTLE	1				
10	90252-55800	PIN, COTTER	1				
11	92907-14200	WASHER	1				



2GS1470-P240

S=1/5

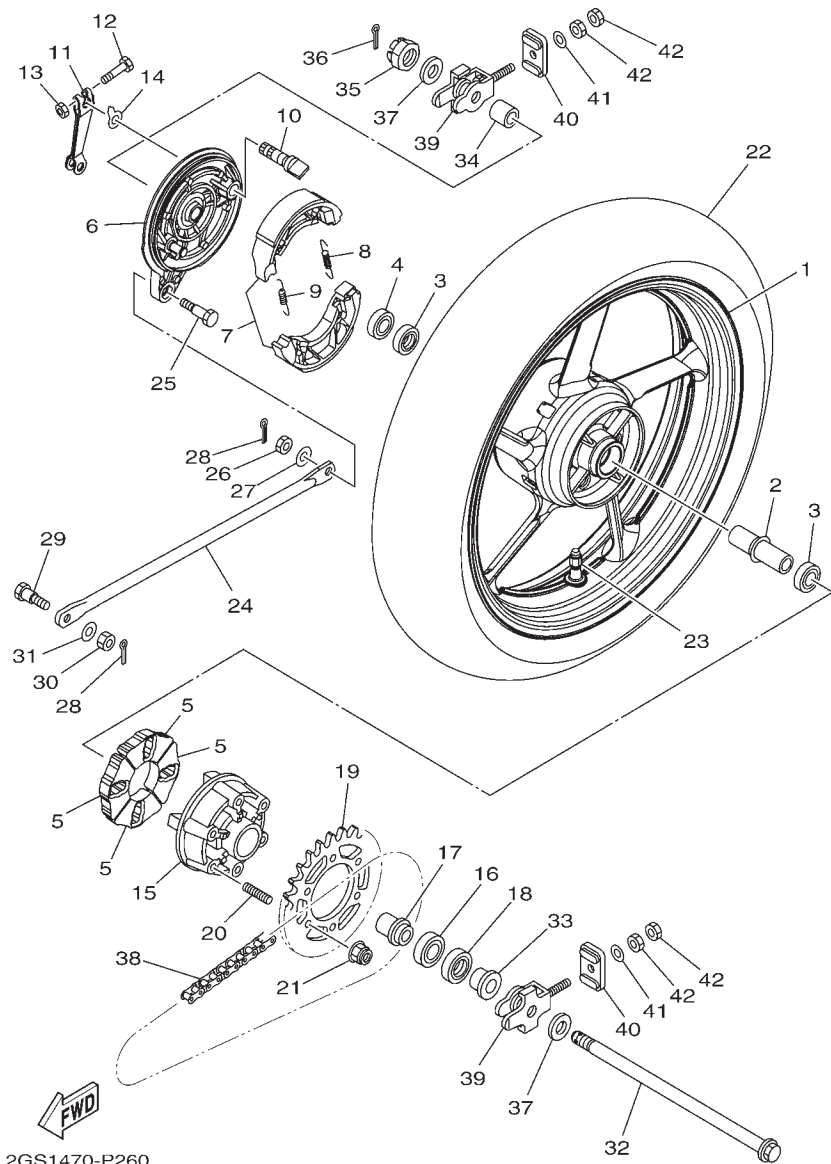
FIG. 25 (4X0) FRONT BRAKE CALIPER



2GS1470-P250

REF. NO.	PART NO.	PART NAME	2GS1				REMARKS
1	21C-F582U-00	DISK, BRAKE (RIGHT)	1				
2	90111-08029	BOLT,HEX. SOCKET BUTTON	5				
3	2GS-F580U-00	CALIPER ASSY (RIGHT)	1				
4	54B-W0057-00	.PISTONASSY, CALIPER	1				
5	54B-W0047-00	.CALIPER SEAL KIT	1				
6	54B-F5919-00	.SUPPORT, PAD	1				
7	54B-W0048-00	.BLEED SCREW KIT	1				
8	2GS-W0045-00	.BRAKE PAD KIT	1				
9	54B-F5924-00	.PIN, PAD	1				
10	54B-F5916-00	.PLUG	1				
11	54B-F5925-00	.CLIP	2				
12	54B-F5937-00	.BOOT 2	1				
13	54B-F5917-00	.BOOT, CALIPER	1				
14	54B-F5926-00	.BOLT	1				
15	90105-10319	BOLT, FLANGE	2				

FIG. 26 (4Y0) REAR WHEEL

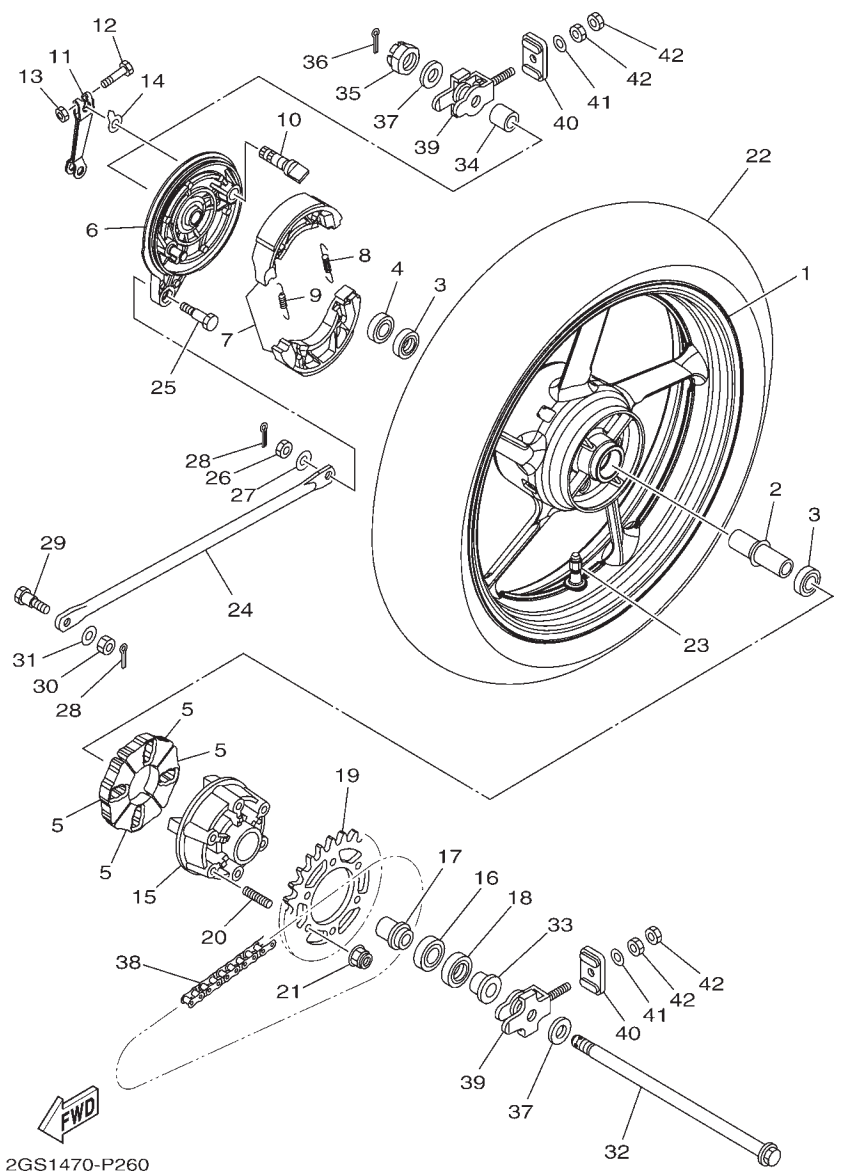


2GS1470-P260

REF. NO.	PART NO.	PART NAME	2GS1			REMARKS
1	21C-F5338-20-33	CAST WHEEL, REAR - YB (Black)	1			FOR YB,VRC1
2	21C-F530S-10	COLLAR ASSY	1			
3	93306-252XG	BEARING	2			UR
	93306-252YH	BEARING	2			UR
4	93106-22808	OIL SEAL	1			
5	21C-F5364-00	DAMPER	4			
6	5US-F5321-10	PLATE, BRAKE SHOE	1			
7	1GC-F530K-00	BRAKE SHOE KIT	1			
8	90506-12001	SPRING, TENSION	1			
9	90506-15001	SPRING, TENSION	1			
10	5YY-F5351-00	CAMSHAFT	1			
11	21C-F5355-01	LEVER, CAMSHAFT	1			
12	90101-06046	BOLT	1			
13	9530N-06600	NUT	1			
14	36L-F533A-00	PLATE, INDICATOR	1			
15	20P-F5366-00-33	CLUTCH, HUB - YB (Black)	1			FOR YB,VRC1
16	93306-054YA	BEARING	1			UR
	93306-054Y5	BEARING	1			UR
17	20P-F5377-00	COLLAR, WHEEL	1			
18	93106-26801	OIL SEAL	1			
19	2GS-F5441-00	SPROCKET, DRIVEN (41T)	1			
20	90116-08826	BOLT, STUD	6			
21	95602-08200	NUT, SELF-LOCKING	6			
22	94114-17801	TIRE (140/60 R17 MC 63P)	1			MRF
23	93900-00824	VALVE, RIM	1			
24	21C-F5371-00	BAR, TENSION	1			
25	90109-08063	BOLT	1			
26	95302-08700	NUT	1			
27	90201-08326	WASHER, PLATE	1			
28	91401-20012	PIN, COTTER	2			
29	90109-08831	BOLT	1			
29						

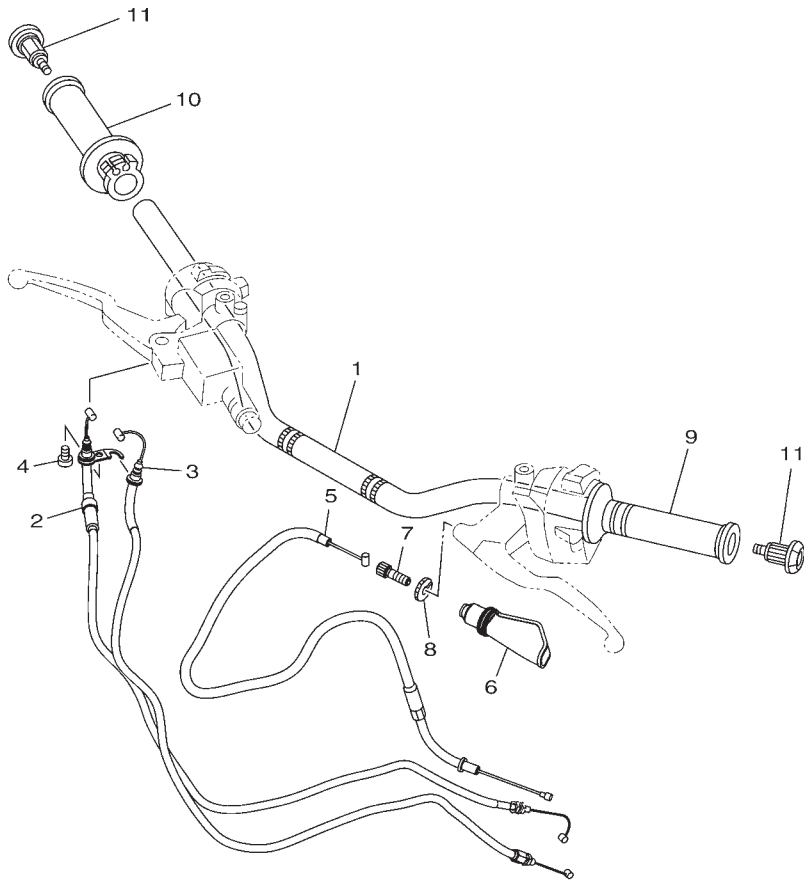
FIG. 26 (4Y0) REAR WHEEL

REF. NO.	PART NO.	PART NAME	2GS1				REMARKS
30	95333-08600	NUT	1				
31	92902-08200	WASHER	1				
32	2GS-F5381-00	AXLE, WHEEL	1				
33	21C-F5377-01	COLLAR, WHEEL	1				
34	21C-F5383-10	COLLAR, WHEEL	1				
35	90171-14800	NUT, CASTLE	1				
36	90252-55800	PIN, COTTER	1				
37	90201-15814	WASHER, PLATE	2				
38	94568-B5128	CHAIN (R428HBSX-128-2)	1				
39	21C-F5388-11	PULLER, CHAIN 1	2				
40	21C-F2174-00	END 1	2				
41	92902-08600	WASHER, PLATE	2				
42	95333-08600	NUT	4				



2GS1470-P260

FIG. 27 (5B0) STEERING HANDLE & CABLE

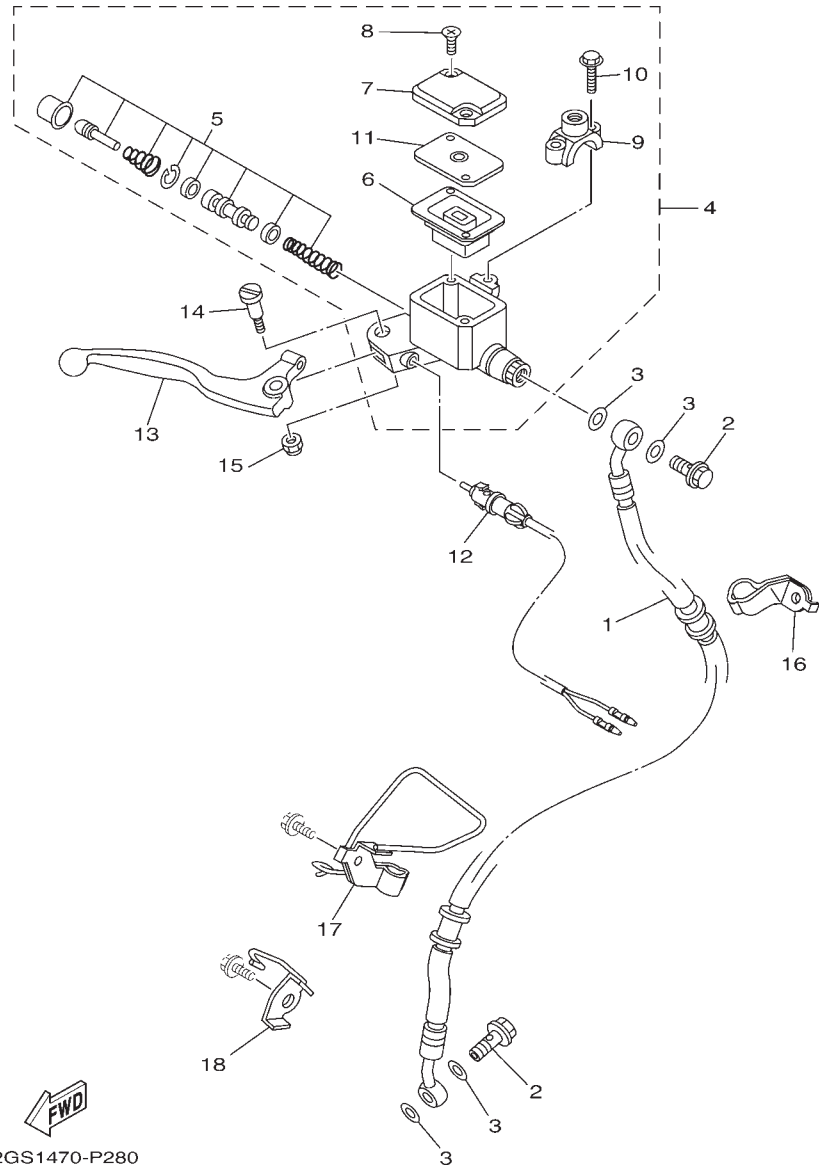


REF. NO.	PART NO.	PART NAME	2GS1				REMARKS
1	21C-F6111-01	HANDLEBAR	1				
2	2GS-F6311-00	CABLE, THROTTLE 1	1				
3	2GS-F6312-00	CABLE, THROTTLE 2	1				
4	98517-05012	SCREW, PAN HEAD	1				
5	21C-F6335-01	CABLE, CLUTCH	1				
6	5TS-F6372-00	COVER, HANDLE LEVER 1	1				
7	90123-08046	BOLT	1				
8	90179-08148	NUT	1				
9	21C-F6241-00	GRIP	1				
10	21C-F6240-10	GRIP ASSY	1				
11	21C-F620B-21	END GRIP ASSY	2				



2GS1470-P270

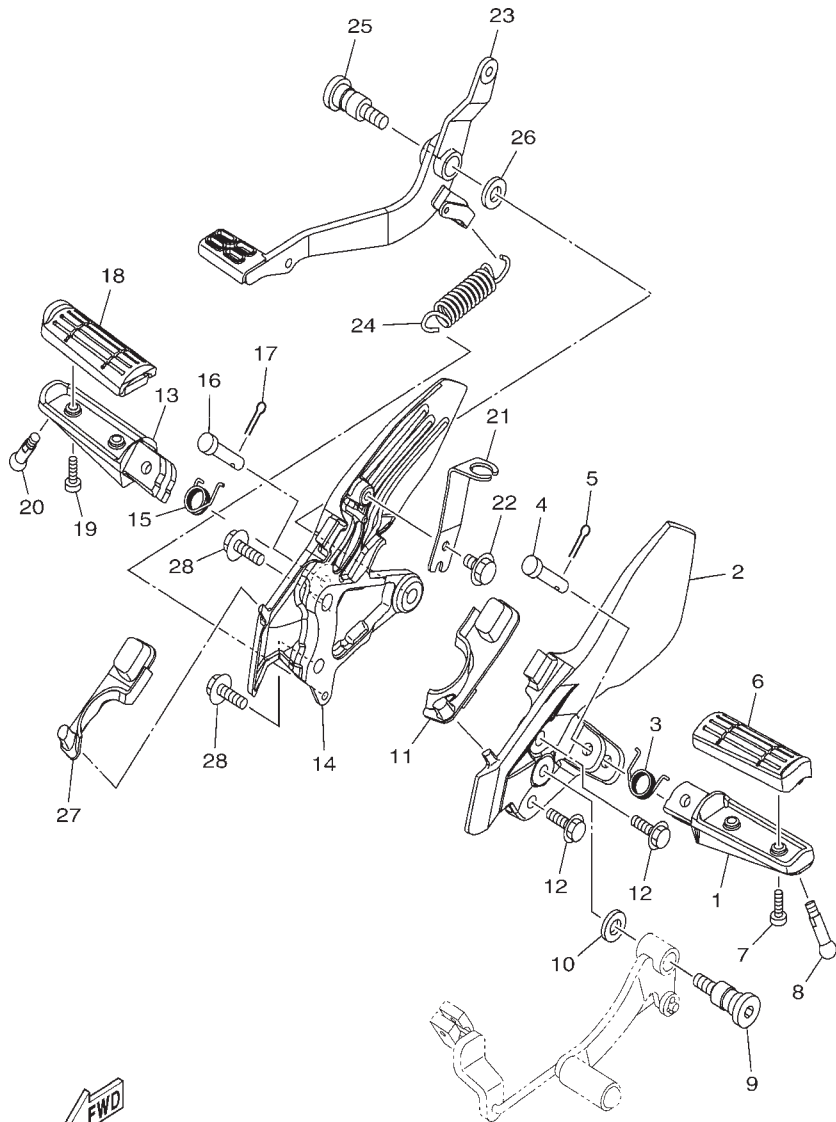
FIG. 28 (5C0) FRONT MASTER CYLINDER



2GS1470-P280

REF. NO.	PART NO.	PART NAME	2GS1				REMARKS
1	21C-F5872-00	HOSE, BRAKE 1	1				
2	90401-10818	BOLT, UNION	2				
3	90201-10815	WASHER, PLATE	4				
4	54B-WF587-00	MASTER CYLINDER SUB ASSY	1				
5	54B-W0041-00	.CYLINDER KIT, MASTER	1				
6	54B-F5854-00	.DIAPHRAGM, RESERVOIR	1				
7	54B-F5852-00	.CAP, RESERVOIR	1				
8	54B-F589H-00	.SCREW	2				
9	5YY-F5867-00	.BRACKET, MASTER CYLINDER	1				
10	90105-06859	.BOLT, FLANGE	2				
11	54B-F5855-00	.BUSH,DIAPHRAGM	1				
12	54B-H3980-01	FRONT STOP SWITCH ASSY	1				
13	54B-H3922-00	LEVER 2	1				
14	90109-06859	BOLT	1				
15	54B-F6338-00	NUT, ADJUSTING	1				
16	21C-F5875-00	HOLDER, BRAKE HOSE 1	1				
17	21C-F5876-00	HOLDER, BRAKE HOSE 2	1				
18	21C-F3317-00	HOLDER, CABLE	1				

FIG. 29 (5F0) STAND & FOOTREST

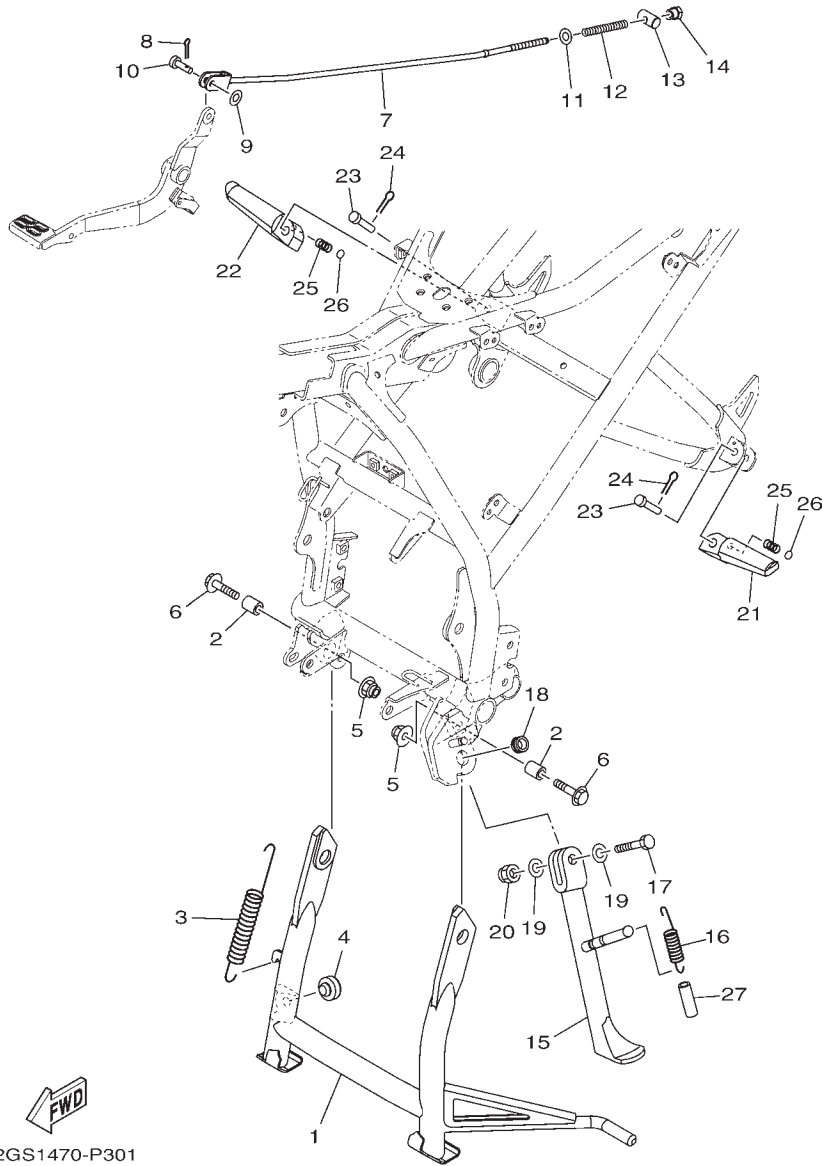


REF. NO.	PART NO.	PART NAME	2GS1				REMARKS
1	35B-F7451-00	FOOTREST	1				
2	2GS-F7452-00	BRACKET, FOOTREST 1	1				
3	90508-183B9	SPRING, TORSION	1				
4	91701-08040	PIN	1				
5	91401-25015	PIN, COTTER	1				
6	21C-F7413-01	COVER, FOOTREST	1				
7	98502-05014	SCREW, PAN HEAD	2				
8	90109-08202	BOLT	1				
9	21C-F7261-00	SHAFT	1				
10	90201-10841	WASHER, PLATE	1				
11	2GS-F7414-00	DAMPER, FOOTREST	1				
12	95817-08025	BOLT, FLANGE	2				
13	35B-F7461-00	FOOTREST	1				
14	2GS-F7462-00	BRACKET, FOOTREST 2	1				
15	90508-183B9	SPRING, TORSION	1				
16	91701-08040	PIN	1				
17	91401-25015	PIN, COTTER	1				
18	21C-F7413-01	COVER, FOOTREST	1				
19	98502-05014	SCREW, PAN HEAD	2				
20	90109-08202	BOLT	1				
21	2GS-F144G-00	STAY, STOP SWITCH	1				
22	95802-06010	BOLT, FLANGE	1				
23	21C-F7211-10	PEDAL, BRAKE	1				
24	90506-26807	SPRING, TENSION	1				
25	21C-F7261-00	SHAFT	1				
26	90201-10841	WASHER, PLATE	1				
27	2GS-F7424-00	DAMPER, FOOTREST 2	1				
28	95817-08025	BOLT, FLANGE	2				



2GS1470-P290

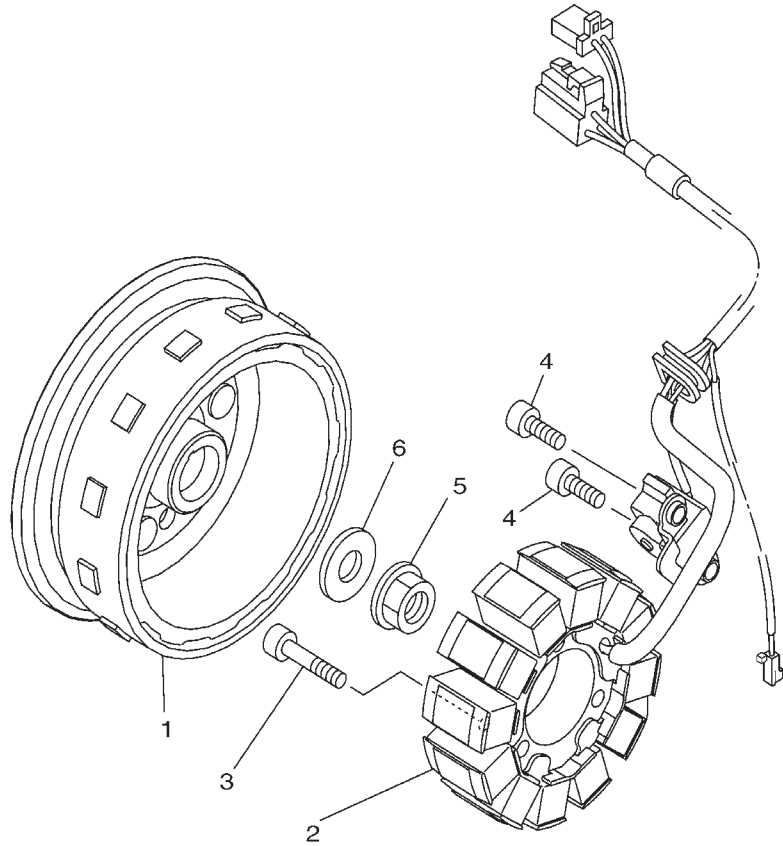
FIG. 30 (5F1) STAND & FOOTREST 2



REF. NO.	PART NO.	PART NAME	2GS1				REMARKS
1	45S-F7111-00	STAND, MAIN	1				
2	90387-10822	COLLAR	2				
3	90506-35816	SPRING, TENSION	1				
4	21C-F7114-00	STOPPER, MAIN STAND	1				
5	95602-10200	NUT, U FLANGE	2				
6	95812-10035	BOLT, FLANGE	2				
7	21C-F7231-00	ROD, BRAKE	1				
8	91401-20012	PIN, COTTER	1				
9	92902-06200	WASHER	1				
10	90240-06804	PIN, CLEVIS	1				
11	92902-06200	WASHER	1				
12	90501-10815	SPRING, COMPRESSION	1				
13	90249-12008	PIN	1				
14	90179-06835	NUT	1				
15	21C-F7311-00	STAND, SIDE	1				
16	90506-23807	SPRING, TENSION	1				
17	90101-10812	BOLT	1				
18	90387-10003	COLLAR	1				
19	90201-10841	WASHER, PLATE	2				
20	90185-10811	NUT, SELF-LOCKING	1				
21	20P-F7431-00	FOOTREST, REAR 1	1				
22	20P-F7441-00	FOOTREST, REAR 2	1				
23	91701-08035	PIN	2				
24	91401-25015	PIN, COTTER	2				
25	90501-12743	SPRING, COMPRESSION	2				
26	93501-04805	BALL	2				
27	90445-13806	HOSE	1				

2GS1470-P301

FIG. 31 (8A0) GENERATOR

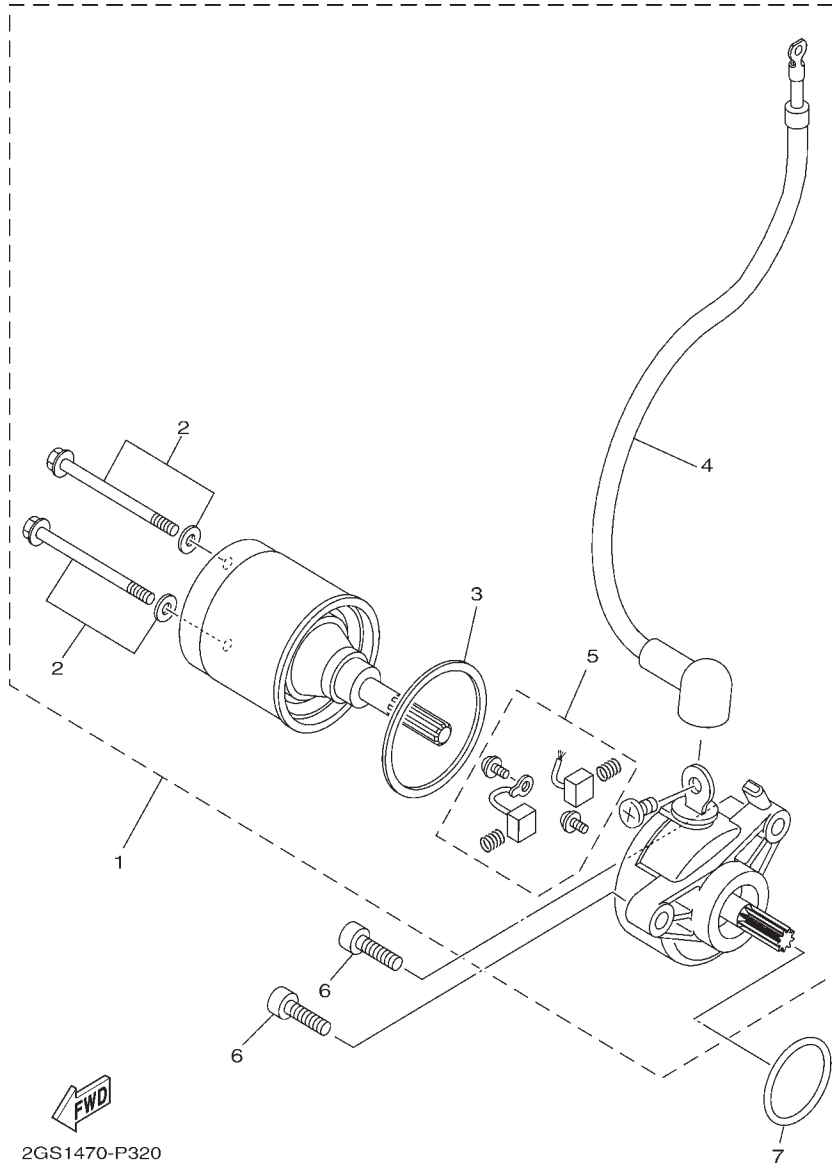


REF. NO.	PART NO.	PART NAME	2GS1				REMARKS
1	2GS-H1450-00	ROTOR ASSY	1				
2	2GS-H1410-00	STATOR ASSY	1				
3	91317-06030	BOLT	3				
4	91317-06016	BOLT	2				
5	95707-12500	NUT, FLANGE	1				
6	90201-12019	WASHER, PLATE	1				



2GS1470-P310

FIG. 32 (8C0) STARTING MOTOR

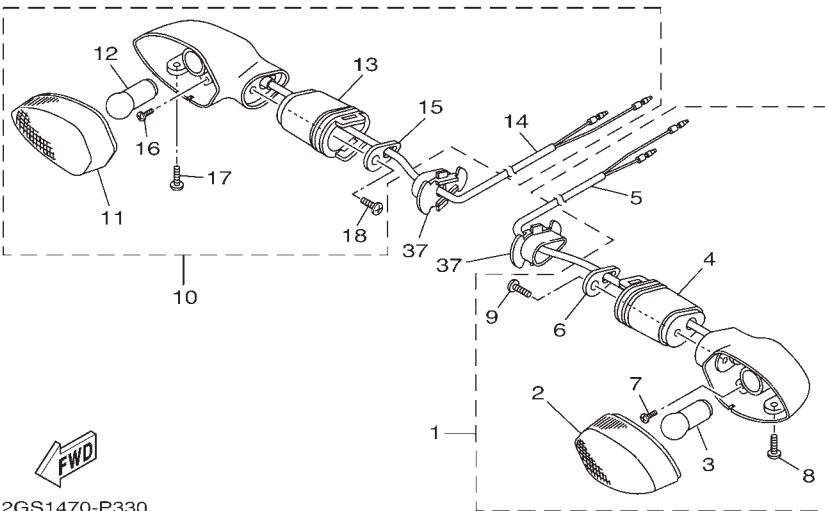
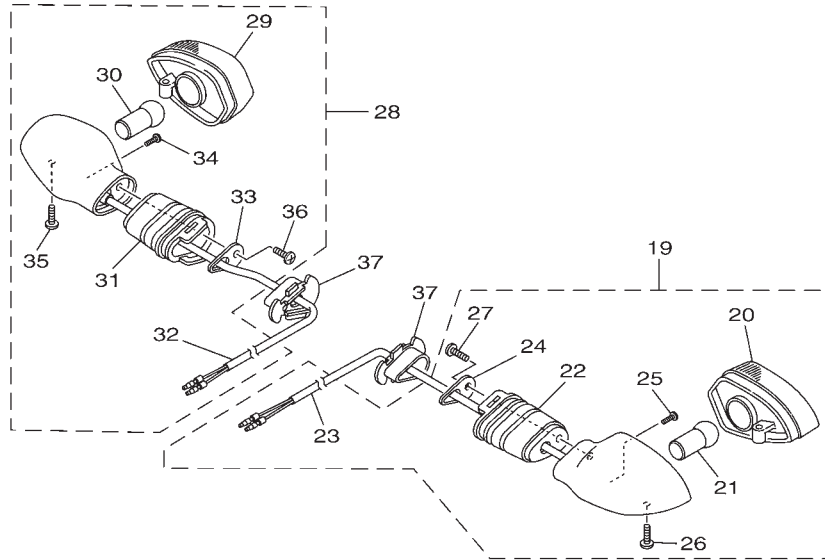


REF. NO.	PART NO.	PART NAME	2GS1				REMARKS
1	2GS-H1800-00	STARTING MOTOR ASSY	1				
2	5D9-H1828-00	.SCREW 2	1				
3	5D9-H1861-00	.GASKET	1				
4	2GS-H183G-00	.CORD COMP.	1				
5	5TP-H1801-00	.BRUSH SET	1				
6	91314-06020	BOLT	2				
7	93210-29807	O-RING	1				

2GS1470-P320

FIG. 33 (8F0) FLASHER LIGHT

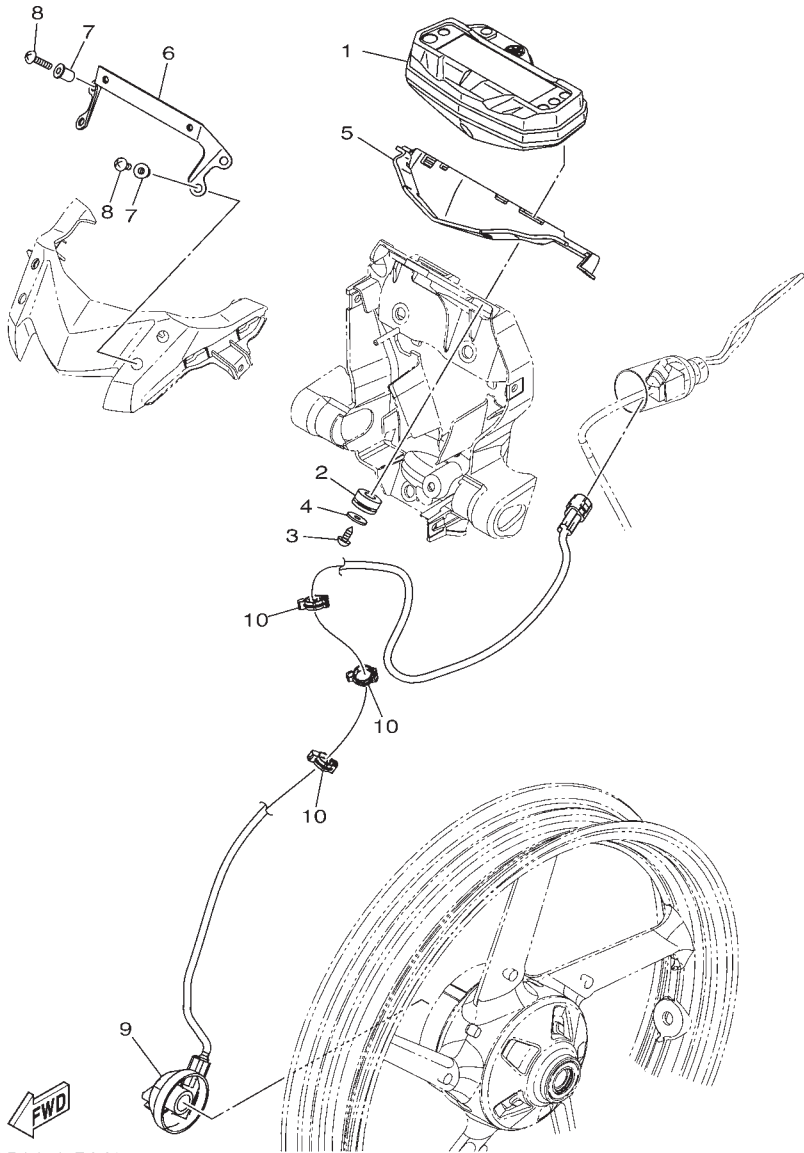
REF. NO.	PART NO.	PART NAME	2GS1				REMARKS
1	2GS-H3310-00	FRONT FLASHER LIGHT ASSY 1	1				
2	54B-H331A-00	.LENS COMP 1	1				
3	1GC-H3311-00	.BULB (12V-10W)	1				
4	20P-H3318-00	.STAY, FLASHER 1	1				
5	54B-H331E-10	.CORD ASSY	1				
6	20P-H3618-00	.PLATE	1				
7	20P-H213A-00	.SCREW, FITTING	1				
8	20P-H3333-00	.SCREW, LENS FITTING	1				
9	20P-H2133-00	.SCREW, FITTING	1				
10	2GS-H3320-00	FRONT FLASHER LIGHT ASSY 2	1				
11	54B-H332A-00	.LENS COMP 2	1				
12	1GC-H3311-00	.BULB (12V-10W)	1				
13	20P-H3318-00	.STAY, FLASHER 1	1				
14	54B-H332E-10	.CORD ASSY	1				
15	20P-H3618-00	.PLATE	1				
16	20P-H213A-00	.SCREW, FITTING	1				
17	20P-H3333-00	.SCREW, LENS FITTING	1				
18	20P-H2133-00	.SCREW, FITTING	1				
19	2GS-H3330-00	REAR FLASHER LIGHT ASSY 1	1				
20	54B-H333A-00	.LENS COMP 1	1				
21	1GC-H3311-00	.BULB (12V-10W)	1				
22	20P-H3318-10	.STAY, FLASHER 1	1				
23	2GS-H333E-00	.CORD ASSY	1				
24	20P-H3618-00	.PLATE	1				
25	20P-H213A-00	.SCREW, FITTING	1				
26	20P-H3333-00	.SCREW, LENS FITTING	1				
27	20P-H2133-00	.SCREW, FITTING	1				
28	2GS-H3340-00	REAR FLASHER LIGHT ASSY 2	1				
29	54B-H334A-00	.LENS COMP 2	1				
30	1GC-H3311-00	.BULB (12V-10W)	1				
31	20P-H3318-10	.STAY, FLASHER 1	1				
32	2GS-H334E-00	.CORD ASSY	1				
33	20P-H3618-00	.PLATE	1				
34	20P-H213A-00	.SCREW, FITTING	1				
35	20P-H3333-00	.SCREW, LENS FITTING	1				
36	20P-H2133-00	.SCREW, FITTING	1				
37	5YY-H3318-10	STAY, FLASHER 1	4				



2GS1470-P330

FIG. 34 (8G0) METER

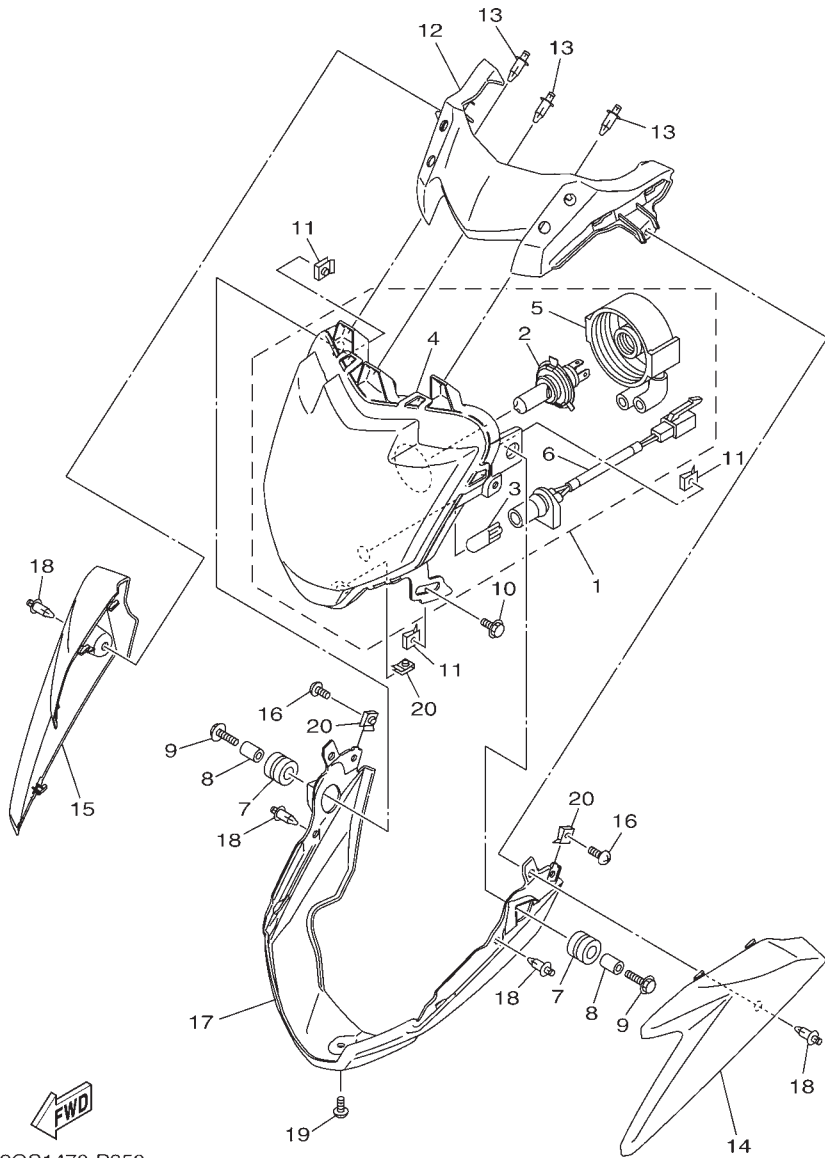
REF. NO.	PART NO.	PART NAME	2GS1				REMARKS
1	2GS-H3500-00	METER ASSY	1				
2	90480-14818	GROMMET	3				
3	97707-50014	SCREW, TAPPING	3				
4	90201-05036	WASHER, PLATE	3				
5	2GS-H3615-00	BLIND, METER	1				
6	2GS-F3487-00	STAY, PLATE	1				
7	90179-05804	NUT	4				
8	98902-05020	SCREW, BIND	4				
9	21C-H3756-03	SENSOR, UNIT	1				
10	90464-14803	CLAMP	3				



2GS1470-P340

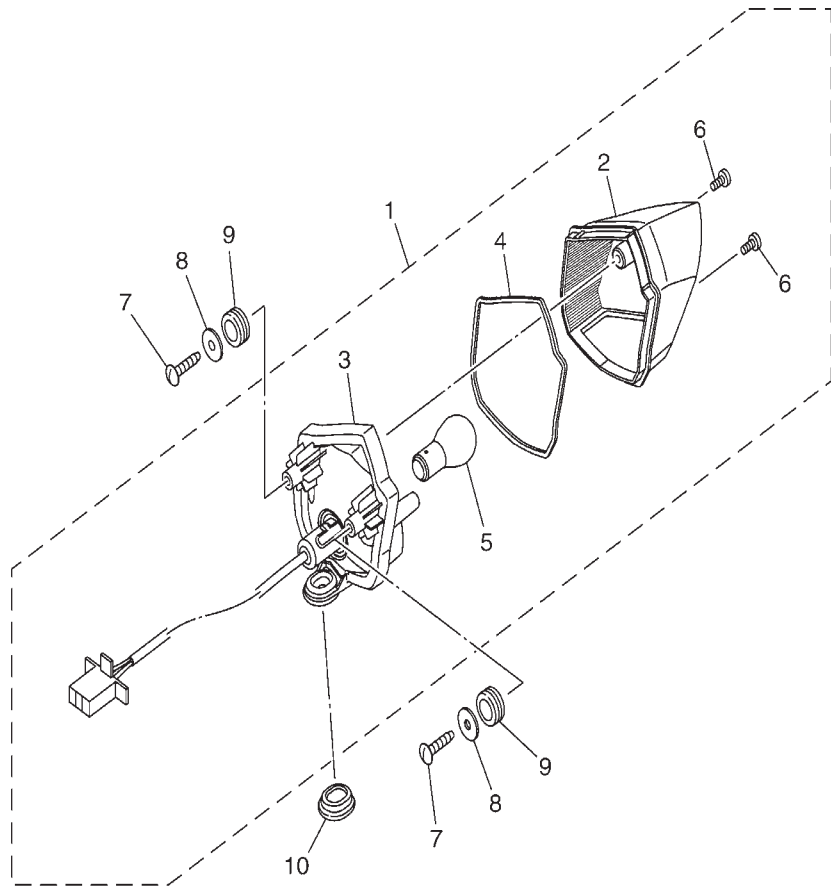
FIG. 35 (8H0) HEADLIGHT

REF. NO.	PART NO.	PART NAME	2GS1				REMARKS
1	2GS-H4300-00	HEADLIGHT ASSY	1				
2	20P-H4314-10	.BULB (12V-35/35W)	1				
3	21C-H4347-00	.BULB (12V-5W)	1				
4	2GS-H430A-00	.HEADLIGHT UNIT ASSY	1				
5	21C-H4502-00	.COVER COMP.	1				
6	21C-H4312-00	.CORD ASSY	1				
7	90480-14101	GROMMET	2				
8	90387-068D4	COLLAR	2				
9	95802-06025	BOLT, FLANGE	2				
10	95812-06012	BOLT, FLANGE	1				
11	90183-06069	NUT, SPRING	3				
12	2GS-F3121-00	COVER, UPPER 1	1				
13	90269-06814	RIVET	3				
14	2GS-F3122-00-33	COVER, OUTER 1 - YB (Black)	1				FOR YB
	2GS-F3122-00-P0	COVER, OUTER 1 - VRC1 (Red)	1				FOR VRC1
15	2GS-F3132-00-33	COVER, OUTER 2 - YB (Black)	1				FOR YB
	2GS-F3132-00-P0	COVER, OUTER 2 - VRC1 (Red)	1				FOR VRC1
16	90160-05812	SCREW, ROUND TAPPING	2				
17	2GS-F3123-00-P0	COVER, UNDER 1 - MBL2 (Mat black)	1				FOR VRC1, YB
18	90269-06814	RIVET	4				
19	97702-50012	SCREW, TAPPING	1				
20	90183-05807	NUT, SPRING	3				



2GS1470-P350

FIG. 36 (8J0) TAILLIGHT



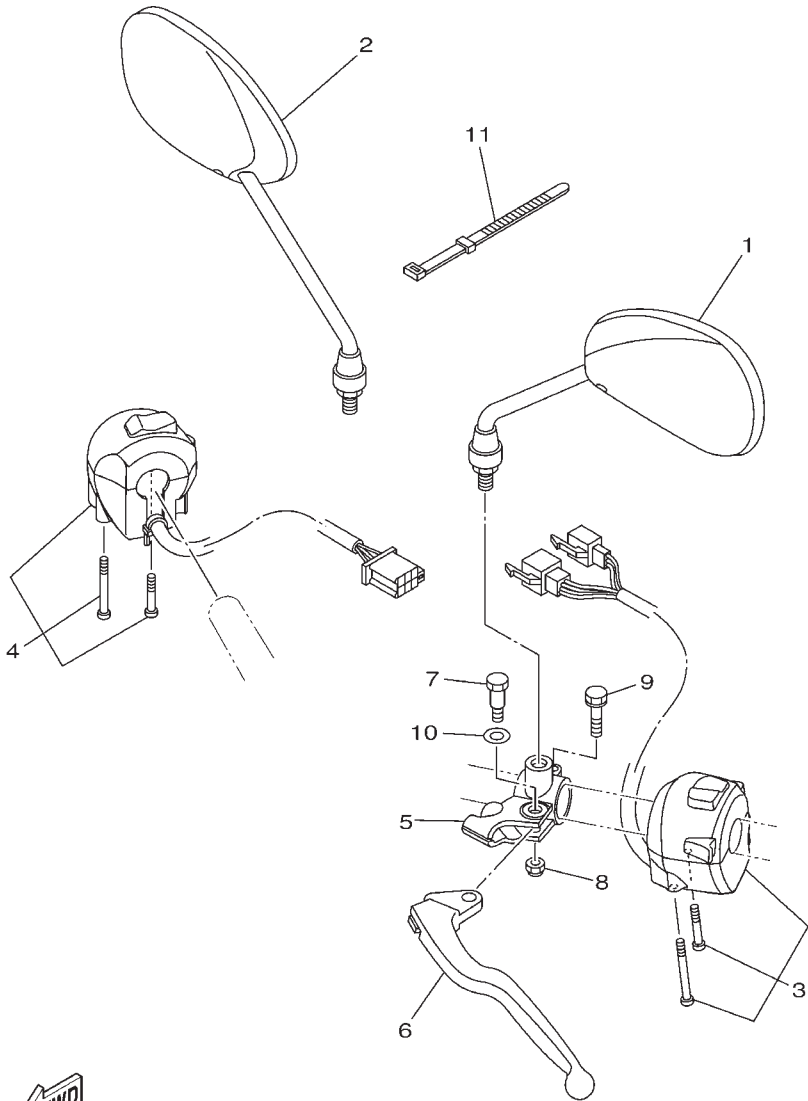
REF. NO.	PART NO.	PART NAME	2GS1				REMARKS
1	2GS-H4710-00	TAILLIGHT UNIT ASSY	1				
2	2GS-H4721-00	.LENS, TAILLIGHT	1				
3	2GS-H4720-00	.BASE ASSY	1				
4	2GS-H4723-00	.GASKET, TAIL LENS	1				
5	54B-H4714-00	.BULB (12V-21/5W)	1				
6	97702-40512	.SCREW, TAPPING	2				
7	97702-50016	SCREW, TAPPING	2				
8	90201-05036	WASHER, PLATE	2				
9	90480-14819	GROMMET	2				
10	90480-01558	GROMMET	1				



2GS1470-P360

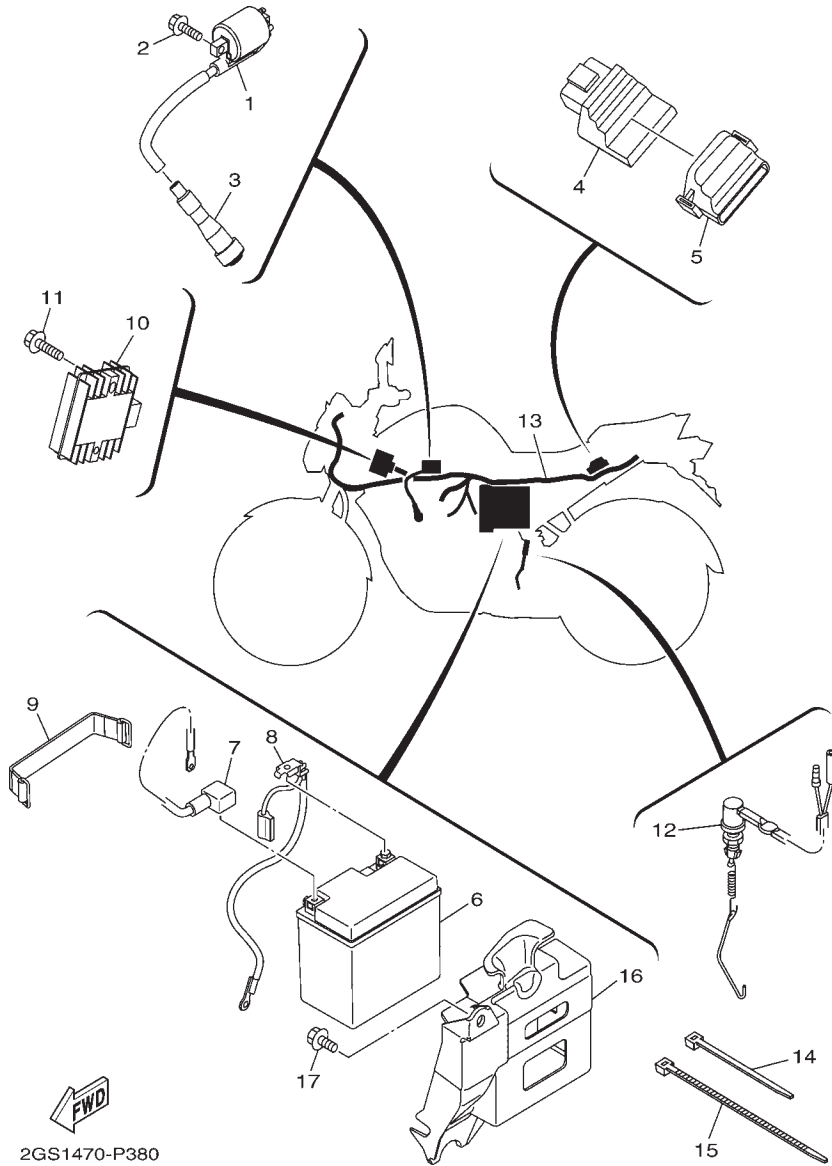
FIG. 37 (8T0) HANDLE SWITCH & LEVER

REF. NO.	PART NO.	PART NAME	2GS1					REMARKS
1	2GS-F6280-00	REAR VIEW MIRROR ASSY (LEFT)	1					
2	2GS-F6290-00	REAR VIEW MIRROR ASSY (RIGHT)	1					
3	2GS-H3972-00	SWITCH, HANDLE 4	1					
4	2GS-H3963-00	SWITCH, HANDLE 3	1					
5	5YY-H2911-00	HOLDER, LEVER 1	1					
6	54B-H3912-00	LEVER 1	1					
7	36L-H3945-10	BOLT, LEVER	1					
8	9570N-06300	NUT, NYLON	1					
9	97507-06425	BOLT, WITH WASHER	1					
10	90201-08834	WASHER, PLATE	1					
11	36L-H3936-00	BAND, SWITCH CORD	2					



2GS1470-P370

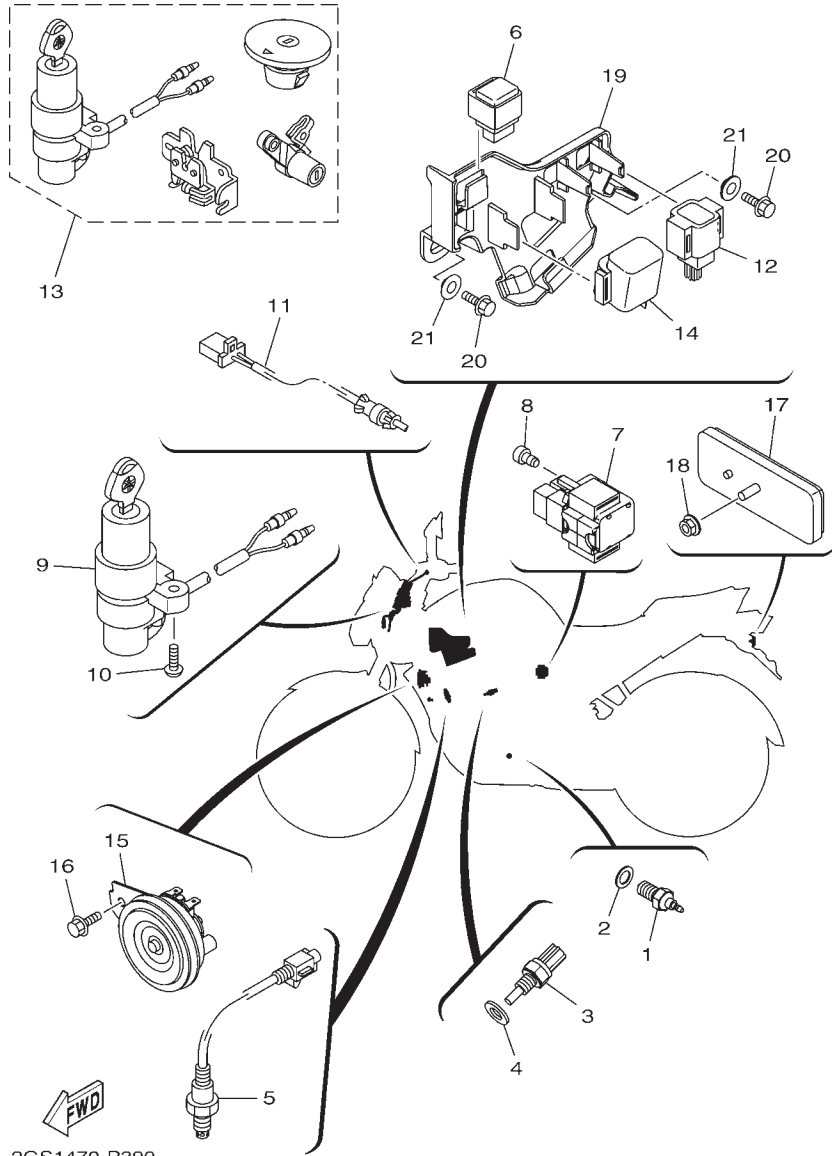
FIG. 38 (8V0) ELECTRICAL 1



REF. NO.	PART NO.	PART NAME	2GS1				REMARKS
1	2GS-H2310-00	IGNITION COIL ASSY	1				
2	97502-05520	BOLT, WITH WASHER	2				
3	20P-H2370-02	PLUG CAP ASSY	1				
4	2GS-H591A-00	ENGINE CONTROL UNIT ASSY	1				
5	2GS-H5546-00	BAND	1				
6	1CK-H2100-00	BATTERY (EXIDE ETZ-5 MC VRLA)	1				
7	2GS-H2115-00	WIRE, PLUS LEAD	1				
8	2GS-H2116-00	WIRE, MINUS LEAD	1				
9	5YY-H2131-10	BAND, BATTERY	1				
10	2GS-H1960-00	RECTIFIER & REGULATOR ASSY	1				
11	95802-06025	BOLT, FLANGE	2				
12	21C-H2530-00	STOP SWITCH ASSY	1				
13	2GS-H2590-00	WIRE HARNESS ASSY	1				
14	90464-16061	CLAMP	4				
15	90464-50800	CLAMP	1				
16	2GS-F177G-00	BOX, BATTERY	1				
17	90119-06137	BOLT, WITH WASHER	2				

2GS1470-P380

FIG. 39 (8W0) ELECTRICAL 2



REF. NO.	PART NO.	PART NAME	2GS1				REMARKS
1	21C-H2540-00	NEUTRAL SWITCH ASSY	1				
2	90430-10148	GASKET	1				
3	52B-H3591-00	THERMOUNIT	1				
4	90201-10128	WASHER, PLATE	1				
5	2GS-H592A-00	SENSOR, OXYGEN	1				
6	5YY-H1950-10	RELAY ASSY	1				
7	54B-H1940-01	STARTER RELAY ASSY	1				
8	91312-05008	BOLT	2				
9	2GS-H2501-00	MAIN SWITCH STEERING LOCK	1				
10	90149-06118	SCREW	2				
11	21C-H2917-01	SWITCH	1				
12	1PA-H2576-00	SENSOR, LEAN ANGLE	1				
13	2GS-XH250-00	MAIN SW. STRG. LOCK SUB ASSY	1				AP
14	21C-H3350-00	FLASHER RELAY ASSY	1				
15	2GS-H3371-00	HORN	1				
16	95827-06014	BOLT, FLANGE	2				
17	5US-H5110-00	REFLECTOR ASSY	1				
18	95702-05500	NUT, FLANGE	1				
19	2GS-F418E-00	BOX 1	1				
20	95807-06014	BOLT, FLANGE	2				
21	90387-068S1	COLLAR	2				

2GS1

PART NO	REF. NO.	PART NO	REF. NO.	PART NO	REF. NO.	PART NO	REF. NO.	PART NO	REF. NO.	PART NO	REF. NO.
1CK-H2100-00	38-6	20P-H3618-00	33-33	21C-E8511-00	13-2	21C-F3441-00	19-14	21C-WF479-00	23-10	2GS-E4452-00	6-16
1GC-F530K-00	26-7	20P-H4314-10	35-2	21C-E8512-00	13-3	21C-F4181-00	21-2	2GS-12159-00	3-10	2GS-E4453-00	6-15
1GC-H3311-00	33-3	21C-E1169-10	1-7	21C-E8513-00	13-4	21C-F4183-00	21-4	2GS-E1102-00	1-1	2GS-E4703-00	7-1
1GC-H3311-00	33-12	21C-E1351-00	1-21	21C-E8531-00	13-5	21C-F4188-10	21-14	2GS-E111F-00	4-4	2GS-E4718-00	7-2
1GC-H3311-00	33-21	21C-E1496-20	2-16	21C-E8535-00	13-6	21C-F4614-00-P0	21-19	2GS-E1165-00	1-6	2GS-E4799-00	7-3
1GC-H3311-00	33-30	21C-E1633-00	2-9	21C-F1511-00-33	16-1	21C-F4780-01	23-7	2GS-E1166-00	6-26	2GS-E4877-00	6-17
1PA-H2576-00	39-12	21C-E1681-01	2-2	21C-F1511-00-P2	16-1	21C-F510C-10	24-2	2GS-E1181-01	1-17	2GS-E5411-00	9-3
1PM-E2288-00	4-6	21C-E2156-00	3-12	21C-F1638-02	15-13	21C-F5168-20-33	24-1	2GS-E1186-00	1-11	2GS-E5418-00	9-13
1PM-E5514-00	10-1	21C-E2210-02	4-13	21C-F1717-00	17-9	21C-F5183-01	24-7	2GS-E1190-00	1-5	2GS-E5580-00	10-8
1PM-E5524-10	10-5	21C-E2231-00	4-9	21C-F2147-00	18-20	21C-F530S-10	26-2	2GS-E1193-00	1-9	2GS-E6111-00	11-1
1PM-E6345-00	11-23	21C-E2435-11	1-12	21C-F2174-00	26-40	21C-F5338-20-33	26-1	2GS-E1310-00	1-20	2GS-E6150-00	11-6
1PM-F4741-00	23-2	21C-E2437-00	4-16	21C-F3110-00	20-18	21C-F5355-01	26-11	2GS-E1361-00	1-15	2GS-E7211-00	12-14
1PM-F4741-00	23-5	21C-E2661-10	1-22	21C-F3110-00	20-35	21C-F5364-00	26-5	2GS-E1400-09	2-1	2GS-E7221-00	12-7
1PM-F811G-00	16-11	21C-E3362-00	2-20	21C-F3111-00	20-5	21C-F5371-00	26-24	2GS-E1422-00	2-5	2GS-E7231-00	12-10
1ST-E2151-00	3-9	21C-E3440-00	5-6	21C-F3111-00	20-22	21C-F5377-01	26-33	2GS-E1454-00	2-14	2GS-E7241-00	12-15
20P-E4747-00	7-10	21C-E3447-00	5-7	21C-F3114-00	20-4	21C-F5383-10	26-34	2GS-E1531-00	2-15	2GS-E7251-00	12-16
20P-E4747-00	15-11	21C-E3449-00	5-10	21C-F3114-00	20-21	21C-F5388-11	26-39	2GS-E1536-00	2-12	2GS-E7402-00	12-6
20P-E8113-00	14-10	21C-E443E-00	6-19	21C-F3118-00	20-6	21C-F582U-00	25-1	2GS-E1603-00	2-11	2GS-E7410-00	12-1
20P-F2129-00	18-5	21C-E4613-00	7-11	21C-F3118-00	20-23	21C-F5872-00	28-1	2GS-E1605-00	2-11	2GS-E8110-00	14-9
20P-F3418-00	19-8	21C-E4775-00	7-9	21C-F3126-01	20-3	21C-F5875-00	28-16	2GS-E1607-00	2-11	2GS-E8540-00	13-1
20P-F5366-00-33	26-15	21C-E5155-00	8-3	21C-F3136-01	20-20	21C-F5876-00	28-17	2GS-E1631-00	2-8	2GS-F1110-00	15-1
20P-F5377-00	26-17	21C-E5421-00	9-17	21C-F3141-00	20-8	21C-F6111-01	27-1	2GS-E1636-09	2-8	2GS-F117K-00	23-11
20P-F7431-00	30-21	21C-E5441-00	9-1	21C-F3141-00	20-25	21C-F620B-21	27-11	2GS-E1638-09	2-8	2GS-F1279-00	15-14
20P-F7441-00	30-22	21C-E5451-10	9-4	21C-F3146-00	20-15	21C-F6240-10	27-10	2GS-E1651-00	2-4	2GS-F1316-00	15-2
20P-H2133-00	33-9	21C-E5461-10	9-18	21C-F3146-00	20-32	21C-F6241-00	27-9	2GS-E2111-00	3-1	2GS-F1317-00	15-5
20P-H2133-00	33-18	21C-E5521-00	10-2	21C-F3149-00	20-7	21C-F6335-01	27-5	2GS-E2113-00	3-5	2GS-F144G-00	29-21
20P-H2133-00	33-27	21C-E5666-00	12-23	21C-F3149-00	20-24	21C-F7114-00	30-4	2GS-E2121-00	3-2	2GS-F1611-00	16-6
20P-H2133-00	33-36	21C-E6135-10	11-19	21C-F3156-00	20-13	21C-F7211-10	29-23	2GS-E2126-00	3-4	2GS-F1613-00	16-12
20P-H213A-00	33-7	21C-E6154-00	11-7	21C-F3156-00	20-30	21C-F7231-00	30-7	2GS-E2170-00	4-1	2GS-F1614-00	16-13
20P-H213A-00	33-16	21C-E6193-00	11-3	21C-F3158-00	20-10	21C-F7261-00	29-9	2GS-E2213-00	4-14	2GS-F163A-00	16-15
20P-H213A-00	33-25	21C-E6324-00	11-11	21C-F3158-00	20-27	21C-F7261-00	29-25	2GS-E2241-00	4-10	2GS-F1644-00	18-13
20P-H213A-00	33-34	21C-E6331-00	11-10	21C-F3173-00	20-11	21C-F7311-00	30-15	2GS-E2280-00	4-5	2GS-F1645-00	18-14
20P-H2370-02	38-3	21C-E6333-00	11-13	21C-F3173-00	20-28	21C-F7413-01	29-6	2GS-E3557-00	6-6	2GS-F164F-00	18-15
20P-H3318-00	33-4	21C-E6337-00	11-14	21C-F317J-00	19-18	21C-F7413-01	29-18	2GS-E3585-00	6-1	2GS-F1650-00	18-12
20P-H3318-00	33-13	21C-E6356-01	11-16	21C-F3181-10	20-9	21C-F8100-20	16-20	2GS-E3635-00	6-8	2GS-F1651-00	16-14
20P-H3318-10	33-22	21C-E6358-00	11-15	21C-F3181-10	20-26	21C-H2530-00	38-12	2GS-E3645-00	6-3	2GS-F1711-00	17-1
20P-H3318-10	33-31	21C-E6371-00	11-8	21C-F3317-00	28-18	21C-H2540-00	39-1	2GS-E3750-00	6-11	2GS-F171L-00	17-22
20P-H3333-00	33-8	21C-E6380-02	11-22	21C-F3340-02	20-36	21C-H2917-01	39-11	2GS-E3770-00	6-4	2GS-F171M-00	17-23
20P-H3333-00	33-17	21C-E7258-00	12-13	21C-F3346-00	20-39	21C-H3350-00	39-14	2GS-E3907-00	21-27	2GS-F1721-00	17-5
20P-H3333-00	33-26	21C-E7402-40	12-6	21C-F3411-00	20-38	21C-H3756-03	34-9	2GS-E3971-00	21-23	2GS-F172A-00-P0	17-2
20P-H3333-00	33-35	21C-E7471-00	12-4	21C-F3412-00	19-1	21C-H4312-00	35-6	2GS-E4411-00	6-12	2GS-F172F-00-P0	17-6
20P-H3618-00	33-6	21C-E8101-01	14-4	21C-F3413-00	19-2	21C-H4347-00	35-3	2GS-E4412-00	6-13	2GS-F1731-00-33	17-10
20P-H3618-00	33-15	21C-E8140-00	14-1	21C-F3414-00	19-3	21C-H4502-00	35-5	2GS-E4437-00	6-22	2GS-F1731-00-P0	17-10
20P-H3618-00	33-24	21C-E8337-00	14-3	21C-F3435-00	19-10	21C-WF461-20	21-22	2GS-E4450-00	6-14	2GS-F1732-00	17-25

2GS1

PART NO	REF. NO.	PART NO	REF. NO.	PART NO	REF. NO.	PART NO	REF. NO.	PART NO	REF. NO.	PART NO	REF. NO.
2GS-F1735-00	17-26	2GS-F474W-00	23-14	2GS-H592A-00	39-5	54B-E5121-01	8-2	5YY-F3462-00	20-37	90159-06054	23-12
2GS-F1741-00-33	17-11	2GS-F4750-00	23-4	2GS-W0045-00	25-8	54B-E5362-00	9-21	5YY-F413B-00	22-16	90160-05812	22-5
2GS-F1741-00-P0	17-11	2GS-F478E-00	23-9	2GS-WF211-00	18-1	54B-E6144-00	11-17	5YY-F413B-00	22-18	90160-05812	35-16
2GS-F177G-00	38-16	2GS-F5181-00	24-8	2GS-XF13F-00-33	22-15	54B-E6321-00	11-9	5YY-F5351-00	26-10	90170-05302	3-11
2GS-F2141-00	18-4	2GS-F5381-00	26-32	2GS-XF13F-00-P0	22-15	54B-E6351-00	11-12	5YY-F5867-00	28-9	90170-10012	2-26
2GS-F2151-00	18-8	2GS-F5441-00	26-19	2GS-XF13J-00-33	22-17	54B-E6357-00	11-24	5YY-H1950-10	39-6	90171-14800	24-9
2GS-F2210-00	18-23	2GS-F580U-00	25-3	2GS-XF13J-00-P0	22-17	54B-E7258-00	11-2	5YY-H2131-10	38-9	90171-14800	26-35
2GS-F3100-00	20-1	2GS-F6280-00	37-1	2GS-XF17C-00-33	17-15	54B-F5852-00	28-7	5YY-H2911-00	37-5	90179-05804	21-21
2GS-F3102-00	20-2	2GS-F6290-00	37-2	2GS-XF17C-00-P0	17-15	54B-F5854-00	28-6	5YY-H3318-10	33-37	90179-05804	34-7
2GS-F3103-00	20-19	2GS-F6311-00	27-2	2GS-XF17D-00-33	21-15	54B-F5855-00	28-11	90101-06046	26-12	90179-06835	30-14
2GS-F3121-00	35-12	2GS-F6312-00	27-3	2GS-XF17D-00-P0	21-15	54B-F589H-00	28-8	90101-10812	30-17	90179-08148	27-8
2GS-F3122-00-33	35-14	2GS-F7414-00	29-11	2GS-XF412-00-33	22-1	54B-F5916-00	25-10	90105-06169	21-12	90179-08674	15-8
2GS-F3122-00-P0	35-14	2GS-F7424-00	29-27	2GS-XF412-10-P0	22-1	54B-F5917-00	25-13	90105-06859	28-10	90179-10811	15-4
2GS-F3123-00-P0	35-17	2GS-F7452-00	29-2	2GS-XF413-00-33	22-2	54B-F5919-00	25-6	90105-08002	15-6	90179-12802	11-5
2GS-F3132-00-33	35-15	2GS-F7462-00	29-14	2GS-XF413-10-P0	22-2	54B-F5924-00	25-9	90105-08196	4-7	90179-14001	11-20
2GS-F3132-00-P0	35-15	2GS-H1410-00	31-2	2GS-XH250-00	39-13	54B-F5925-00	25-11	90105-08862	7-16	90179-22025	19-12
2GS-F3144-00	20-12	2GS-H1450-00	31-1	35B-F7451-00	29-1	54B-F5926-00	25-14	90105-10319	25-15	90179-25615	19-7
2GS-F3144-00	20-29	2GS-H1800-00	32-1	35B-F7461-00	29-13	54B-F5937-00	25-12	90105-10861	15-10	90183-05067	17-24
2GS-F3145-00	20-14	2GS-H183G-00	32-4	36L-F533A-00	26-14	54B-F6338-00	28-15	90105-12057	18-25	90183-05807	17-3
2GS-F3145-00	20-31	2GS-H1960-00	38-10	36L-H3936-00	37-11	54B-H1940-01	39-7	90105-12804	18-26	90183-05807	17-7
2GS-F3170-00	20-17	2GS-H2115-00	38-7	36L-H3945-10	37-7	54B-H331A-00	33-2	90109-06259	14-2	90183-05807	17-12
2GS-F3170-00	20-34	2GS-H2116-00	38-8	38B-E2119-00	3-3	54B-H331E-10	33-5	90109-06859	28-14	90183-05807	22-7
2GS-F317E-00	19-16	2GS-H2310-00	38-1	3C1-E6344-00	11-18	54B-H332A-00	33-11	90109-08063	26-25	90183-05807	22-20
2GS-F317F-00	19-17	2GS-H2501-00	39-9	3S0-E2118-00	3-6	54B-H332E-10	33-14	90109-08202	29-8	90183-05807	35-20
2GS-F3438-00	19-13	2GS-H2590-00	38-13	45P-E5353-00	9-5	54B-H333A-00	33-20	90109-08202	29-20	90183-06069	16-17
2GS-F3487-00	34-6	2GS-H3310-00	33-1	45S-F411G-00	22-8	54B-H334A-00	33-29	90109-08831	26-29	90183-06069	18-18
2GS-F4110-00	21-1	2GS-H3320-00	33-10	45S-F411H-00	22-9	54B-H3912-00	37-6	90110-06256	1-24	90183-06069	35-11
2GS-F4124-00	22-12	2GS-H3330-00	33-19	45S-F411J-00	22-10	54B-H3922-00	28-13	90110-06304	1-19	90185-10804	30-20
2GS-F414A-00	21-17	2GS-H333E-00	33-23	45S-F7111-00	30-1	54B-H3980-01	28-12	90110-06393	4-15	90201-05036	34-4
2GS-F414G-00	21-29	2GS-H3340-00	33-28	4D9-12117-00	3-7	54B-H4714-00	36-5	90111-05808	5-2	90201-05036	36-8
2GS-F4170-00	21-31	2GS-H334E-00	33-32	4FM-23125-40	20-16	54B-W0041-00	28-5	90111-06117	16-5	90201-05820	1-23
2GS-F4180-00	21-34	2GS-H3371-00	39-15	4FM-23125-40	20-33	54B-W0047-00	25-5	90111-06807	7-7	90201-06055	17-20
2GS-F418E-00	39-19	2GS-H3500-00	34-1	4LS-E3411-00	5-5	54B-W0048-00	25-7	90111-06826	7-6	90201-060A3	18-10
2GS-F4191-00	21-8	2GS-H3615-00	34-5	4LS-E5598-00	4-11	54B-W0057-00	25-4	90111-08029	25-2	90201-060A3	21-9
2GS-F419A-00	21-35	2GS-H3963-00	37-4	4LS-E7456-00	12-21	54B-WF587-00	28-4	90116-08826	26-20	90201-060H9	14-13
2GS-F4312-00	21-36	2GS-H3972-00	37-3	4LS-F341E-00	19-5	5CA-E4147-00	6-5	90119-06060	18-19	90201-06380	21-10
2GS-F4313-00	21-37	2GS-H4300-00	35-1	4LS-F341E-10	19-4	5D9-H1828-00	32-2	90119-06137	17-18	90201-08326	26-27
2GS-F4314-00	21-38	2GS-H430A-00	35-4	4LS-F4741-00	23-6	5D9-H1861-00	32-3	90119-06137	38-17	90201-08612	7-13
2GS-F4315-00	21-39	2GS-H4710-00	36-1	52B-H3591-00	39-3	5TP-H1801-00	32-5	90123-08046	27-7	90201-087F0	7-17
2GS-F4364-00	21-25	2GS-H4720-00	36-3	52S-E2169-10	3-8	5TS-F6372-00	27-6	90149-05807	1-8	90201-08834	37-10
2GS-F4491-00	21-28	2GS-H4721-00	36-2	54B-E1476-00	2-19	5TS-F836B-02	17-16	90149-06118	39-10	90201-10128	39-4
2GS-F4549-00	21-16	2GS-H4723-00	36-4	54B-E3300-00	5-1	5US-F5321-10	26-6	90149-06829	4-12	90201-105E8	10-3
2GS-F4710-00	23-1	2GS-H5546-00	38-5	54B-E4757-00	7-8	5US-H5110-00	39-17	90149-06829	16-16	90201-10815	28-3
2GS-F474A-00	23-13	2GS-H591A-00	38-4	54B-E5111-00	8-1	5YY-F3416-00	19-6	90159-05065	21-20	90201-10841	29-10

2GS1

PART NO	REF. NO.	PART NO	REF. NO.	PART NO	REF. NO.	PART NO	REF. NO.	PART NO	REF. NO.	PART NO	REF. NO.
90201-10841	29-26	90387-068S1	18-21	90480-15363	21-3	93102-12875	14-8	95022-06010	12-22	95812-08016	15-7
90201-10841	30-19	90387-068S1	39-21	90480-15363	21-43	93102-12877	11-27	95022-06010	23-8	95812-10035	30-6
90201-12019	11-4	90387-07819	19-20	90501-06800	13-7	93102-22818	12-19	95022-06012	1-2	95812-10080	15-3
90201-12019	31-6	90387-08079	16-10	90501-10815	30-12	93106-22808	24-3	95022-06020	5-8	95817-06012	22-11
90201-12028	18-7	90387-08822	15-12	90501-12743	30-25	93106-22808	26-4	95022-06025	1-10	95817-08025	23-15
90201-122H1	18-28	90387-09806	6-24	90506-12001	26-8	93106-26801	26-18	95022-06025	1-13	95817-08025	29-12
90201-15022	2-17	90387-10003	30-18	90506-15001	26-9	93210-14899	9-10	95022-06040	9-7	95817-08025	29-28
90201-15814	26-37	90387-107H6	21-7	90506-23807	30-16	93210-19809	9-22	95022-06040	9-20	95817-10130	15-9
90201-178D3	12-12	90387-10822	30-2	90506-26807	29-24	93210-29807	32-7	95022-06045	8-7	95822-06030	21-13
90201-178D3	12-24	90387-12845	18-24	90506-35816	30-3	93210-32814	9-12	95022-06050	9-8	95827-06014	22-14
90201-22793	12-8	90387-12863	18-2	90508-183B9	29-3	93306-002YV	4-3	95022-06055	8-6	95827-06014	39-16
90201-256K6	10-7	90387-155J0	2-21	90508-183B9	29-15	93306-054Y5	26-16	95022-06065	5-9	95827-08016	6-25
90202-05180	22-6	90387-20813	2-13	90508-32805	14-5	93306-054Y6	12-2	95022-06070	8-8	95827-08016	16-9
90202-26142	19-9	90401-10818	28-2	91312-05008	39-8	93306-054YA	26-16	95022-08012	23-3	95827-08016	19-19
90208-20003	11-21	90430-06817	1-3	91312-05010	21-30	93306-054YE	12-2	95022-08035	19-15	97012-06014	16-7
90209-18208	12-11	90430-06817	1-14	91312-05016	3-13	93306-201YE	12-3	95022-08040	19-11	97012-06014	16-18
90214-10006	2-18	90430-10148	39-2	91312-06014	9-2	93306-252XG	24-4	95027-06016	18-11	97012-06014	21-11
90215-10284	2-25	90430-12227	5-4	91314-06020	10-9	93306-252XG	26-3	95027-06016	18-17	97012-06014	21-32
90240-06804	30-10	90445-13806	30-27	91314-06020	32-6	93306-252YG	2-22	95027-06016	18-22	97012-06020	14-14
90249-12008	30-13	90445-14808	21-18	91317-06016	4-17	93306-252YH	24-4	95302-08700	26-26	97502-05520	38-2
90252-55800	24-10	90450-43805	6-9	91317-06016	31-4	93306-252YH	26-3	9530N-06600	26-13	97507-06425	37-9
90252-55800	26-36	90450-48805	6-10	91317-06025	6-2	93306-253Y6	2-23	95333-08600	26-30	97602-05320	6-21
90269-06814	17-14	90464-14803	34-10	91317-06030	31-3	93306-253Y7	12-17	95333-08600	26-42	97702-40512	36-6
90269-06814	17-17	90464-16006	21-24	91401-20012	14-11	93306-272X1	12-18	95602-08200	26-21	97702-50012	17-4
90269-06814	35-13	90464-16006	21-40	91401-20012	26-28	93306-272X4	12-18	95602-10200	30-5	97702-50012	17-8
90269-06814	35-18	90464-16061	38-14	91401-20012	30-8	93306-305YC	2-6	95607-12200	18-6	97702-50012	17-13
90280-03017	2-7	90464-50800	38-15	91401-25015	29-5	93310-325X3	10-6	95612-08635	1-4	97702-50012	21-26
90282-05031	2-24	90464-80802	21-5	91401-25015	29-17	93310-628X0	2-3	95612-12100	18-27	97702-50012	22-19
90338-30802	9-24	90467-09006	21-41	91401-25015	30-24	93315-112Y9	11-26	95702-05500	39-18	97702-50012	35-19
90340-12808	5-3	90467-100A1	21-42	91701-08035	30-23	93317-318Y5	18-3	95707-08500	7-12	97702-50016	36-7
90340-14117	9-9	90467-12800	6-20	91701-08040	29-4	93410-22039	12-9	95707-12500	31-5	97707-50014	34-3
90340-32805	9-11	90467-13816	6-27	91701-08040	29-16	93450-16812	2-10	9570N-06300	37-8	98502-05014	29-7
90387-06023	7-5	90467-15803	6-28	91810-14804	1-18	93501-04805	30-26	95802-06010	8-5	98502-05014	29-19
90387-06048	16-8	90467-20050	6-18	91830-21014	8-4	93505-16844	11-25	95802-06010	29-22	98502-06012	12-5
90387-06048	16-19	90480-01558	17-21	91830-21014	9-6	93605-06800	4-2	95802-06025	35-9	98507-06014	17-19
90387-06048	21-33	90480-01558	36-10	91830-21014	9-19	93608-43238	14-7	95802-06025	38-11	98517-05012	27-4
90387-06048	22-13	90480-01559	22-4	92902-08200	23-16	93822-14800	12-20	95802-08025	7-14	98902-05020	34-8
90387-066J9	18-9	90480-08801	16-3	92902-08200	26-31	93900-00824	24-6	95802-08035	7-15	99001-10600	14-6
90387-06737	6-23	90480-12812	7-4	92902-08600	26-41	93900-00824	26-23	95807-06014	39-20	99009-10400	10-4
90387-068B2	21-6	90480-12812	9-16	92907-14200	24-11	94110-17818	24-5	95807-06020	9-14	99009-17400	12-25
90387-068C5	16-2	90480-13398	22-3	92990-06200	14-12	94114-17801	26-22	95807-06020	16-4	99009-20500	11-28
90387-068C9	9-15	90480-14101	35-7	92990-06200	30-9	94568-B5128	26-38	95812-06012	19-21		
90387-068D4	35-8	90480-14818	34-2	92990-06200	30-11	94568-G2096	4-8	95812-06012	35-10		
90387-068N2	18-16	90480-14819	36-9	93101-10838	9-23	94703-00885	1-16	95812-06030	6-7		

*COPYRIGHT: All rights reserved. No part of this publication
may be reproduced without permission.*



INDIA YAMAHA MOTOR PVT. LIMITED

A-3, Industrial Area, Noida-Dadri Road,
Surajpur-201306, Distt: Gautam Budh Nagar (UP)

1Y11-(PC-01)-087-06-14-E
PRINTED IN INDIA