



PARTS CATALOGUE

FAZER-FZH150



2WS1



Yamaha Black



Vivid Red Cocktail 1



Bluish White Cocktail 1

Fazer 2WS1 PARTS CATALOGUE
INDIA YAMAHA MOTOR PVT. LTD.
1st edition, Sept. 2014 All rights reserved.
Any reprinting or unauthorized use without the written permission of
INDIA YAMAHA MOTOR PVT. LTD. is expressly prohibited.
Printed in INDIA

FOREWORD

This Parts Catalogue is related to the parts in use for the YAMAHA - 2WS1 When you are ordering replacement parts for 2WS1 refer to this Parts Catalogue and quote both part numbers and part names correctly.

1. Modifications or additions which have been made after issue of the Parts Catalogue will be announced in the Part Information. It is advisable that according to the Part Information you make necessary corrections to the Parts Catalogue on hand to keep it up-to-date.
2. Indication of No. of constituent parts for assembly.
The numeral appearing to the right of each constituent part under the description indicates the quantity of such parts for each individual assembly unit.

3. Abbreviations

The following abbreviations are used in this Parts Catalogue.

“UR” Use specified parts number.

“UN” Use as many as needed.

“AP” Alternate Parts

“LM” Locally Made (Parts need to be ordered locally)

“F#” Frame No. (Applicable machine No.)

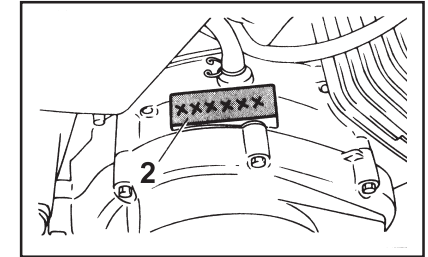
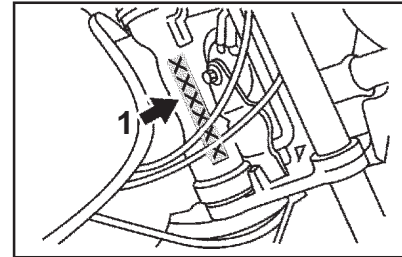
“O/S” Over Size

EXAMPLE

Part No.	Description	Qty
2GS-E1400-09	CRANK SHAFT ASSY.	1
1CK-H2100-00	BATTERY ASSY	1
90445-14808	HOSE	1
2GS-E1102-00	CYLINDER HEAD	1

3. Applicable Serial No. and Color Code

1	Frame Serial No	XXX	2WS1	X	1	X	X	X	xxxxxx
		Mfr Code	Model Code	Prod No Code	Variant Code	Month Code	Year Code	Factory Code	Serial No
2	Engine Serial No		2WS1	xxxxxx					
			Model Code	Serial No.					



Colour Code	Colour Name	Abbreviation
0033	Yamaha Black	YB
0121	Vivid Red Cocktail 1	VRC1
0390	Bluish White Cocktail 1	BWC1

NOTICE

The description and illustration in this Parts Catalogue may not necessarily match with the physical appearance of the parts.

INDIA YAMAHA MOTOR PVT. LTD. reserves the right to carry out modifications on the vehicle, parts or accessories, as may be considered necessary, without being obliged to update this Parts Catalogue immediately.

No part of this Publication may be reproduced without written permission of INDIA YAMAHA MOTOR PVT. LTD.
Spare Parts Division

1) Parts number structure

1) Common Parts number

XXX-XXXXX-XX-XX

Example

2WS-F1110-00-00 - Frame Comp.

Model

Function code
Major classification # E--F--H

Design Serial number

Design Revision
Change Modification

Color Codes Painted Parts

eg:- 2WS	Major classification	YMC number	Local number
	Engine	1	E
	Chassis	2	F
	Electrical	8	H

00	→	01	→	02	→	09	Revision
00	→	10	→	11	→	19	Design
10	→	20	→	21	→	29	Further Design change

eg:- 1X/P0 2X/P1 3X/P2	Note:- 1) 'WE' indicates Kit Assy. fixed by service for market. 2) 'XF' indicates Sub Assy. & individual Parts not serviceable fixed by manufacturing.
---------------------------------	--

Note:- Only Colored parts are 12 digit in Catalog - Rest are 10 Digits(Non-Coloured Parts)

2) Standard parts number /Regular parts number

Standard parts number ;

9XX-XXXXXXX

→ Type of Parts Ex:-

- 947XX=Plug spark
- 932XX="O" Ring
- 985XX=Screw pan head

Regular parts number ;

9XXXX-XXXXX

Category Code Ex:-

- 901XX=Bolt and Nut
- 902XX=Washer and Rivet
- 903XX=Bush and Collor
- 904XX=Hose and Clamp
- 905XX=Springand spacer

CONTENTS

ENGINE

CYLINDER	2
CRANKSHAFT & PISTON	3
VALVE	4
CAMSHAFT & CHAIN	5
OIL PUMP.....	6
INTAKE	7
EXHAUST.....	8
CRANKCASE	9
CRANKCASE COVER 1	10
STARTER CLUTCH	11
CLUTCH	12
TRANSMISSION	13
SHIFT CAM FORK	14
SHIFT SHAFT.....	15

CHASSIS

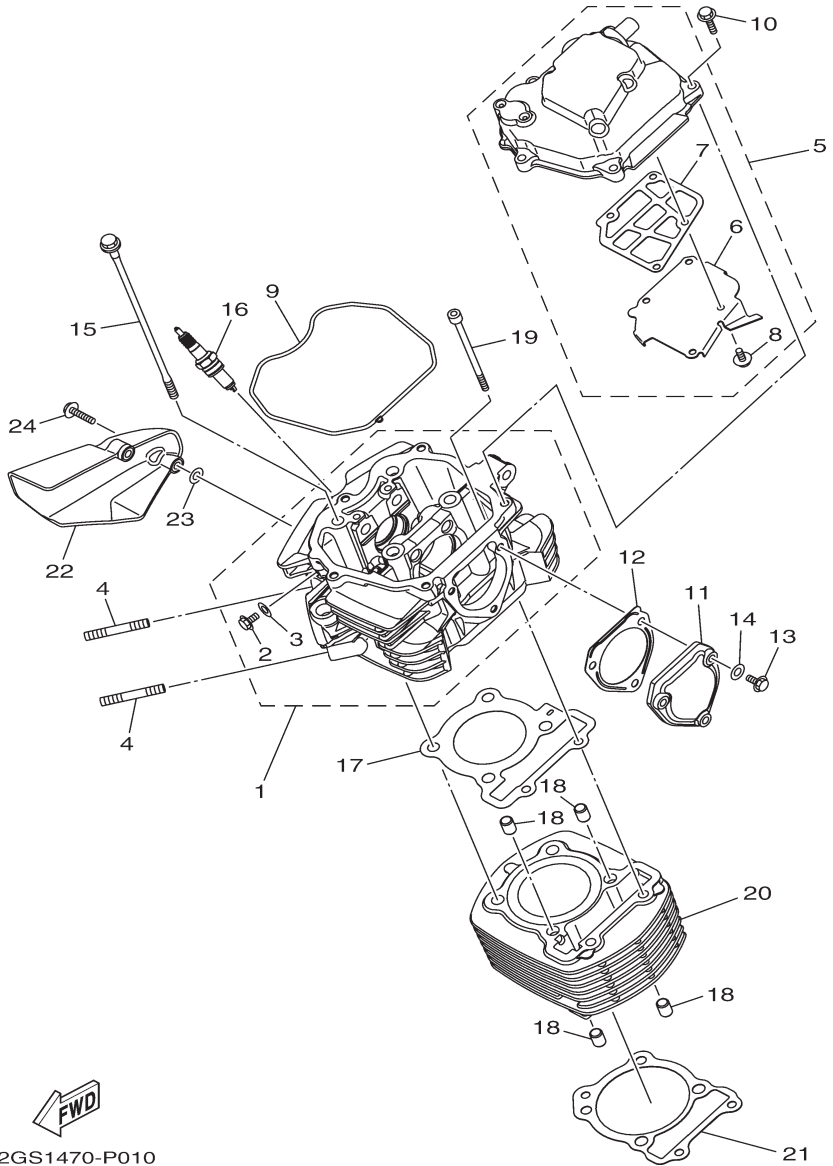
FRAME	16
FENDER	17
SIDE COVER	18
REAR ARM. & SUSPENSION	20
STEERING	21
FRONT FORK	22
FUEL TANK	24

FUEL TANK-2	26
SEAT	27
FRONT WHEEL	28
FRONT BRAKE CALIPER	29
REAR WHEEL	30
STEERING HANDLE & CABLE	32
FRONT MASTER CYLINDER	33
STAND & FOOTREST	34
STAND & FOOTREST-2	35
COWLING 1	36
GENERATOR.....	38
STARTER MOTOR	39
FLASHER LIGHT.....	40
METER	42
HEAD LIGHT	43
TAIL LIGHT	44
HANDLE SWITCH & LEVER	45
ELECTRICAL 1	46
ELECTRICAL 2	47

NUMERICAL INDEX

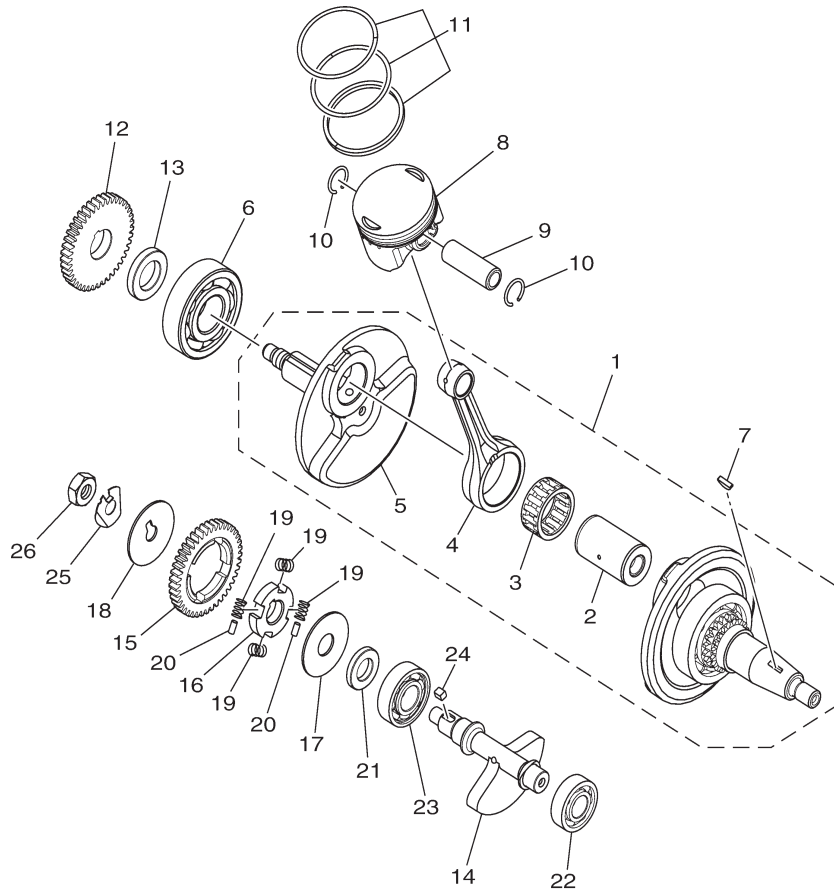
FIG. 1 (1E0) CYLINDER

REF. NO.	PART NO.	PART NAME	2WS1				REMARKS
1	2GS-E1102-00	CYLINDER HEAD ASSY	1				
2	95022-06012	.BOLT, FLANGE	1				
3	90430-06817	.GASKET	1				
4	95612-08635	BOLT, STUD	2				
5	2GS-E1190-00	COVER, CYLINDER HEAD 1	1				
6	2GS-E1165-00	.PLATE, BREATHER	1				
7	21C-E1169-10	.GASKET, BREATHER COVER	1				
8	90149-05807	.SCREW	4				
9	2GS-E1193-00	GASKET, HEAD COVER 1	1				
10	95022-06025	BOLT, FLANGE	5				
11	2GS-E1186-00	COVER, CYLINDER HEAD SIDE 2	1				
12	21C-E2435-11	GASKET	1				
13	95022-06025	BOLT, FLANGE	3				
14	90430-06817	GASKET	3				
15	2GS-E1361-00	BOLT, CYLINDER HOLDING 1	4				
16	94703-00885	PLUG, SPARK (NGK CPR8EA)	1				
17	2GS-E1181-01	GASKET, CYLINDER HEAD 1	1				
18	91810-14804	PIN, DOWEL	4				
19	90110-06304	BOLT, HEXAGON SOCKET HEAD	2				
20	2GS-E1310-00	CYLINDER	1				
21	21C-E1351-00	GASKET, CYLINDER	1				
22	21C-E2661-10	DUCT	1				
23	90201-05820	WASHER, PLATE	2				
24	90110-06256	BOLT, HEXAGON SOCKET HEAD	2				



2GS1470-P010

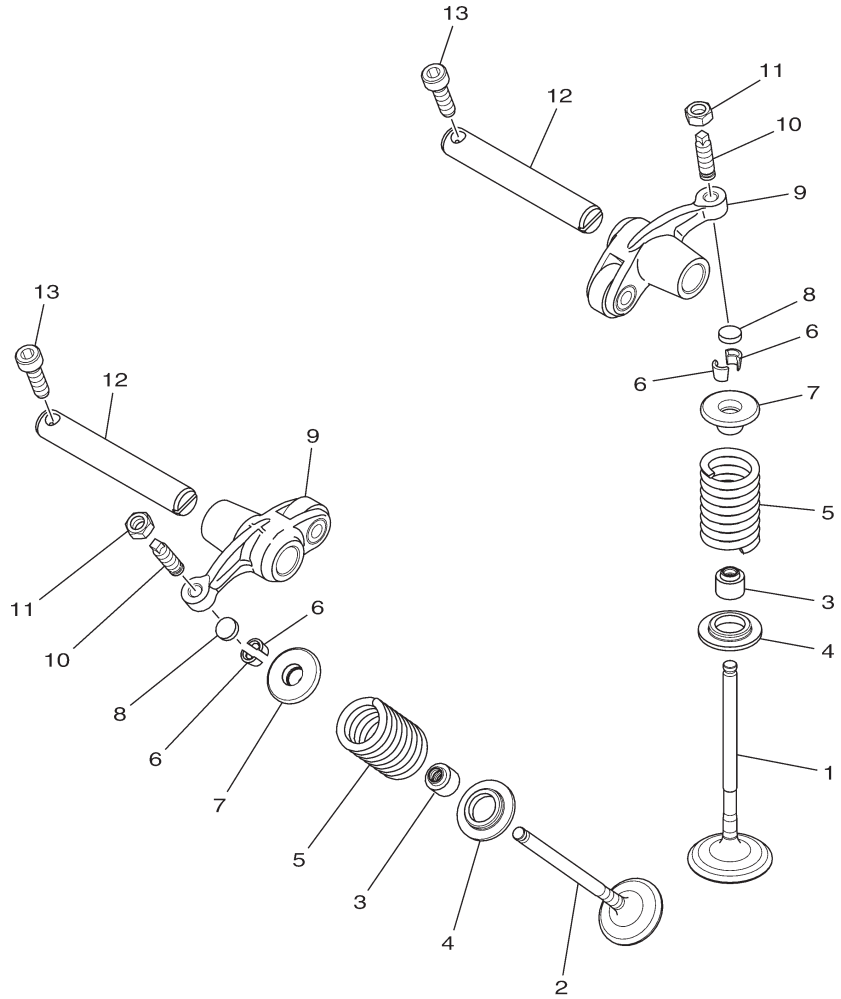
FIG. 2 (110) CRANKSHAFT & PISTON



REF. NO.	PART NO.	PART NAME	2WS1				REMARKS
1	2GS-E1400-09	CRANKSHAFT ASSY	1				
2	21C-E1681-01	.PIN, CRANK 1	1				Not Serviceable
3	93310-628X0	.BEARING	1				Not Serviceable
4	2GS-E1651-00	.ROD, CONNECTING	1				Not Serviceable
5	2GS-E1422-00	.CRANK 2	1				Not Serviceable
6	93306-305YC	BEARING	1				
7	90280-03017	KEY, WOODRUFF	1				
8	2GS-E1631-00	PISTON (STD)	1				
	2GS-E1636-09	PISTON (0.50MM O/S)	1				AP
	2GS-E1638-09	PISTON (1.00MM O/S)	1				AP
9	21C-E1633-00	PIN, PISTON	1				
10	93450-16812	CIRCLIP	2				
11	2GS-E1603-00	PISTON RING SET (STD)	1				
	2GS-E1605-00	PISTON RING SET (0.50MM O/S)	1				AP
	2GS-E1607-00	PISTON RING SET (1.00MM O/S)	1				AP
12	2GS-E1536-00	GEAR, DRIVE	1				
13	90387-20813	COLLAR	1				
14	2GS-E1454-00	WEIGHT 1	1				
15	2GS-E1531-00	GEAR, BALANCE WEIGHT	1				
16	21C-E1496-20	BOSS, BUFFER	1				
17	90201-15022	WASHER, PLATE	1				
18	90214-10006	WASHER, CLAW	1				
19	54B-E1476-00	SPRING	4				
20	21C-E3362-00	ROLLER	2				
21	90387-155J0	COLLAR	1				
22	93306-252YG	BEARING	1				
23	93306-253Y6	BEARING	1				
24	90282-05031	KEY, STRAIGHT	1				
25	90215-10284	WASHER, LOCK	1				
26	90170-10012	NUT	1				



FIG. 3 (1M0) VALVE



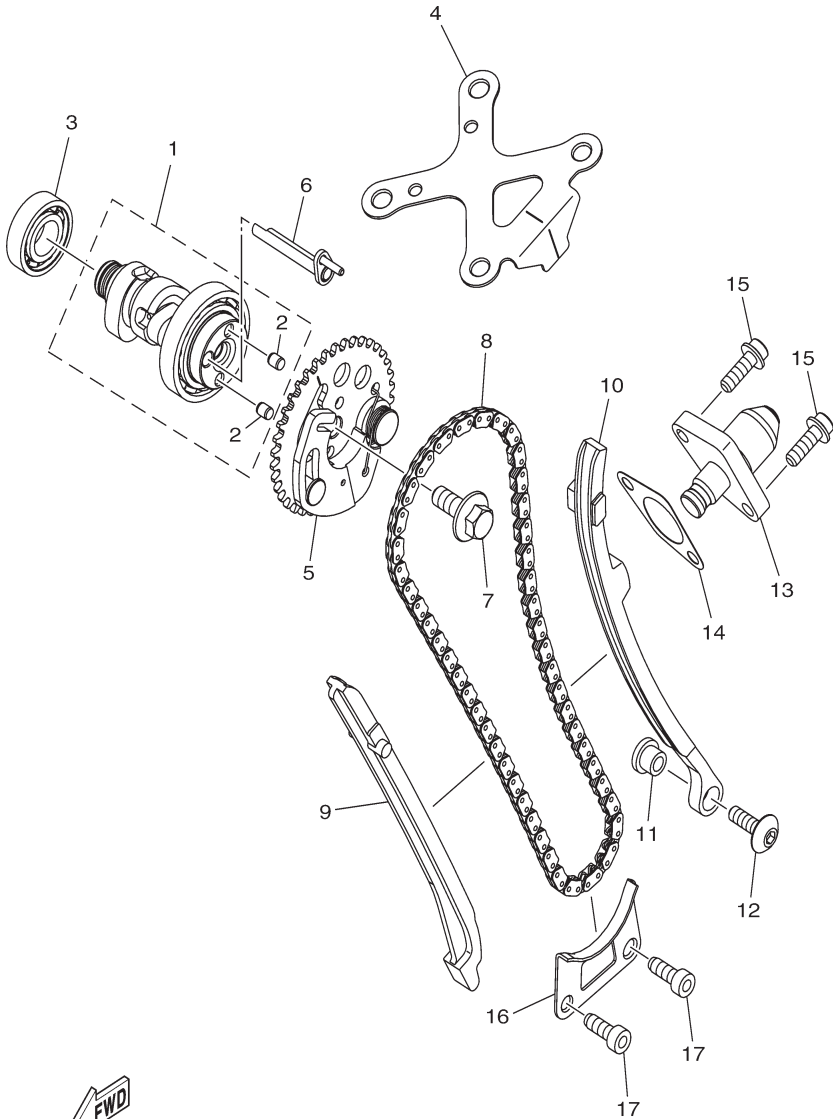
REF. NO.	PART NO.	PART NAME	2WS1				REMARKS
1	2GS-E2111-00	VALVE, INTAKE	1				
2	2GS-E2121-00	VALVE, EXHAUST	1				
3	38B-E2119-00	SEAL, VALVE STEM	2				
4	2GS-E2126-00	SEAT, VALVE SPRING 2	2				
5	2GS-E2113-00	SPRING, VALVE INNER	2				
6	3S0-E2118-00	LOCK, VALVE SPRING RETAINER	4				
7	4D9-12117-00	RETAINER, VALVE SPRING	2				
8	52S-E2169-10	PAD, ADJUSTING	2				
9	1ST-E2151-00	ARM, VALVE ROCKER	2				
10	2GS-12159-00	SCREW, VALVE ADJUSTING	2				
11	90170-05302	NUT	2				
12	21C-E2156-00	SHAFT, ROCKER 2	2				
13	91312-05016	BOLT	2				



2GS1470-P030

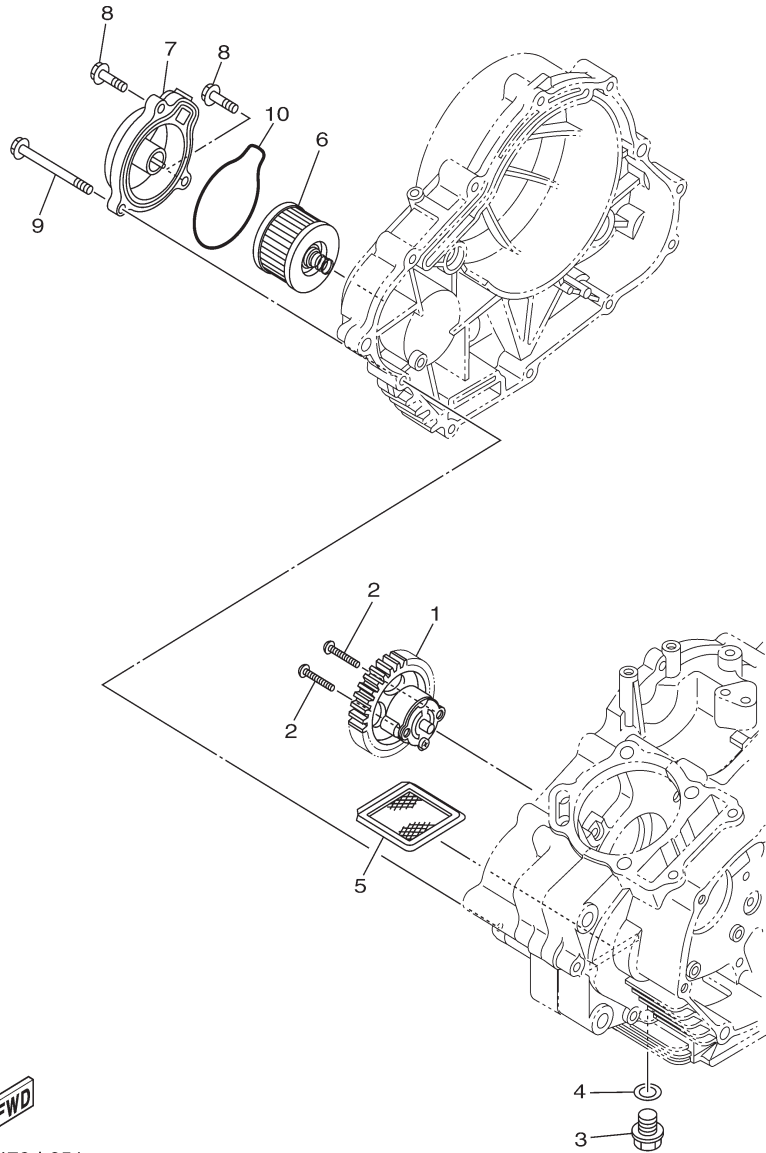
FIG. 4 (1N0) CAMSHAFT & CHAIN

REF. NO.	PART NO.	PART NAME	2WS1				REMARKS
1	2GS-E2170-00	CAMSHAFT ASSY 1	1				
2	93605-06800	.PIN, DOWEL	2				
3	93306-002YV	BEARING	1				
4	2GS-E111F-00	PLATE	1				
5	2GS-E2280-00	DECOMPRESSION ASSY	1				
6	1PM-E2288-00	CAM, DECOMPRESSION	1				
7	90105-08196	BOLT, FLANGE	1				
8	94568-G2096	CHAIN	1				
9	21C-E2231-00	GUIDE, STOPPER 1	1				
10	2GS-E2241-00	GUIDE, STOPPER 2	1				
11	4LS-E5598-00	COLLAR	1				
12	90149-06829	SCREW	1				
13	21C-E2210-02	TENSIONER ASSY, CAM CHAIN	1				
14	2GS-E2213-00	GASKET, TENSIONER CASE	1				
15	90110-06393	BOLT, HEXAGON SOCKET HEAD	2				
16	21C-E2437-00	STOPPER	1				
17	91312-06016	BOLT	2				



2GS1470-P040

FIG. 5 (2C0) OIL PUMP



REF. NO.	PART NO.	PART NAME	2WS1					REMARKS
1	54B-E3300-00	OIL PUMP ASSY	1					
2	90111-05035	BOLT, HEX. SOCKET BUTTON	2					
3	90340-12808	PLUG, STRAIGHT SCREW	1					
4	90430-12227	GASKET	1					
5	4LS-E3411-00	STRAINER, OIL	1					
6	21C-E3440-00	ELEMENT ASSY, OIL CLEANER	1					
7	21C-E3447-00	COVER, OIL ELEMENT	1					
8	95022-06020	BOLT, FLANGE	2					
9	95022-06065	BOLT, FLANGE	1					
10	21C-E3449-00	GASKET, ELEMENT COVER	1					



FIG. 6 (2J0) INTAKE

REF. NO.	PART NO.	PART NAME	2WS1				REMARKS
1	2GS-E3585-00	MANIFOLD	1				
2	91312-06025	BOLT	2				
3	2GS-E3645-00	GASKET, MANIFOLD 1	1				
4	2GS-E3770-00	INJECTOR ASSY	1				
5	5CA-E4147-00	.ORING	1				
6	2GS-E3557-00	GASKET	1				
7	95812-06030	BOLT, FLANGE	1				
8	2GS-E3635-00	JOINT, INTAKE 1	1				
9	90450-43805	HOSE CLAMP ASSY	1				
10	90450-48805	HOSE CLAMP ASSY	2				
11	2GS-E3750-00	THROTTLE BODY ASSY	1				
12	2GS-E4411-00	CASE, AIR CLEANER 1	1				
13	2GS-E4412-00	CAP, CLEANER CASE 1	1				
14	2GS-E4450-00	ELEMENT ASSY, AIR CLEANER	1				
15	2GS-E4453-00	JOINT, AIR CLEANER 1	1				
16	2GS-E4452-00	SEAL	1				
17	2GS-E4877-00	RESONATOR	1				
18	90467-20050	CLIP	1				
19	20P-E443E-00	PIPE, DRAIN	1				
20	90467-12800	CLIP	1				
21	97602-05320	SCREW, PAN HEAD WITH WASHER	6				
22	2GS-E4437-00	DUCT	1				
23	90387-06737	COLLAR	1				
24	90387-09806	COLLAR	2				
25	95822-06016	BOLT, FLANGE	3				
26	2GS-E1166-00	PIPE, BREATHER 1	1				
27	90467-13816	CLIP	1				
28	90467-15803	CLIP	1				

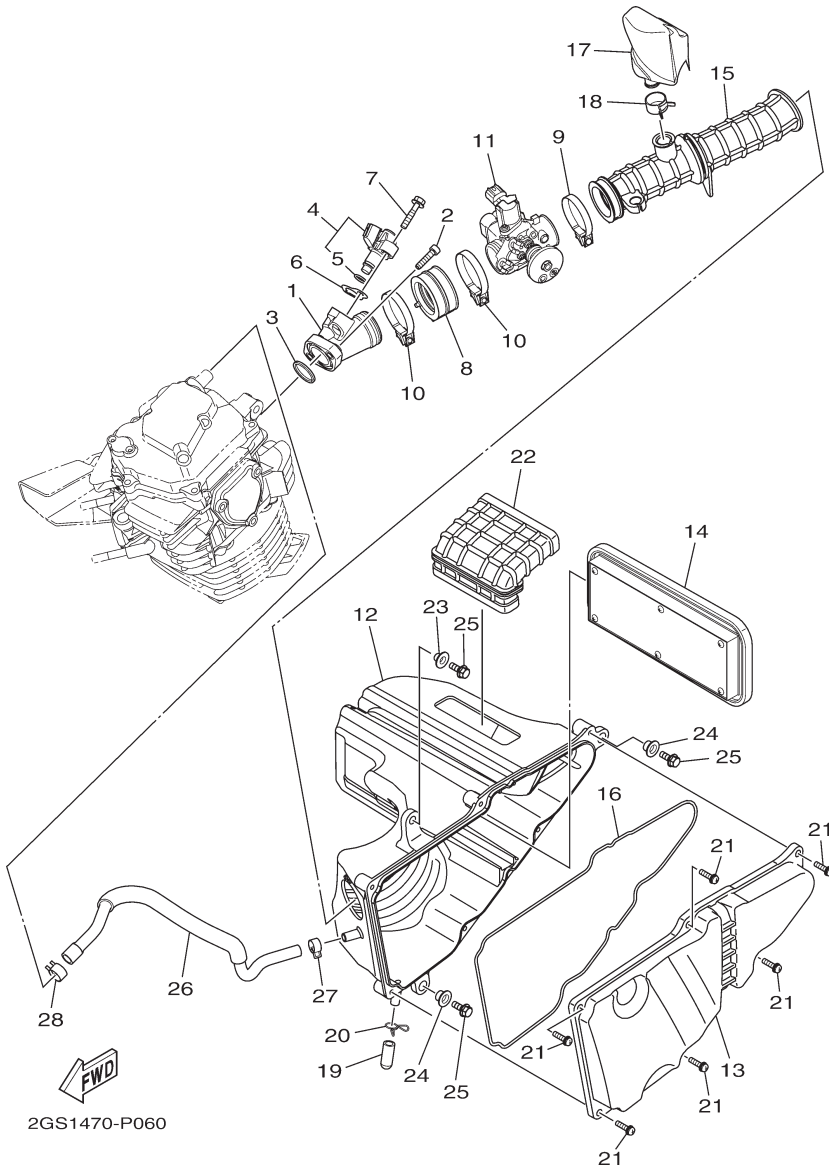
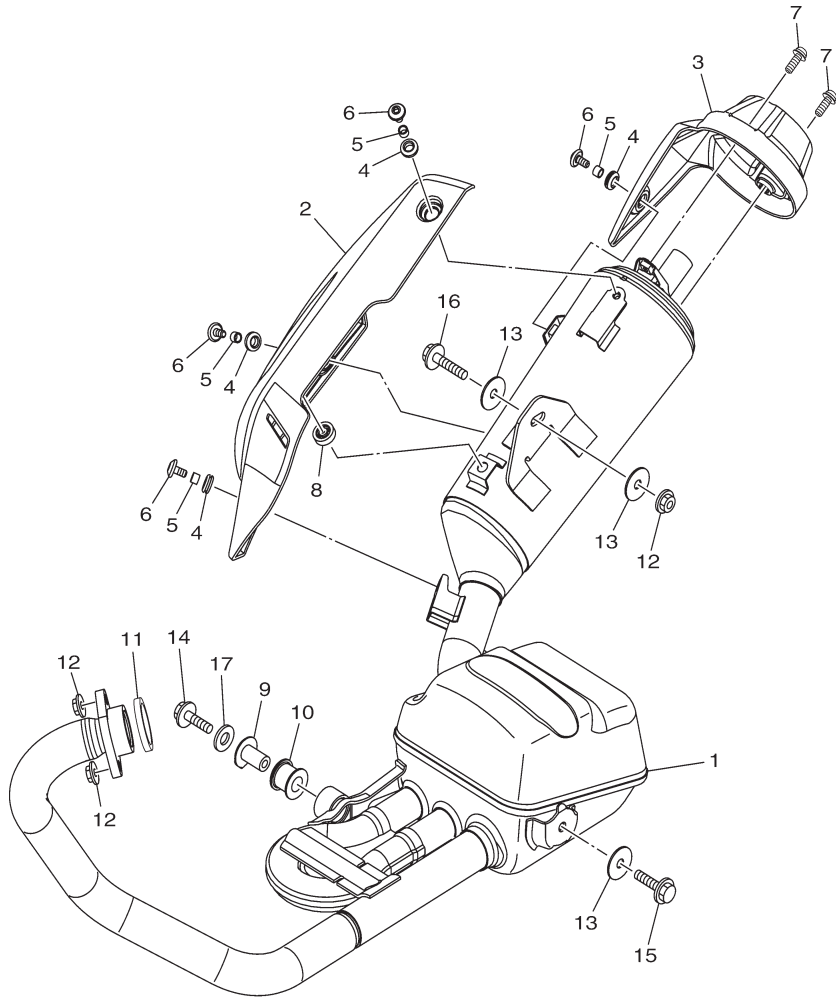


FIG. 7 (2N0) EXHAUST

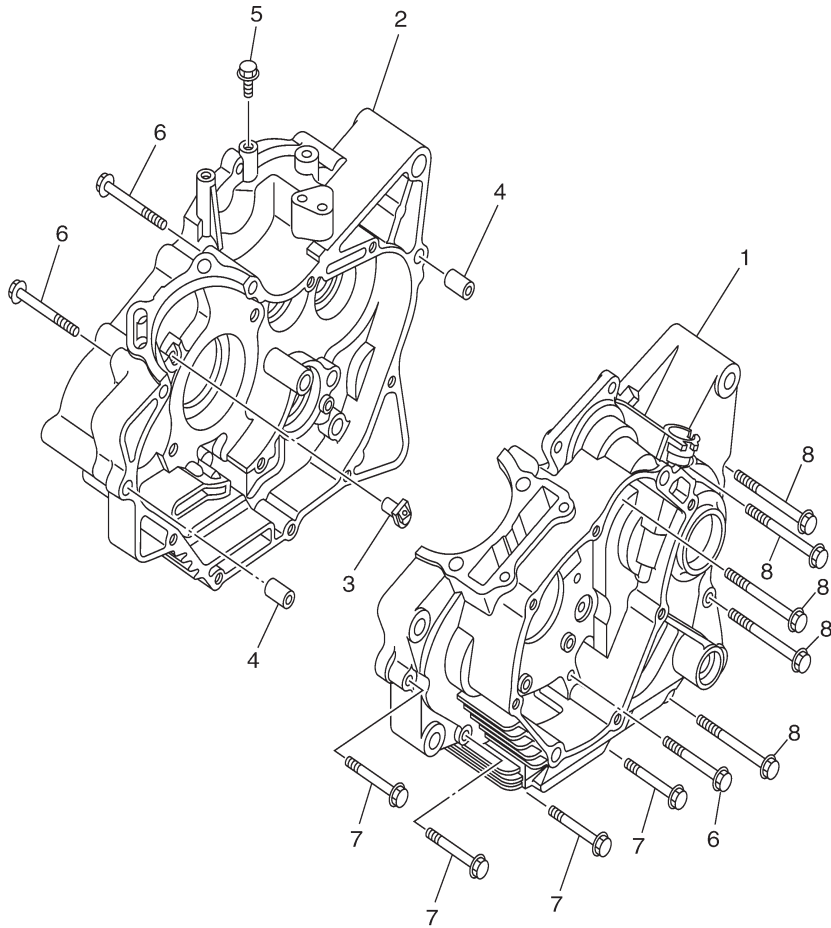


REF. NO.	PART NO.	PART NAME	2WS1				REMARKS
1	2GS-E4703-00	MUFFLER COMP. 1	1				
2	2GS-E4718-00	PROTECTOR, MUFFLER 1	1				
3	2GS-E4799-00	CAP	1				
4	90480-12812	GROMMET	4				
5	90387-06023	COLLAR	4				
6	90111-06826	BOLT,HEX. SOCKET BUTTON	4				
7	90111-06807	BOLT,HEX. SOCKET BUTTON	2				
8	54B-E4757-00	DAMPER, MUFFLER 2	1				
9	21C-E4775-00	NUT	1				
10	20P-E4747-00	DAMPER, MUFFLER	1				
11	21C-E4613-00	GASKET, EXHAUST PIPE	1				
12	95702-08500	NUT, FLANGE	3				
13	90201-08612	WASHER, PLATE	3				
14	95802-08025	BOLT, FLANGE	1				
15	95802-08035	BOLT, FLANGE	1				
16	95812-08040	BOLT, FLANGE	1				
17	90201-087F0	WASHER, PLATE	1				



2GS1470-P070

FIG. 8 (2R0) CRANKCASE

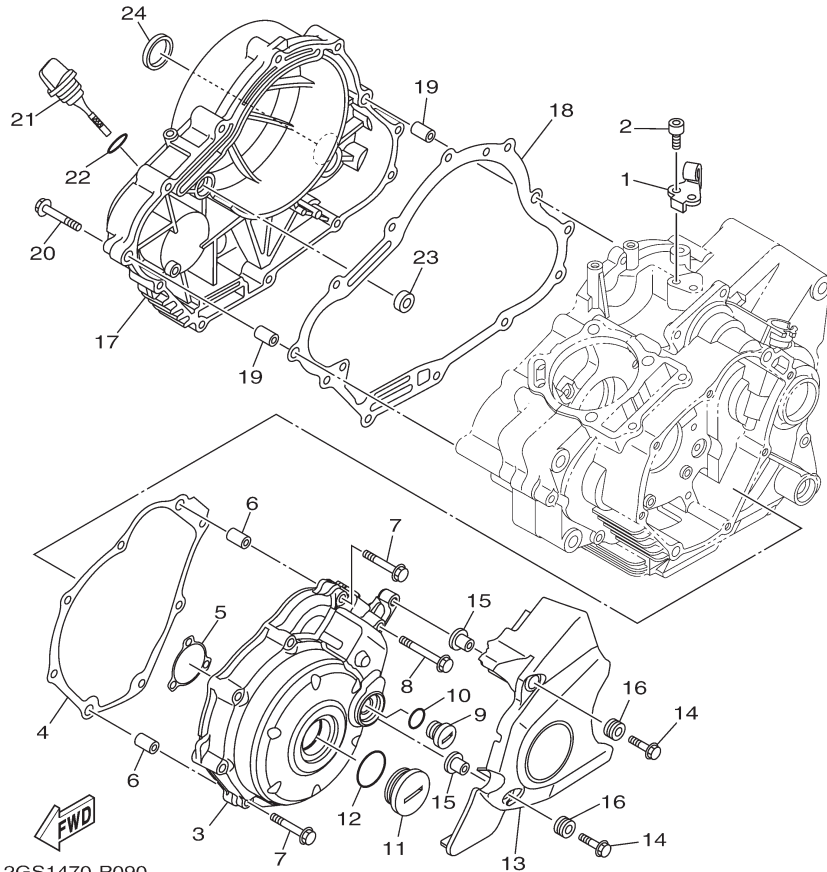
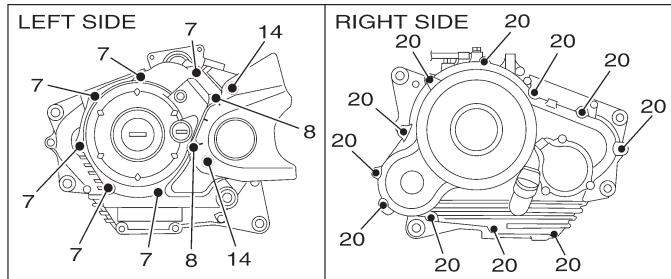


REF. NO.	PART NO.	PART NAME	2WS1				REMARKS
1	54B-E5111-00	CRANKCASE 1	1				
2	54B-E5121-01	CRANKCASE 2	1				
3	21C-E5155-00	NOZZLE 3	1				
4	91830-21014	PIN, DOWEL	2				
5	95802-06010	BOLT, FLANGE	1				
6	95022-06055	BOLT, FLANGE	3				
7	95022-06045	BOLT, FLANGE	4				
8	95022-06070	BOLT, FLANGE	5				



21CG470-M090

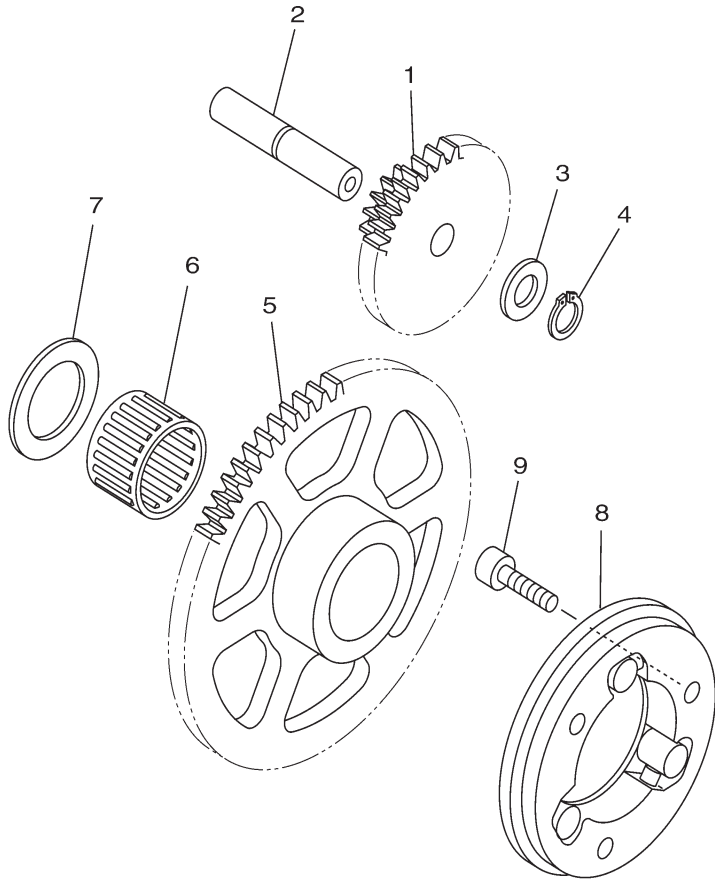
FIG. 9 (2S0) CRANKCASE COVER 1



2GS1470-P090

REF. NO.	PART NO.	PART NAME	2WS1				REMARKS
1	21C-E5441-00	HOLDER, CLUTCH CABLE	1				
2	91312-06014	BOLT	2				
3	2GS-E5411-00	COVER, CRANKCASE 1	1				
4	21C-E5451-10	GASKET, CRANKCASE COVER 1	1				
5	45P-E5353-00	GASKET, DRAIN	1				
6	91830-21014	PIN, DOWEL	2				
7	95022-06040	BOLT, FLANGE	6				
8	95022-06050	BOLT, FLANGE	2				
9	90340-14117	PLUG, STRAIGHT SCREW	1				
10	93210-14899	ORING	1				
11	90340-32805	PLUG, STRAIGHT SCREW	1				
12	93210-32814	ORING	1				
13	2GS-E5418-00	COVER, CHAIN CASE	1				
14	95802-06020	BOLT, FLANGE	2				
15	90387-068C9	COLLAR	2				
16	90480-12812	GROMMET	2				
17	21C-E5421-00	COVER, CRANKCASE 2	1				
18	21C-E5461-10	GASKET, CRANKCASE COVER 2	1				
19	91830-21014	PIN, DOWEL	2				
20	95022-06040	BOLT, FLANGE	11				
21	54B-E5362-00	PLUG, OIL LEVEL	1				
22	93210-19809	ORING	1				
23	93101-10838	OIL SEAL	1				
24	90338-30802	PLUG	1				

FIG. 10 (2V0) STARTER CLUTCH



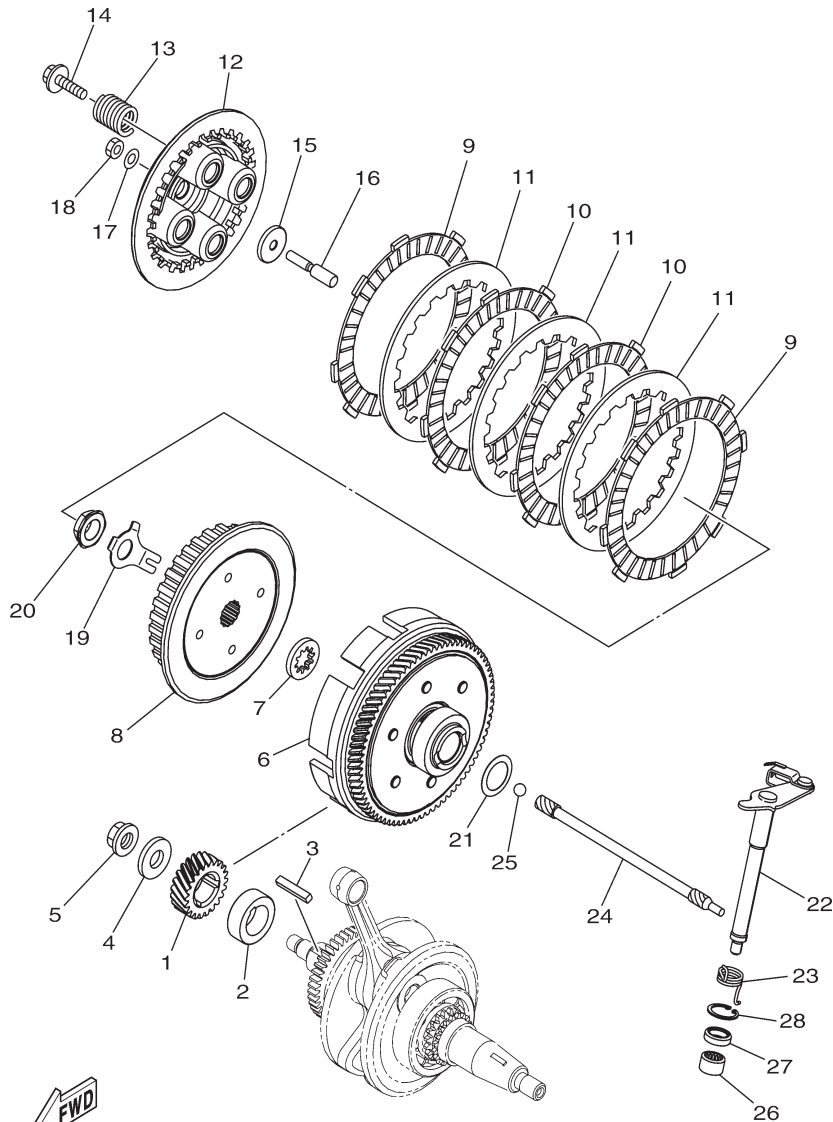
REF. NO.	PART NO.	PART NAME	2WS1				REMARKS
1	1PM-E5514-00	GEAR 2	1				
2	21C-E5521-00	SHAFT 1	1				
3	90201-105E8	WASHER, PLATE	1				
4	99009-10400	CIRCLIP	1				
5	1PM-E5524-10	WHEEL, STARTER	1				
6	93310-325X3	BEARING	1				
7	90201-25290	WASHER, PLATE	1				
8	2GS-E5580-00	STARTER CLUTCH OUTER ASSY	1				
9	91312-06020	BOLT	3				



1PS1473-K120

FIG. 11 (2X0) CLUTCH

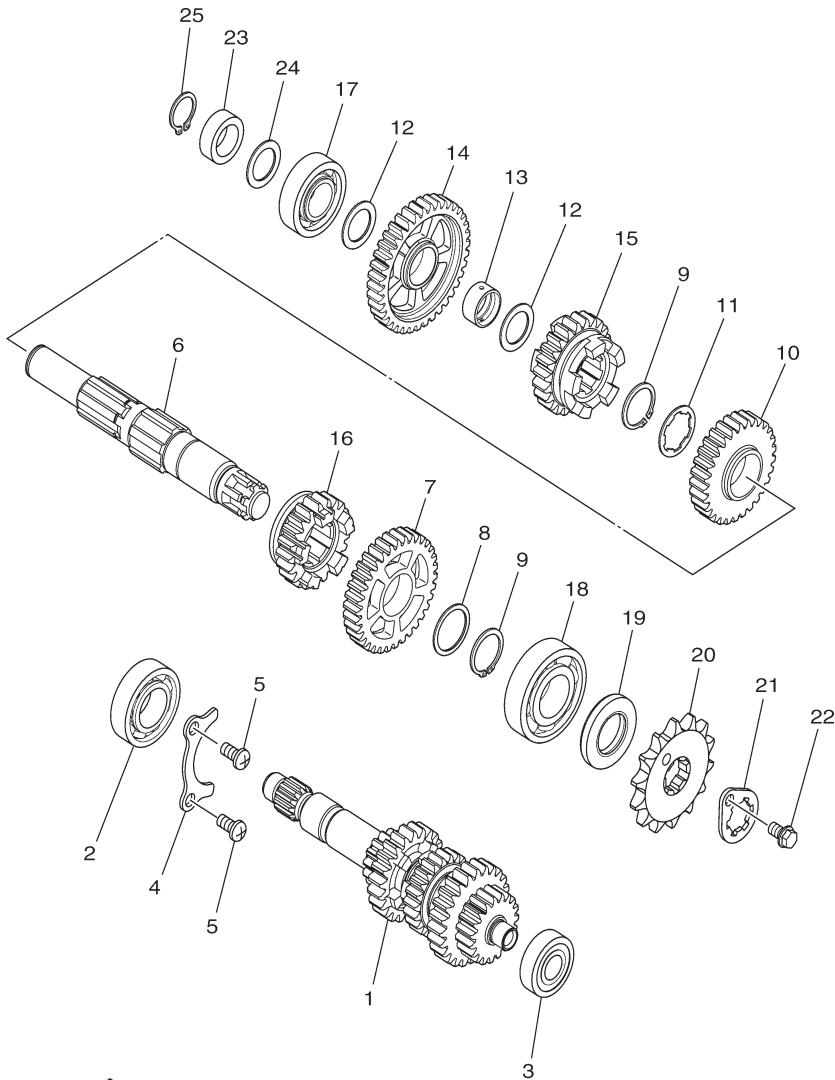
REF. NO.	PART NO.	PART NAME	2WS1				REMARKS
1	2GS-E6111-00	GEAR, PRIMARY DRIVE	1				
2	54B-E7258-00	COLLAR 1	1				
3	21C-E6193-00	KEY, FEATHER	1				
4	90201-12019	WASHER, PLATE	1				
5	90179-12802	NUT	1				
6	2GS-E6150-00	PRIMARY DRIVEN GEAR COMP.	1				
7	21C-E6154-00	PLATE, THRUST 1	1				
8	21C-E6371-00	BOSS, CLUTCH	1				
9	54B-E6321-00	PLATE, FRICTION	2				
10	21C-E6331-00	PLATE, FRICTION 2	2				
11	21C-E6324-00	PLATE, CLUTCH 1	3				
12	54B-E6351-00	PLATE, PRESSURE 1	1				
13	21C-E6333-00	SPRING, CLUTCH 1	4				
14	21C-E6337-00	SCREW, SPRING	4				
15	21C-E6358-00	PLATE, PUSH	1				
16	21C-E6356-01	ROD, PUSH 1	1				
17	54B-E6144-00	WASHER	1				
18	3C1-E6344-00	NUT, ADJUSTING	1				
19	21C-E6135-10	WASHER, LOCK	1				
20	90179-14001	NUT	1				
21	90208-20003	WASHER, CONICAL SPRING	1				
22	21C-E6380-02	PUSH LEVER ASSY	1				
23	1PM-E6345-00	SPRING, RETURN	1				
24	54B-E6357-00	ROD, PUSH 2	1				
25	93505-16844	BALL	1				
26	93315-112Y9	BEARING	1				
27	93102-12877	OIL SEAL	1				
28	99009-20500	CIRCLIP	1				



2GS1470-P110

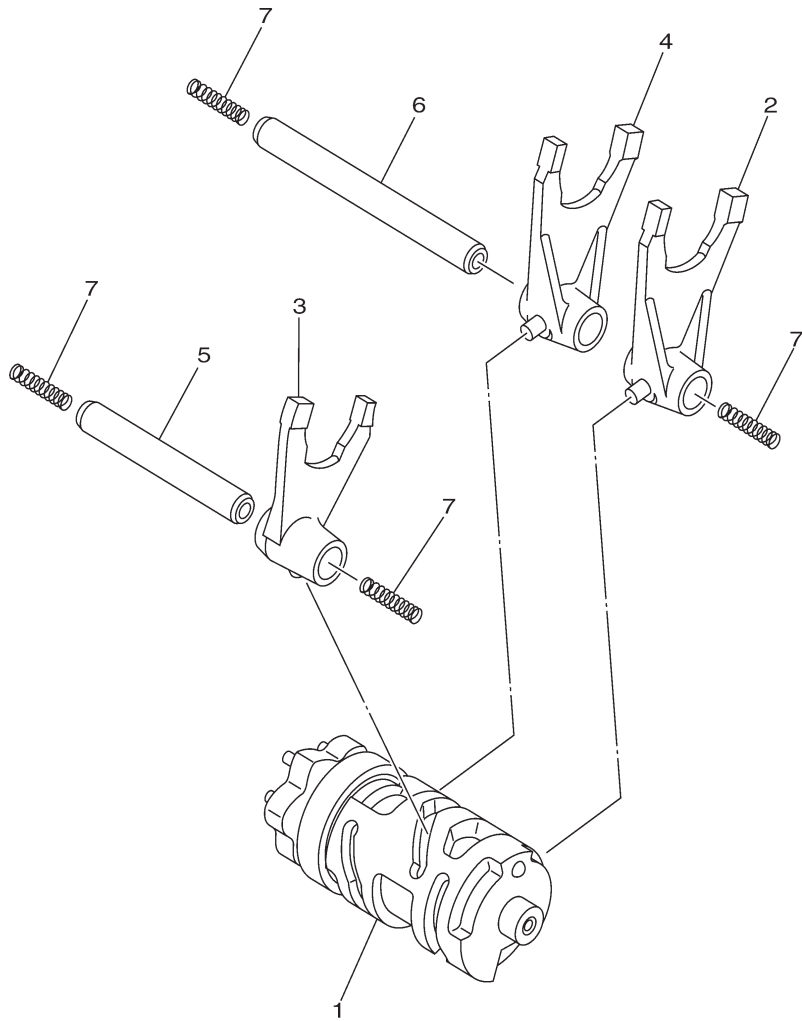
FIG. 12 (2Z0) TRANSMISSION

REF. NO.	PART NO.	PART NAME	2WS1				REMARKS
1	2GS-E7410-00	MAIN AXLE COMP.	1				
2	93306-054YE	BEARING	1				UR
	93306-054Y6	BEARING	1				UR
3	93306-201Y4	BEARING	1				
4	21C-E7471-00	PLATE, COVER	1				
5	98502-06012	SCREW, PAN HEAD	2				
6	2GS-E7402-00	DRIVE AXLE ASSY	1				UR
	21C-E7402-50	DRIVE AXLE ASSY	1				UR
7	2GS-E7221-00	GEAR, 2ND WHEEL	1				
8	90201-22793	WASHER, PLATE	1				
9	93410-22039	CIRCLIP	2				
10	2GS-E7231-00	GEAR, 3RD WHEEL	1				
11	90209-18208	WASHER	1				
12	90201-178D3	WASHER, PLATE	2				
13	21C-E7258-00	COLLAR 1	1				
14	2GS-E7211-00	GEAR, 1ST WHEEL	1				
15	2GS-E7241-00	GEAR, 4TH WHEEL	1				
16	2GS-E7251-00	GEAR, 5TH WHEEL	1				
17	93306-203XR	BEARING	1				
18	93306-272X4	BEARING	1				UR
	93306-272X1	BEARING	1				UR
19	93102-22818	OIL SEAL	1				
20	93822-14800	SPROCKET, DRIVE (14T)	1				
21	4LS-E7456-00	HOLDER, SPROCKET	1				
22	95022-06010	BOLT, FLANGE	1				
23	21C-E5666-00	SPACER	1				
24	90201-178D3	WASHER, PLATE	1				
25	99009-17400	CIRCLIP	1				



2GS1470-P120

FIG. 13 (3J0) SHIFT CAM & FORK

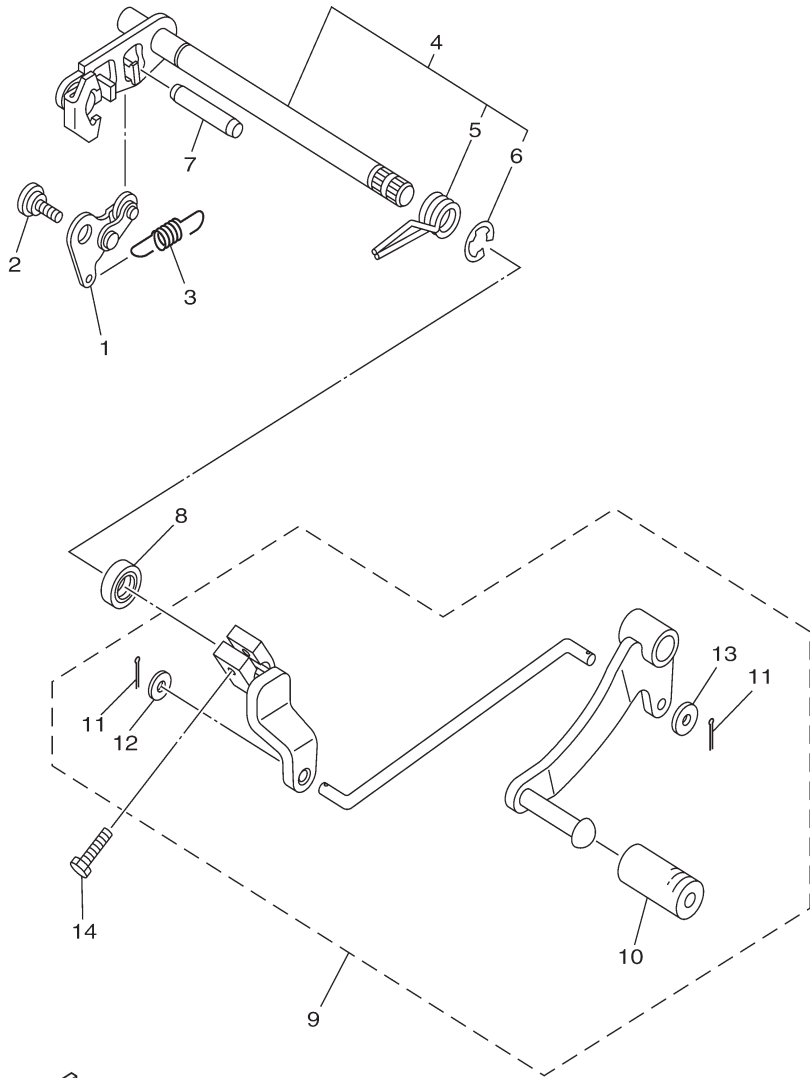


REF. NO.	PART NO.	PART NAME	2WS1				REMARKS
1	2GS-E8540-00	SHIFT CAM ASSY	1				
2	21C-E8511-00	FORK, SHIFT 1	1				
3	21C-E8512-00	FORK, SHIFT 2	1				
4	21C-E8513-00	FORK, SHIFT 3	1				
5	21C-E8531-00	BAR, SHIFT FORK GUIDE 1	1				
6	21C-E8535-00	BAR, SHIFT FORK GUIDE 2	1				
7	90501-06800	SPRING, COMPRESSION	4				



21C1470-G140

FIG. 14 (3K0) SHIFT SHAFT



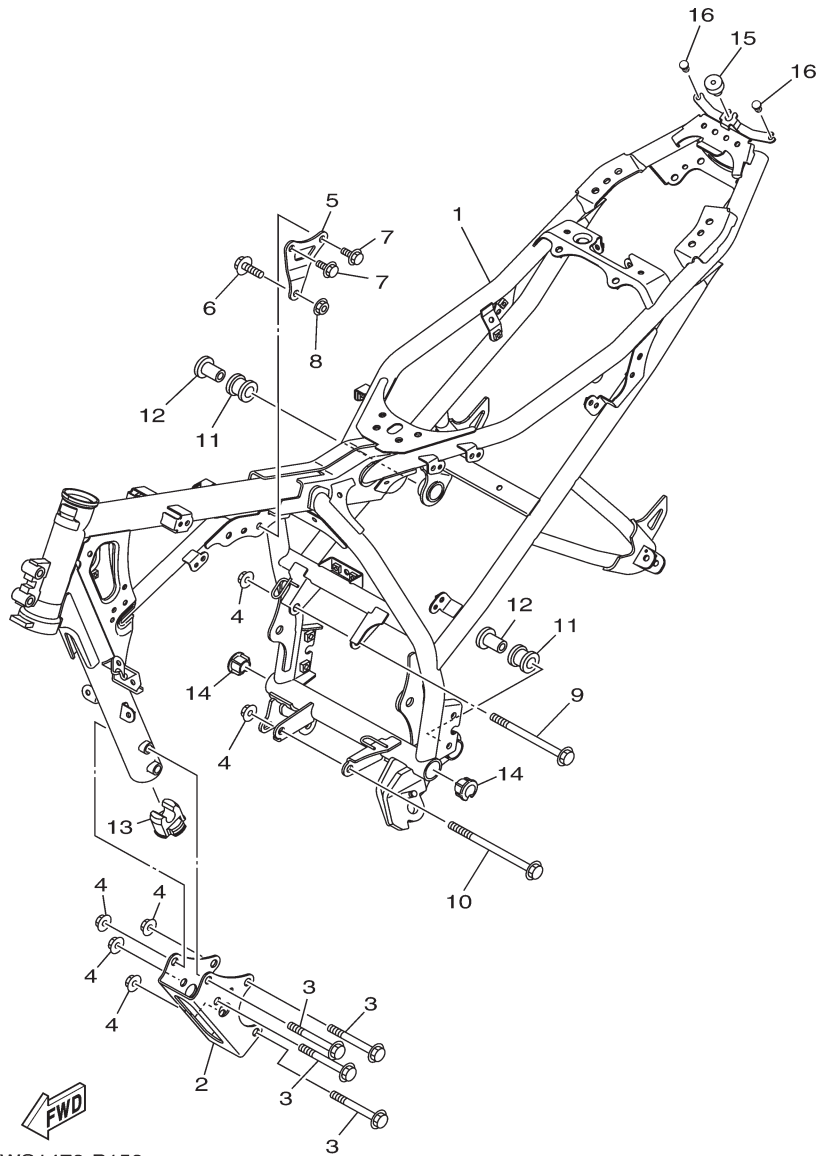
REF. NO.	PART NO.	PART NAME	2WS1				REMARKS
1	21C-E8140-00	STOPPER LEVER ASSY	1				
2	90109-06259	BOLT	1				
3	21C-E8337-00	SPRING	1				
4	21C-E8101-01	SHIFT SHAFT ASSY	1				
5	90508-32805	.SPRING, TORSION	1				
6	99001-10600	.CIRCLIP	1				
7	93608-43238	PIN, DOWEL	1				
8	93102-12875	OIL SEAL	1				
9	21C-E8110-10	SHIFT PEDAL ASSY	1				
10	20P-E8113-00	.COVER, SHIFT PEDAL	1				
11	91401-20012	.PIN, COTTER	2				
12	92902-06200	.WASHER	1				
13	90201-06871	.WASHER, PLATE	1				
14	97012-06020	BOLT	1				



21C1470-G152

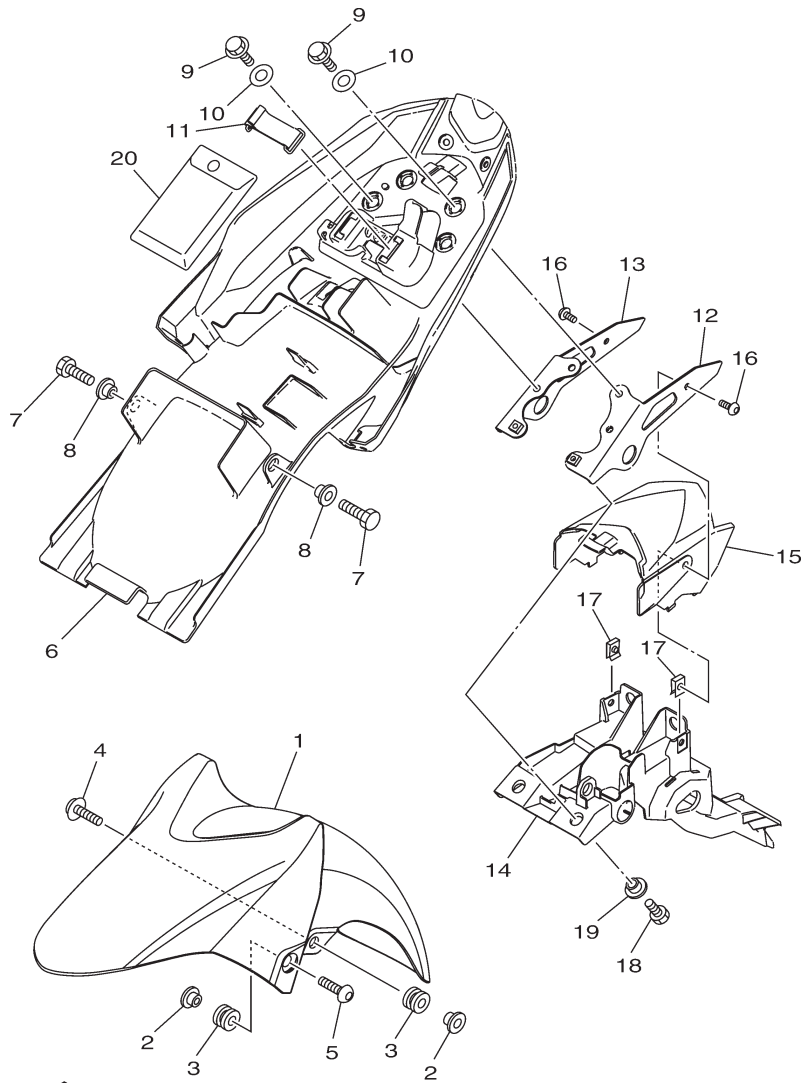
FIG. 15 (3M0) FRAME

REF. NO.	PART NO.	PART NAME	2WS1				REMARKS
1	2WS-F1110-00	FRAME COMP.	1				
2	2GS-F1316-00	STAY, ENGINE 2	1				
3	95812-10080	BOLT, FLANGE	4				
4	90179-10811	NUT	6				
5	2GS-F1317-00	STAY, ENGINE 3	1				
6	90105-08002	BOLT, FLANGE	1				
7	95812-08016	BOLT, FLANGE	2				
8	90179-08674	NUT	1				
9	95817-10130	BOLT, FLANGE	1				
10	90105-10861	BOLT, FLANGE	1				
11	20P-E4747-00	DAMPER, MUFFLER	2				
12	90387-08822	COLLAR	2				
13	21C-F1638-02	DAMPER 1	1				
14	2GS-F1279-00	PLUG, BLIND	2				
15	1PM-F4741-00	PAD, SEAT	1				
16	21C-F1717-00	DAMPER	2				



2WS1470-P150

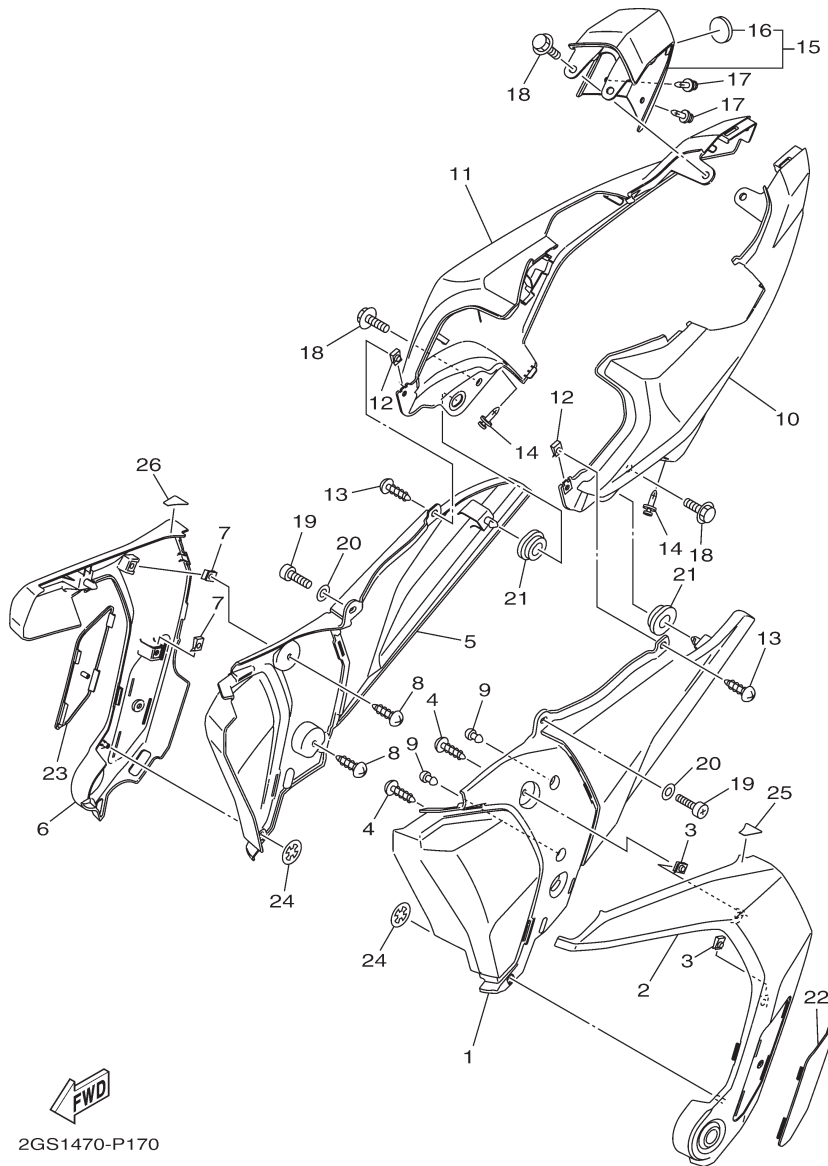
FIG. 16 (3Q0) FENDER



2GS1470-P160

REF. NO.	PART NO.	PART NAME	2WS1				REMARKS
1	21C-F1511-00-P2	FENDER, FRONT- VRC1 (Red)	1				VRC1 FOR YB
	21C-F1511-00-P5	FENDER, FRONT -Silver	1				S3 FOR VRC1
	21C-F1511-00-P6	FENDER, FRONT - DPBML (Blue)	1				DPBML FOR BWC1
2	90387-068C5	COLLAR	4				
3	90480-08801	GROMMET	4				
4	95802-06020	BOLT, FLANGE	2				
5	90111-06117	BOLT, HEX. SOCKET BUTTON	2				
6	2GS-F1611-00	FENDER, REAR	1				
7	97012-06014	BOLT	2				
8	90387-06048	COLLAR	2				
9	95822-06016	BOLT, FLANGE	4				
10	90387-08079	COLLAR	4				
11	4UU-F811G-00	BAND	1				
12	2GS-F1613-00	STAY, FENDER 1	1				
13	2GS-F1614-00	STAY, FENDER 2	1				
14	2GS-F1651-00	COVER, REAR FENDER	1				
15	2GS-F163A-00	COVER, REAR FENDER 1	1				
16	90149-06829	SCREW	2				
17	90183-06800	NUT, SPRING	2				
18	97012-06014	BOLT	2				
19	90387-06048	COLLAR	2				
20	21C-F8100-20	TOOL KIT	1				

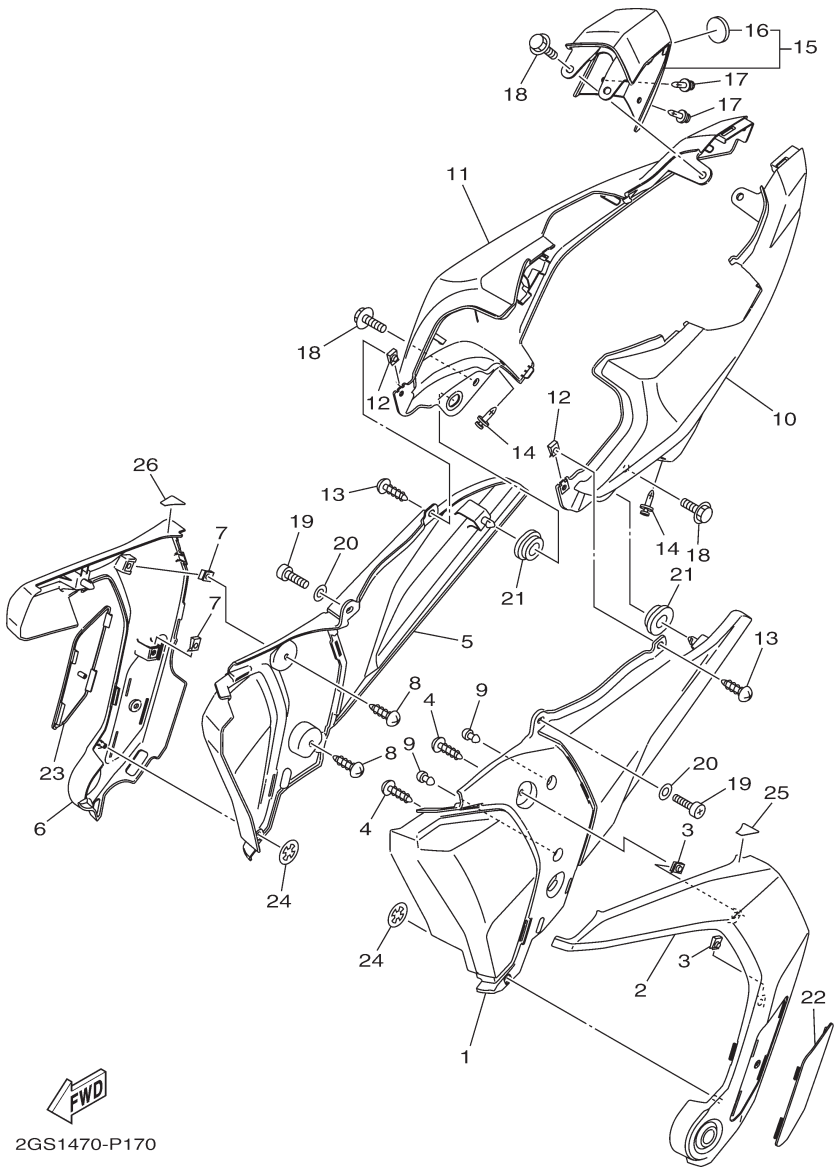
FIG. 17 (3U0) SIDE COVER



REF. NO.	PART NO.	PART NAME	2WS1				REMARKS
1	2GS-F1711-00	COVER, SIDE 1	1				
2	2GS-F172A-00-P0	PANEL 1 - S8 (Silver)	1				S8
3	90183-05807	NUT, SPRING	2				
4	97702-50012	SCREW, TAPPING	2				
5	2GS-F1721-00	COVER, SIDE 2	1				
6	2GS-F172F-00-P0	PANEL 2 - S8 (Silver)	1				S8
7	90183-05807	NUT, SPRING	2				
8	97702-50012	SCREW, TAPPING	2				
9	21C-F1717-00	DAMPER	2				
10	2GS-F1731-00-33	COVER, SIDE 3 -YB (Black)	1				FOR YB
	2GS-F1731-00-P0	COVER, SIDE 3 - VRC1(Red)	1				FOR VRC1
	2GS-F1731-00-P3	COVER, SIDE 3 - BWC1 (White)	1				FOR BWC1
11	2GS-F1741-00-33	COVER, SIDE 4 - YB (Black)	1				FOR YB
	2GS-F1741-00-P0	COVER, SIDE 4 - VRC1(Red)	1				FOR VRC1
	2GS-F1741-00-P3	COVER, SIDE 4 - BWC1 (White)	1				FOR BWC1
12	90183-05807	NUT, SPRING	2				
13	97702-50012	SCREW, TAPPING	2				
14	90269-06814	RIVET	2				
15	2GS-XF17C-00-P0	COVER, SIDE 5 -VRC1 (RED)	1				UR VRC1 FOR YB
	2GS-XF17C-00-P4	COVER, SIDE 5 - Silver	1				UR S3 FOR VRC1
	2GS-XF17C-00-P5	COVER, SIDE 5 - DPBML (Blue)	1				UR.DPBML FOR BWC1
16	5TS-F836B-02	.TUNING FORK MARK	1				
17	90269-06814	RIVET	2				
18	90119-06137	BOLT, WITH WASHER	4				
19	98502-06014	SCREW, PAN HEAD	2				
20	90201-06055	WASHER, PLATE	2				
21	90480-01558	GROMMET	2				
22	2GS-F171L-00	MOLE, SIDE COVER 1	1				

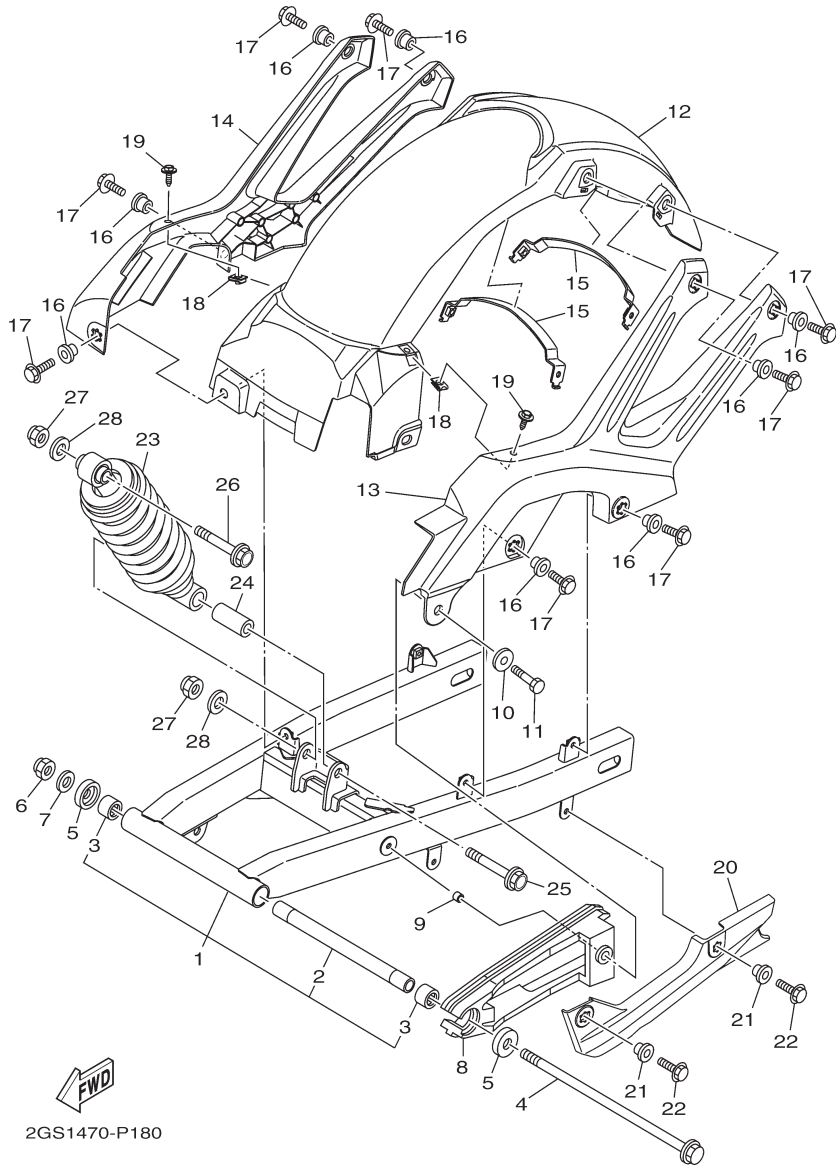
FIG. 17 (3U0) SIDE COVER

REF. NO.	PART NO.	PART NAME	2WS1				REMARKS
23	2GS-F171M-00	MOLE, SIDE COVER 2	1				
24	90183-05067	NUT, SPRING	2				
25	2GS-F1732-00	SEAL 1	1				
26	2GS-F1735-00	SEAL 2	1				



2GS1470-P170

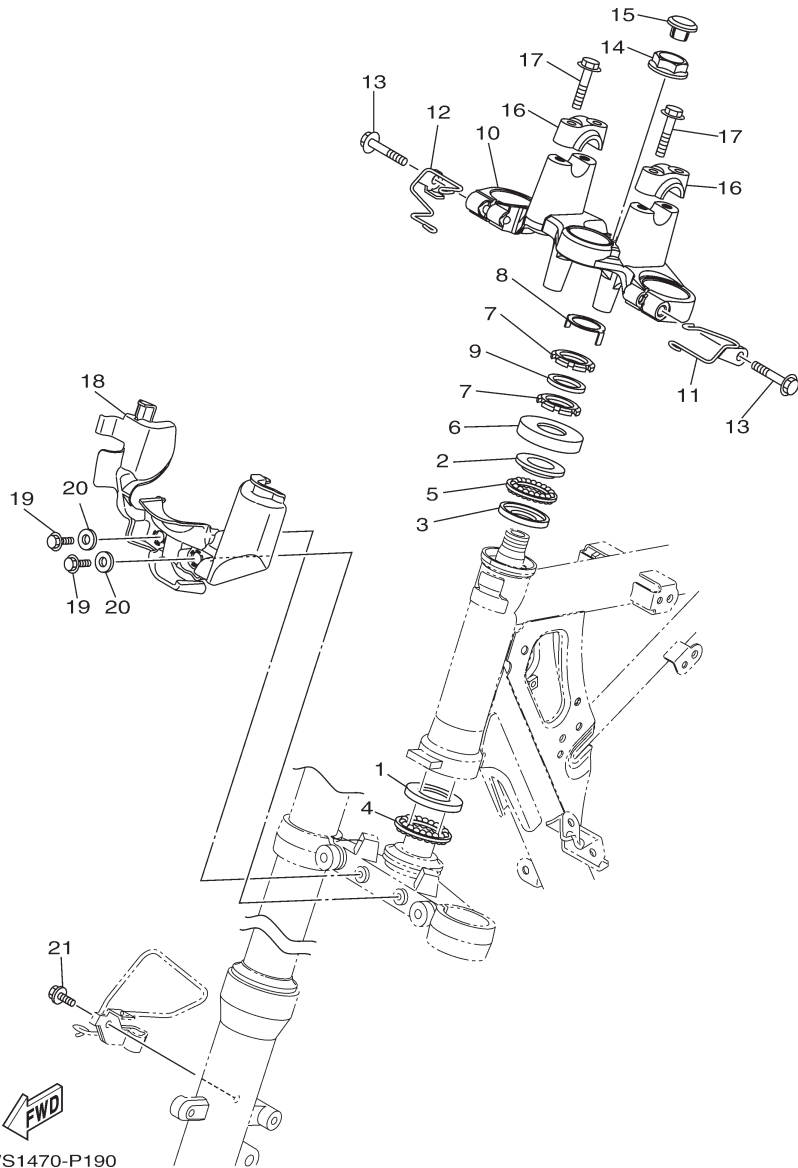
FIG. 18 (4A0) REAR ARM & SUSPENSION



2GS1470-P180

REF. NO.	PART NO.	PART NAME	2WS1				REMARKS
1	2GS-WF211-00	REAR ARM COMP.	1				
2	90387-12863	.COLLAR	1				
3	93317-318Y5	.BEARING	2				
4	2GS-F2141-00	SHAFT, PIVOT	1				
5	20P-F2129-00	COVER, THRUST 2	2				
6	95607-12200	NUT, SELFLOCKING	1				
7	90201-12028	WASHER, PLATE	1				
8	2GS-F2151-00	SEAL, GUARD	1				
9	90387-066J9	COLLAR	1				
10	90201-060A3	WASHER, PLATE	1				
11	95027-06016	BOLT, FLANGE	1				
12	2GS-F1650-00	REAR FENDER COMP.	1				
13	2GS-F1644-00	STAY, REAR	1				
14	2GS-F1645-00	STAY, REAR	1				
15	2GS-F164F-00	STAY 1	2				
16	90387-068N2	COLLAR	8				
17	95027-06016	BOLT, FLANGE	8				
18	90183-06800	NUT, SPRING	2				
19	90119-06060	BOLT, WITH WASHER	2				
20	21C-F2147-00	PROTECTOR, CHAIN	1				
21	90387-068S1	COLLAR	2				
22	95027-06016	BOLT, FLANGE	2				
23	2GS-F2210-00	SHOCK ABSORBER ASSY, REAR	1				
24	90387-12845	COLLAR	1				
25	90105-12057	BOLT, FLANGE	1				
26	90105-12804	BOLT, FLANGE	1				
27	95612-12100	NUT, U	2				
28	90201-122H1	WASHER, PLATE	2				

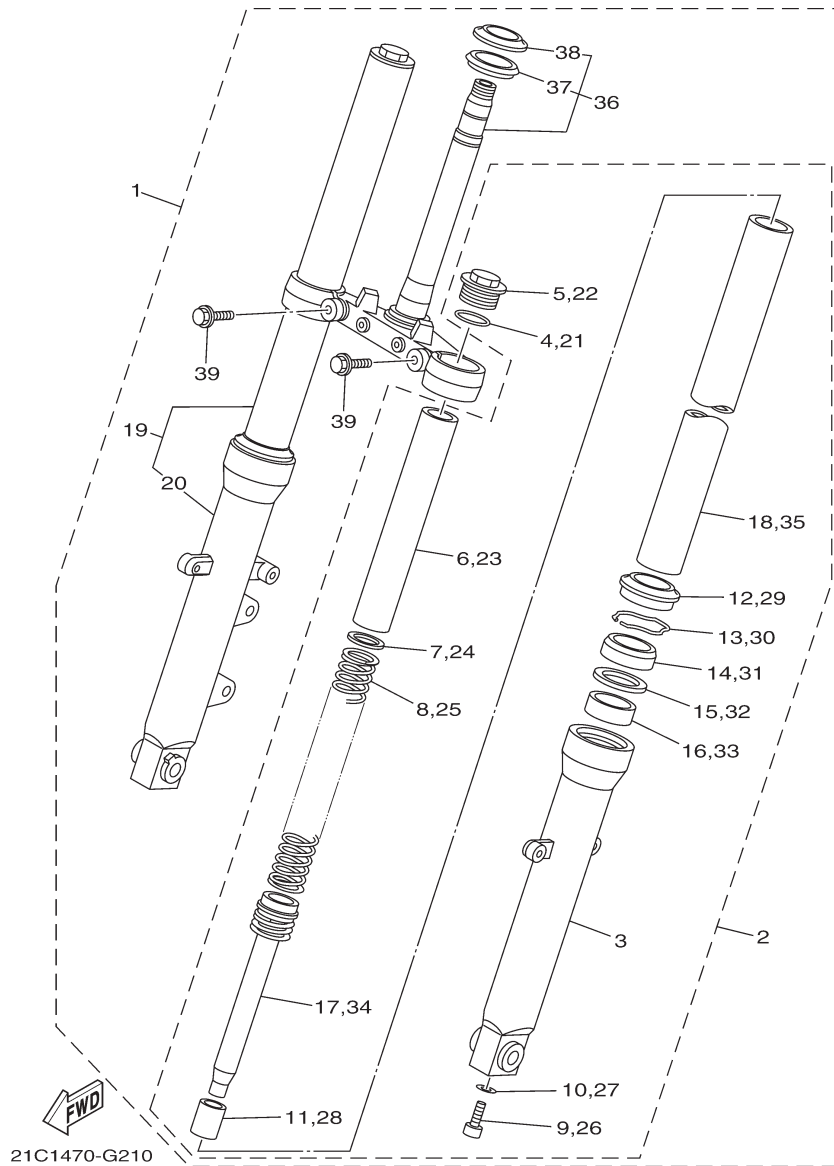
FIG. 19 (4H0) STEERING



2WS1470-P190

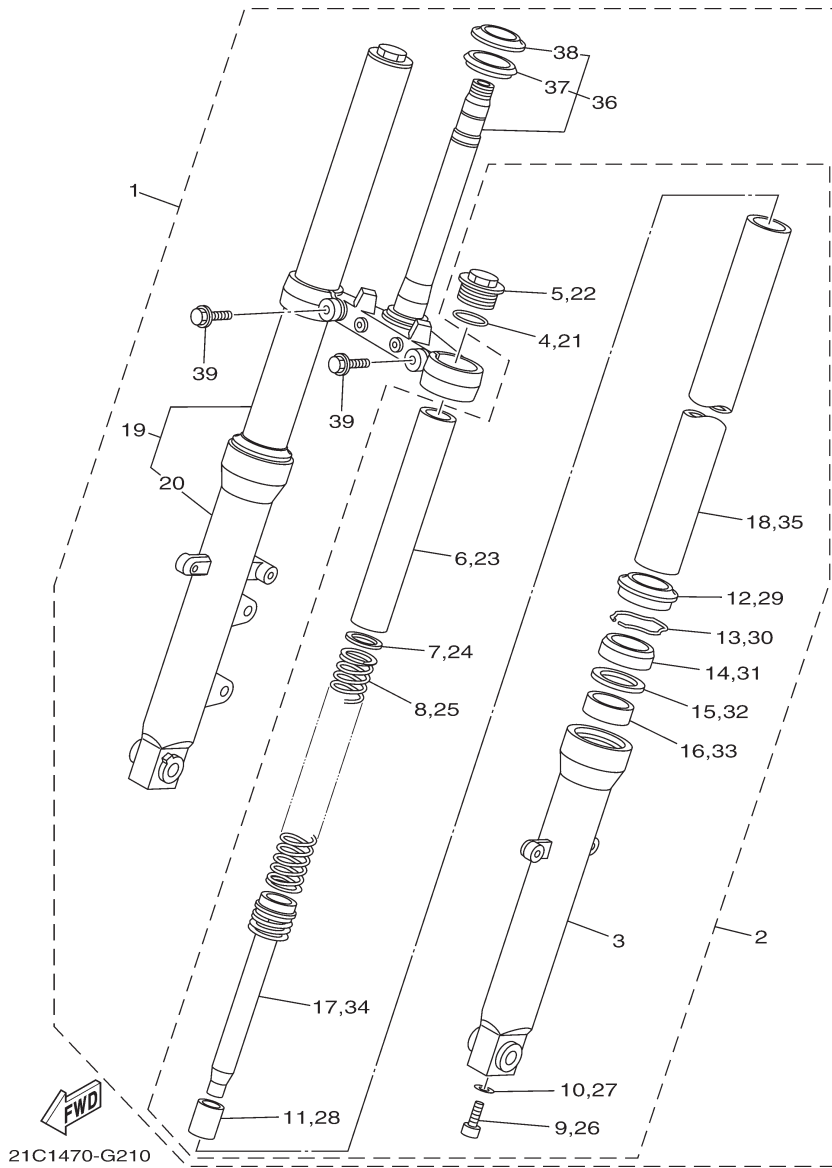
REF. NO.	PART NO.	PART NAME	2WS1				REMARKS
1	21C-F3412-00	RACE, BALL 2	1				
2	21C-F3413-00	RACE, BALL 3	1				
3	21C-F3414-00	RACE, BALL 4	1				
4	4LS-F341E-10	RETAINER, BALL BEARING	1				
5	4LS-F341E-00	RETAINER, BALL BEARING	1				
6	5YY-F3416-00	COVER, BALL RACE 2	1				
7	90179-25615	NUT	2				
8	20P-F3418-00	WASHER, SPECIAL	1				
9	90202-26142	WASHER, PLATE	1				
10	21C-F3435-00	CROWN, HANDLE	1				
11	45S-F6131-00	GUIDE, CABLE 1	1				
12	45S-F6132-00	GUIDE, CABLE 2	1				
13	95022-08040	BOLT, FLANGE	2				
14	90179-22025	NUT	1				
15	2GS-F3438-00	CAP, END	1				
16	21C-F3441-00	HOLDER, HANDLE UPPER	2				
17	95022-08035	BOLT, FLANGE	4				
18	2WS-F317F-00	STAY 2	1				
19	95822-06016	BOLT, FLANGE	2				
20	90387-07819	COLLAR	2				
21	95812-06012	BOLT, FLANGE	1				

FIG. 20 (4K0) FRONT FORK



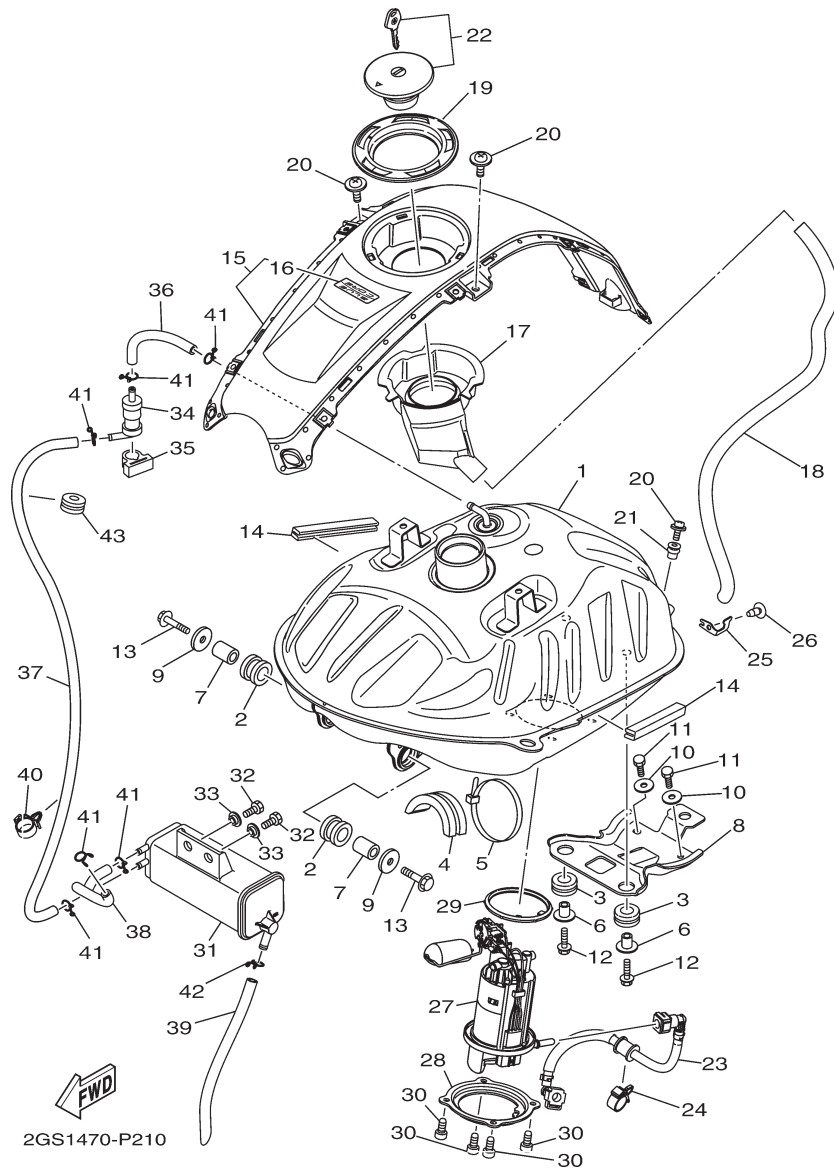
REF. NO.	PART NO.	PART NAME	2WS1				REMARKS
1	2GS-F3100-00	FRONT FORK ASSY	1				
2	2GS-F3102-00	..FRONT FORK ASSY (L.H)	1				
3	21C-F3126-01	..TUBE, OUTER (L.H)	1				
4	21C-F3114-00	..GASKET	1				
5	21C-F3111-00	..BOLT, CAP	1				
6	21C-F3118-00	..SPACER	1				
7	21C-F3149-00	..WASHER, SPRING UPPER	1				
8	21C-F3141-00	..SPRING, FRONT FORK	1				
9	21C-F3181-00	..BOLT, HEXAGON SOCKET HEAD	1				
10	21C-F3158-00	..GASKET	1				
11	21C-F3173-00	..SPINDLE, TAPER	1				
12	2GS-F3144-00	..SEAL, DUST	1				
13	21C-F3156-00	..RING, SNAP	1				
14	2GS-F3145-00	..OIL SEAL	1				
15	21C-F3146-00	..WASHER, OIL SEAL	1				
16	4FM-23125-40	..METAL, SLIDE 1	1				
17	2GS-F3170-00	..CYLINDER COMP., FRONT FORK	1				
18	21C-F3110-00	..INNER TUBE COMP.1	1				
19	2GS-F3103-00	..FRONT FORK ASSY (R.H)	1				
20	21C-F3136-01	..TUBE, OUTER	1				
21	21C-F3114-00	..GASKET	1				
22	21C-F3111-00	..BOLT, CAP	1				
23	21C-F3118-00	..SPACER	1				
24	21C-F3149-00	..WASHER, SPRING UPPER	1				
25	21C-F3141-00	..SPRING, FRONT FORK	1				
26	21C-F3181-00	..BOLT, HEXAGON SOCKET HEAD	1				
27	21C-F3158-00	..GASKET	1				
28	21C-F3173-00	..SPINDLE, TAPER	1				
29	2GS-F3144-00	..SEAL, DUST	1				
30	21C-F3156-00	..RING, SNAP	1				

FIG. 20 (4K0) FRONT FORK



REF. NO.	PART NO.	PART NAME	2WS1				REMARKS
31	2GS-F3145-00	..OIL SEAL	1				
32	21C-F3146-00	..WASHER, OIL SEAL	1				
33	4FM-23125-40	..METAL, SLIDE 1	1				
34	2GS-F3170-00	..CYLINDER COMP., FRONT FORK	1				
35	21C-F3110-00	..INNER TUBE COMP.1	1				
36	21C-F3340-02	..UNDER BRACKET COMP.	1				
37	5YY-F3462-00	..SEAL, DUST	1				
38	21C-F3411-00	..RACE, BALL 1	1				
39	21C-F3346-00	..BOLT 1	2				

FIG. 21 (4S0) FUEL TANK



REF. NO.	PART NO.	PART NAME	2WS1				REMARKS
1	2GS-F4110-00	FUEL TANK COMP.	1				
2	21C-F4181-00	DAMPER, LOCATING 1	2				
3	90480-15363	GROMMET	2				
4	21C-F4183-00	DAMPER, LOCATING 3	1				
5	90464-80802	CLAMP	1				
6	90387-068B2	COLLAR	2				
7	90387-107H6	COLLAR	2				
8	2GS-F4191-00	BRACKET, FUEL TANK 1	1				
9	90201-060A3	WASHER, PLATE	2				
10	90201-06380	WASHER PLAIN	2				
11	97012-06014	BOLT	2				
12	90105-06169	BOLT, FLANGE	2				
13	95822-06030	BOLT, FLANGE	2				
14	21C-F4188-10	MOLD, FUEL TANK	2				
15	2GS-XF17D-00-P0	COVER, TOP -VRC1 (Red)	1				VRC1 FOR YB
	2GS-XF17D-00-P4	COVER, TOP (Silver)	1				S3 FOR VRC1
	2GS-XF17D-00-P5	COVER, TOP - DPBML (Blue)	1				DPBML FOR BWC1
16	2GS-F4549-00	.EMBLEM	1				
17	2GS-F414A-00	COVER, FILLER	1				
18	90445-14808	HOSE	1				
19	21C-F4614-00-P0	PLATE, CAP	1				S8
20	90159-05065	SCREW, WITH WASHER	3				
21	90179-05804	NUT	1				
22	21C-WF461-20	CAP ASSY WITH LOCK	1				
23	2GS-E3971-00	PIPE, FUEL 1	1				
24	90464-16006	CLAMP	1				
25	2GS-F4364-00	STAY	1				
26	97702-50012	SCREW, TAPPING	1				
27	2GS-E3907-00	FUEL PUMP COMP.	1				
28	2GS-F4491-00	BRACKET, FUEL PUMP	1				

FIG. 21 (4S0) FUEL TANK

REF. NO.	PART NO.	PART NAME	2WS1				REMARKS
29	2GS-F414G-00	SEAL	1				
30	91312-05010	BOLT	4				
31	2GS-F4170-00	CANISTER ASSY	1				
32	97012-06014	BOLT	2				
33	90387-06048	COLLAR	2				
34	2GS-F4180-00	ROLL OVER VALVE ASSY	1				
35	2GS-F419A-00	HOLDER	1				
36	2GS-F4312-00	PIPE 2	1				
37	2GS-F4313-00	PIPE 3	1				
38	2GS-F4314-00	PIPE 4	1				
39	2GS-F4315-00	PIPE 5	1				
40	90464-16006	CLAMP	1				
41	90467-09006	CLIP	6				
42	90467-100A1	CLIP	1				
43	90480-15363	GROMMET	1				

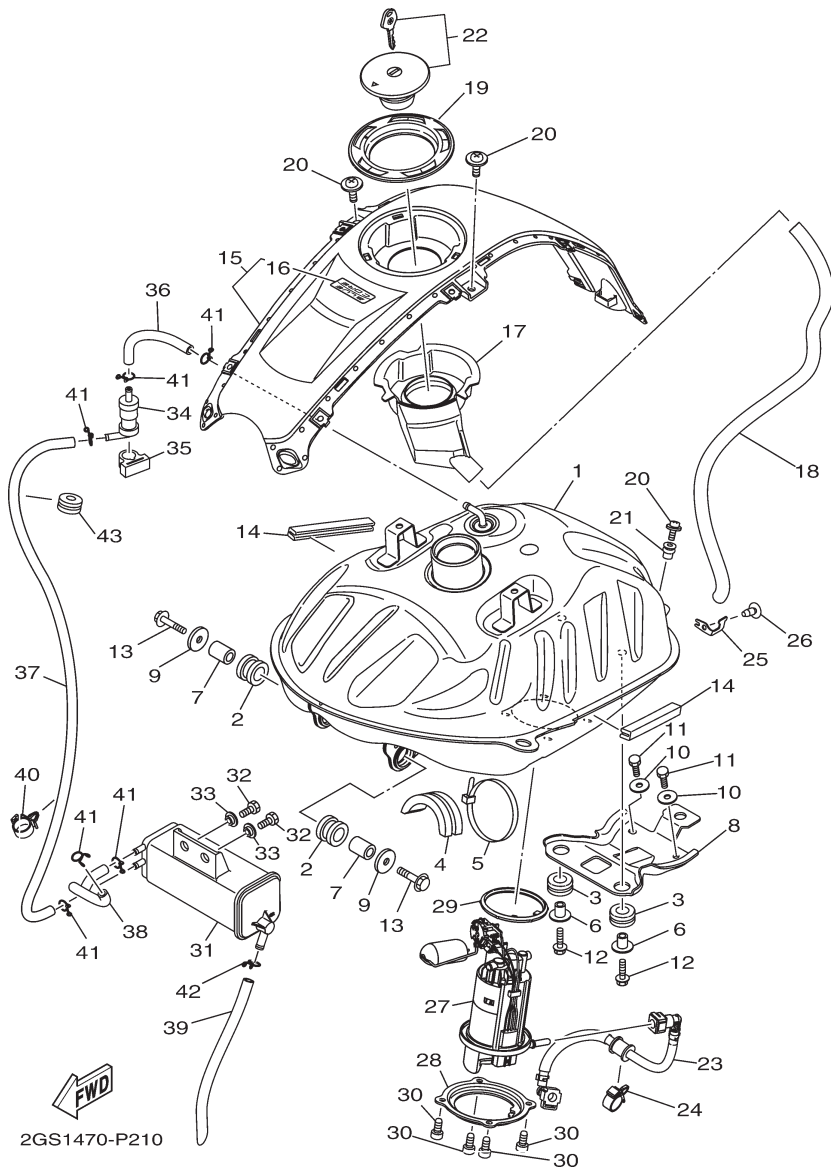
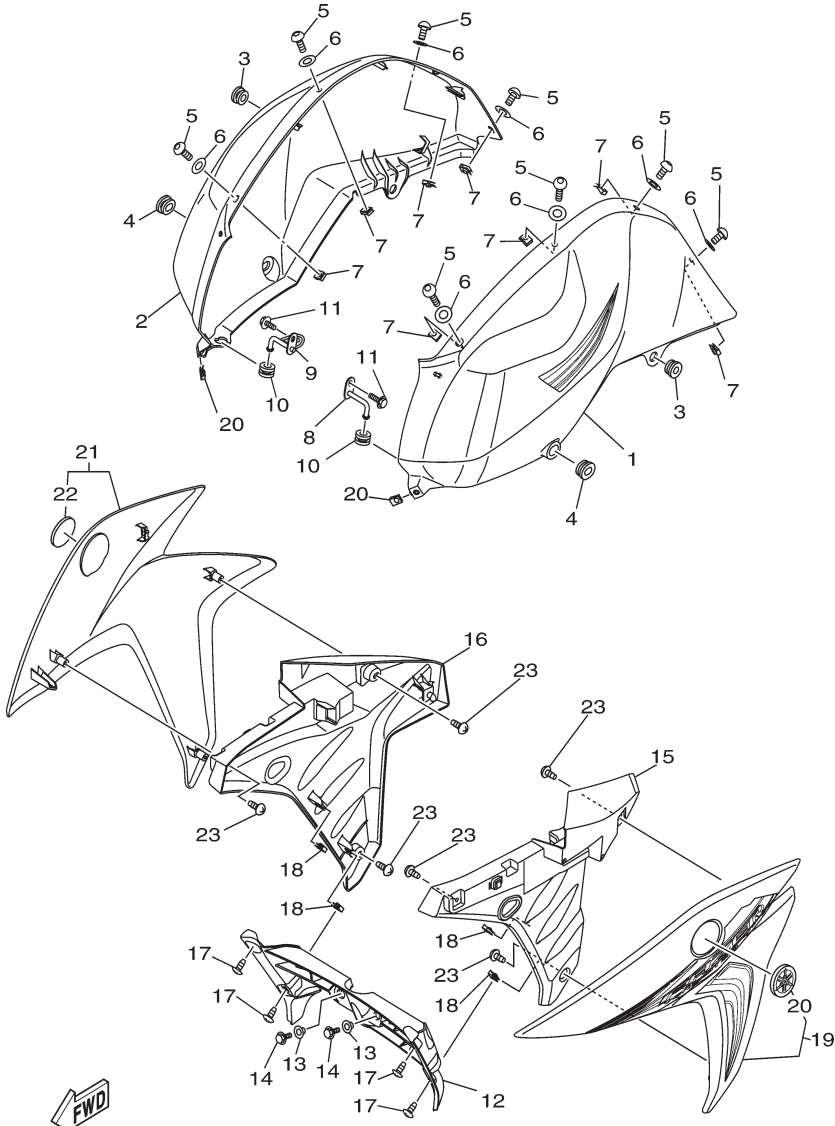


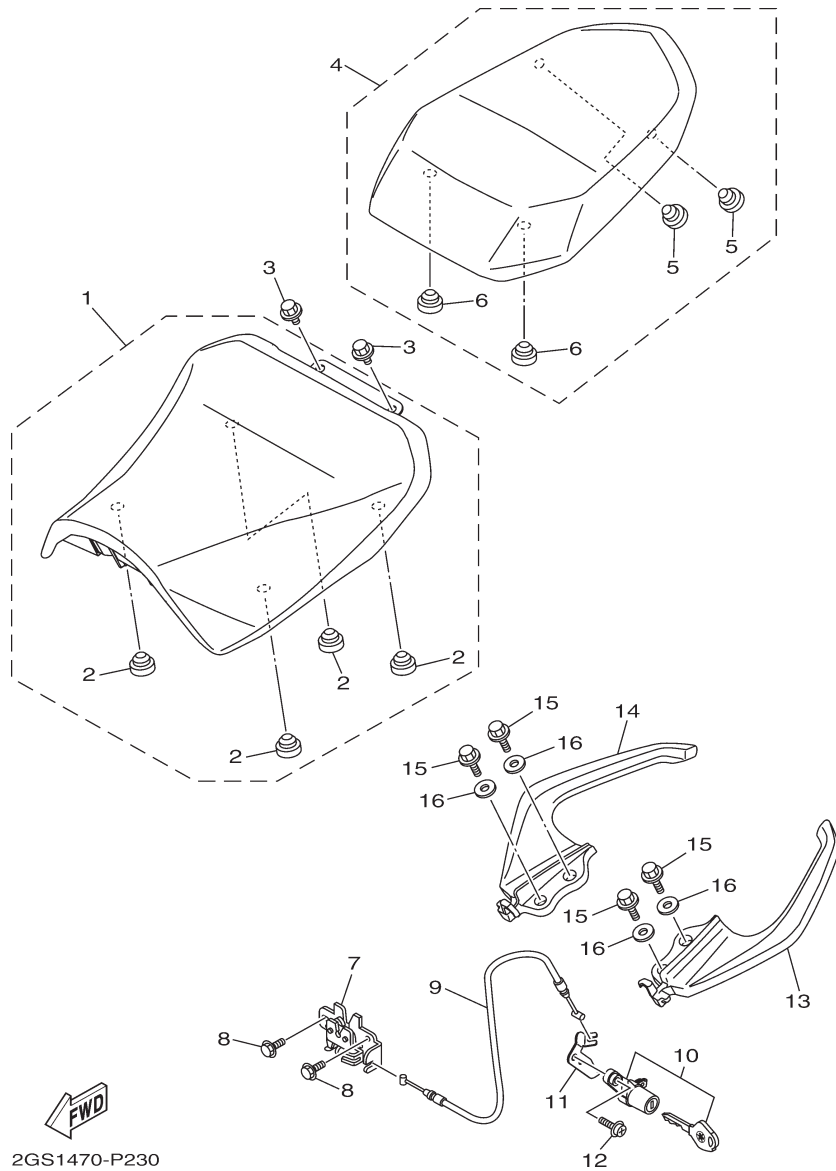
FIG. 22 (4S1) FUEL TANK 2

REF. NO.	PART NO.	PART NAME	2WS1				REMARKS
1	2WS-XF412-00-33	TANK SIDE COVER 1 - YB (Black)	1				UR FOR YB
	2WS-XF412-10-P0	TANK SIDE COVER 1 - VRC1 (Red)	1				UR FOR VRC1
	2WS-XF412-20-P1	TANK SIDE COVER 1 - BWC1 (White)	1				UR FOR BWC1
2	2WS-XF413-00-33	TANK SIDE COVER 2 - YB (Black)	1				UR FOR YB
	2WS-XF413-10-P0	TANK SIDE COVER 2 - VRC1 (Red)	1				UR FOR VRC1
	2WS-XF413-20-P1	TANK SIDE COVER 2 - BWC1 (White)	1				UR FOR BWC1
3	90480-13398	GROMMET	2				
4	90480-01559	GROMMET	2				
5	90160-05812	SCREW, ROUND TAPPING	8				
6	90202-05180	WASHER, PLATE	8				
7	90183-05807	NUT, SPRING	8				
8	45S-F411G-00	HOOK, SIDE COVER 1	1				
9	45S-F411H-00	HOOK, SIDE COVER 2	1				
10	45S-F411J-00	DAMPER, SIDE COVER	2				
11	95802-06012	BOLT, FLANGE	2				
12	2WS-F4124-00	AIR SHROUD	1				
13	90387-06048	COLLAR	2				
14	95827-06012	BOLT, FLANGE	2				
15	2WS-F137U-00	GUIDE, AIR 1	1				
16	2WS-F137V-00	GUIDE, AIR 2	1				
17	97702-50012	SCREW, TAPPING	4				
18	90183-05807	NUT, SPRING	4				
19	2WS-XF836-00-P0	PANEL COMP 1 - VRC1 (Red)	1				UR VRC1 FOR YB
	2WS-XF836-10-P1	PANEL COMP 1 - Silver	1				UR S3 FOR VRC1
	2WS-XF836-20-P2	PANEL COMP 1 - DPBML (Blue)	1				UR DPBML FOR BWC1
20	5KA-F413B-00	.EMBLEM	1				
21	2WS-XF83G-00-P0	PANEL COMP 2 - VRC1 (Red)	1				UR VRC1 FOR YB
	2WS-XF83G-10-P1	PANEL COMP 2 - Silver	1				UR S3 FOR VRC1
	2WS-XF83G-20-P2	PANEL COMP 2 - DPBML (Blue)	1				UR DPBML FOR BWC1
22	5KA-F413B-00	.EMBLEM	1				
23	97702-50012	SCREW, TAPPING	6				
26							



2WS1470-P220

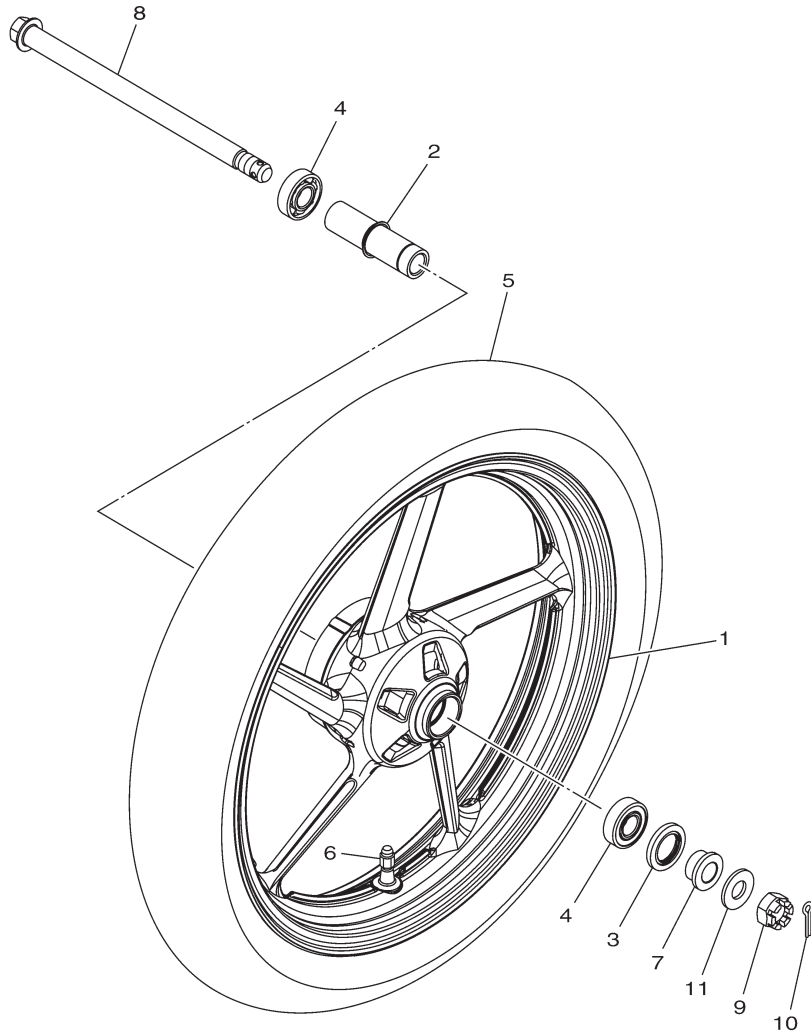
FIG. 23 (4U0) SEAT



2GS1470-P230

REF. NO.	PART NO.	PART NAME	2WS1				REMARKS
1	2GS-F4710-00	SINGLE SEAT ASSY	1				
2	1PM-F4741-00	.PAD, SEAT	4				
3	95022-08012	BOLT, FLANGE	2				
4	2GS-F4750-00	TANDEM SEAT ASSY	1				
5	2GS-F4741-00	.PAD, SEAT	2				
6	4LS-F4741-00	.PAD, SEAT	2				
7	21C-F4780-01	SEAT LOCK ASSY	1				
8	95022-06010	BOLT, FLANGE	2				
9	2GS-F478E-00	CABLE, SEAT LOCK	1				
10	21C-WF479-00	ROTOR SUB ASSY WITH KEY	1				
11	2GS-F117K-00	STAY, LOCK	1				
12	90159-06054	SCREW, WITH WASHER	1				
13	2GS-F474A-00	ASSIST, GRIP	1				
14	2GS-F474W-00	ASSIST, GRIP 2	1				
15	95812-08025	BOLT, FLANGE	4				
16	92902-08200	WASHER	4				

FIG. 24 (4W0) FRONT WHEEL

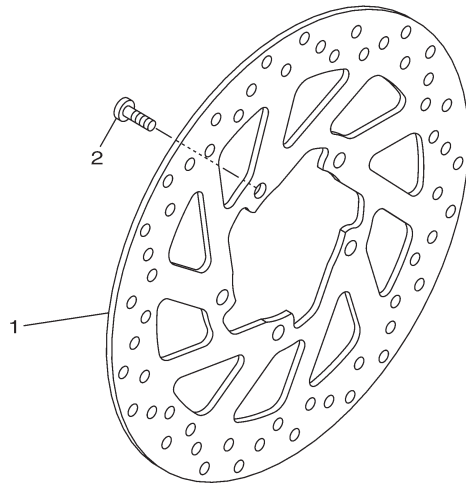
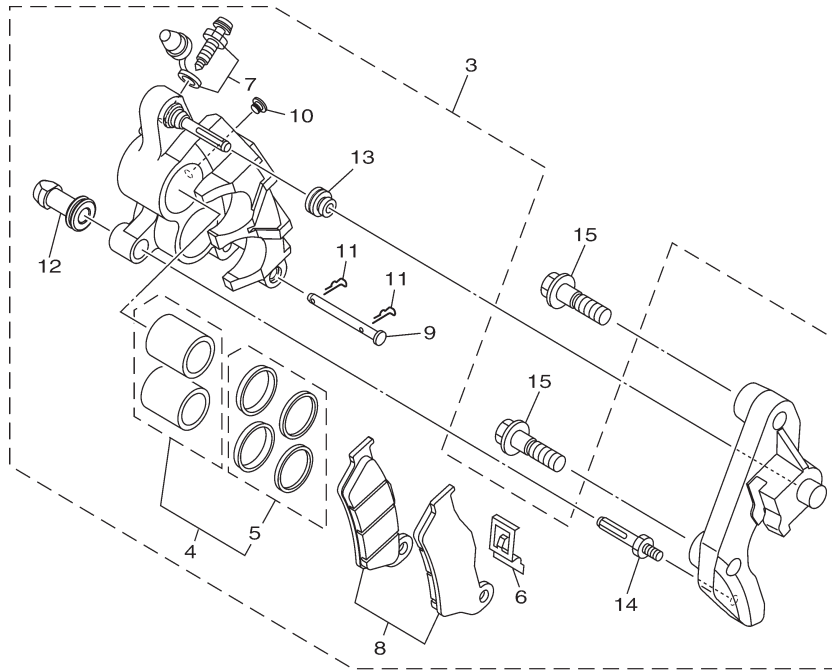


REF. NO.	PART NO.	PART NAME	2WS1				REMARKS
1	21C-F5168-20-33	CAST WHEEL, FRONT	1				YB
2	21C-F510C-10	COLLAR ASSY.	1				
3	93106-22808	OIL SEAL	1				
4	93306-252XG	BEARING	2				UR
	93306-252YH	BEARING	2				UR
5	94110-17818	TIRE (100/8017 MC 52P)	1				MRF
6	93900-00824	VALVE, RIM	1				
7	21C-F5183-01	COLLAR, WHEEL	1				
8	2GS-F5181-00	AXLE, WHEEL	1				
9	90171-14800	NUT, CASTLE	1				
10	90252-55800	PIN, COTTER	1				
11	92902-14200	WASHER	1				



2GS1470-P240

FIG. 25 (4X0) FRONT BRAKE CALIPER

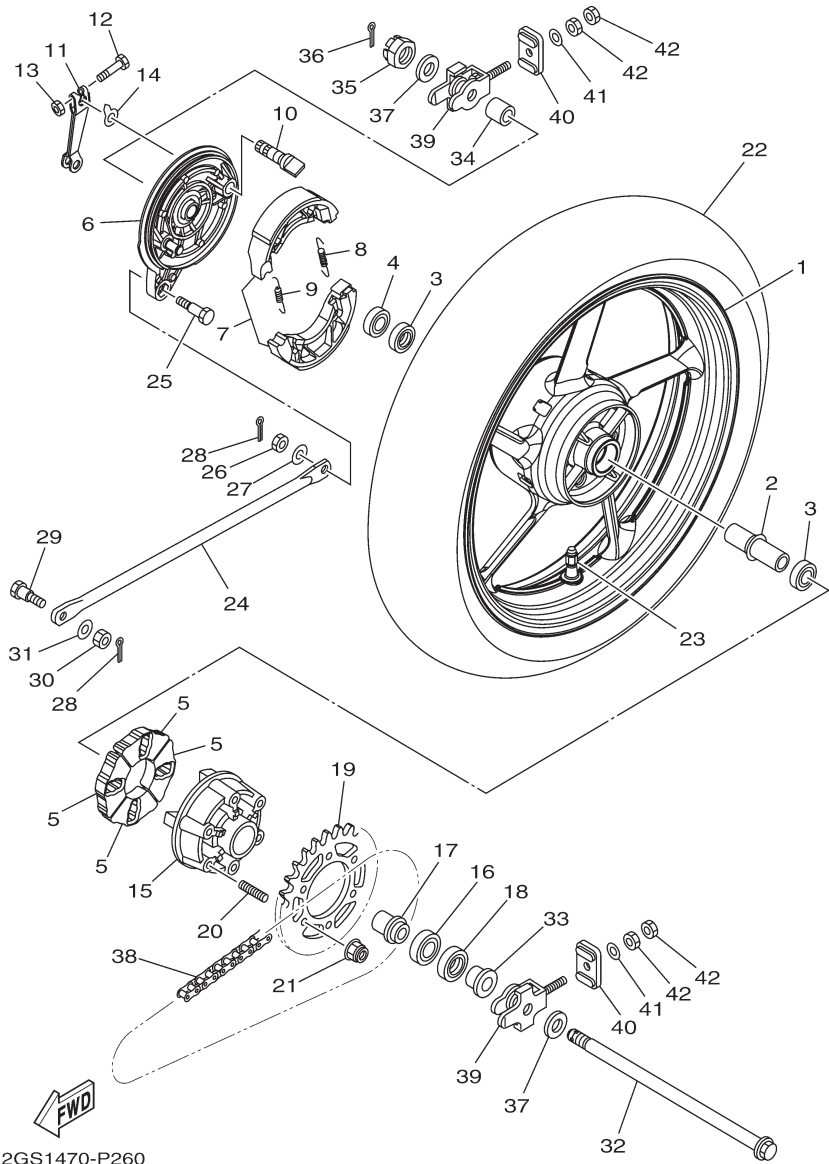


2GS1470-P250

REF. NO.	PART NO.	PART NAME	2WS1				REMARKS
1	21C-F582U-00	DISK, BRAKE (RIGHT)	1				
2	90111-08029	BOLT,HEX. SOCKET BUTTON	5				
3	2GS-F580U-00	CALIPER ASSY (RIGHT)	1				
4	54B-W0057-00	.PISTONASSY, CALIPER	1				
5	54B-W0047-00	.CALIPER SEAL KIT	1				
6	54B-F5919-00	.SUPPORT, PAD	1				
7	54B-W0048-00	.BLEED SCREW KIT	1				
8	2GS-W0045-00	.BRAKE PAD KIT	1				
9	54B-F5924-00	.PIN, PAD	1				
10	54B-F5916-00	.PLUG	1				
11	54B-F5925-00	.CLIP	2				
12	54B-F5937-00	.BOOT 2	1				
13	54B-F5917-00	.BOOT, CALIPER	1				
14	54B-F5926-00	.BOLT	1				
15	90105-10319	BOLT, FLANGE	2				

FIG. 26 (4Y0) REAR WHEEL

REF. NO.	PART NO.	PART NAME	2WS1				REMARKS
1	21C-F5338-20-33	CAST WHEEL, REAR	1				YB
2	21C-F530S-10	COLLAR ASSY	1				
3	93306-252XG	BEARING	2				UR
	93306-252YH	BEARING	2				UR
4	93106-22808	OIL SEAL	1				
5	21C-F5364-00	DAMPER	4				
6	5US-F5321-10	PLATE, BRAKE SHOE	1				
7	5YY-WF533-00	BRAKE SHOE KIT	1				
8	90506-12001	SPRING, TENSION	1				
9	90506-15001	SPRING, TENSION	1				
10	5YY-F5351-00	CAMSHAFT	1				
11	21C-F5355-01	LEVER, CAMSHAFT	1				
12	90101-06046	BOLT	1				
13	95307-06600	NUT	1				
14	36L-F533A-00	PLATE, INDICATOR	1				
15	20P-F5366-00-33	CLUTCH, HUB	1				YB
16	93306-054YA	BEARING	1				UR
	93306-054Y5	BEARING	1				UR
17	20P-F5377-00	COLLAR, WHEEL	1				
18	93106-26801	OIL SEAL	1				
19	2GS-F5441-00	SPROCKET, DRIVEN (41T)	1				
20	90116-08826	BOLT, STUD	6				
21	95602-08200	NUT, SELFLOCKING	6				
22	94114-17801	TIRE (140/60 R17 MC 63P)	1				MRF
23	93900-00824	VALVE, RIM	1				
24	21C-F5371-00	BAR, TENSION	1				
25	90109-08063	BOLT	1				
26	95302-08700	NUT	1				
27	90201-08326	WASHER, PLATE	1				
28	91401-20012	PIN, COTTER	2				
30							



2GS1470-P260

FIG. 26 (4Y0) REAR WHEEL

REF. NO.	PART NO.	PART NAME	2WS1				REMARKS
29	90109-08831	BOLT	1				
30	95302-08600	NUT	1				
31	92902-08200	WASHER	1				
32	2GS-F5381-00	AXLE, WHEEL	1				
33	21C-F5377-01	COLLAR, WHEEL	1				
34	21C-F5383-10	COLLAR, WHEEL	1				
35	90171-14800	NUT, CASTLE	1				
36	90252-55800	PIN, COTTER	1				
37	90201-15814	WASHER, PLATE	2				
38	94568-B5128	CHAIN (R428HBSX1282)	1				
39	21C-F5388-11	PULLER, CHAIN 1	2				
40	21C-F2174-00	END 1	2				
41	92902-08600	WASHER, PLATE	2				
42	95302-08600	NUT	4				

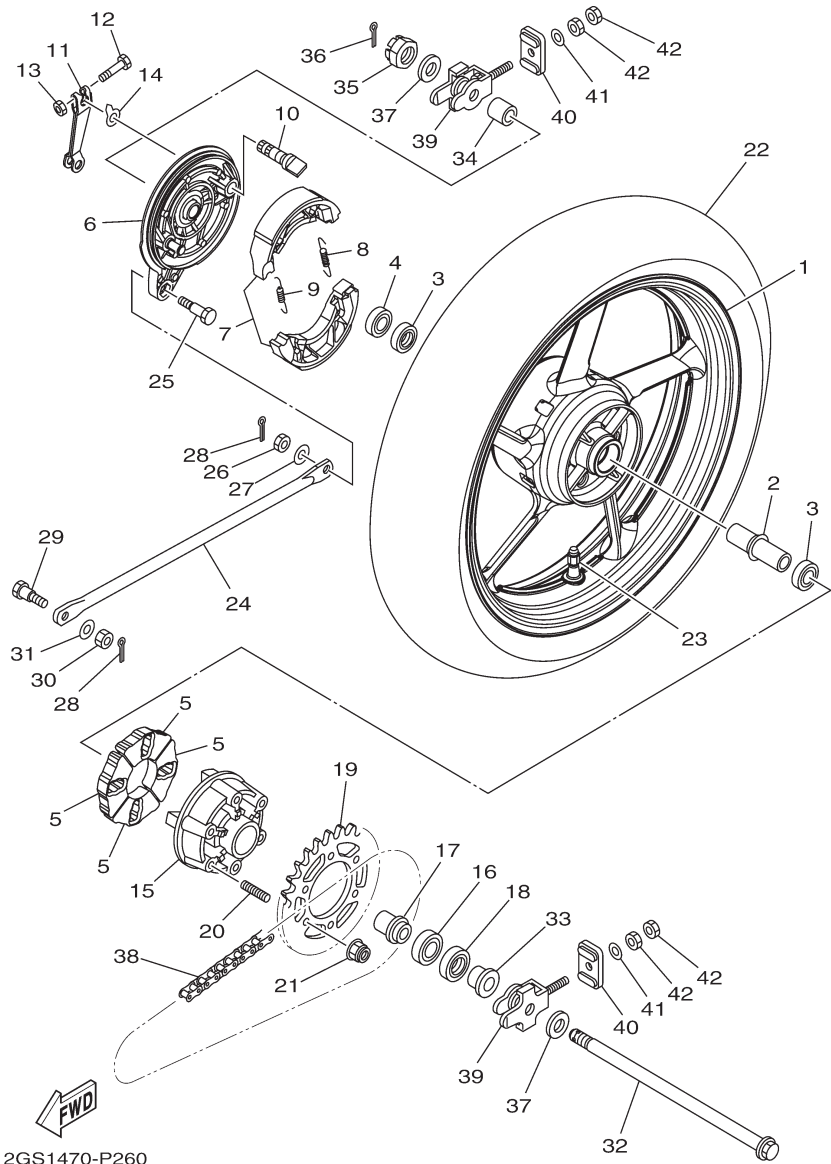
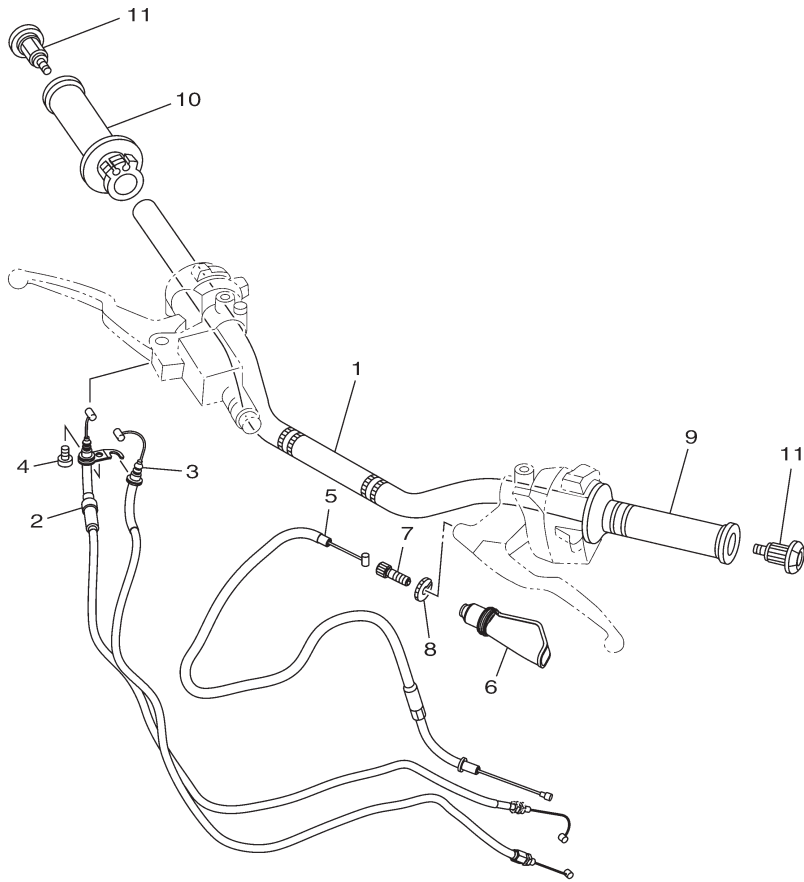


FIG. 27 (5B0) STEERING HANDLE & CABLE

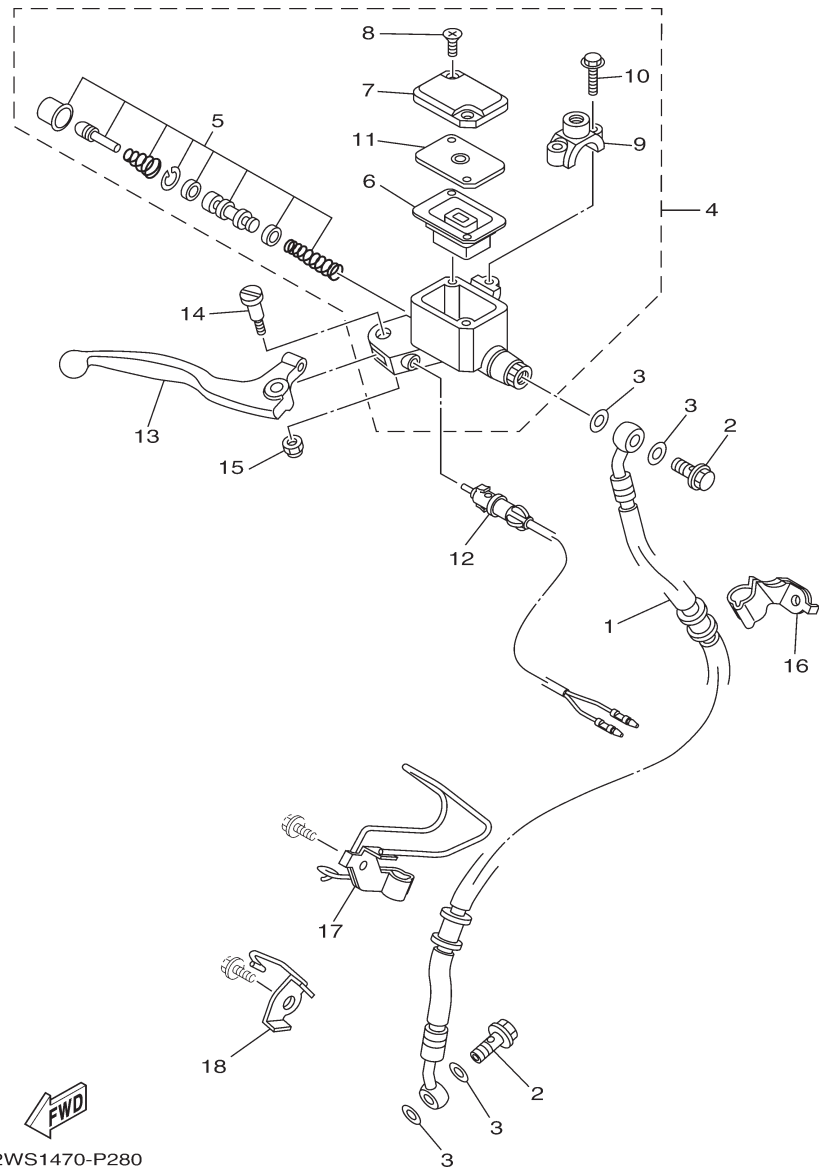


REF. NO.	PART NO.	PART NAME	2WS1				REMARKS
1	45S-F6111-01	HANDLEBAR	1				
2	2GS-F6311-00	CABLE, THROTTLE 1	1				
3	2GS-F6312-00	CABLE, THROTTLE 2	1				
4	98507-05012	SCREW, PAN HEAD	1				
5	21C-F6335-01	CABLE, CLUTCH	1				
6	4TL-F6372-00	COVER, HANDLE LEVER 1	1				
7	90123-08046	BOLT	1				
8	90179-08148	NUT	1				
9	21C-F6241-00	GRIP	1				
10	21C-F6240-10	GRIP ASSY	1				
11	21C-F620B-21	END GRIP ASSY	2				



2GS1470-P270

FIG. 28 (5C0) FRONT MASTER CYLINDER

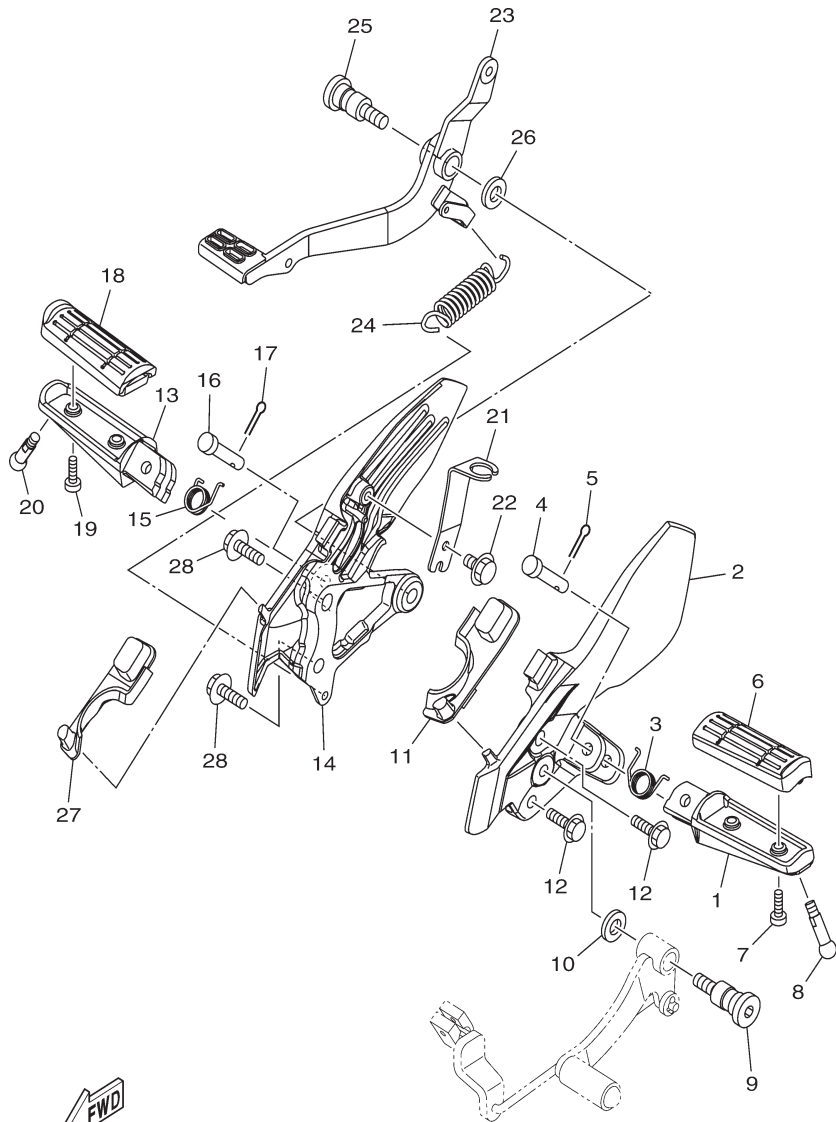


REF. NO.	PART NO.	PART NAME	2WS1				REMARKS
1	45S-F5875-00	HOLDER, BRAKE HOSE 1	1				
2	21C-F5872-00	HOSE, BRAKE 1	1				
3	90401-10818	BOLT, UNION	2				
4	90201-10815	WASHER, PLATE	4				
5	54B-WF587-00	MASTER CYLINDER SUB ASSY	1				
6	54B-W0041-00	.CYLINDER KIT, MASTER	1				
7	54B-F5854-00	.DIAPHRAGM, RESERVOIR	1				
8	54B-F5852-00	.CAP, RESERVOIR	1				
9	54B-F589H-00	.SCREW	2				
10	5YY-F5867-00	.BRACKET, MASTER CYLINDER	1				
11	90105-06859	.BOLT, FLANGE	2				
12	54B-F5855-00	.BUSH,DIAPHRAGM	1				
13	54B-H3980-01	FRONT STOP SWITCH ASSY	1				
14	54B-H3922-00	LEVER 2	1				
15	90109-06859	BOLT	1				
16	54B-F6338-00	NUT, ADJUSTING	1				
17	45S-F5876-00	HOLDER, BRAKE HOSE 2	1				
18	21C-F3317-00	HOLDER, CABLE	1				



2WS1470-P280

FIG. 29 (5F0) STAND & FOOTREST



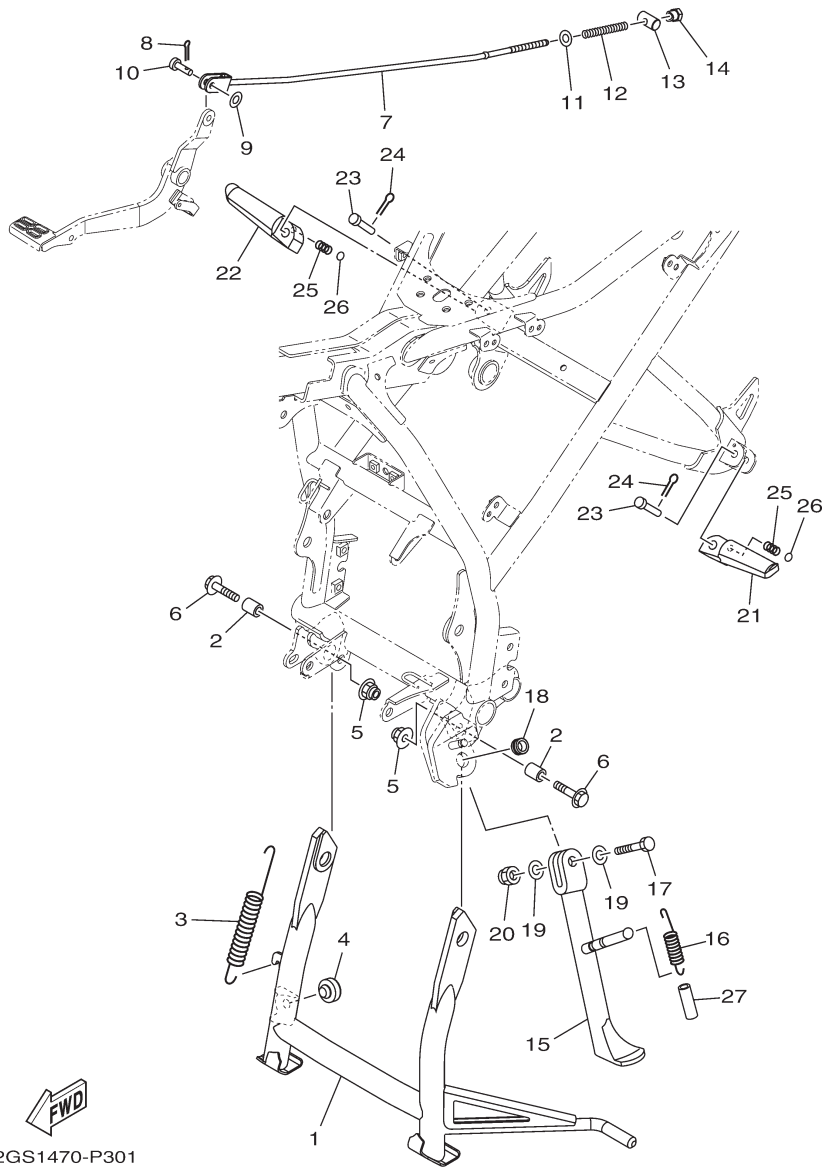
REF. NO.	PART NO.	PART NAME	2WS1				REMARKS
1	35B-F7451-00	FOOTREST	1				
2	2GS-F7452-00	BRACKET, FOOTREST 1	1				
3	90508-183B9	SPRING, TORSION	1				
4	91701-08040	PIN	1				
5	91401-25015	PIN, COTTER	1				
6	21C-F7413-01	COVER, FOOTREST	1				
7	98502-05014	SCREW, PAN HEAD	2				
8	90109-08202	BOLT	1				
9	21C-F7261-00	SHAFT	1				
10	90201-10841	WASHER, PLATE	1				
11	2GS-F7414-00	DAMPER, FOOTREST	1				
12	95812-08025	BOLT, FLANGE	2				
13	35B-F7461-00	FOOTREST	1				
14	2GS-F7462-00	BRACKET, FOOTREST 2	1				
15	90508-183B9	SPRING, TORSION	1				
16	91701-08040	PIN	1				
17	91401-25015	PIN, COTTER	1				
18	21C-F7413-01	COVER, FOOTREST	1				
19	98502-05014	SCREW, PAN HEAD	2				
20	90109-08202	BOLT	1				
21	2GS-F144G-00	STAY, STOP SWITCH	1				
22	95802-06010	BOLT, FLANGE	1				
23	21C-F7211-10	PEDAL, BRAKE	1				
24	90506-26807	SPRING, TENSION	1				
25	21C-F7261-00	SHAFT	1				
26	90201-10841	WASHER, PLATE	1				
27	2GS-F7424-00	DAMPER, FOOTREST 2	1				
28	95812-08025	BOLT, FLANGE	2				



2GS1470-P290

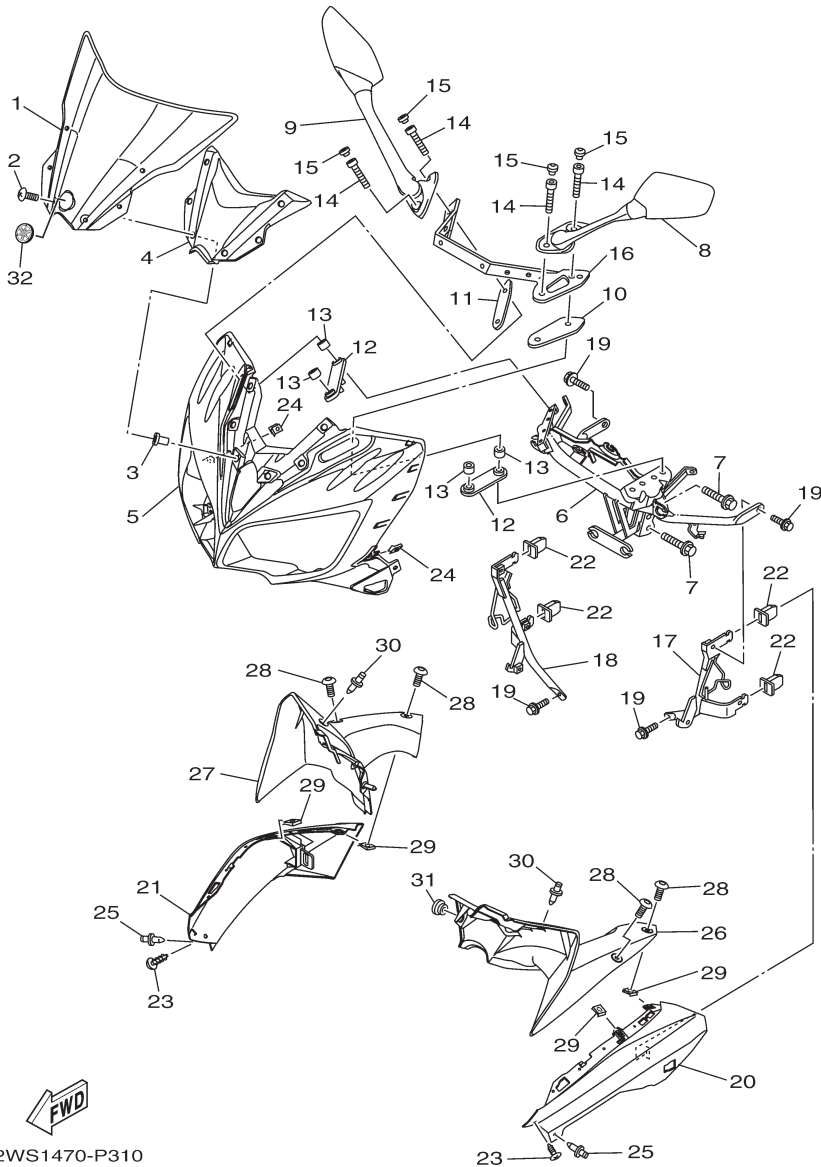
FIG. 30 (5F1) STAND & FOOTREST 2

REF. NO.	PART NO.	PART NAME	2WS1				REMARKS
1	45S-F7111-00	STAND, MAIN	1				
2	90387-10822	COLLAR	2				
3	90506-35816	SPRING, TENSION	1				
4	21C-F7114-00	STOPPER, MAIN STAND	1				
5	95602-10200	NUT, U FLANGE	2				
6	95812-10035	BOLT, FLANGE	2				
7	21C-F7231-00	ROD, BRAKE	1				
8	91401-20012	PIN, COTTER	1				
9	92902-06200	WASHER	1				
10	90240-06804	PIN, CLEVIS	1				
11	92902-06200	WASHER	1				
12	90501-10815	SPRING, COMPRESSION	1				
13	90249-12008	PIN	1				
14	90179-06835	NUT	1				
15	21C-F7311-00	STAND, SIDE	1				
16	90506-23807	SPRING, TENSION	1				
17	90101-10812	BOLT	1				
18	90387-10003	COLLAR	1				
19	90201-10841	WASHER, PLATE	2				
20	90185-10811	NUT, SELFLOCKING	1				
21	20P-F7431-00	FOOTREST, REAR 1	1				
22	20P-F7441-00	FOOTREST, REAR 2	1				
23	91701-08035	PIN	2				
24	91401-25015	PIN, COTTER	2				
25	90501-12743	SPRING, COMPRESSION	2				
26	93501-04805	BALL	2				
27	90445-13806	HOSE	1				



2GS1470-P301

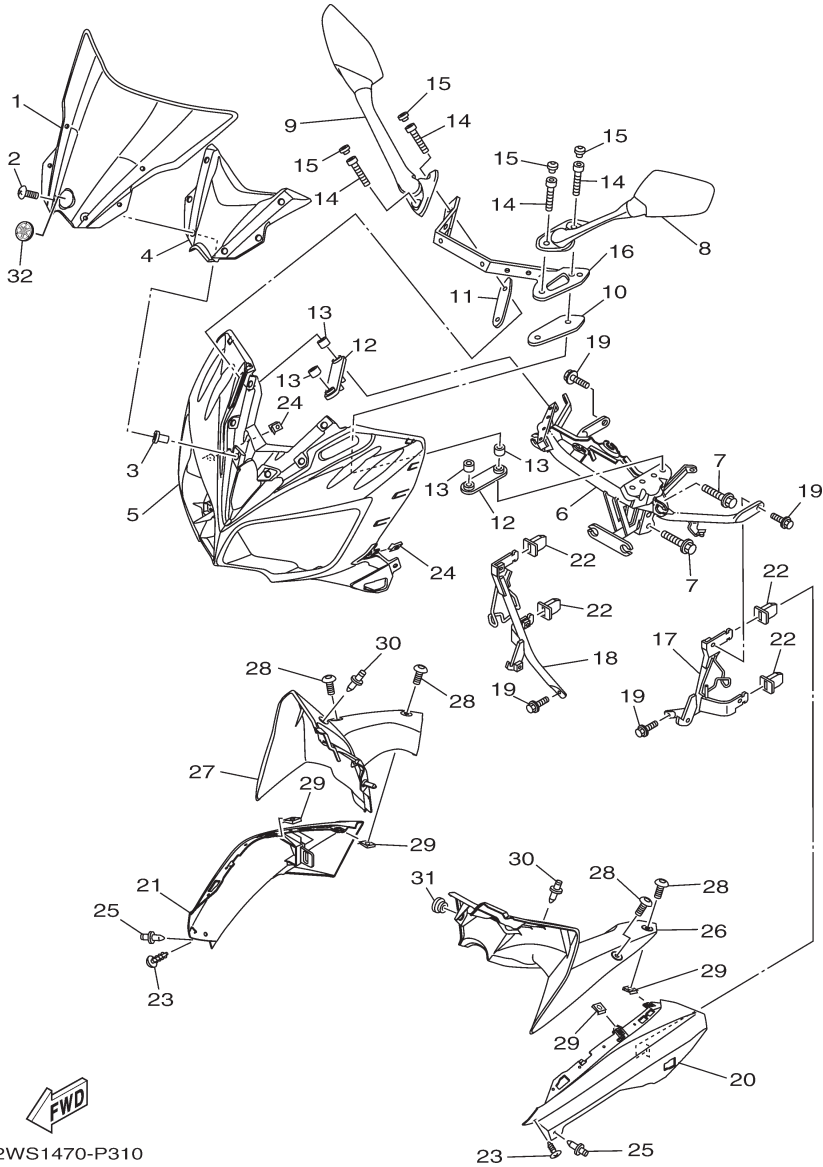
FIG. 31 (5N0) COWLING 1



2WS1470-P310

REF. NO.	PART NO.	PART NAME	2WS1				REMARKS
1	2WS-F8381-00	WINDSHIELD	1				
2	90150-05024	SCREW, ROUND HEAD	6				
3	90179-05804	NUT	6				
4	2WS-F836K-00	PANEL, INNER 1	1				
5	2WS-F835G-00-33	BODY, FRONT UPPER 1 - YB (Black)	1				FOR YB
	2WS-F835G-00-P0	BODY, FRONT UPPER 1 - VRC1 (Red)	1				FOR VRC1
	2WS-F835G-00-P1	BODY, FRONT UPPER 1 - BWC1 (White)	1				FOR BWC1
6	45S-F8356-02	STAY 1	1				
7	95812-08035	BOLT, FLANGE	2				
8	2WS-F6280-00	REAR VIEW MIRROR ASSY (LEFT)	1				
9	2WS-F6290-00	REAR VIEW MIRROR ASSY (RIGHT)	1				
10	45S-F8483-00	PLATE, RUBBER 1	1				
11	45S-F8484-00	PLATE, RUBBER 2	1				
12	45S-F8485-00	PLATE, RUBBER 3	2				
13	90387-068C2	COLLAR	4				
14	91317-06030	BOLT	4				
15	20P-F3469-00	CAP, BOLT	4				
16	45S-F1685-00	BRACKET, LICENSE	1				
17	45S-F831T-00	STAY, SUPPORT 1	1				
18	45S-F832T-00	STAY, SUPPORT 2	1				
19	95812-06012	BOLT, FLANGE	4				
20	2WS-F117V-00-33	COVER 7 - YB (Black)	1				FOR YB
	2WS-F117V-00-P0	COVER 7 - VRC1 (Red)	1				FOR VRC1
	2WS-F117V-00-P1	COVER 7 - BWC1 (White)	1				FOR BWC1
21	2WS-F117W-00-33	COVER 8 - YB (Black)	1				FOR YB
	2WS-F117W-00-P0	COVER 8 - VRC1 (Red)	1				FOR VRC1
	2WS-F117W-00-P1	COVER 8 - BWC1 (White)	1				FOR BWC1
22	45S-F1778-00	DAMPER, LOCATING 1	4				
23	97702-50012	SCREW, TAPPING	2				
24	90183-05807	NUT, SPRING	2				

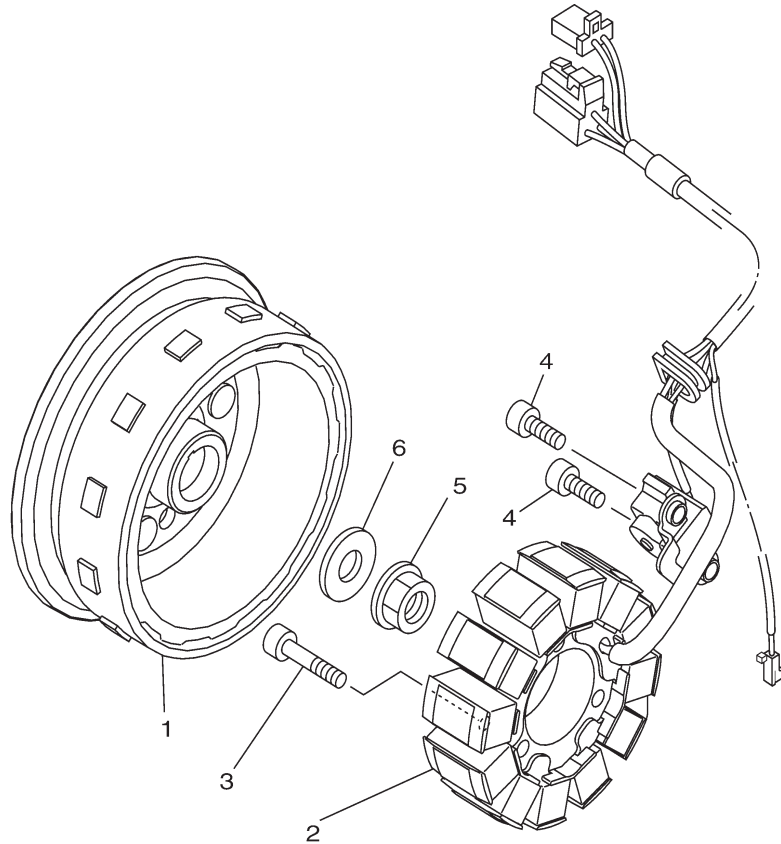
FIG. 31 (5N0) COWLING 1



2WS1470-P310

REF. NO.	PART NO.	PART NAME	2WS1				REMARKS
25	90269-06814	RIVET	2				
26	2WS-F837L-00	PANEL, CONSOLE 1	1				
27	2WS-F837M-00	PANEL, CONSOLE 2	1				
28	90160-05812	SCREW, ROUNDTAPPING	4				
29	90183-05807	NUT, SPRING	4				
30	90269-06814	RIVET	2				
31	90480-13567	GROMMET	1				
32	5TS-F836B-02	TUNING FORK MARK	1				

FIG. 32 (8A0) GENERATOR

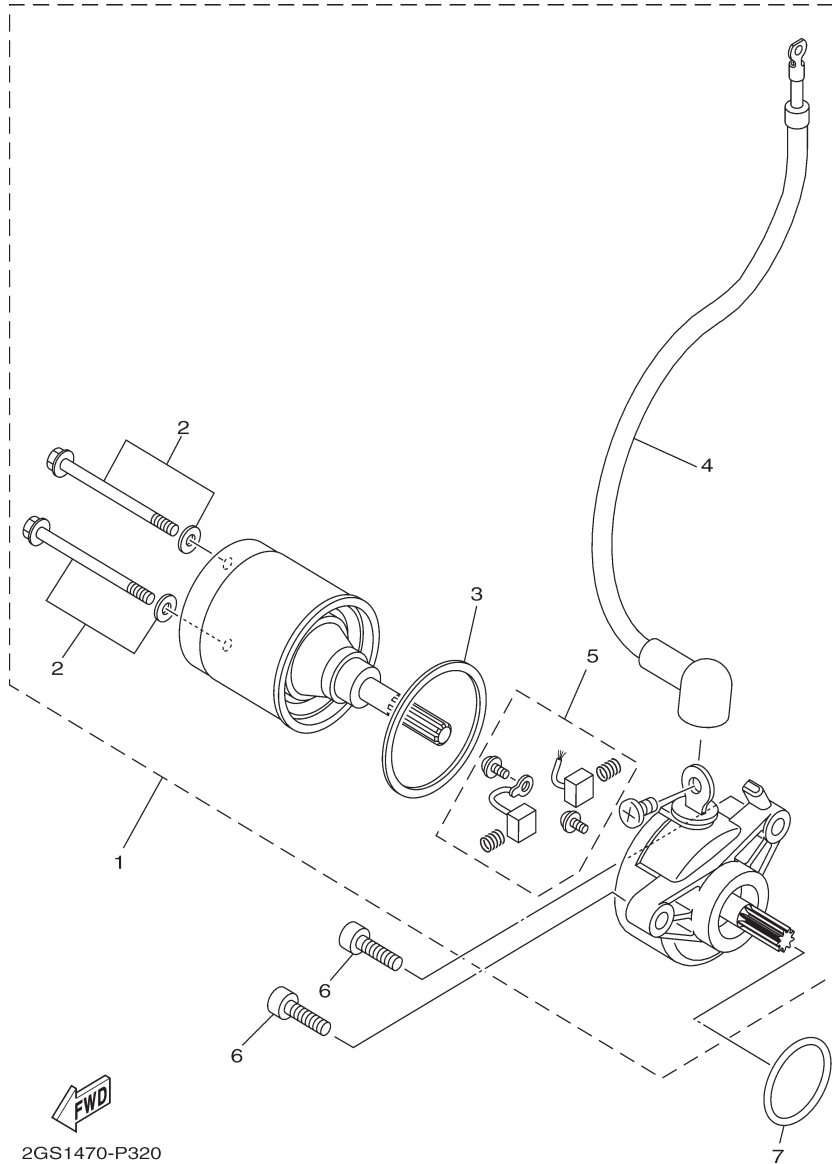


REF. NO.	PART NO.	PART NAME	2WS1				REMARKS
1	2GS-H1450-00	ROTOR ASSY	1				
2	2GS-H1410-00	STATOR ASSY	1				
3	91312-06030	BOLT	3				
4	91312-06016	BOLT	2				
5	95707-12500	NUT, FLANGE	1				
6	90201-12019	WASHER, PLATE	1				



2GS1470-P310

FIG. 33 (8C0) STARTING MOTOR

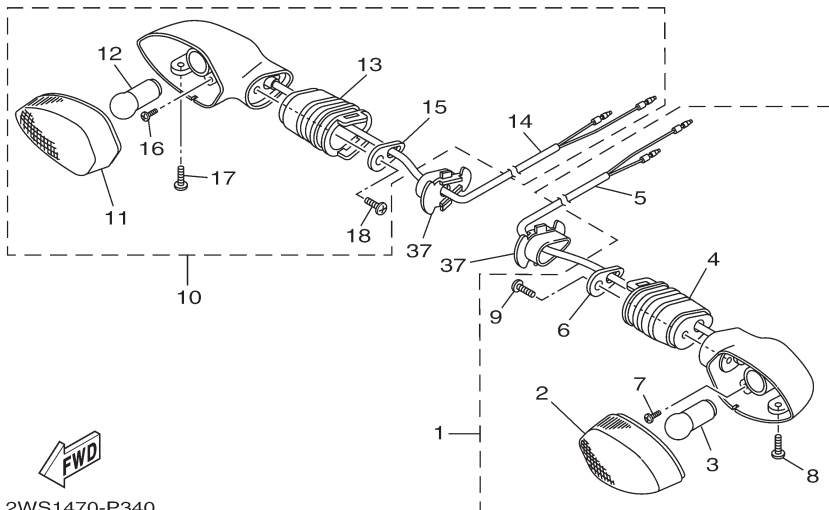
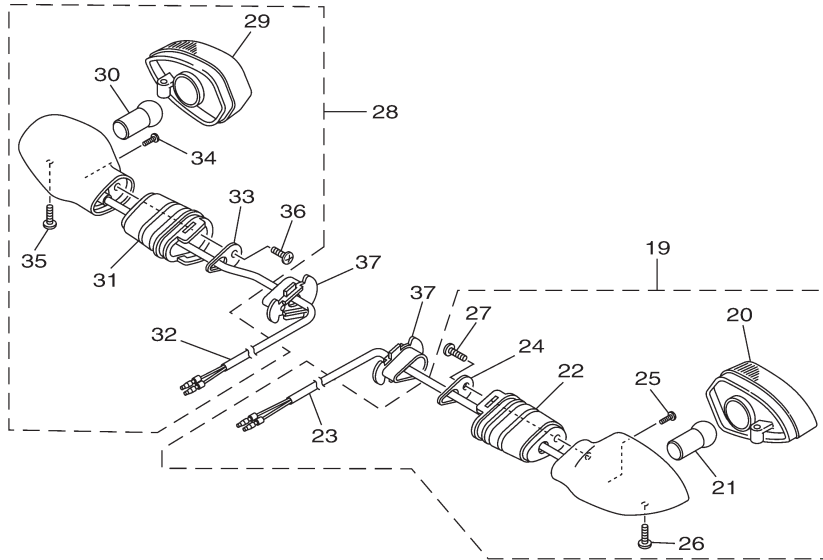


REF. NO.	PART NO.	PART NAME	2WS1				REMARKS
1	2GS-H1800-00	STARTING MOTOR ASSY	1				
2	5D9-H1828-00	.SCREW 2	1				
3	5D9-H1861-00	.GASKET	1				
4	2GS-H183G-00	.CORD COMP.	1				
5	5TP-H1801-00	.BRUSH SET	1				
6	91312-06020	BOLT	2				
7	93210-29807	ORING	1				

2GS1470-P320

FIG. 34 (8F0) FLASHER LIGHT

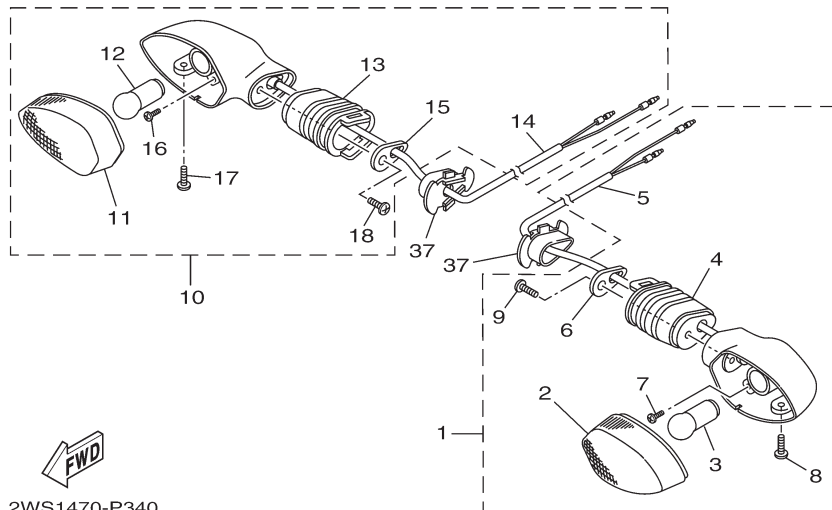
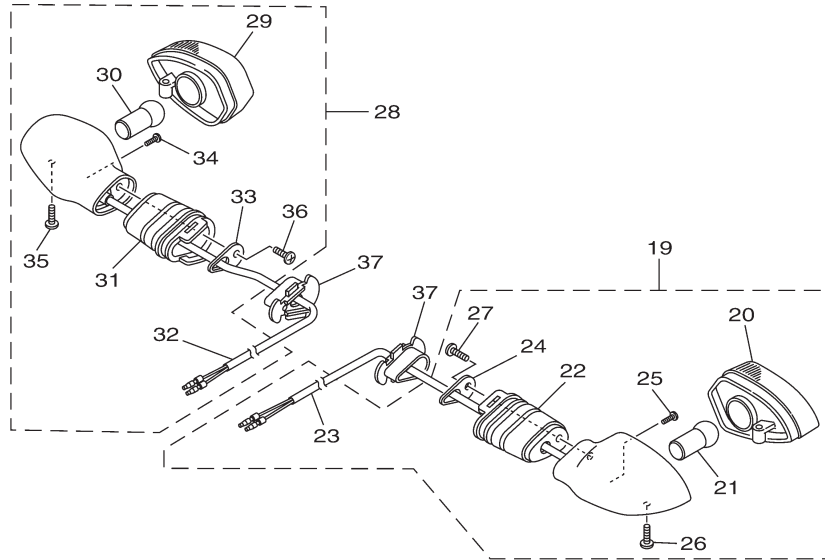
REF. NO.	PART NO.	PART NAME	2WS1				REMARKS
1	2WS-H3310-00	FRONT FLASHER LIGHT ASSY 1	1				
2	54B-H331A-00	.LENS COMP 1	1				
3	1GC-H3311-00	.BULB (12V10W)	1				
4	20P-H3318-10	.STAY, FLASHER 1	1				
5	45S-H331E-10	.CORD ASSY	1				
6	20P-H3618-00	.PLATE	1				
7	20P-H213A-00	.SCREW, FITTING	1				
8	20P-H3333-00	.SCREW, LENS FITTING	1				
9	20P-H2133-00	.SCREW, FITTING	1				
10	2WS-H3320-00	FRONT FLASHER LIGHT ASSY 2	1				
11	54B-H332A-00	.LENS COMP 2	1				
12	1GC-H3311-00	.BULB (12V10W)	1				
13	20P-H3318-10	.STAY, FLASHER 1	1				
14	45S-H332E-10	.CORD ASSY	1				
15	20P-H3618-00	.PLATE	1				
16	20P-H213A-00	.SCREW, FITTING	1				
17	20P-H3333-00	.SCREW, LENS FITTING	1				
18	20P-H2133-00	.SCREW, FITTING	1				
19	2GS-H3330-00	REAR FLASHER LIGHT ASSY 1	1				
20	54B-H333A-00	.LENS COMP 1	1				
21	1GC-H3311-00	.BULB (12V10W)	1				
22	20P-H3318-10	.STAY, FLASHER 1	1				
23	2GS-H333E-00	.CORD ASSY	1				
24	20P-H3618-00	.PLATE	1				
25	20P-H213A-00	.SCREW, FITTING	1				
26	20P-H3333-00	.SCREW, LENS FITTING	1				
27	20P-H2133-00	.SCREW, FITTING	1				
28	2GS-H3340-00	REAR FLASHER LIGHT ASSY 2	1				
29	54B-H334A-00	.LENS COMP 2	1				
30	1GC-H3311-00	.BULB (12V10W)	1				
40							



2WS1470-P340

FIG. 34 (8F0) FLASHER LIGHT

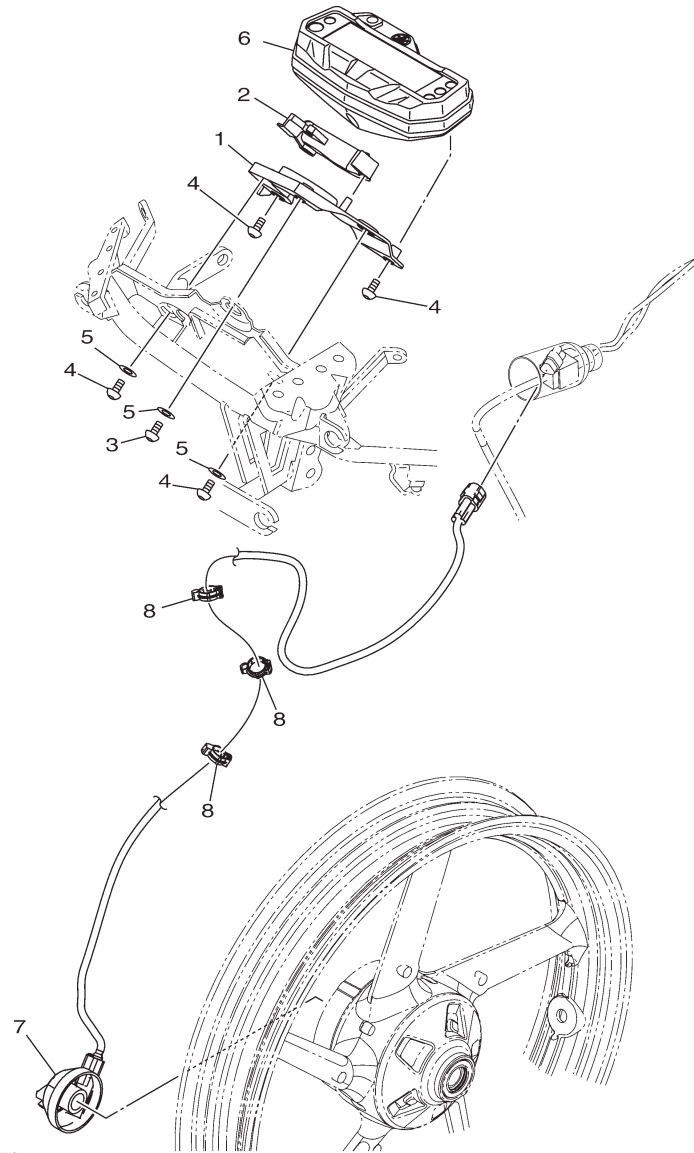
REF. NO.	PART NO.	PART NAME	2WS1					REMARKS
31	20P-H3318-10	.STAY, FLASHER 1	1					
32	2GS-H334E-00	.CORD ASSY	1					
33	20P-H3618-00	.PLATE	1					
34	20P-H213A-00	.SCREW, FITTING	1					
35	20P-H3333-00	.SCREW, LENS FITTING	1					
36	20P-H2133-00	.SCREW, FITTING	1					
37	5YY-H3318-10	STAY, FLASHER 1	4					



2WS1470-P340

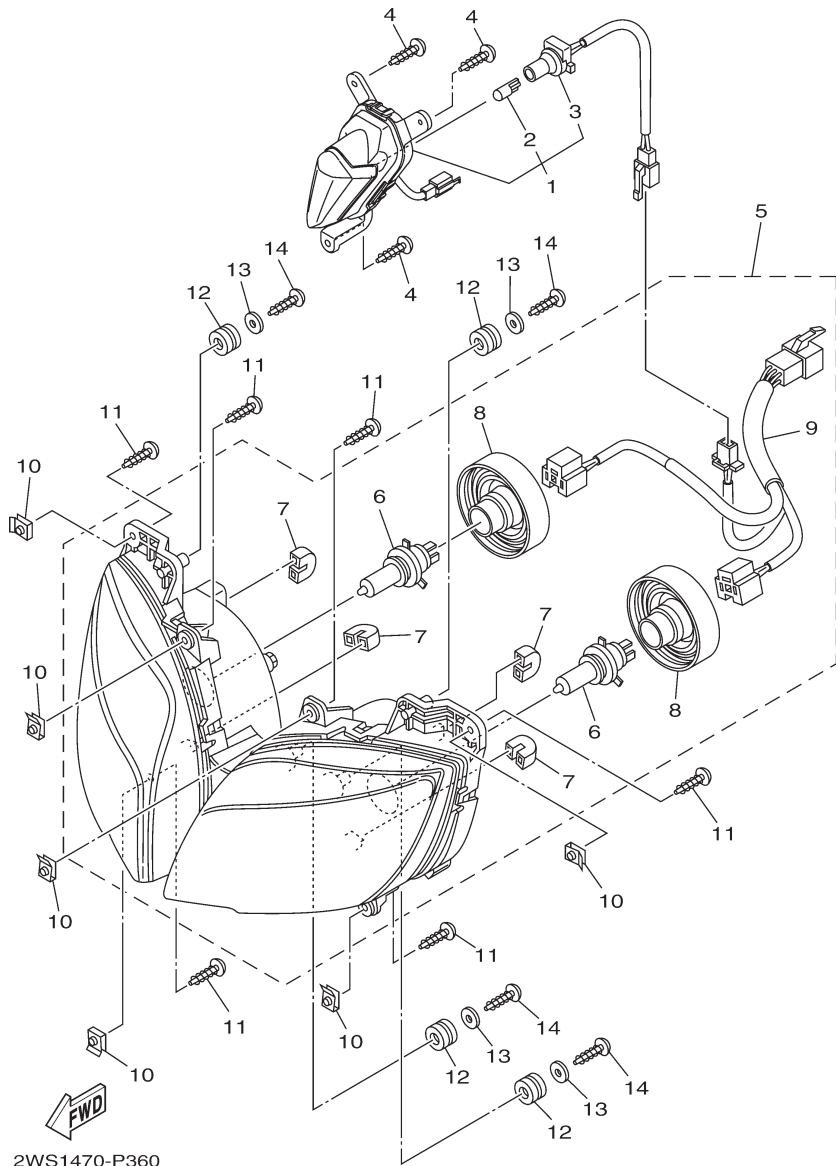
FIG. 35 (8G0) METER

REF. NO.	PART NO.	PART NAME	2WS1				REMARKS
1	2WS-F8213-00	PANEL, BLIND 1	1				
2	2WS-H3559-00	COVER, METER	1				
3	97702-50025	SCREW, TAPPING	1				
4	97702-50014	SCREW, TAPPING	4				
5	90201-05036	WASHER, PLATE	3				
6	2GS-H3500-00	METER ASSY	1				
7	21C-H3756-03	SENSOR, UNIT	1				
8	90464-14803	CLAMP	3				



2WS1470-P350

FIG. 36 (8H0) HEADLIGHT

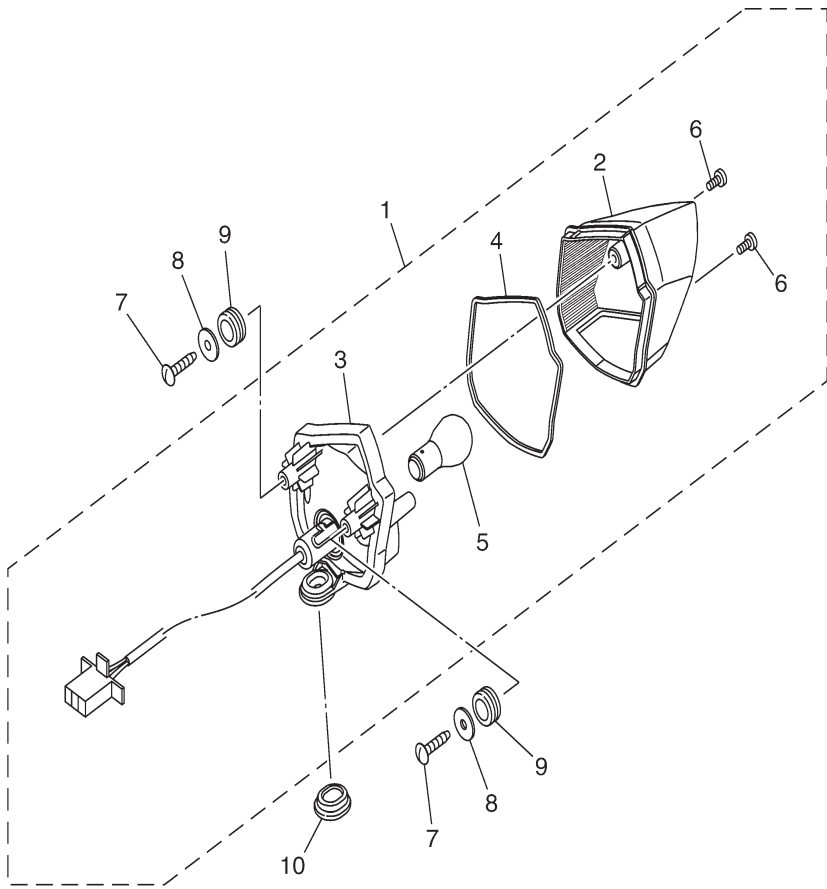


2WS1470-P360

REF. NO.	PART NO.	PART NAME	2WS1				REMARKS
1	2WS-H4410-00	POSITION LIGHT ASSY 1	1				
2	21C-H4347-00	.BULB (12V5W)	1				
3	45S-H414A-00	.CORD ASSY	1				
4	97707-40014	SCREW, TAPPING	3				
5	2WS-H4300-00	HEADLIGHT ASSY	1				
6	20P-H4314-00	.BULB (12V35/35W)	2				
7	45S-H4378-00	.CAP	4				
8	20P-H4397-00	.COVER, SOCKET	2				
9	2WS-H453A-00	.CORD ASSY	1				
10	90183-05807	NUT, SPRING	6				
11	97702-50016	SCREW, TAPPING	6				
12	90480-14229	GROMMET	4				
13	90201-05036	WASHER, PLATE	4				
14	97702-50016	SCREW, TAPPING	4				

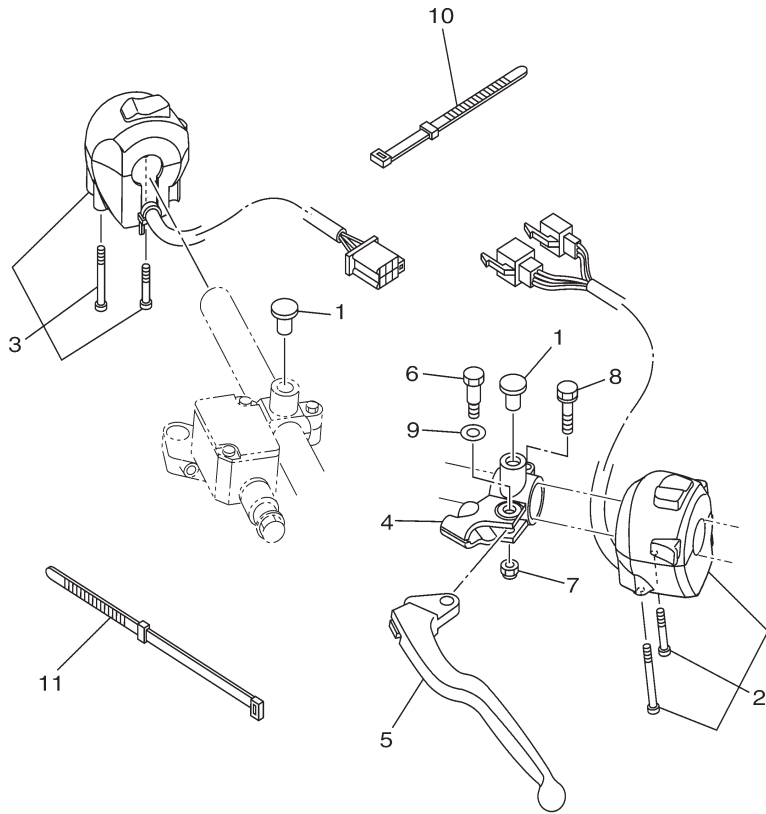
FIG. 37 (8J0) TAILLIGHT

REF. NO.	PART NO.	PART NAME	2WS1				REMARKS
1	2GS-H4710-00	TAILLIGHT UNIT ASSY	1				
2	2GS-H4721-00	.LENS, TAILLIGHT	1				
3	2GS-H4720-00	.BASE ASSY	1				
4	2GS-H4723-00	.GASKET, TAIL LENS	1				
5	54B-H4714-00	.BULB (12V21/5W)	1				
6	97702-40512	.SCREW, TAPPING	2				
7	97702-50016	SCREW, TAPPING	2				
8	90201-05036	WASHER, PLATE	2				
9	90480-14819	GROMMET	2				
10	90480-01558	GROMMET	1				



2GS1470-P360

FIG. 38 (8T0) HANDLE SWITCH & LEVER

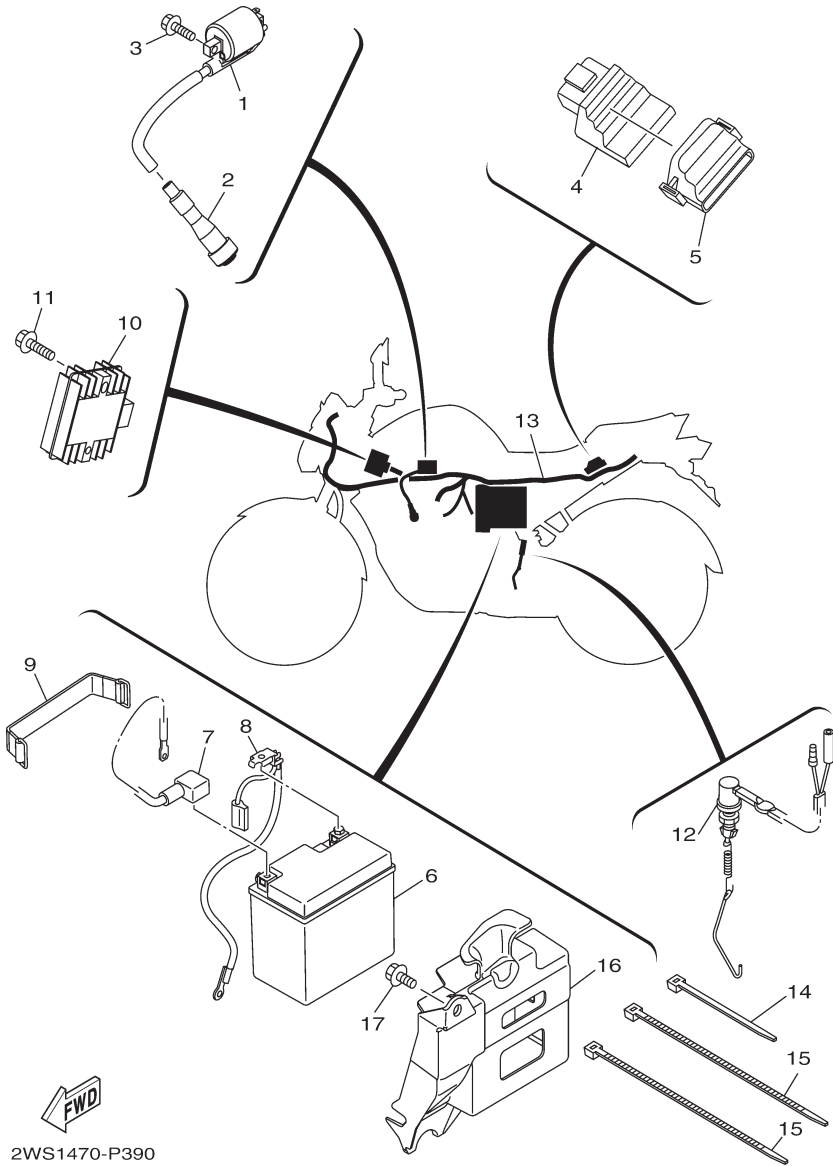


REF. NO.	PART NO.	PART NAME	2WS1				REMARKS
1	90338-09802	PLUG	2				
2	2WS-H3972-00	SWITCH, HANDLE 4	1				
3	2GS-H3963-00	SWITCH, HANDLE 3	1				
4	5YY-H2911-00	HOLDER, LEVER 1	1				
5	21C-H3912-00	LEVER 1	1				
6	36L-H3945-10	BOLT, LEVER	1				
7	95707-06300	NUT, NYLON	1				
8	9750M-06425	BOLT, WITH WASHER	1				
9	90201-08834	WASHER, PLATE	1				
10	36L-H3936-00	BAND, SWITCH CORD	2				
11	45S-H3936-00	BAND, SWITCH CORD	1				



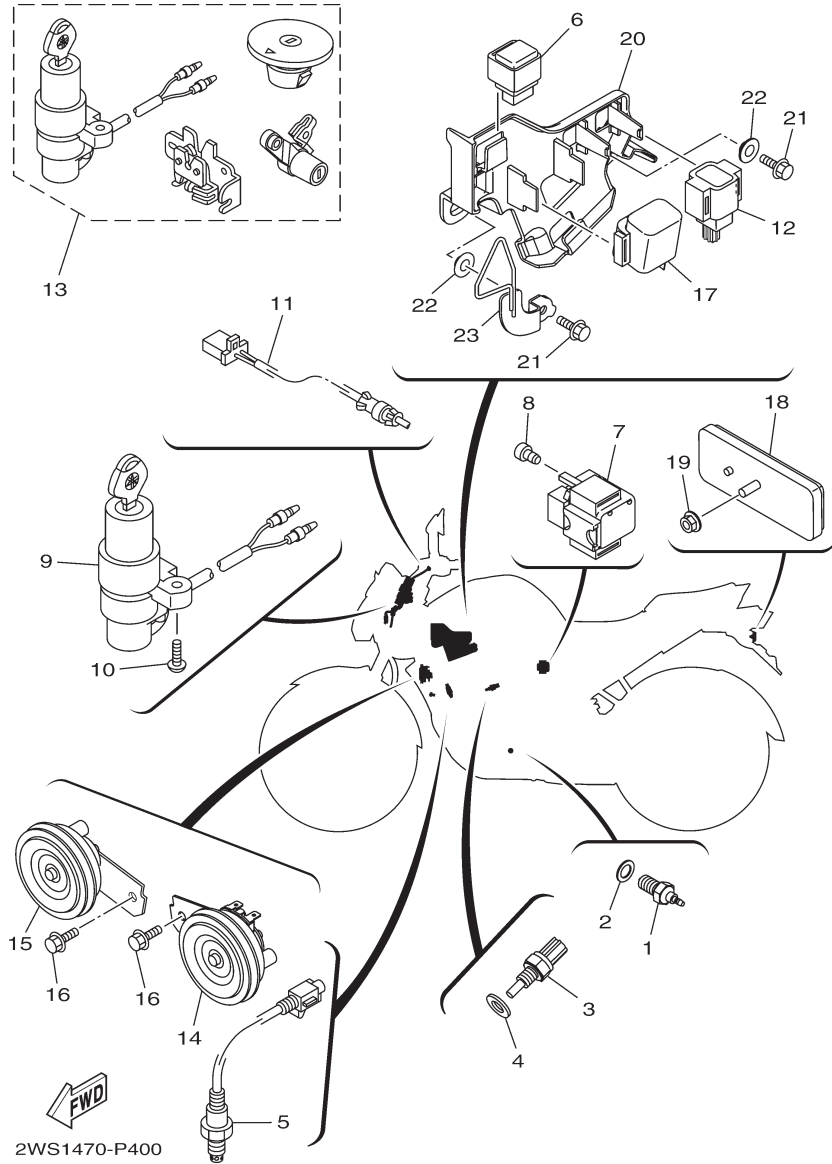
FIG. 39 (8V0) ELECTRICAL 1

REF. NO.	PART NO.	PART NAME	2WS1					REMARKS
1	2GS-H2310-00	IGNITION COIL ASSY	1					
2	97502-05520	BOLT, WITH WASHER	2					
3	20P-H2370-02	PLUG CAP ASSY	1					
4	2GS-H591A-00	ENGINE CONTROL UNIT ASSY	1					
5	2GS-H5546-00	BAND	1					
6	1CK-H2100-00	BATTERY (EXIDE ETZ5 MC VRLA)	1					
7	2GS-H2115-00	WIRE, PLUS LEAD	1					
8	2GS-H2116-00	WIRE, MINUS LEAD	1					
9	5YY-H2131-10	BAND, BATTERY	1					
10	2GS-H1960-00	RECTIFIER & REGULATOR ASSY	1					
11	95802-06025	BOLT, FLANGE	2					
12	21C-H2530-00	STOP SWITCH ASSY	1					
13	2WS-H2590-00	WIRE HARNESS ASSY	1					
14	90464-16061	CLAMP	6					
15	90464-50800	CLAMP	2					
16	2GS-F177G-00	BOX, BATTERY	1					
17	90119-06137	BOLT, WITH WASHER	2					



2WS1470-P390

FIG. 40 (8W0) ELECTRICAL 2



REF. NO.	PART NO.	PART NAME	2WS1				REMARKS
1	21C-H2540-00	NEUTRAL SWITCH ASSY	1				
2	90430-10148	GASKET	1				
3	52B-H3591-00	THERMO UNIT	1				
4	90201-10128	WASHER, PLATE	1				
5	2GS-H592A-00	SENSOR, OXYGEN	1				
6	5YY-H1950-10	RELAY ASSY	1				
7	2WS-H1940-00	STARTER RELAY ASSY	1				
8	91312-05008	BOLT	2				
9	2GS-H2501-00	MAIN SWITCH STEERING LOCK	1				
10	90149-06118	SCREW	2				
11	21C-H2917-01	SWITCH	1				
12	1PA-H2576-00	SENSOR, LEAN ANGLE	1				
13	2GS-XH250-00	MAIN SW. STRG. LOCK SUB ASSY	1				AP
14	2WS-H3371-00	HORN	1				
15	2WS-H3371-10	HORN	1				
16	95827-06012	BOLT, FLANGE	2				
17	21C-H3350-00	FLASHER RELAY ASSY	1				
18	5US-H5110-00	REFLECTOR ASSY	1				
19	95702-05500	NUT, FLANGE	1				
20	2GS-F418E-00	BOX 1	1				
21	9580N-06016	BOLT, FLANGE	2				
22	90387-068S1	COLLAR	1				
23	2WS-F4885-00	GUIDE, WIRE	1				

2WS1

PART NO	REF. NO.	PART NO	REF. NO.	PART NO	REF. NO.	PART NO	REF. NO.	PART NO	REF. NO.	PART NO	REF. NO.
1CK-H2100-00	39-6	20P-H4397-00	36-8	21C-E8531-00	13-5	21C-F4614-00-P0	21-19	2GS-E1310-00	1-20	2GS-E7221-00	12-7
1GC-H3311-00	34-3	21C-E1169-10	1-7	21C-E8535-00	13-6	21C-F4780-01	23-7	2GS-E1361-00	1-15	2GS-E7231-00	12-10
1GC-H3311-00	34-12	21C-E1351-00	1-21	21C-F1511-00-P2	16-1	21C-F510C-10	24-2	2GS-E1400-09	2-1	2GS-E7241-00	12-15
1GC-H3311-00	34-21	21C-E1496-20	2-16	21C-F1511-00-P5	16-1	21C-F5168-20-33	24-1	2GS-E1422-00	2-5	2GS-E7251-00	12-16
1GC-H3311-00	34-30	21C-E1633-00	2-9	21C-F1511-00-P6	16-1	21C-F5183-01	24-7	2GS-E1454-00	2-14	2GS-E7402-00	12-6
1PA-H2576-00	40-12	21C-E1681-01	2-2	21C-F1638-02	15-13	21C-F530S-10	26-2	2GS-E1531-00	2-15	2GS-E7410-00	12-1
1PM-E2288-00	4-6	21C-E2156-00	3-12	21C-F1717-00	15-16	21C-F5338-20-33	26-1	2GS-E1536-00	2-12	2GS-E8540-00	13-1
1PM-E5514-00	10-1	21C-E2210-02	4-13	21C-F1717-00	17-9	21C-F5355-01	26-11	2GS-E1603-00	2-11	2GS-F117K-00	23-11
1PM-E5524-10	10-5	21C-E2231-00	4-9	21C-F2147-00	18-20	21C-F5364-00	26-5	2GS-E1605-00	2-11	2GS-F1279-00	15-14
1PM-E6345-00	11-23	21C-E2435-11	1-12	21C-F2174-00	26-40	21C-F5371-00	26-24	2GS-E1607-00	2-11	2GS-F1316-00	15-2
1PM-F4741-00	15-15	21C-E2437-00	4-16	21C-F3110-00	20-18	21C-F5377-01	26-33	2GS-E1631-00	2-8	2GS-F1317-00	15-5
1PM-F4741-00	23-2	21C-E2661-10	1-22	21C-F3110-00	20-35	21C-F5383-10	26-34	2GS-E1636-09	2-8	2GS-F144G-00	29-21
1ST-E2151-00	3-9	21C-E3362-00	2-20	21C-F3111-00	20-5	21C-F5388-11	26-39	2GS-E1638-09	2-8	2GS-F1611-00	16-6
20P-E443E-00	6-19	21C-E3440-00	5-6	21C-F3111-00	20-22	21C-F582U-00	25-1	2GS-E1651-00	2-4	2GS-F1613-00	16-12
20P-E4747-00	7-10	21C-E3447-00	5-7	21C-F3114-00	20-4	21C-F5872-00	28-2	2GS-E2111-00	3-1	2GS-F1614-00	16-13
20P-E4747-00	15-11	21C-E3449-00	5-10	21C-F3114-00	20-21	21C-F620B-21	27-11	2GS-E2113-00	3-5	2GS-F163A-00	16-15
20P-E8113-00	14-10	21C-E4613-00	7-11	21C-F3118-00	20-6	21C-F6240-10	27-10	2GS-E2121-00	3-2	2GS-F1644-00	18-13
20P-F2129-00	18-5	21C-E4775-00	7-9	21C-F3118-00	20-23	21C-F6241-00	27-9	2GS-E2126-00	3-4	2GS-F1645-00	18-14
20P-F3418-00	19-8	21C-E5155-00	8-3	21C-F3126-01	20-3	21C-F6335-01	27-5	2GS-E2170-00	4-1	2GS-F164F-00	18-15
20P-F3469-00	31-15	21C-E5421-00	9-17	21C-F3136-01	20-20	21C-F7114-00	30-4	2GS-E2213-00	4-14	2GS-F1650-00	18-12
20P-F5366-00-33	26-15	21C-E5441-00	9-1	21C-F3141-00	20-8	21C-F7211-10	29-23	2GS-E2241-00	4-10	2GS-F1651-00	16-14
20P-F5377-00	26-17	21C-E5451-10	9-4	21C-F3141-00	20-25	21C-F7231-00	30-7	2GS-E2280-00	4-5	2GS-F1711-00	17-1
20P-F7431-00	30-21	21C-E5461-10	9-18	21C-F3146-00	20-15	21C-F7261-00	29-9	2GS-E3557-00	6-6	2GS-F171L-00	17-22
20P-F7441-00	30-22	21C-E5521-00	10-2	21C-F3146-00	20-32	21C-F7261-00	29-25	2GS-E3585-00	6-1	2GS-F171M-00	17-23
20P-H2133-00	34-9	21C-E5666-00	12-23	21C-F3149-00	20-7	21C-F7311-00	30-15	2GS-E3635-00	6-8	2GS-F1721-00	17-5
20P-H2133-00	34-18	21C-E6135-10	11-19	21C-F3149-00	20-24	21C-F7413-01	29-6	2GS-E3645-00	6-3	2GS-F172A-00-P0	17-2
20P-H2133-00	34-27	21C-E6154-00	11-7	21C-F3156-00	20-13	21C-F7413-01	29-18	2GS-E3750-00	6-11	2GS-F172F-00-P0	17-6
20P-H2133-00	34-36	21C-E6193-00	11-3	21C-F3156-00	20-30	21C-F8100-20	16-20	2GS-E3770-00	6-4	2GS-F1731-00-33	17-10
20P-H213A-00	34-7	21C-E6324-00	11-11	21C-F3158-00	20-10	21C-H2530-00	39-12	2GS-E3907-00	21-27	2GS-F1731-00-P0	17-10
20P-H213A-00	34-16	21C-E6331-00	11-10	21C-F3158-00	20-27	21C-H2540-00	40-1	2GS-E3971-00	21-23	2GS-F1731-00-P3	17-10
20P-H213A-00	34-25	21C-E6333-00	11-13	21C-F3173-00	20-11	21C-H2917-01	40-11	2GS-E4411-00	6-12	2GS-F1732-00	17-25
20P-H213A-00	34-34	21C-E6337-00	11-14	21C-F3173-00	20-28	21C-H3350-00	40-17	2GS-E4412-00	6-13	2GS-F1735-00	17-26
20P-H2370-02	39-3	21C-E6356-01	11-16	21C-F3181-00	20-9	21C-H3756-03	35-7	2GS-E4437-00	6-22	2GS-F1741-00-33	17-11
20P-H3318-10	34-4	21C-E6358-00	11-15	21C-F3181-00	20-26	21C-H3912-00	38-5	2GS-E4450-00	6-14	2GS-F1741-00-P0	17-11
20P-H3318-10	34-13	21C-E6371-00	11-8	21C-F3317-00	28-18	21C-H4347-00	36-2	2GS-E4452-00	6-16	2GS-F1741-00-P3	17-11
20P-H3318-10	34-22	21C-E6380-02	11-22	21C-F3340-02	20-36	21C-WF461-20	21-22	2GS-E4453-00	6-15	2GS-F177G-00	39-16
20P-H3318-10	34-31	21C-E7258-00	12-13	21C-F3346-00	20-39	21C-WF479-00	23-10	2GS-E4703-00	7-1	2GS-F2141-00	18-4
20P-H3333-00	34-8	21C-E7402-50	12-6	21C-F3411-00	20-38	2GS-12159-00	3-10	2GS-E4718-00	7-2	2GS-F2151-00	18-8
20P-H3333-00	34-17	21C-E7471-00	12-4	21C-F3412-00	19-1	2GS-E1102-00	1-1	2GS-E4799-00	7-3	2GS-F2210-00	18-23
20P-H3333-00	34-26	21C-E8101-01	14-4	21C-F3413-00	19-2	2GS-E111F-00	4-4	2GS-E4877-00	6-17	2GS-F3100-00	20-1
20P-H3333-00	34-35	21C-E8110-10	14-9	21C-F3414-00	19-3	2GS-E1165-00	1-6	2GS-E5411-00	9-3	2GS-F3102-00	20-2
20P-H3618-00	34-6	21C-E8140-00	14-1	21C-F3435-00	19-10	2GS-E1166-00	6-26	2GS-E5418-00	9-13	2GS-F3103-00	20-19
20P-H3618-00	34-15	21C-E8337-00	14-3	21C-F3441-00	19-16	2GS-E1181-01	1-17	2GS-E5580-00	10-8	2GS-F3144-00	20-12
20P-H3618-00	34-24	21C-E8511-00	13-2	21C-F4181-00	21-2	2GS-E1186-00	1-11	2GS-E6111-00	11-1	2GS-F3144-00	20-29
20P-H3618-00	34-33	21C-E8512-00	13-3	21C-F4183-00	21-4	2GS-E1190-00	1-5	2GS-E6150-00	11-6	2GS-F3145-00	20-14
20P-H4314-00	36-6	21C-E8513-00	13-4	21C-F4188-10	21-14	2GS-E1193-00	1-9	2GS-E7211-00	12-14	2GS-F3145-00	20-31

2WS1

PART NO	REF. NO.	PART NO	REF. NO.	PART NO	REF. NO.	PART NO	REF. NO.	PART NO	REF. NO.	PART NO	REF. NO.
2GS-F3170-00	20-17	2GS-H3500-00	35-6	2WS-H3972-00	38-2	4D9-12117-00	3-7	54B-WF587-00	28-5	90119-06137	39-17
2GS-F3170-00	20-34	2GS-H3963-00	38-3	2WS-H4300-00	36-5	4FM-23125-40	20-16	5CA-E4147-00	6-5	90123-08046	27-7
2GS-F3438-00	19-15	2GS-H4710-00	37-1	2WS-H4410-00	36-1	4FM-23125-40	20-33	5D9-H1828-00	33-2	90149-05807	1-8
2GS-F4110-00	21-1	2GS-H4720-00	37-3	2WS-H453A-00	36-9	4LS-E3411-00	5-5	5D9-H1861-00	33-3	90149-06118	40-10
2GS-F414A-00	21-17	2GS-H4721-00	37-2	2WS-XF412-00-33	22-1	4LS-E5598-00	4-11	5KA-F413B-00	22-20	90149-06829	4-12
2GS-F414G-00	21-29	2GS-H4723-00	37-4	2WS-XF412-10-P0	22-1	4LS-E7456-00	12-21	5KA-F413B-00	22-22	90149-06829	16-16
2GS-F4170-00	21-31	2GS-H5546-00	39-5	2WS-XF412-20-P1	22-1	4LS-F341E-00	19-5	5TP-H1801-00	33-5	90150-05024	31-2
2GS-F4180-00	21-34	2GS-H591A-00	39-4	2WS-XF413-00-33	22-2	4LS-F341E-10	19-4	5TS-F836B-02	17-16	90159-05065	21-20
2GS-F418E-00	40-20	2GS-H592A-00	40-5	2WS-XF413-10-P0	22-2	4LS-F4741-00	23-6	5TS-F836B-02	31-32	90159-06054	23-12
2GS-F4191-00	21-8	2GS-W0045-00	25-8	2WS-XF413-20-P1	22-2	4TL-F6372-00	27-6	5US-F5321-10	26-6	90160-05812	22-5
2GS-F419A-00	21-35	2GS-WF211-00	18-1	2WS-XF836-00-P0	22-19	4JU-F811G-00	16-11	5US-H5110-00	40-18	90160-05812	31-28
2GS-F4312-00	21-36	2GS-XF17C-00-P0	17-15	2WS-XF836-10-P1	22-19	52B-H3591-00	40-3	5YY-F3416-00	19-6	90170-05302	3-11
2GS-F4313-00	21-37	2GS-XF17C-00-P4	17-15	2WS-XF836-20-P2	22-19	52S-E2169-10	3-8	5YY-F3462-00	20-37	90170-10012	2-26
2GS-F4314-00	21-38	2GS-XF17C-00-P5	17-15	2WS-XF83G-00-P0	22-21	54B-E1476-00	2-19	5YY-F5351-00	26-10	90171-14800	24-9
2GS-F4315-00	21-39	2GS-XF17D-00-P0	21-15	2WS-XF83G-10-P1	22-21	54B-E3300-00	5-1	5YY-F5867-00	28-10	90171-14800	26-35
2GS-F4364-00	21-25	2GS-XF17D-00-P4	21-15	2WS-XF83G-20-P2	22-21	54B-E4757-00	7-8	5YY-H1950-10	40-6	90179-05804	21-21
2GS-F4491-00	21-28	2GS-XF17D-00-P5	21-15	35B-F7451-00	29-1	54B-E5111-00	8-1	5YY-H2131-10	39-9	90179-05804	31-3
2GS-F4549-00	21-16	2GS-XH250-00	40-13	35B-F7461-00	29-13	54B-E5121-01	8-2	5YY-H2911-00	38-4	90179-06835	30-14
2GS-F4710-00	23-1	2WS-F1110-00	15-1	36L-F533A-00	26-14	54B-E5362-00	9-21	5YY-H3318-10	34-37	90179-08148	27-8
2GS-F4741-00	23-5	2WS-F117V-00-33	31-20	36L-H3936-00	38-10	54B-E6144-00	11-17	5YY-WF533-00	26-7	90179-08674	15-8
2GS-F474A-00	23-13	2WS-F117V-00-P0	31-20	36L-H3945-10	38-6	54B-E6321-00	11-9	90101-06046	26-12	90179-10811	15-4
2GS-F474W-00	23-14	2WS-F117V-00-P1	31-20	38B-E2119-00	3-3	54B-E6351-00	11-12	90101-10812	30-17	90179-12802	11-5
2GS-F4750-00	23-4	2WS-F117W-00-33	31-21	3C1-E6344-00	11-18	54B-E6357-00	11-24	90105-06169	21-12	90179-14001	11-20
2GS-F478E-00	23-9	2WS-F117W-00-P0	31-21	3S0-E2118-00	3-6	54B-E7258-00	11-2	90105-06859	28-11	90179-22025	19-14
2GS-F5181-00	24-8	2WS-F117W-00-P1	31-21	45P-E5353-00	9-5	54B-F5852-00	28-8	90105-08002	15-6	90179-25615	19-7
2GS-F5381-00	26-32	2WS-F137U-00	22-15	45S-F1685-00	31-16	54B-F5854-00	28-7	90105-08196	4-7	90183-05067	17-24
2GS-F5441-00	26-19	2WS-F137V-00	22-16	45S-F1778-00	31-22	54B-F5855-00	28-12	90105-10319	25-15	90183-05807	17-3
2GS-F580U-00	25-3	2WS-F317F-00	19-18	45S-F411G-00	22-8	54B-F589H-00	28-9	90105-10861	15-10	90183-05807	17-7
2GS-F6311-00	27-2	2WS-F4124-00	22-12	45S-F411H-00	22-9	54B-F5916-00	25-10	90105-12057	18-25	90183-05807	17-12
2GS-F6312-00	27-3	2WS-F4885-00	40-23	45S-F411J-00	22-10	54B-F5917-00	25-13	90105-12804	18-26	90183-05807	22-7
2GS-F7414-00	29-11	2WS-F6280-00	31-8	45S-F5875-00	28-1	54B-F5919-00	25-6	90109-06259	14-2	90183-05807	22-18
2GS-F7424-00	29-27	2WS-F6290-00	31-9	45S-F5876-00	28-17	54B-F5924-00	25-9	90109-06859	28-15	90183-05807	31-24
2GS-F7452-00	29-2	2WS-F8213-00	35-1	45S-F6111-01	27-1	54B-F5925-00	25-11	90109-08063	26-25	90183-05807	31-29
2GS-F7462-00	29-14	2WS-F835G-00-33	31-5	45S-F6131-00	19-11	54B-F5926-00	25-14	90109-08202	29-8	90183-05807	36-10
2GS-H1410-00	32-2	2WS-F835G-00-P0	31-5	45S-F6132-00	19-12	54B-F5937-00	25-12	90109-08202	29-20	90183-06800	16-17
2GS-H1450-00	32-1	2WS-F835G-00-P1	31-5	45S-F7111-00	30-1	54B-F6338-00	28-16	90109-08831	26-29	90183-06800	18-18
2GS-H1800-00	33-1	2WS-F836K-00	31-4	45S-F831T-00	31-17	54B-H331A-00	34-2	90110-06256	1-24	90185-10811	30-20
2GS-H183G-00	33-4	2WS-F837L-00	31-26	45S-F832T-00	31-18	54B-H332A-00	34-11	90110-06304	1-19	90201-05036	35-5
2GS-H1960-00	39-10	2WS-F837M-00	31-27	45S-F8356-02	31-6	54B-H333A-00	34-20	90110-06393	4-15	90201-05036	36-13
2GS-H2115-00	39-7	2WS-F8381-00	31-1	45S-F8483-00	31-10	54B-H334A-00	34-29	90111-05035	5-2	90201-05036	37-8
2GS-H2116-00	39-8	2WS-H1940-00	40-7	45S-F8484-00	31-11	54B-H3922-00	28-14	90111-06117	16-5	90201-05820	1-23
2GS-H2310-00	39-1	2WS-H2590-00	39-13	45S-F8485-00	31-12	54B-H3980-01	28-13	90111-06807	7-7	90201-06055	17-20
2GS-H2501-00	40-9	2WS-H3310-00	34-1	45S-H331E-10	34-5	54B-H4714-00	37-5	90111-06826	7-6	90201-060A3	18-10
2GS-H3330-00	34-19	2WS-H3320-00	34-10	45S-H332E-10	34-14	54B-W0041-00	28-6	90111-08029	25-2	90201-060A3	21-9
2GS-H333E-00	34-23	2WS-H3371-00	40-14	45S-H3936-00	38-11	54B-W0047-00	25-5	90116-08826	26-20	90201-06380	21-10
2GS-H3340-00	34-28	2WS-H3371-10	40-15	45S-H414A-00	36-3	54B-W0048-00	25-7	90119-06060	18-19	90201-06871	14-13
2GS-H334E-00	34-32	2WS-H3559-00	35-2	45S-H4378-00	36-7	54B-W0057-00	25-4	90119-06137	17-18	90201-08326	26-27

2WS1

PART NO	REF. NO.	PART NO	REF. NO.	PART NO	REF. NO.	PART NO	REF. NO.	PART NO	REF. NO.	PART NO	REF. NO.
90201-08612	7-13	90387-06737	6-23	90480-13398	22-3	92902-08600	26-41	94703-00885	1-16	95812-08025	23-15
90201-087F0	7-17	90387-068B2	21-6	90480-13567	31-31	92902-14200	24-11	95022-06010	12-22	95812-08025	29-12
90201-08834	38-9	90387-068C2	31-13	90480-14229	36-12	93101-10838	9-23	95022-06010	23-8	95812-08025	29-28
90201-10128	40-4	90387-068C5	16-2	90480-14819	37-9	93102-12875	14-8	95022-06012	1-2	95812-08035	31-7
90201-105E8	10-3	90387-068C9	9-15	90480-15363	21-3	93102-12877	11-27	95022-06020	5-8	95812-08040	7-16
90201-10815	28-4	90387-068N2	18-16	90480-15363	21-43	93102-22818	12-19	95022-06025	1-10	95812-10035	30-6
90201-10841	29-10	90387-068S1	18-21	90501-06800	13-7	93106-22808	24-3	95022-06025	1-13	95812-10080	15-3
90201-10841	29-26	90387-068S1	40-22	90501-10815	30-12	93106-22808	26-4	95022-06040	9-7	95817-10130	15-9
90201-10841	30-19	90387-07819	19-20	90501-12743	30-25	93106-26801	26-18	95022-06040	9-20	95822-06016	6-25
90201-12019	11-4	90387-08079	16-10	90506-12001	26-8	93210-14899	9-10	95022-06045	8-7	95822-06016	16-9
90201-12019	32-6	90387-08822	15-12	90506-15001	26-9	93210-19809	9-22	95022-06050	9-8	95822-06016	19-19
90201-12028	18-7	90387-09806	6-24	90506-23807	30-16	93210-29807	33-7	95022-06055	8-6	95822-06030	21-13
90201-122H1	18-28	90387-10003	30-18	90506-26807	29-24	93210-32814	9-12	95022-06065	5-9	95827-06012	22-14
90201-15022	2-17	90387-107H6	21-7	90506-35816	30-3	93306-002YV	4-3	95022-06070	8-8	95827-06012	40-16
90201-15814	26-37	90387-10822	30-2	90508-183B9	29-3	93306-054Y5	26-16	95022-08012	23-3	97012-06014	16-7
90201-178D3	12-12	90387-12845	18-24	90508-183B9	29-15	93306-054Y6	12-2	95022-08035	19-17	97012-06014	16-18
90201-178D3	12-24	90387-12863	18-2	90508-32805	14-5	93306-054YA	26-16	95022-08040	19-13	97012-06014	21-11
90201-22793	12-8	90387-155J0	2-21	91312-05008	40-8	93306-054YE	12-2	95027-06016	18-11	97012-06014	21-32
90201-25290	10-7	90387-20813	2-13	91312-05010	21-30	93306-201Y4	12-3	95027-06016	18-17	97012-06020	14-14
90202-05180	22-6	90401-10818	28-3	91312-05016	3-13	93306-203XR	12-17	95027-06016	18-22	97502-05520	39-2
90202-26142	19-9	90430-06817	1-3	91312-06014	9-2	93306-252XG	24-4	95302-08600	26-30	9750M-06425	38-8
90208-20003	11-21	90430-06817	1-14	91312-06016	4-17	93306-252XG	26-3	95302-08600	26-42	97602-05320	6-21
90209-18208	12-11	90430-10148	40-2	91312-06016	32-4	93306-252YG	2-22	95302-08700	26-26	97702-40512	37-6
90214-10006	2-18	90430-12227	5-4	91312-06020	10-9	93306-252YH	24-4	95307-06600	26-13	97702-50012	17-4
90215-10284	2-25	90445-13806	30-27	91312-06020	33-6	93306-252YH	26-3	95602-08200	26-21	97702-50012	17-8
90240-06804	30-10	90445-14808	21-18	91312-06025	6-2	93306-253Y6	2-23	95602-10200	30-5	97702-50012	17-13
90249-12008	30-13	90450-43805	6-9	91312-06030	32-3	93306-272X1	12-18	95607-12200	18-6	97702-50012	21-26
90252-55800	24-10	90450-48805	6-10	91317-06030	31-14	93306-272X4	12-18	95612-08635	1-4	97702-50012	22-17
90252-55800	26-36	90464-14803	35-8	91401-20012	14-11	93306-305YC	2-6	95612-12100	18-27	97702-50012	22-23
90269-06814	17-14	90464-16006	21-24	91401-20012	26-28	93310-325X3	10-6	95702-05500	40-19	97702-50012	31-23
90269-06814	17-17	90464-16006	21-40	91401-20012	30-8	93310-628X0	2-3	95702-08500	7-12	97702-50014	35-4
90269-06814	31-25	90464-16061	39-14	91401-25015	29-5	93315-112Y9	11-26	95707-06300	38-7	97702-50016	36-11
90269-06814	31-30	90464-50800	39-15	91401-25015	29-17	93317-318Y5	18-3	95707-12500	32-5	97702-50016	36-14
90280-03017	2-7	90464-80802	21-5	91401-25015	30-24	93410-22039	12-9	95802-06010	8-5	97702-50016	37-7
90282-05031	2-24	90467-09006	21-41	91701-08035	30-23	93450-16812	2-10	95802-06010	29-22	97702-50025	35-3
90338-09802	38-1	90467-100A1	21-42	91701-08040	29-4	93501-04805	30-26	95802-06012	22-11	97707-40014	36-4
90338-30802	9-24	90467-12800	6-20	91701-08040	29-16	93505-16844	11-25	95802-06020	9-14	98502-05014	29-7
90340-12808	5-3	90467-13816	6-27	91810-14804	1-18	93605-06800	4-2	95802-06020	16-4	98502-05014	29-19
90340-14117	9-9	90467-15803	6-28	91830-21014	8-4	93608-43238	14-7	95802-06025	39-11	98502-06012	12-5
90340-32805	9-11	90467-20050	6-18	91830-21014	9-6	93822-14800	12-20	95802-08025	7-14	98502-06014	17-19
90387-06023	7-5	90480-01558	17-21	91830-21014	9-19	93900-00824	24-6	95802-08035	7-15	98507-05012	27-4
90387-06048	16-8	90480-01558	37-10	92902-06200	14-12	93900-00824	26-23	9580N-06016	40-21	99001-10600	14-6
90387-06048	16-19	90480-01559	22-4	92902-06200	30-9	94110-17818	24-5	95812-06012	19-21	99009-10400	10-4
90387-06048	21-33	90480-08801	16-3	92902-06200	30-11	94114-17801	26-22	95812-06012	31-19	99009-17400	12-25
90387-06048	22-13	90480-12812	7-4	92902-08200	23-16	94568-B5128	26-38	95812-06030	6-7	99009-20500	11-28
90387-066J9	18-9	90480-12812	9-16	92902-08200	26-31	94568-G2096	4-8	95812-08016	15-7		

*COPYRIGHT: All rights reserved. No part of this publication
may be reproduced without permission.*



INDIA YAMAHA MOTOR PVT. LIMITED

A-3, Industrial Area, Noida-Dadri Road,
Surajpur-201306, Distt: Gautam Budh Nagar (UP)

1Y11-(PC-01)-089-08-14-E
PRINTED IN INDIA