

AUTOMOTIVE AFTERMARKET MRP LIST



Effective from 1st November 2018
**This price list supercedes all earlier price lists.*

What's NSK?



motion for emotion

From the wheels of a skateboard, to cars, trains, and planes, and even in home electronics, bearings come in all shapes and sizes and help make motion smooth. Bearings also play a vital role in cutting-edge medical technology, next-generation clean energy, and even in outer space! NSK is reaching beyond the present, expanding horizons, and bringing new motion to the world. Where do you want to go tomorrow? Just imagine the possibilities. We'll move you there.

We're NSK, and We're Setting The Future In Motion

MOTION & CONTROL™
NSK

About us

Our products are setting new standards for reliability, energy efficiency and durability. We offer almost all types of bearings, including deep - groove ball bearings, spherical & cylindrical roller bearings and super - precision bearings. In addition, we also develop and produce mounted units, linear guides, ball screws, wheel bearing units and steering systems



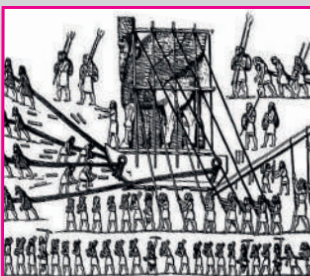
150 Overseas Business Sites

Headquarters	6
Production site	64
Sales site	120
R&D center	14
Representative office	6

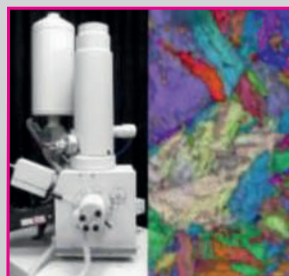
Operating bases: **210** sites in **30** countries
(As of March 31, 2016)

NSK's 4 core technologies

TRIBOLOGY



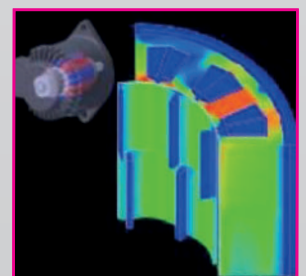
MATERIAL ENGINEERING



ANALYSIS TECHNOLOGY



MECHATRONICS





Deep Groove Ball Bearings

S.No	Part No	MRP	S.No	Part No	MRP	S.No	Part No	MRP
1	6000	105	29	6005DU	173	57	6200Z	110
2	6000Z	113	30	6005DDU	185	58	6200ZZ	112
3	6000ZZ	131	31	6006	225	59	6200DU	116
4	6000DU	127	32	6006Z	252	60	6200DDU	118
5	6000DDU	135	33	6006ZZ	274	61	6201	92
6	6001	106	34	6006DU	278	62	6201Z	97
7	6001Z	115	35	6006DDU	284	63	6201ZZ	106
8	6001ZZ	133	36	6007	227	64	6201DU	109
9	6001DU	135	37	6007Z	259	65	6201DDU	111
10	6001DDU	141	38	6007ZZ	265	66	6202	107
11	6002	107	39	6007DU	267	67	6202Z	112
12	6002Z	128	40	6007DDU	274	68	6202ZZ	118
13	6002ZZ	148	41	6008	368	69	6202DU	123
14	6002DU	155	42	6008Z	390	70	6202DDU	125
15	6002DDU	163	43	6008ZZ	407	71	6203	118
16	6003	137	44	6008DU	412	72	6203Z	122
17	6003Z	152	45	6008DDU	417	73	6203ZZ	126
18	6003ZZ	176	46	6009	414	74	6203DU	133
19	6003DU	149	47	6009Z	425	75	6203DDU	136
20	6003DDU	186	48	6009ZZ	434	76	6204	163
21	6004	142	49	6009DU	435	77	6204Z	165
22	6004Z	152	50	6009DDU	441	78	6204ZZ	168
23	6004ZZ	156	51	6010	553	79	6204DU	168
24	6004DU	161	52	6010Z	591	80	6204DDU	173
25	6004DDU	169	53	6010ZZ	592	81	6205	204
26	6005	146	54	6010DU	592	82	6205Z	211
27	6005Z	156	55	6010DDU	605	83	6205ZZ	224
28	6005ZZ	168	56	6200	105	84	6205DU	226

CM/C3 : Without Seal (Plain bearing)
Z : One Side Metal Shield
ZZ : Double Side Metal Shield
DU : Single Side Rubber Seal
DDU : Double Side Rubber Seal

S.No	Part No	MRP	S.No	Part No	MRP	S.No	Part No	MRP
85	6205DDU	230	113	6211DDU	872	141	6302ZZ	192
86	6206	311	114	6212	984	142	6302DU	198
87	6206Z	319	115	6212ZZ	1036	143	6302DDU	202
88	6206ZZ	324	116	6212DDU	1139	144	6303	206
89	6206DU	324	117	6213	1120	145	6303Z	218
90	6206DDU	326	118	6213ZZ	1180	146	6303ZZ	227
91	6207	395	119	6213DDU	1269	147	6303DU	216
92	6207Z	411	120	6214	1323	148	6303DDU	234
93	6207ZZ	418	121	6214ZZ	1375	149	6304	169
94	6207DU	428	122	6214DDU	1497	150	6304Z	189
95	6207DDU	448	123	6215	1483	151	6304ZZ	203
96	6208	498	124	6215ZZ	1526	152	6304DU	191
97	6208Z	527	125	6215DDU	1683	153	6304DDU	212
98	6208ZZ	532	126	6216	2403	154	6305	256
99	6208DU	530	127	6216ZZ	2566	155	6305Z	302
100	6208DDU	551	128	6216DDU	2670	156	6305ZZ	318
101	6209	591	129	6300	158	157	6305DU	352
102	6209Z	612	130	6300Z	163	158	6305DDU	359
103	6209ZZ	614	131	6300ZZ	167	159	6306	415
104	6209DU	637	132	6300DU	173	160	6306Z	413
105	6209DDU	639	133	6300DDU	183	161	6306ZZ	423
106	6210	630	134	6301	113	162	6306DU	420
107	6210Z	662	135	6301Z	118	163	6306DDU	436
108	6210ZZ	673	136	6301ZZ	120	164	6307	581
109	6210DU	693	137	6301DU	124	165	6307Z	585
110	6210DDU	745	138	6301DDU	132	166	6307ZZ	590
111	6211	794	139	6302	179	167	6307DU	613
112	6211ZZ	827	140	6302Z	184	168	6307DDU	632

S.No	Part No	MRP	S.No	Part No	MRP	S.No	Part No	MRP
169	6308	788	200	6316ZZ	4076	231	6901	138
170	6308Z	794	201	6316DDU	4408	232	6901ZZ	140
171	6308ZZ	808	202	6800	165	233	6902	147
172	6308DU	1011	203	6800ZZ	172	234	6902ZZ	151
173	6308DDU	1018	204	6801ZZ	237	235	6903	167
174	6309	1191	205	6801DDU	240	236	6903ZZ	182
175	6309Z	1196	206	6802	194	237	6903DDU	202
176	6309ZZ	1204	207	6802ZZ	201	238	6904	177
177	6309DU	1190	208	6802DDU	205	239	6904ZZ	192
178	6309DDU	1214	209	6803	206	240	6904DDU	194
179	6310	1212	210	6803ZZ	209	241	6905	188
180	6310Z	1216	211	6804	169	242	6905ZZ	202
181	6310ZZ	1226	212	6804ZZ	177	243	6905DDU	207
182	6310DU	1226	213	6804DDU	180	244	6906	200
183	6310DDU	1248	214	6805	180	245	6906ZZ	216
184	6311	1587	215	6805ZZ	189	246	6906DDU	222
185	6311ZZ	1623	216	6805DDU	193	247	6907	207
186	6311DDU	1643	217	6806	196	248	6907ZZ	251
187	6312	2132	218	6806ZZ	230	249	6907DDU	255
188	6312ZZ	2213	219	6806DDU	235	250	6908	266
189	6312DDU	2315	220	6807	248	251	6908ZZ	293
190	6313	2456	221	6807ZZ	253	252	6908DDU	304
191	6313ZZ	2525	222	6807DDU	260	253	6909	416
192	6313DDU	2638	223	6808	310	254	6909ZZ	445
193	6314	2802	224	6808ZZ	336	255	6909DDU	481
194	6314ZZ	2976	225	6808DDU	390	256	6910	435
195	6314DDU	3056	226	6809	362	257	6910ZZ	447
196	6315	3357	227	6809ZZ	395	258	6910DDU	465
197	6315ZZ	3441	228	6810	486	259	607	60
198	6315DDU	3650	229	6810ZZ	520	260	607ZZ	64
199	6316	4082	230	6810DDU	549	261	607DDU	70

S.No	Part No	MRP	S.No	Part No	MRP	S.No	Part No	MRP
262	608	67	275	627DDU	106	288	63/28	410
263	608ZZ	70	276	628ZZ	133	289	6304NR*C3	200
264	608DDU	74	277	629	104	290	6308NR*C3	770
265	609	72	278	629ZZ	106	291	6310NR*C3	1190
266	609ZZ	76	279	629DDU	111	292	6311NR*C3	1499
267	609DDU	82	280	695ZZ	107	293	62/28DDUC3**	380
268	625	83	281	695DDU	110	294	63/22DDU	390
269	625ZZ	87	282	696	112	295	62/22DDU	580
270	625DDU	93	283	696ZZ	109	296	60/22DDU	298
271	626ZZ	85	284	696DDU	111	297	63/32DDUNR*	630
272	626DDU	91	285	698ZZ	112	298	6902DD	169
273	627	99	286	698DDU	115	299	6808DD	355
274	627ZZ	102	287	62/28	238			



Tapered Roller Bearings

S.No	Part No	Application	MRP (INR)
1	HR30202		325
2	HR30203	Fuel Pump Mico	302
3	HR30204	FI Pump , RW Spark , Indica	285
4	HR30205	FI Pump , FW Spark , Indica	342
5	HR30206	FW Bajaj Minidor	441
6	HR30207	Swaraj Mazda Counter Shaft	476
7	HR30208	RW GM Tavera , Escorts 340/355	709
8	HR30209	Input Shaft Tata 1312,1612	700
9	HR30210	FW Escorts Tractor , Counter Shaft Tata 608	822
10	HR30211	Eicher RW Outer	1061
11	HR30212	Eicher RW Inner	1214
12	HR30213	Swaraj Mazda RW Inner	1719
13	HR30214	Eicher RW Inner	3069
14	HR30215	Escorts Tractors	3253
15	HR30302	Escorts Tractors	345
16	HR30303		402

S.No	Part No	Application	MRP
17	HR30304		422
18	HR30305	Alto , Gypsy - Bevel Pinion	474
19	HR30306	Alto , Gypsy - Bevel Pinion Rear	556
20	HR30307	Tempo Bevel Pinion	683
21	HR30308	Mazda , Eicher Crown Pinion	917
22	HR30309	Mazda , Eicher Crown Pinion	1349
23	HR30310		1360
24	HR32004		396
25	HR32005		406
26	HR32006		410
27	HR32009		631
28	HR32010		731
29	HR32013		991
30	HR32204		496
31	HR32205		500
32	HR32206		546
33	HR32207	Mazda pinion , Eicher FW	627
34	HR32208	Mazda FW , Mahindra Pick up RW	702
35	HR32209		765
36	HR32210	RW Tata 407	859
37	HR32211		1316
38	HR32212	RW Tata 609, 709	1423
39	HR32213	Truck Axle	1852
40	HR32307	Tata Trucks	979
41	HR32308		1127
42	HR32309		1591
43	320/32XJ	Tata Ace Fw Inner	440
44	HR320/22XJ		428
45	HR33005J	Maruti Gearbox (Zen / Esteem)	381
46	HR32004XJ	Maruti Gearbox (Zen / Esteem)	351
47	17887R/17831R		626
48	LM300849RG3/811RG	Gypsy FW	560



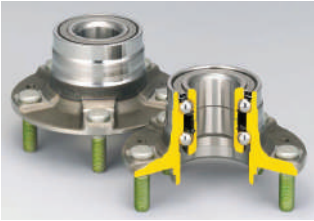
Air Conditioner Bearings

S.No	Part No	Dimension (mm)	Application	MRP (INR)
1	30BD4718T12DDUM1-G01 MA6L5	30*47*18	Nissan Micra	495
2	30BD5222T1XDDUM6CG01 MA6L5	30*52*22	Tata Safari, Toyota Qualis	513
3	30BD5220T1XLDDU-01LF HA2LQ	30*52*20	Maruti Alto, Wgaon R	536
4	30BD40T12DDUCG50 ENSL1	30*55*23	Mahindra Scorpio, Tata Indica, Hyundai accent	428
5	ZA-32BD4718T1XDDUM02 ENSL5	32*47*18	Swift Petrol	447
6	EP35BD4820T1XDDUM-01	35*48*20	Honda Civic	426
7	35BD5020A1DDUKX26*04 6	35*50*20	Tata Sumo, Honda City, Mitsubishi Lancer , Santro	448
8	35BD5220-A-T1XDDUM01 MA8L5	35*52*20	Zen Delphi, Fiat siena, Hyundai Santro Xing	462
9	35BD5222T1XDDUM2CG01 ENSL5	35*52*22	I20	502
10	ZA-35BD219T1XDDUK-01 ENSL5	35*55*20	Mahindra Bolero, Maruti 800, Ford Fiesta	452
11	38BD5417T12DDUK6-B01 ENSL1	38*54*17	Maruti Zen, Esteem	479
12	40BD219T12DDUCG27 ENSL5	40*62*24	508 Compressor	478



Tensioner Idler Pulley

S.No	Part No	Application	Position	MRP (INR)
1	ZA-62TB0629B25 EA7L5	Toyota Innova	Engine	1690
2	ZA-62TB0813B01B EA7L5	Toyota Qualis	Engine	1576



Wheel Bearings

S.No	Part No	Application	Position	Box Qty	MRP
1	ZA-43KWD07AU42C	Toyota Innova	FW - N-ABS	15	1936
2	HTF35BW10E-G-3CG3-01	Toyota Innova / Qualis	RW		792
3	ZA-54KWH01R-Y-2CA	Toyota Fortuner	H3 - FW - ABS	6	4586
4	ZA-42KWD10U42CA	Toyota Fortuner	RW - N-ABS	15	3509
5	ZA-40BWD12JCA88	Toyota Corolla	FW - N-ABS	12	1887
6	ZA-49BWKH47V-Y-5CP	Toyota Corolla	H3 - RW - N-ABS	4	6279
7	ZA-45BWD10ACA86	Toyota Camry	FW - N-ABS	20	3040
8	ZA-38BWD24CA78	Toyota Camry	RW - N-ABS	24	2703
9	ZA-56BWKH15D-Y-5CP21*LF RA1S1	Toyota Etios	FW - N-ABS		2980
10	ZA-44BWKH39A-Y-5CP-01LF RA1S1	Toyota Etios	RW - N-ABS		3050
11	LM11949R/LM11910R	5	QualisFW (Outer)	FW	383
12	LM67048R/LM67010R	5	QualisFW (Inner)	FW	388
13	ZA-38BWD27ACA75	Honda City (Type 5,6,&7) Jazz Mobilio Amaze Brio	FW - ABS	24	1795
14	ZA-38BWD26E1CA61	Honda City (Type 3&4)	FW - ABS	24	1560
15	ZA-38BWD27LCA75	Honda City (Type 5,6,&7) Jazz Mobilio Amaze Brio	FW - N-ABS	24	1616
16	ZA-28BWK19B-Y-2CP-01	Honda City Jazz Mobilio Amaze Brio	H2 - RW - ABS	4	3244
17	ZA-48BWD02A2CA97	Honda Civic/ Accord Type II	FW - ABS	15	2669
18	ZA-57BWKH02E-Y-5CP01 N6CS5	Honda CRV	H3 - RW		9843
19	ZA-47BWKH02L-Y-5	Honda Civic	H3 - RW - ABS	4	7895
20	ZA-48BWD02A2CA97	Honda Civic	FW - ABS	24	2669
21	ZA-51BWD01B1CA9-01	Honda CRV Type 3	W- TW - ABS	24	3254
22	43BWD15BCA82**SA**	Honda Accord			1595
23	ZA-48BWD02A2CA97**	Honda Accord type 2			1956
24	ZA-38BWD26E1CA61** N6CS5	Honda Fit / CR-V / City	FW		1560
25	ZA-25BWD03DCA42	Suzuki Alto/ Wagon R/Celerio/Estilo/ A-Star (New Model)	RW - N-ABS	12	757
26	ZA-40BWD21DCA116	Suzuki Swift Dzire	FW - N-ABS	12	943
27	ZA-40BWD21ECA116	Suzuki Swift Dzire / Ciaz /Tata Zest/ Bolt / Nexon	FW - ABS	12	1041

S.No	Part No	Application	Position	Box Qty	MRP
28	ZA-28BWD05BCA30	Suzuki Swift / Manza / Bolt / Nexon / Zest	RW - N-ABS	36	1025
29	ZA-44BWKH38L	Suzuki (2010- 2017) Swift /(2010 - 2017) Dzire / Ciaz	H3 - RW - ABS	12	3300
30	ZA-44BWKH38M	Suzuki (2010- 2017) Swift /(2010 - 2017) Dzire	H3 - RW - N-ABS	12	2480
31	ZA-45BWD16CA103	Suzuki Ertiga SX4/ Vitara Brezza / Tata Winger /S-Cross/ Ciaz	FW - ABS	20	1467
32	ZA-55BWKH32B-Y-5CP	Suzuki Baleno / Ignis /2018 Swift / 2018 Dzire	ABS	12	3500
33	LM300849RG3/811RG	Suzuki Gypsy	FW		580
34	ZA-39BWD09BCA119	VW Polo / Vento/ Skoda Rapid / Eco Sport / Figo / Aspire	FW - ABS	12	1479
35	40BWD06D-JB-5CA10-01	Skoda Octavia			1380
36	ZA-77BWKH13A-Y-5CP-01LF RW1S1	XUV 500	FW		6300
37	ZA-77BWKH15A-Y-5CP-01LF1 RW1S1	XUV 500	RW		5800
38	25590R/25520R 5	Scorpio / Mahindra 540 , 550 (Inner)	FW		796
39	LM501349R/310R 5	Mahindra Jeep / Sumo / Safari /Spacio (Outer)	FW		541
40	11590R/11520R *5	Thar / Bolero / Pick up / Scorpio King-pin			418
41	25877R/25821R 5	Mahindra Jeep / Pickup	RW		1018
42	25590R/25523R 5	Mahindra Jeep / PickupGear Box	RW		998
43	ZA-/HO/35BWD16-JB-01 S6NS5	Nissan Micra			1306
44	ZA-/HO/40BWD15A-JB01 RAFS5	Nissan Sunny	FW		1408
45	45KWD05AU42SA**	Aria/Hexa/Strome	FW		3180
46	ZA-34BWD11CA57** S6NS5	Chevrolet Beat / Aveo	FW		1714
47	ZA-39BWD05CA58** S6NS5	Chevrolet Optra	FW		1650
48	L68149RGB3/110RGB 5	Chevrolet Spark /	FW		500
49	M12649R/610RPN4C 5	Tavera/ Traveller (Inner & outer)	FW		449
50	LM48548R/LM48510R 5	Tavera / Traveller / Sumo (Inner & outer)	FW		398
51	LM11749RGB3/710RGB 5	Hyundai Santro	RW		341
52	L44649R/L44610R 5	Hyundai Santro	RW		363
53	LM603049R/011R 5	Trax	FW		632



Clutch Release Bearings

S.No	Part No	Application	Petrol/Diesel	MRP (INR)
1	ZA-58TKZ3504A3RA ENCS5	Fortuner	Diesel	1,592
2	ZA-50TKZ3503RA ENCS5	Innova	Diesel	1,398
3	ZA-50TKB3505B1R ENSS5	Qualis	Petrol	1,055
4	ZA-47TKB3101A ENCS5	City Type 1 & II	Petrol	1,275
5	ZA-47TKB3102A ENCS5	City Type 3,4,5, Jazz, Mobilio, Civic	Petrol	1,250
6	ZA-48TKB3204R ENSS5	Tavera	Diesel	1,372
7	ZA-60TKZ3202AR1	Isuzu Clutch	Diesel	1580
8	ZA-48TKZ3201A ENSS5	Accent/ Verna	Petrol	1,148
9	ZA-47TKB3001A ENSS5	800	Petrol	830
10	ZA-35TMK29C1 ENCS5	Omni	Petrol	575
11	ZA-60TKZ3502AR ENCSS	Camry	Petrol	1,538
12	ZA-50TKZ3302CR ENCS5	Corolla / Corolla Altis	Petrol	1,314
13	ZA-38TKA2801A ENCS5	Micra	Petrol	1,322
14	ZA-48TKB3302D ENCL5	Sunny	Petrol	1,336
15	ZA-58TKA3703B ENSS5	Pajero / Montero / Canter (LCV)	Diesel	1,311
16	ZA-50TKA3805D ENSS5	Aveo	Petrol	1,349
17	ZA-68TKB3506A2R ENSS5	Dyna Truck / Mahindra Loadking	Diesel	1,647
18	ZA-TK40-4A ENCS5	Nissan Alwyn (Cabstar)	Diesel	969



Alternator Bearings

S.No	Part No.	Dimensions	MARKET PART NUM- BER	LTVS part	APPLICATION	Alternator Model	MRP
1	B8-85T12DDNCXMC3E	NS7S5	8*23*14				301
2	B10-50T12DDNCXCG1-01	ENSS5	10*27*11	B10			250
3	6201T1XLDGCG3E*-01	J HABSQ	12*32*10	6201	26211364	Tata - Ace SAS23, SA28, 3SA28,- 3S1A130 & SA45	158
4	6002DDUC3E**U466	J SENRSQ	15*32*11	6002			143
5	NC6202T1XVVCE	NS7S5	15*35*11	6202 with double cut raceway		GM- Spark & Beat ; Tata Indigo	239
6	6202JVVCXCE	NS7S5	15*35*11	6202 CUT	26211664	M&M- Bolero, Scorpio ; Tata - Safari, Indigo	191
7	B15-69BT1XGRDDG6CG01		15*35*13				189
8	ZV-B15-89-A-T1XGDD01	HAIY5	15*46*14	B15-89			270
9	B15-86AT1XDDG3*W-G01		15*47*14				250
10	6203T1XLDGCG14-01	J HABS8	17*40*12	6203	26211055	SA15/A115	199
11	ZV-B17-102AT1XGDDG01	HAIY5	17*47*14	6303	26216266	Tata - Safari, Dicor2.2 & com- mercial vehicles	281
12	B17-99T1XDDW8CG16E	MA7H5	17*52*17	B17-99 with plastic cage	26222637	Bosch- Leyland & Volvo ,Swift , Ertiga	398
13	B17-99DDW8CG16E	EA2H5	17*52*17	B17-99 with normal cage		Bosch- Leyland	405
14	B17-116T1XDDG-GCMR	MA7H5	17*52*18	B17-116			468
15	ZV-6202A1-A-33T85G01		15*35*11	6202		Ford	362

How to identify genuine NSK bearing products



1. Always buy from authorised Distributor
2. Identify colour of the box
3. Check for MRP Label
4. Check NSK logo pattern in box design
5. Look for NSK hologram on the box

If bearing has no MRP label or not procured from authorised source, NSK cannot guarantee product genuineness.



NSK

Prices are subjected to change without prior notice.

The contents of this publication are the copyright of the publisher and must not be reproduced unless permission is granted. Every care has been taken to ensure the accuracy of the information contained in this publication but no liability for any loss or damage whether direct, indirect or consequential arising out of the use of the information contained herein.

NSK BEARINGS INDIA PRIVATE LIMITED
(Formerly Known as NSK India Sales Company Private Limited)
TVH Beliciaa Towers, 2nd Floor, Block-1
#71/1, MRC Nagar Main Road,
MRC Nagar, Chennai-600028
DID: +91-44-28479600
URL: www.nsk.com

CAT. No- NSKI1712-C-001

